

Data Path : Z:\pestpcbsrv\HPCHEM1\FID_D\Data\FD011019AL\
 Data File : FD027173.D
 Signal(s) : FID2B.CH
 Acq On : 10 Jan 2019 11:21
 Operator : AJ\SJ
 Sample : K1006-03DL 5X
 Misc :
 ALS Vial : 54 Sample Multiplier: 1

Integration File: autoint1.e
 Quant Time: Jan 10 15:48:05 2019
 Quant Method : Z:\pestpcbsrv\HPCHEM1\FID_D\methods\Alaphatic EPH 010719.M
 Quant Title : GC Extractables
 QLast Update : Tue Jan 08 08:17:25 2019
 Response via : Initial Calibration
 Integrator: ChemStation 6890 Scale Mode: Large solvent peaks clipped

Volume Inj. : 1 ul
 Signal Phase : Rxi-1ms
 Signal Info : 20M x 0.18mm x 0.18um

Compound	R.T.	Response	Conc Units
System Monitoring Compounds			
9) S ortho-Terphenyl (SURR)	11.258	379784	3.416 ug/ml
Spiked Amount	50.000	Recovery =	6.83%
12) S 1-chlorooctadecane (S...	12.696	7637746	89.250 ug/ml
Spiked Amount	50.000	Recovery =	178.50%

Target Compounds

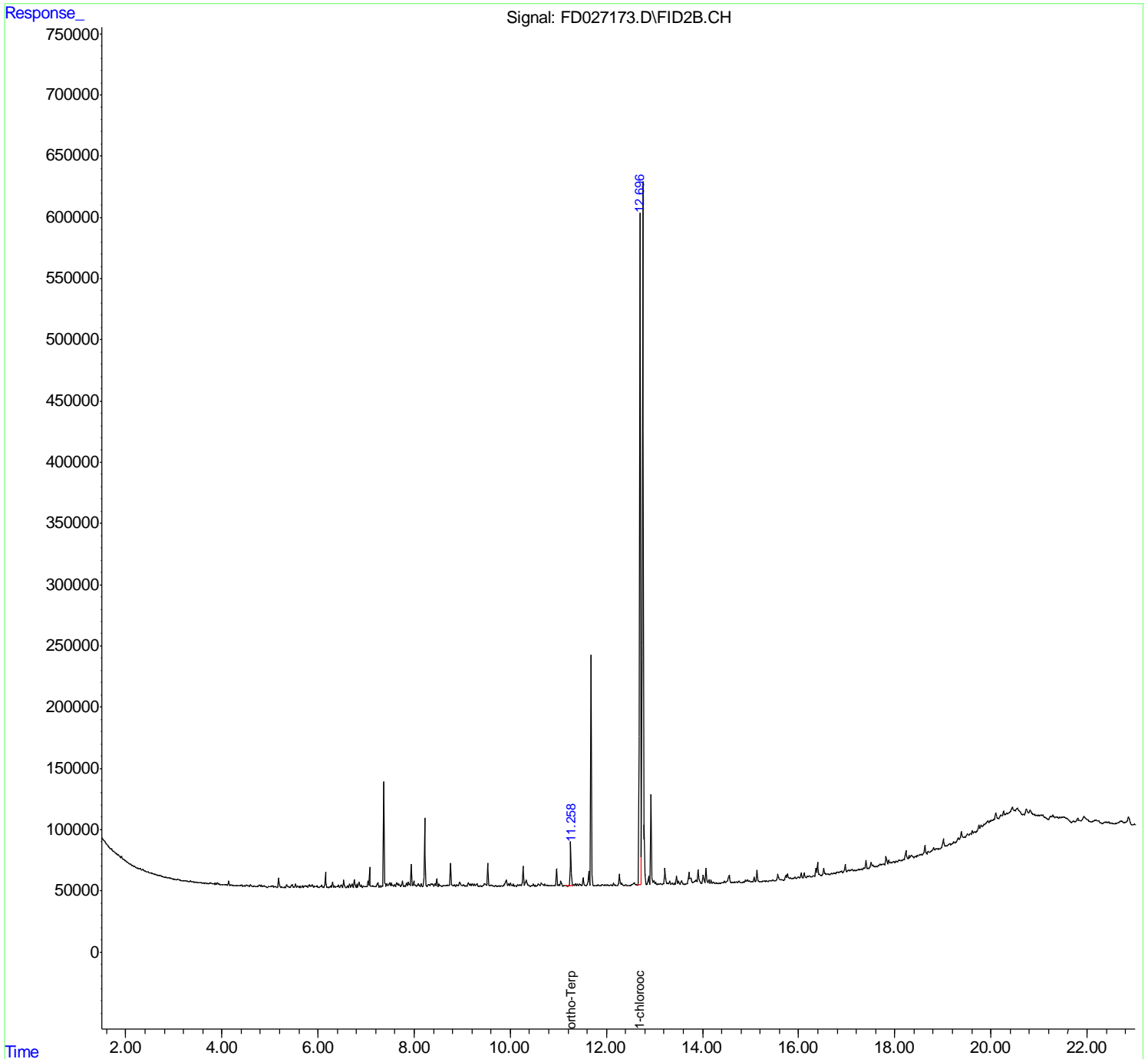
(f)=RT Delta > 1/2 Window

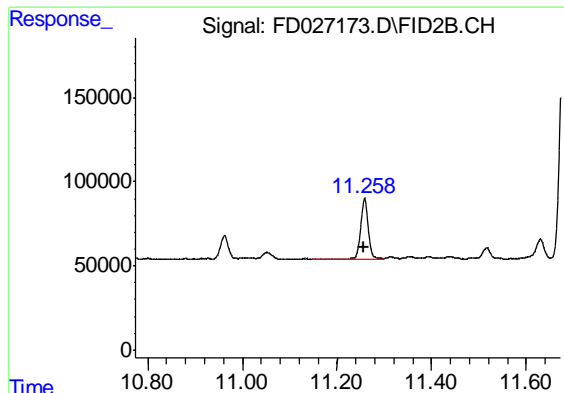
(m)=manual int.

Data Path : Z:\pestpcbsrv\HPCHEM1\FID_D\Data\FD011019AL\
 Data File : FD027173.D
 Signal(s) : FID2B.CH
 Acq On : 10 Jan 2019 11:21
 Operator : AJ\SJ
 Sample : K1006-03DL 5X
 Misc :
 ALS Vial : 54 Sample Multiplier: 1

Integration File: autoint1.e
 Quant Time: Jan 10 15:48:05 2019
 Quant Method : Z:\pestpcbsrv\HPCHEM1\FID_D\methods\Alaphatic EPH 010719.M
 Quant Title : GC Extractables
 QLast Update : Tue Jan 08 08:17:25 2019
 Response via : Initial Calibration
 Integrator: ChemStation 6890 Scale Mode: Large solvent peaks clipped

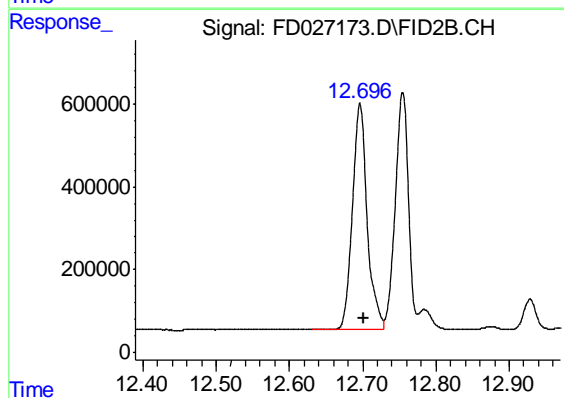
Volume Inj. : 1 ul
 Signal Phase : Rxi-1ms
 Signal Info : 20M x 0.18mm x 0.18um





#9 ortho-Terphenyl (SURR)

R.T.: 11.258 min
Delta R.T.: 0.002 min
Response: 379784
Conc: 3.42 ug/ml



#12 1-chlorooctadecane (SURR)

R.T.: 12.696 min
Delta R.T.: -0.005 min
Response: 7637746
Conc: 89.25 ug/ml