

Data Path : Z:\pestpcbsrv\HPCHEM1\FID_D\Data\FD011020AR\
 Data File : FD031981.D
 Signal(s) : FID2B.CH
 Acq On : 10 Jan 2020 8:32
 Operator : DD\AJ
 Sample : MECL2
 Misc :
 ALS Vial : 51 Sample Multiplier: 1

Integration File: autoint1.e
 Quant Time: Jan 11 01:07:21 2020
 Quant Method : Z:\pestpcbsrv\HPCHEM1\FID_D\methods\Aromatic EPH 010620.M
 Quant Title : GC Extractables
 QLast Update : Tue Jan 07 04:07:34 2020
 Response via : Initial Calibration
 Integrator: ChemStation 6890 Scale Mode: Large solvent peaks clipped

Volume Inj. : 1 µl
 Signal Phase : Rxi-1ms
 Signal Info : 20M x 0.18mm x 0.18µm

Compound	R.T.	Response	Conc Units

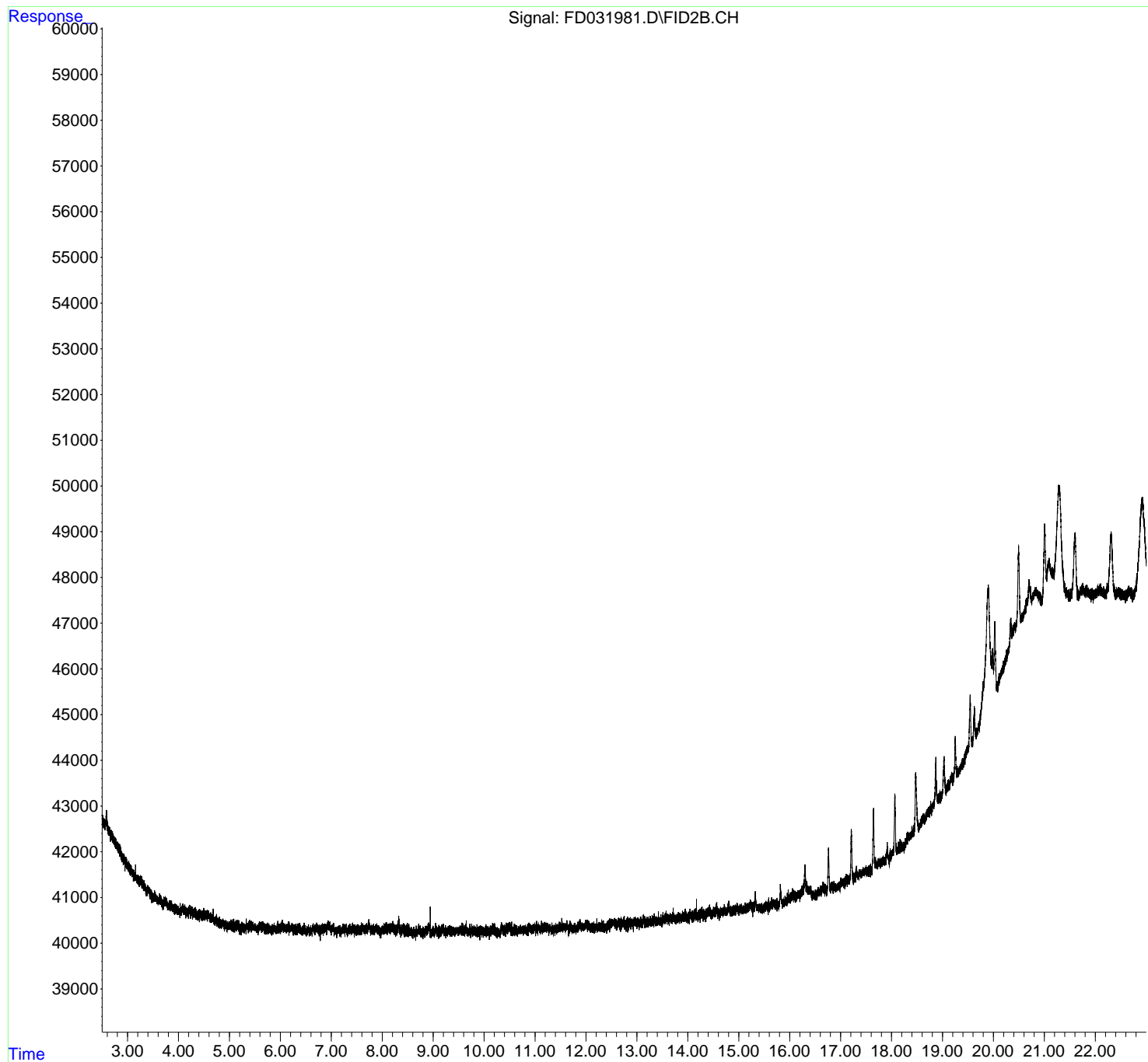
System Monitoring Compounds			
Target Compounds			

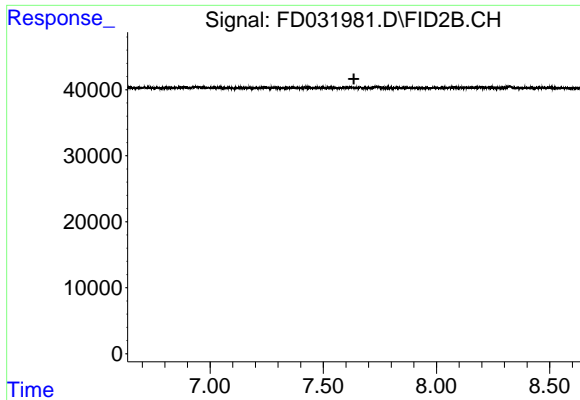
(f)=RT Delta > 1/2 Window (m)=manual int.

Data Path : Z:\pestpcbsrv\HPCHEM1\FID_D\Data\FD011020AR\
Data File : FD031981.D
Signal(s) : FID2B.CH
Acq On : 10 Jan 2020 8:32
Operator : DD\AJ
Sample : MECL2
Misc :
ALS Vial : 51 Sample Multiplier: 1

Integration File: autoint1.e
Quant Time: Jan 11 01:07:21 2020
Quant Method : Z:\pestpcbsrv\HPCHEM1\FID_D\methods\Aromatic EPH 010620.M
Quant Title : GC Extractables
QLast Update : Tue Jan 07 04:07:34 2020
Response via : Initial Calibration
Integrator: ChemStation 6890 Scale Mode: Large solvent peaks clipped

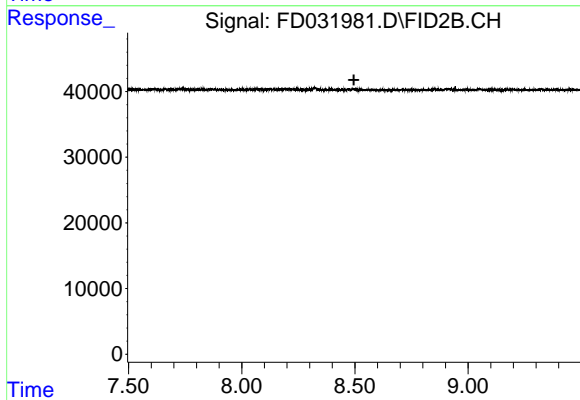
Volume Inj. : 1 μ l
Signal Phase : Rxi-1ms
Signal Info : 20M x 0.18mm x 0.18 μ m





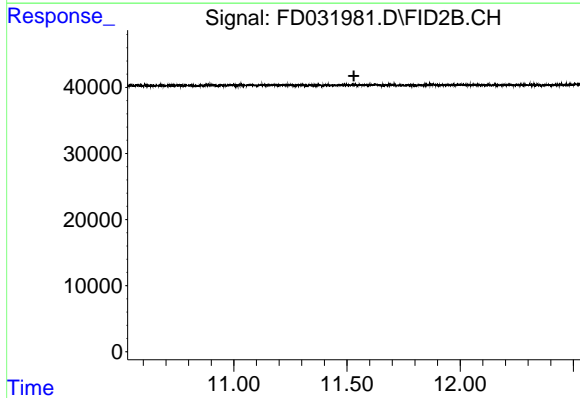
#4 2-Bromonaphthalene (SURR)

R.T.: 0.000 min
Exp R.T. : 7.635 min
Response: 0
Conc: N.D.



#6 2-Fluorobiphenyl (SURR)

R.T.: 0.000 min
Exp R.T. : 8.496 min
Response: 0
Conc: N.D.



#11 ortho-Terphenyl (SURR)

R.T.: 0.000 min
Exp R.T. : 11.531 min
Response: 0
Conc: N.D.