

Data Path : Z:\pestpcbsrv\HPCHEM1\FID\_D\Data\FD011519AR\  
 Data File : FD027288.D  
 Signal(s) : FID2B.CH  
 Acq On : 15 Jan 2019 19:44  
 Operator : AJ\SJ  
 Sample : PB116383BL  
 Misc :  
 ALS Vial : 59 Sample Multiplier: 1

Integration File: autoint1.e  
 Quant Time: Jan 16 06:34:29 2019  
 Quant Method : Z:\pestpcbsrv\HPCHEM1\FID\_D\methods\Aromatic EPH 010719.M  
 Quant Title : GC Extractables  
 QLast Update : Tue Jan 08 07:22:50 2019  
 Response via : Initial Calibration  
 Integrator: ChemStation 6890 Scale Mode: Large solvent peaks clipped

Volume Inj. : 1 µl  
 Signal Phase : Rxi-1ms  
 Signal Info : 20M x 0.18mm x 0.18µm

Compound	R.T.	Response	Conc Units
-----			
System Monitoring Compounds			
4) S 2-Bromonaphthalene (S...	7.359	3738683	39.577 ug/ml
Spiked Amount 50.000		Recovery =	79.15%
6) S 2-Fluorobiphenyl (SURR)	8.209	2566186	40.240 ug/ml
Spiked Amount 50.000 Range 0 - 131		Recovery =	80.48%
11) S ortho-Terphenyl (SURR)	11.250	3808248	35.727 ug/ml
Spiked Amount 50.000		Recovery =	71.45%

Target Compounds

-----

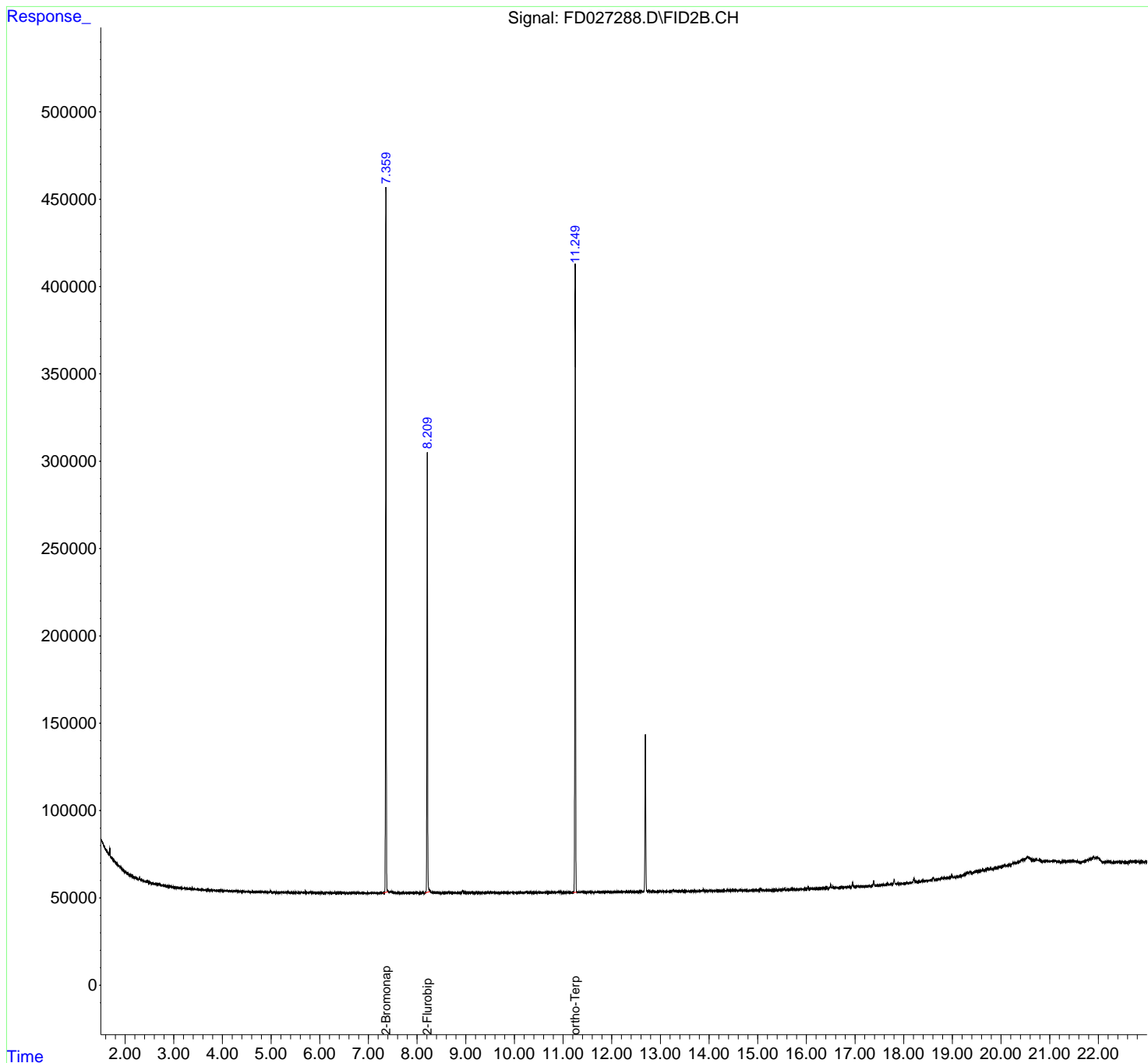
(f)=RT Delta > 1/2 Window

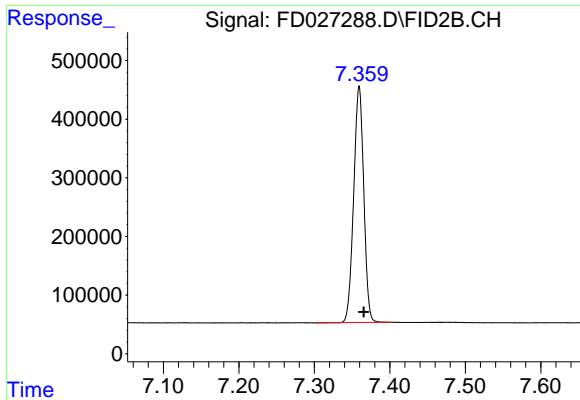
(m)=manual int.

Data Path : Z:\pestpcbsrv\HPCHEM1\FID\_D\Data\FD011519AR\  
Data File : FD027288.D  
Signal(s) : FID2B.CH  
Acq On : 15 Jan 2019 19:44  
Operator : AJ\SJ  
Sample : PB116383BL  
Misc :  
ALS Vial : 59 Sample Multiplier: 1

Integration File: autoint1.e  
Quant Time: Jan 16 06:34:29 2019  
Quant Method : Z:\pestpcbsrv\HPCHEM1\FID\_D\methods\Aromatic EPH 010719.M  
Quant Title : GC Extractables  
QLast Update : Tue Jan 08 07:22:50 2019  
Response via : Initial Calibration  
Integrator: ChemStation 6890 Scale Mode: Large solvent peaks clipped

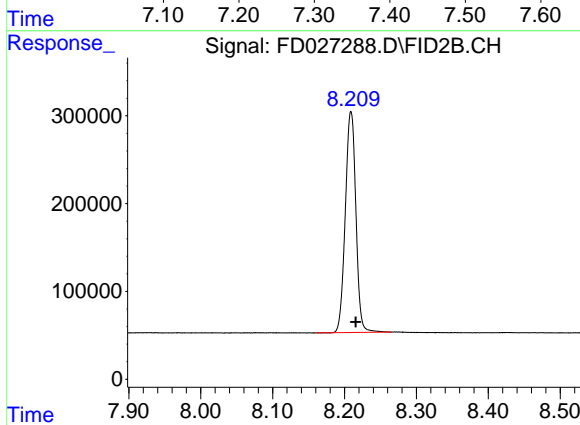
Volume Inj. : 1 µl  
Signal Phase : Rxi-1ms  
Signal Info : 20M x 0.18mm x 0.18µm





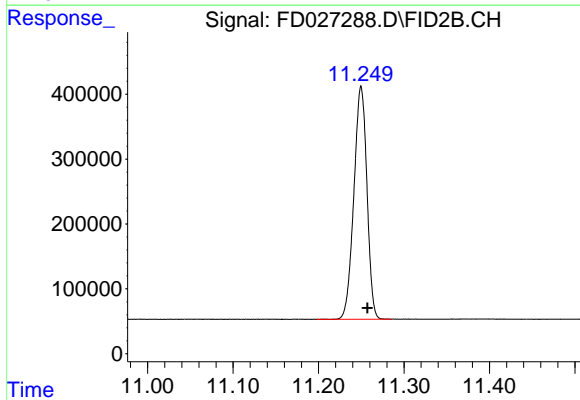
#4 2-Bromonaphthalene (SURR)

R.T.: 7.359 min  
Delta R.T.: -0.006 min  
Response: 3738683  
Conc: 39.58 ug/ml



#6 2-Fluorobiphenyl (SURR)

R.T.: 8.209 min  
Delta R.T.: -0.006 min  
Response: 2566186  
Conc: 40.24 ug/ml



#11 ortho-Terphenyl (SURR)

R.T.: 11.250 min  
Delta R.T.: -0.007 min  
Response: 3808248  
Conc: 35.73 ug/ml