

Data Path : Z:\pestpcbsrv\HPCHEM1\FID_D\Data\FD011719AL\
 Data File : FD027322.D
 Signal(s) : FID2B.CH
 Acq On : 17 Jan 2019 9:19
 Operator : AJ\SJ
 Sample : 20 PPM ALIPHATIC HC STD
 Misc :
 ALS Vial : 52 Sample Multiplier: 1

Integration File: autoint1.e
 Quant Time: Jan 17 11:31:33 2019
 Quant Method : Z:\pestpcbsrv\HPCHEM1\FID_D\methods\Alaphatic EPH 010719.M
 Quant Title : GC Extractables
 QLast Update : Tue Jan 08 08:17:25 2019
 Response via : Initial Calibration
 Integrator: ChemStation 6890 Scale Mode: Large solvent peaks clipped

Volume Inj. : 1 ul
 Signal Phase : Rxi-1ms
 Signal Info : 20M x 0.18mm x 0.18um

Compound	R.T.	Response	Conc Units

System Monitoring Compounds			
9) S ortho-Terphenyl (SURR)	11.249	2323459	20.898 ug/ml
Spiked Amount	50.000	Recovery	= 41.80%
12) S 1-chlorooctadecane (S...	12.693	1766462	20.642 ug/ml
Spiked Amount	50.000	Recovery	= 41.28%
Target Compounds			
1) T n-Nonane (C9)	3.078	1969892	20.357 ug/ml
2) T n-Decane (C10)	4.137	2015140	20.313 ug/ml
3) T A~Naphthalene (C11.7)	5.695	2348410	21.077 ug/ml
4) T n-Dodecane (C12)	6.145	2043899	20.395 ug/ml
5) T A~2-methylnaphthalene...	6.745	2369878	21.217 ug/ml
6) T n-Tetradecane (C14)	7.930	2081665	20.496 ug/ml
7) T n-Hexadecane (C16)	9.521	2066229	20.358 ug/ml
8) T n-Octadecane (C18)	10.954	2045635	20.148 ug/ml
10) T n-Eicosane (C20)	12.256	2048465	20.457 ug/ml
11) T n-Heneicosane (C21)	12.863	2024500	20.508 ug/ml
13) T n-Docosane (C22)	13.446	2052657	20.967 ug/ml
14) T n-Tetracosane (C24)	14.543	2101159	21.769 ug/ml
15) T n-Hexacosane (C26)	15.558	2172262	23.096 ug/ml
16) T n-Octacosane (C28)	16.503	2265097	24.396 ug/ml
17) T n-Tricontane (C30)	17.385	2252110	25.006 ug/ml
18) T n-Dotriacontane (C32)	18.211	2081290	24.400 ug/ml
19) T n-Tetratriacontane (C34)	18.990	1735952	23.554 ug/ml
20) T n-Hexatriacontane (C36)	19.725	1497496	22.482 ug/ml
21) T n-Octatriacontane (C38)	20.422	1422911	21.928 ug/ml
22) T n-Tetracontane (C40)	21.207	1304581	20.784 ug/ml

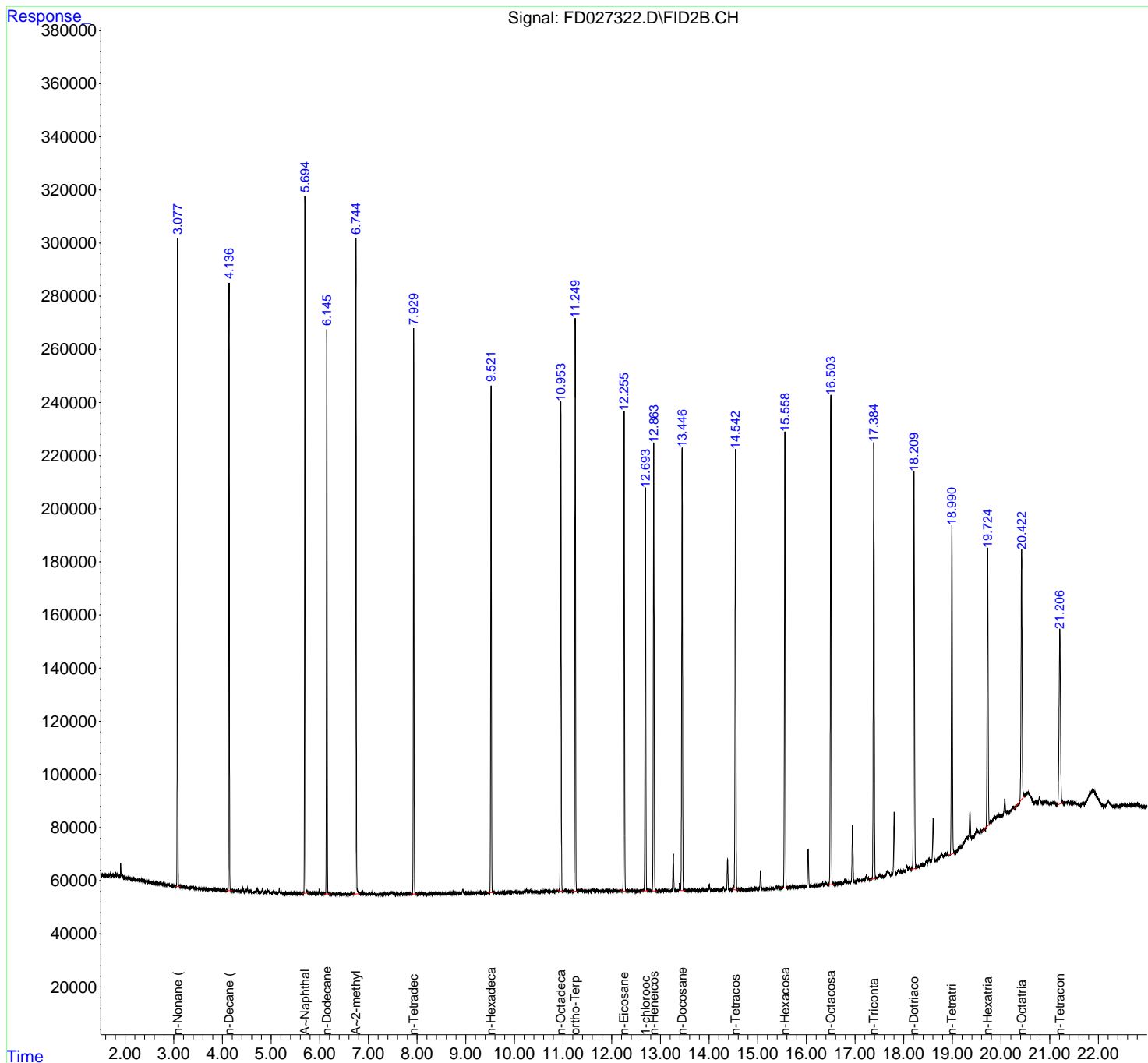
(f)=RT Delta > 1/2 Window

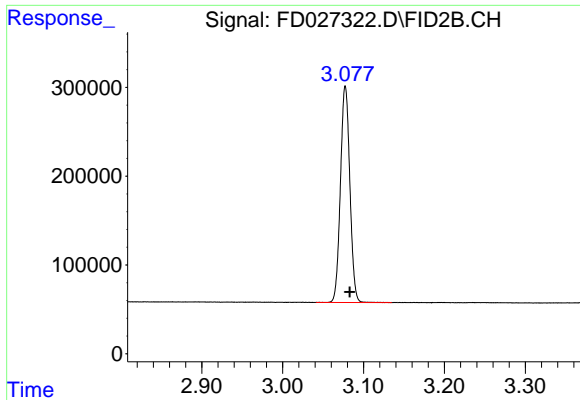
(m)=manual int.

Data Path : Z:\pestpcbsrv\HPCHEM1\FID_D\Data\FD011719AL\
 Data File : FD027322.D
 Signal(s) : FID2B.CH
 Acq On : 17 Jan 2019 9:19
 Operator : AJ\SJ
 Sample : 20 PPM ALIPHATIC HC STD
 Misc :
 ALS Vial : 52 Sample Multiplier: 1

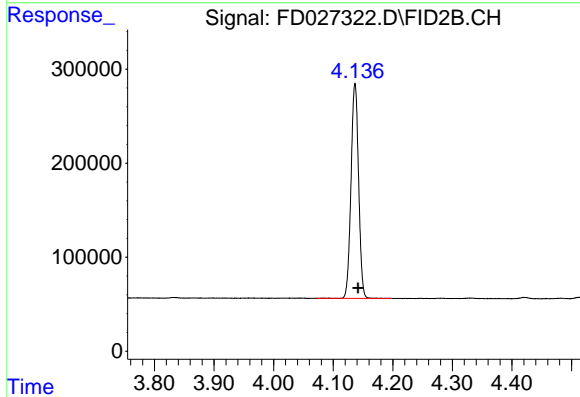
Integration File: autoint1.e
 Quant Time: Jan 17 11:31:33 2019
 Quant Method : Z:\pestpcbsrv\HPCHEM1\FID_D\methods\Aliphatic EPH 010719.M
 Quant Title : GC Extractables
 QLast Update : Tue Jan 08 08:17:25 2019
 Response via : Initial Calibration
 Integrator: ChemStation 6890 Scale Mode: Large solvent peaks clipped

Volume Inj. : 1 ul
 Signal Phase : Rxi-1ms
 Signal Info : 20M x 0.18mm x 0.18um

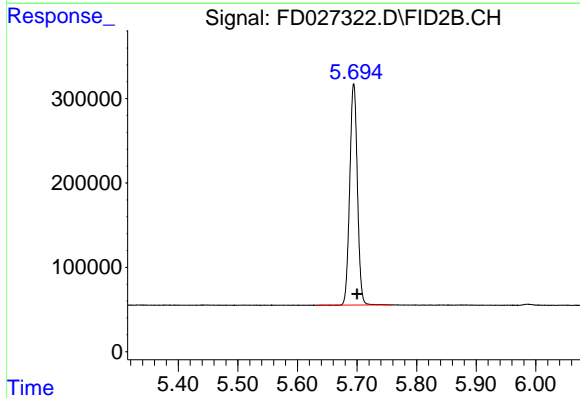




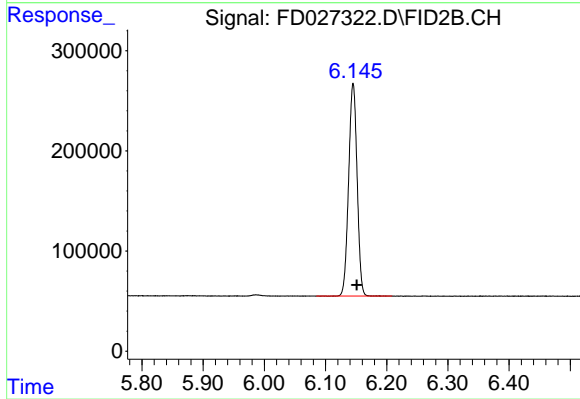
#1 n-Nonane (C9)
R.T.: 3.078 min
Delta R.T.: -0.005 min
Response: 1969892
Conc: 20.36 ug/ml



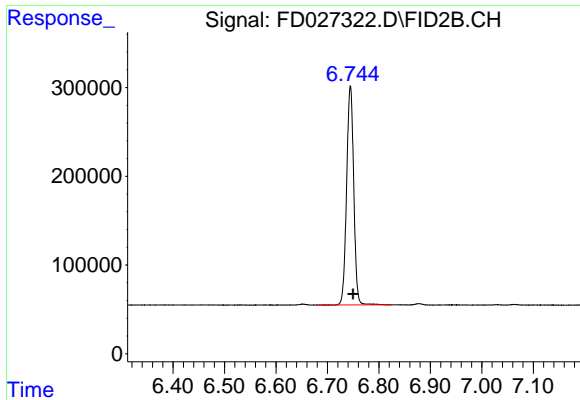
#2 n-Decane (C10)
R.T.: 4.137 min
Delta R.T.: -0.005 min
Response: 2015140
Conc: 20.31 ug/ml



#3 A~Naphthalene (C11.7)
R.T.: 5.695 min
Delta R.T.: -0.005 min
Response: 2348410
Conc: 21.08 ug/ml

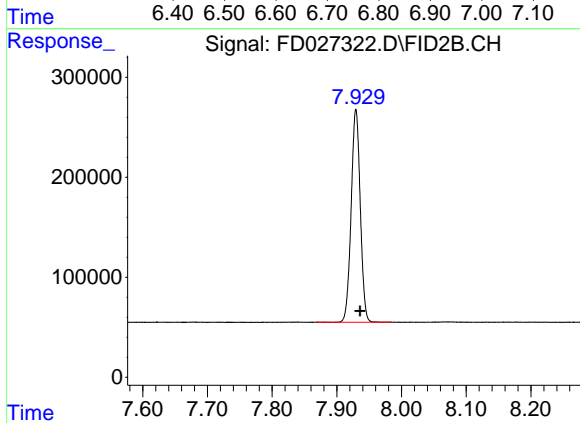


#4 n-Dodecane (C12)
R.T.: 6.145 min
Delta R.T.: -0.006 min
Response: 2043899
Conc: 20.39 ug/ml



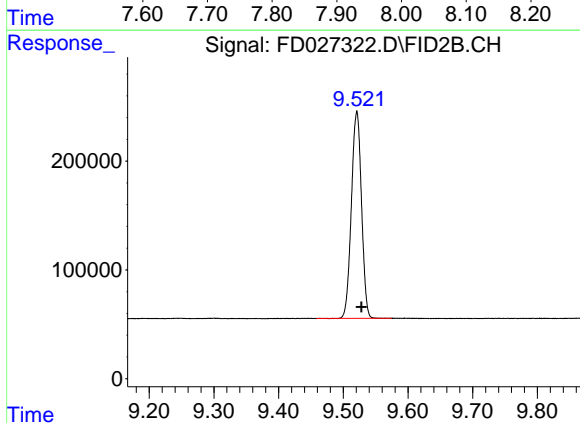
#5 A~2-methylnaphthalene (C12.89)

R.T.: 6.745 min
Delta R.T.: -0.005 min
Response: 2369878
Conc: 21.22 ug/ml



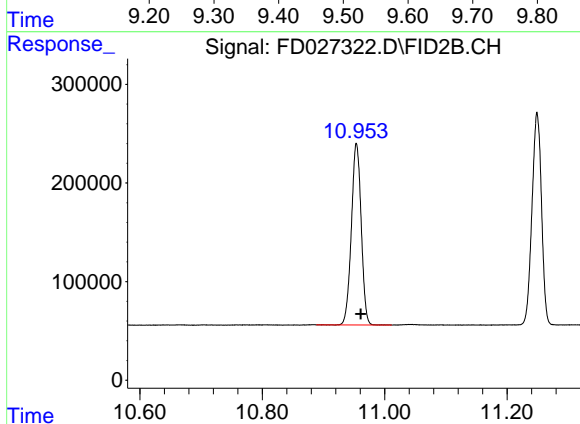
#6 n-Tetradecane (C14)

R.T.: 7.930 min
Delta R.T.: -0.006 min
Response: 2081665
Conc: 20.50 ug/ml



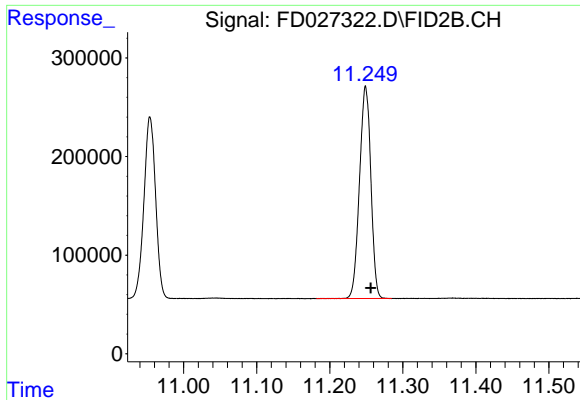
#7 n-Hexadecane (C16)

R.T.: 9.521 min
Delta R.T.: -0.007 min
Response: 2066229
Conc: 20.36 ug/ml



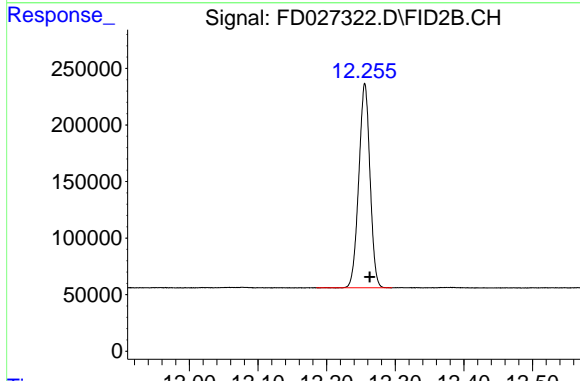
#8 n-Octadecane (C18)

R.T.: 10.954 min
Delta R.T.: -0.007 min
Response: 2045635
Conc: 20.15 ug/ml



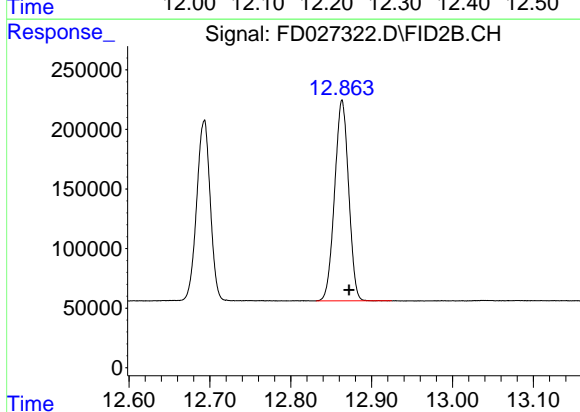
#9 ortho-Terphenyl (SURR)

R.T.: 11.249 min
 Delta R.T.: -0.007 min
 Response: 2323459
 Conc: 20.90 ug/ml



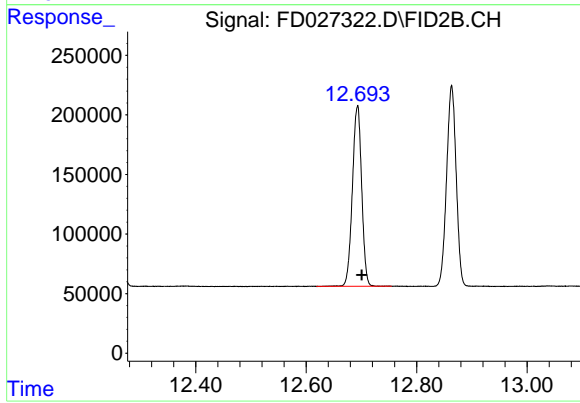
#10 n-Eicosane (C20)

R.T.: 12.256 min
 Delta R.T.: -0.007 min
 Response: 2048465
 Conc: 20.46 ug/ml



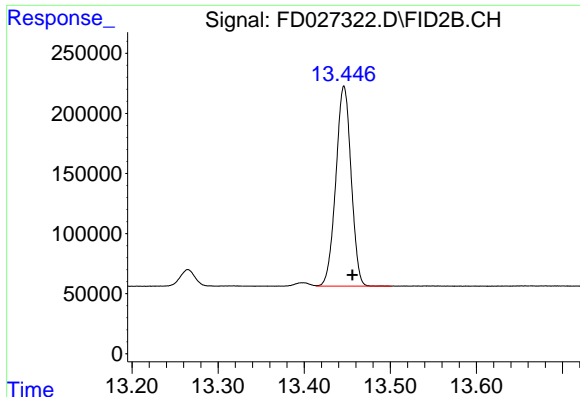
#11 n-Heneicosane (C21)

R.T.: 12.863 min
 Delta R.T.: -0.009 min
 Response: 2024500
 Conc: 20.51 ug/ml



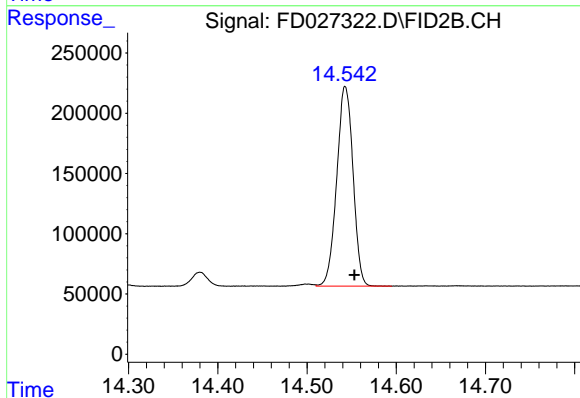
#12 1-chlorooctadecane (SURR)

R.T.: 12.693 min
 Delta R.T.: -0.008 min
 Response: 1766462
 Conc: 20.64 ug/ml



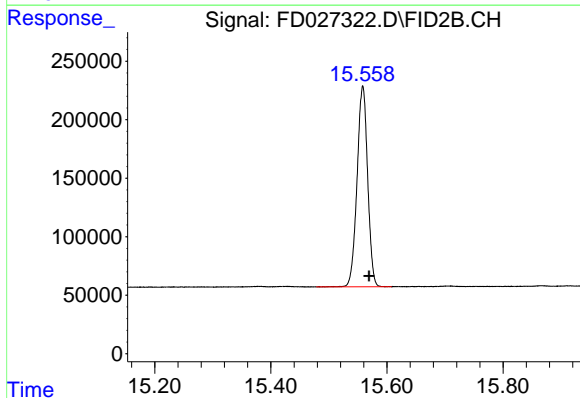
#13 n-Docosane (C22)

R.T.: 13.446 min
Delta R.T.: -0.010 min
Response: 2052657
Conc: 20.97 ug/ml



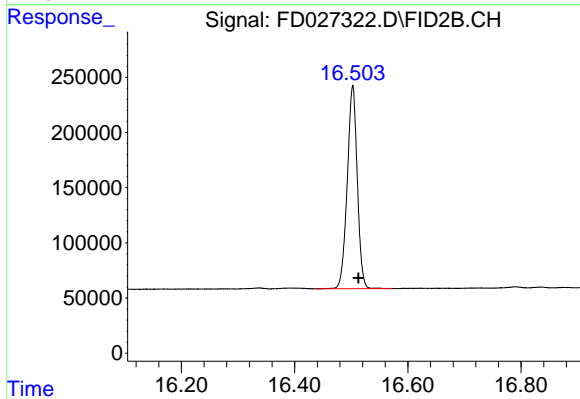
#14 n-Tetracosane (C24)

R.T.: 14.543 min
Delta R.T.: -0.010 min
Response: 2101159
Conc: 21.77 ug/ml



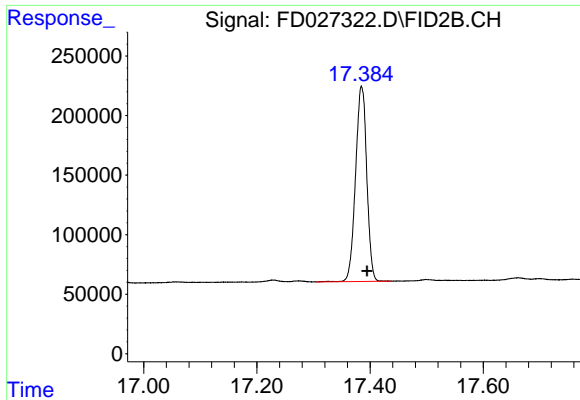
#15 n-Hexacosane (C26)

R.T.: 15.558 min
Delta R.T.: -0.011 min
Response: 2172262
Conc: 23.10 ug/ml

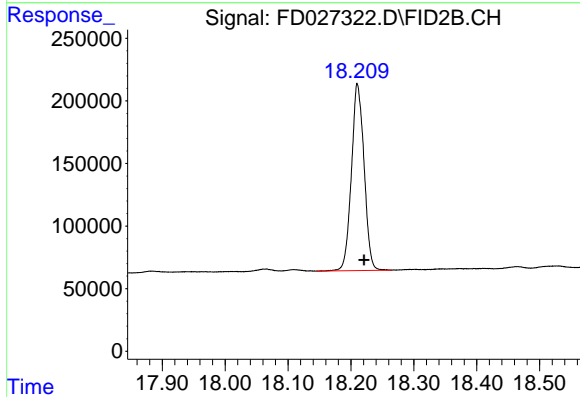


#16 n-Octacosane (C28)

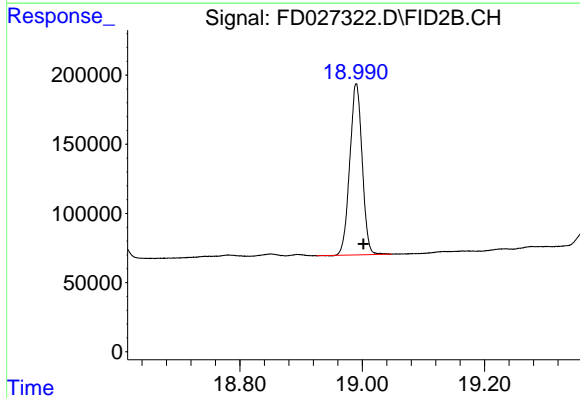
R.T.: 16.503 min
Delta R.T.: -0.010 min
Response: 2265097
Conc: 24.40 ug/ml



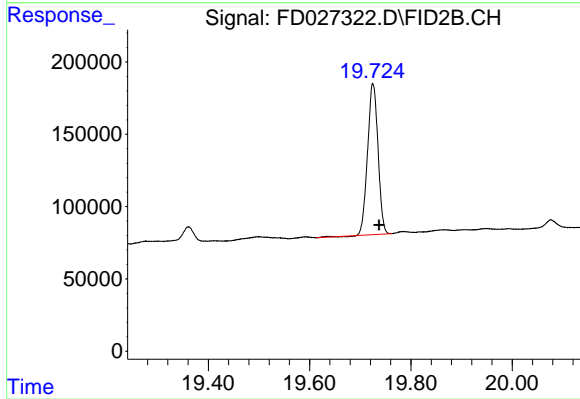
#17 n-Tricontane (C30)
R.T.: 17.385 min
Delta R.T.: -0.010 min
Response: 2252110
Conc: 25.01 ug/ml



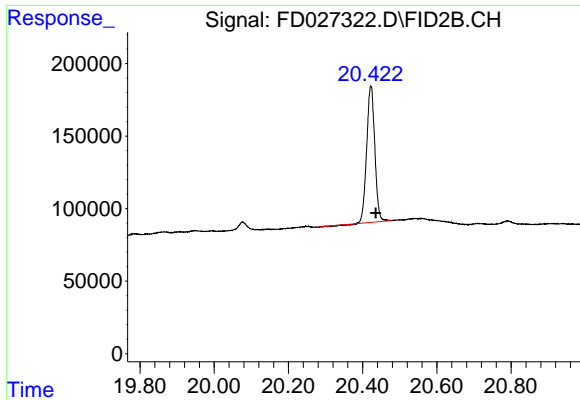
#18 n-Dotriacontane (C32)
R.T.: 18.211 min
Delta R.T.: -0.010 min
Response: 2081290
Conc: 24.40 ug/ml



#19 n-Tetratriacontane (C34)
R.T.: 18.990 min
Delta R.T.: -0.012 min
Response: 1735952
Conc: 23.55 ug/ml

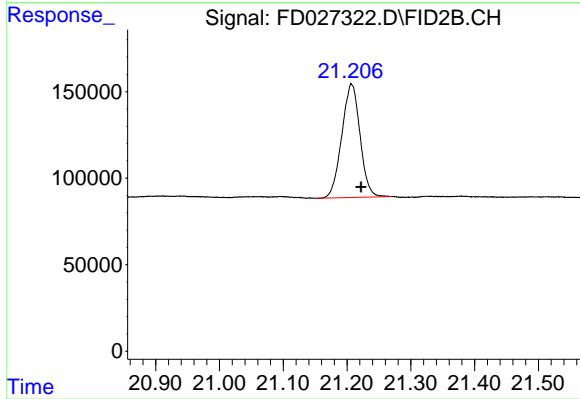


#20 n-Hexatriacontane (C36)
R.T.: 19.725 min
Delta R.T.: -0.012 min
Response: 1497496
Conc: 22.48 ug/ml



#21 n-Octatriacontane (C38)

R.T.: 20.422 min
Delta R.T.: -0.013 min
Response: 1422911
Conc: 21.93 ug/ml



#22 n-Tetracontane (C40)

R.T.: 21.207 min
Delta R.T.: -0.015 min
Response: 1304581
Conc: 20.78 ug/ml