

Data Path : Z:\pestpcbsrv\HPCHEM1\FID_D\Data\FD011822AR\
 Data File : FD040656.D
 Signal(s) : FID2B.CH
 Acq On : 18 Jan 2022 13:47
 Operator : AJ\MA
 Sample : N1138-02
 Misc :
 ALS Vial : 58 Sample Multiplier: 1

Instrument :
 FID_D
 ClientSampleId :
 POST-EX-HAZ-BTM

Integration File: autoint1.e
 Quant Time: Jan 19 01:23:20 2022
 Quant Method : Z:\pestpcbsrv\HPCHEM1\FID_D\methods\Aromatic EPH 010422.M
 Quant Title : GC Extractables
 QLast Update : Wed Jan 05 01:13:45 2022
 Response via : Initial Calibration
 Integrator: ChemStation 6890 Scale Mode: Large solvent peaks clipped

Volume Inj. : 1 µl
 Signal Phase : Rxi-1ms
 Signal Info : 20M x 0.18mm x 0.18µm

Compound	R.T.	Response	Conc Units

System Monitoring Compounds			
4) S 2-Bromonaphthalene (S...	6.732	8025062	56.111 ug/ml
Spiked Amount 50.000		Recovery =	112.22%
6) S 2-Fluorobiphenyl (SURR)	7.580	5364628	56.338 ug/ml
Spiked Amount 50.000 Range 0 - 131		Recovery =	112.68%
11) S ortho-Terphenyl (SURR)	10.615	7054643	45.141 ug/ml
Spiked Amount 50.000		Recovery =	90.28%

Target Compounds

(f)=RT Delta > 1/2 Window

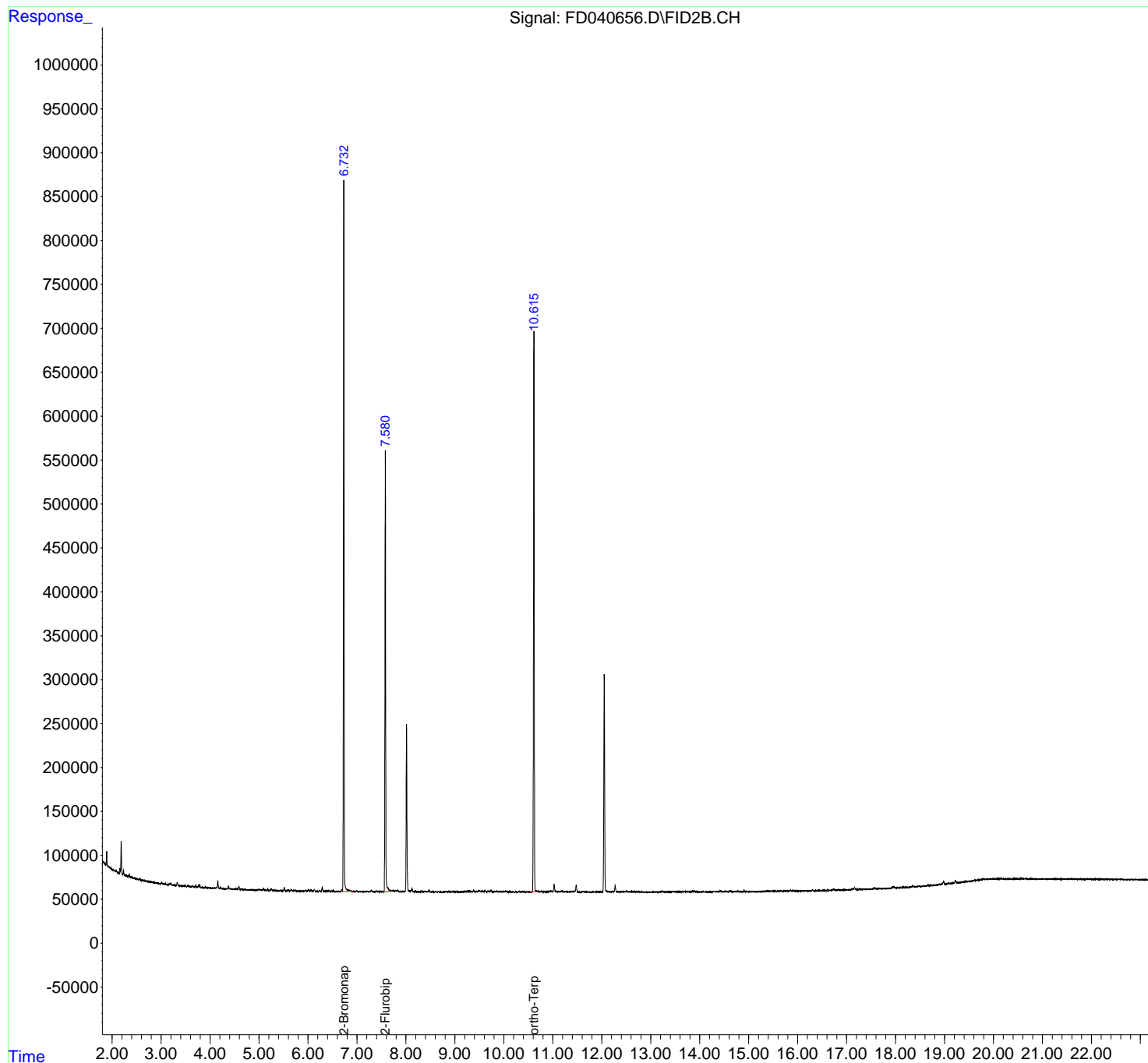
(m)=manual int.

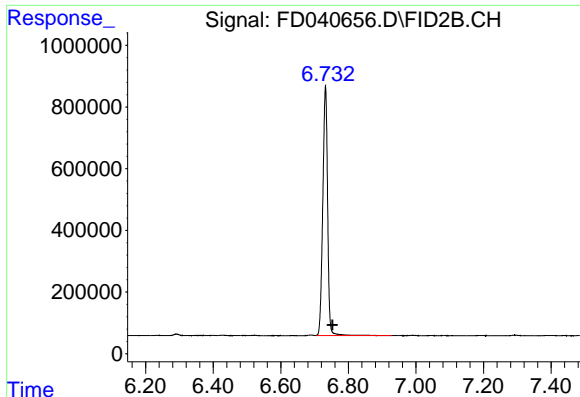
Data Path : Z:\pestpcbsrv\HPCHEM1\FID_D\Data\FD011822AR\
Data File : FD040656.D
Signal(s) : FID2B.CH
Acq On : 18 Jan 2022 13:47
Operator : AJ\MA
Sample : N1138-02
Misc :
ALS Vial : 58 Sample Multiplier: 1

Instrument :
FID_D
ClientSampleId :
POST-EX-HAZ-BTM

Integration File: autoint1.e
Quant Time: Jan 19 01:23:20 2022
Quant Method : Z:\pestpcbsrv\HPCHEM1\FID_D\methods\Aromatic EPH 010422.M
Quant Title : GC Extractables
QLast Update : Wed Jan 05 01:13:45 2022
Response via : Initial Calibration
Integrator: ChemStation 6890 Scale Mode: Large solvent peaks clipped

Volume Inj. : 1 µl
Signal Phase : Rxi-1ms
Signal Info : 20M x 0.18mm x 0.18µm

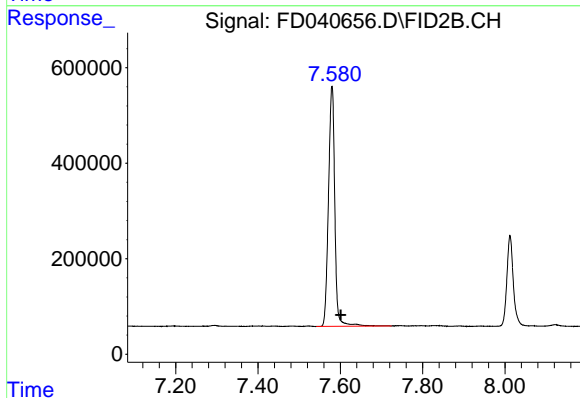




#4 2-Bromonaphthalene (SURR)

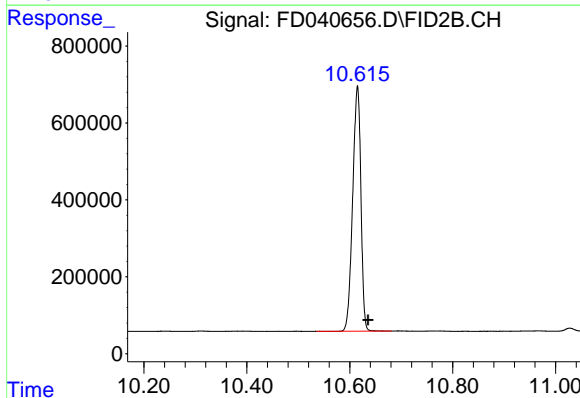
R.T.: 6.732 min
Delta R.T.: -0.021 min
Response: 8025062
Conc: 56.11 ug/ml

Instrument :
FID_D
ClientSampleId :
POST-EX-HAZ-BTM



#6 2-Fluorobiphenyl (SURR)

R.T.: 7.580 min
Delta R.T.: -0.021 min
Response: 5364628
Conc: 56.34 ug/ml



#11 ortho-Terphenyl (SURR)

R.T.: 10.615 min
Delta R.T.: -0.021 min
Response: 7054643
Conc: 45.14 ug/ml