

Data Path : Z:\pestpcbsrv\HPCHEM1\FID\_D\Data\FD012022AL\  
 Data File : FD040687.D  
 Signal(s) : FID2B.CH  
 Acq On : 20 Jan 2022 16:16  
 Operator : AJ\MA  
 Sample : N1189-01  
 Misc :  
 ALS Vial : 57 Sample Multiplier: 1

Integration File: autoint1.e  
 Quant Time: Jan 21 00:36:04 2022  
 Quant Method : Z:\pestpcbsrv\HPCHEM1\FID\_D\methods\Aliphatic EPH 010422.M  
 Quant Title : GC Extractables  
 QLast Update : Wed Jan 05 07:08:39 2022  
 Response via : Initial Calibration  
 Integrator: ChemStation 6890 Scale Mode: Large solvent peaks clipped

Volume Inj. : 1 ul  
 Signal Phase : Rxi-1ms  
 Signal Info : 20M x 0.18mm x 0.18um

Compound	R.T.	Response	Conc Units
-----			
System Monitoring Compounds			
9) S ortho-Terphenyl (SURR)	10.619	5069084	32.876 ug/ml
Spiked Amount	50.000	Recovery	= 65.75%
12) S 1-chlorooctadecane (S...	12.056	3792987	32.224 ug/ml
Spiked Amount	50.000	Recovery	= 64.45%

Target Compounds

-----

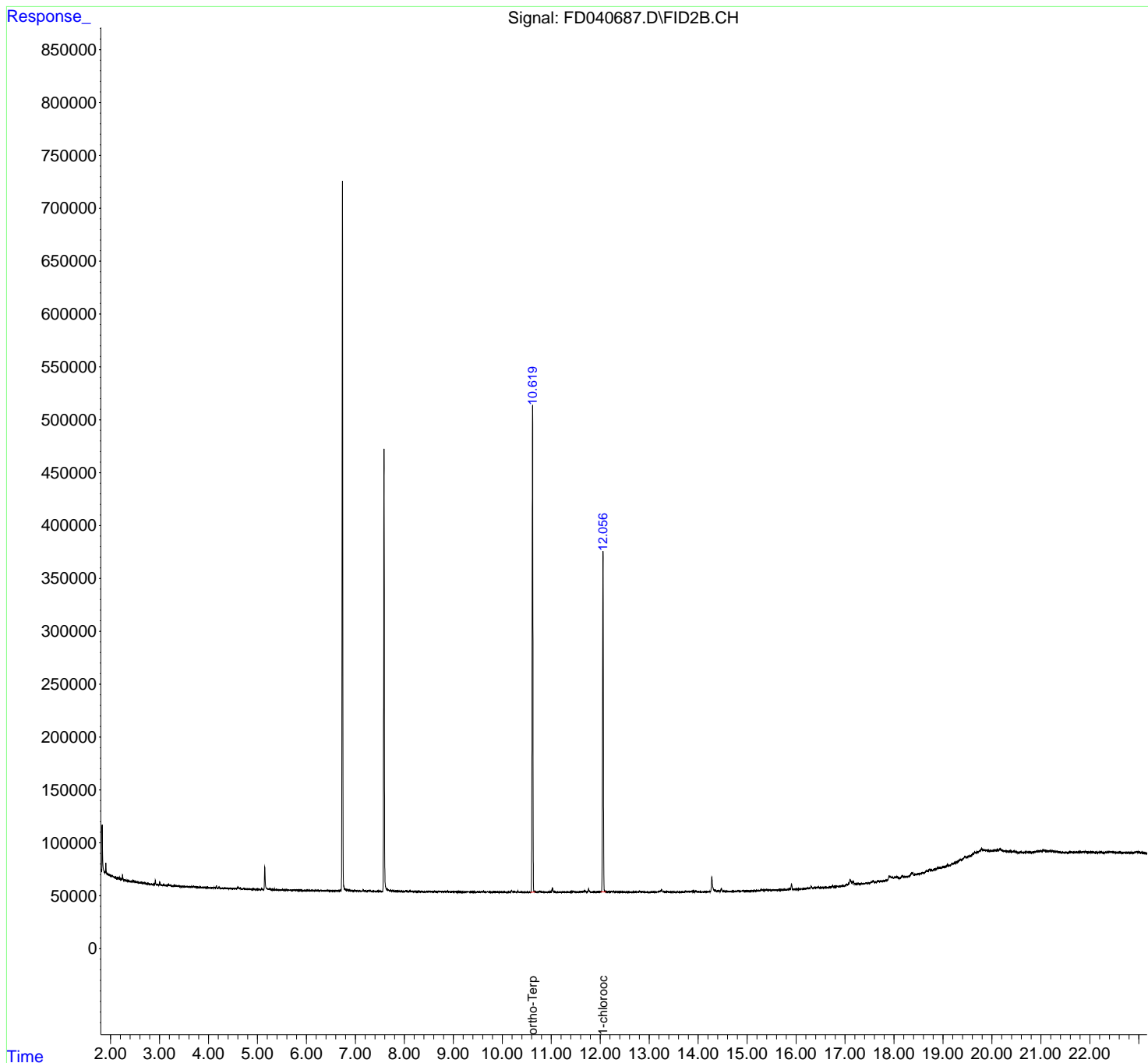
(f)=RT Delta > 1/2 Window

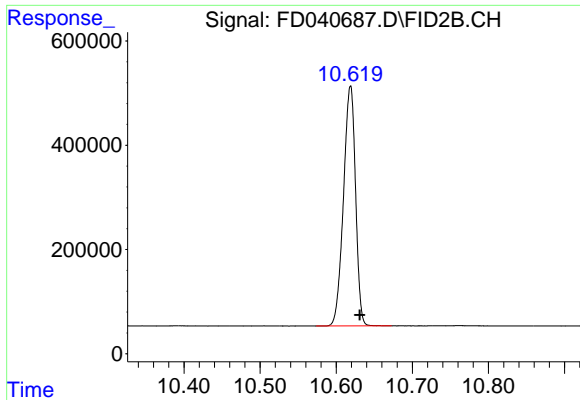
(m)=manual int.

Data Path : Z:\pestpcbsrv\HPCHEM1\FID\_D\Data\FD012022AL\  
 Data File : FD040687.D  
 Signal(s) : FID2B.CH  
 Acq On : 20 Jan 2022 16:16  
 Operator : AJ\MA  
 Sample : N1189-01  
 Misc :  
 ALS Vial : 57 Sample Multiplier: 1

Integration File: autoint1.e  
 Quant Time: Jan 21 00:36:04 2022  
 Quant Method : Z:\pestpcbsrv\HPCHEM1\FID\_D\methods\Aliphatic EPH 010422.M  
 Quant Title : GC Extractables  
 QLast Update : Wed Jan 05 07:08:39 2022  
 Response via : Initial Calibration  
 Integrator: ChemStation 6890 Scale Mode: Large solvent peaks clipped

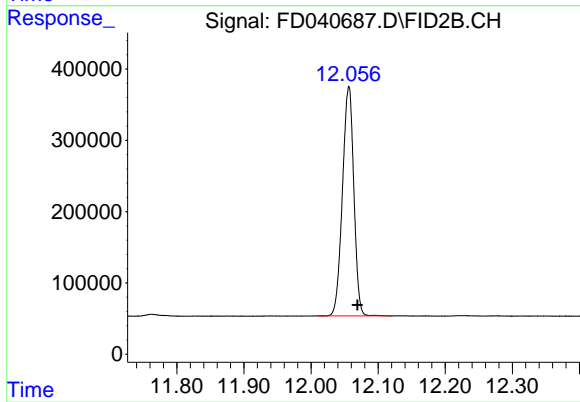
Volume Inj. : 1 ul  
 Signal Phase : Rxi-1ms  
 Signal Info : 20M x 0.18mm x 0.18um





#9 ortho-Terphenyl (SURR)

R.T.: 10.619 min  
Delta R.T.: -0.012 min  
Response: 5069084  
Conc: 32.88 ug/ml



#12 1-chlorooctadecane (SURR)

R.T.: 12.056 min  
Delta R.T.: -0.013 min  
Response: 3792987  
Conc: 32.22 ug/ml