

Data Path : Z:\pestpcbsrv\HPCHEM1\FID_D\Data\FD012119AL\
 Data File : FD027366.D
 Signal(s) : FID2B.CH
 Acq On : 22 Jan 2019 6:11
 Operator : AJ\SJ
 Sample : K1013-07
 Misc :
 ALS Vial : 68 Sample Multiplier: 1

Integration File: sample.E
 Quant Time: Jan 22 07:49:39 2019
 Quant Method : Z:\pestpcbsrv\HPCHEM1\FID_D\methods\Alaphatic EPH 010719.M
 Quant Title : GC Extractables
 QLast Update : Tue Jan 08 08:17:25 2019
 Response via : Initial Calibration
 Integrator: ChemStation 6890 Scale Mode: Large solvent peaks clipped

Volume Inj. : 1 ul
 Signal Phase : Rxi-1ms
 Signal Info : 20M x 0.18mm x 0.18um

Compound	R.T.	Response	Conc Units
System Monitoring Compounds			
9) S ortho-Terphenyl (SURR)	11.245	2462841	22.152 ug/ml
Spiked Amount	50.000	Recovery =	44.30%
12) S 1-chlorooctadecane (S...	12.681	7259093	84.825 ug/ml
Spiked Amount	50.000	Recovery =	169.65%

Target Compounds

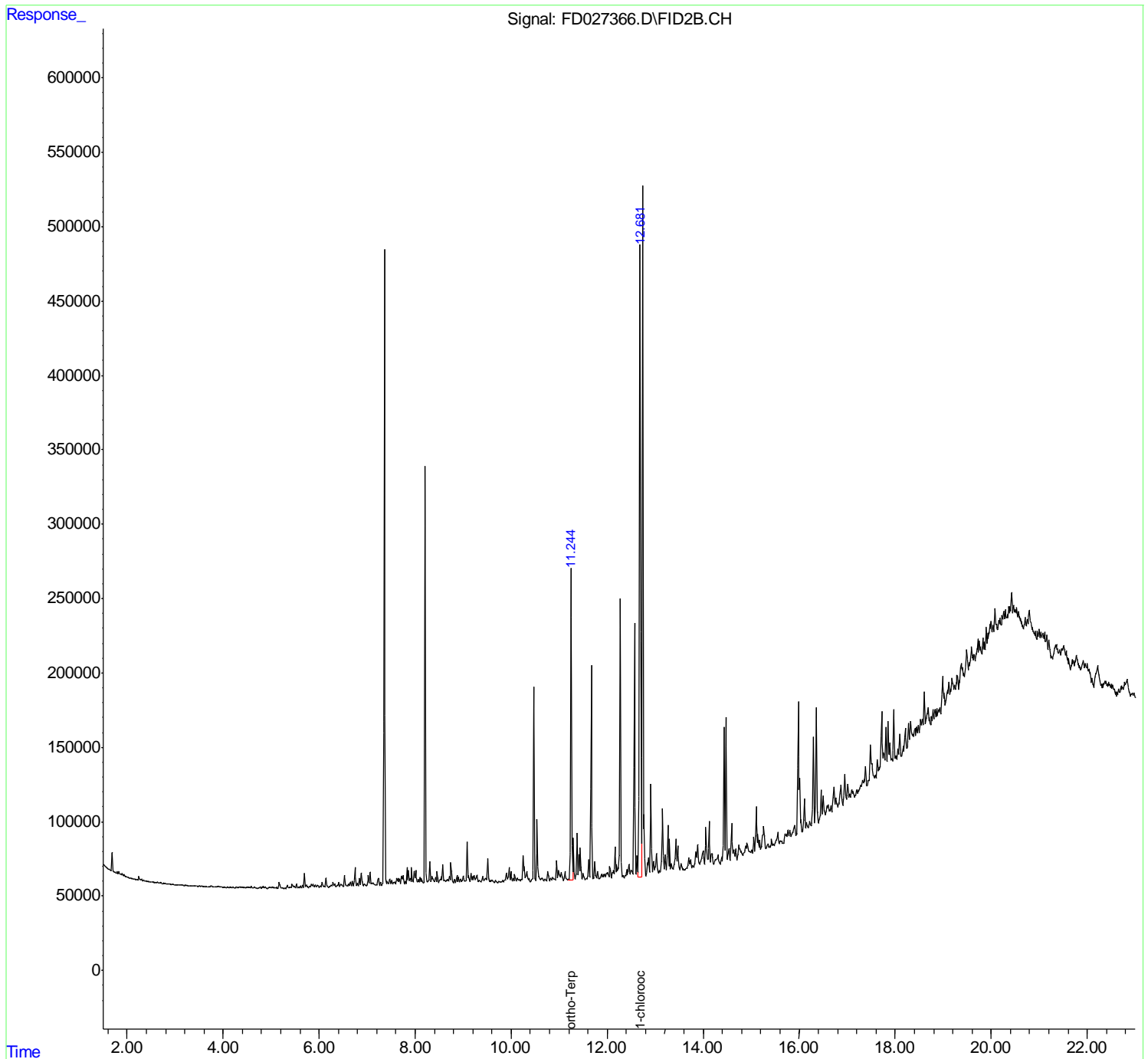
(f)=RT Delta > 1/2 Window

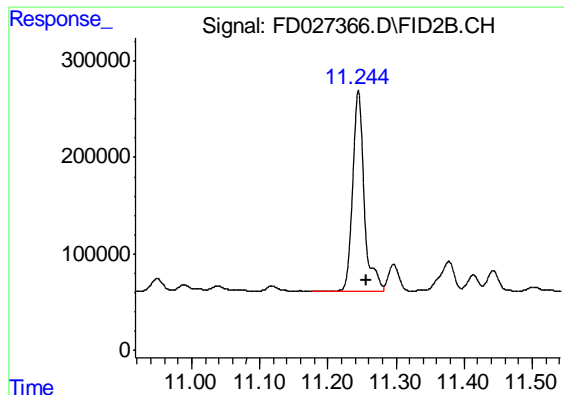
(m)=manual int.

Data Path : Z:\pestpcbsrv\HPCHEM1\FID_D\Data\FD012119AL\
 Data File : FD027366.D
 Signal(s) : FID2B.CH
 Acq On : 22 Jan 2019 6:11
 Operator : AJ\SJ
 Sample : K1013-07
 Misc :
 ALS Vial : 68 Sample Multiplier: 1

Integration File: sample.E
 Quant Time: Jan 22 07:49:39 2019
 Quant Method : Z:\pestpcbsrv\HPCHEM1\FID_D\methods\Alaphatic EPH 010719.M
 Quant Title : GC Extractables
 QLast Update : Tue Jan 08 08:17:25 2019
 Response via : Initial Calibration
 Integrator: ChemStation 6890 Scale Mode: Large solvent peaks clipped

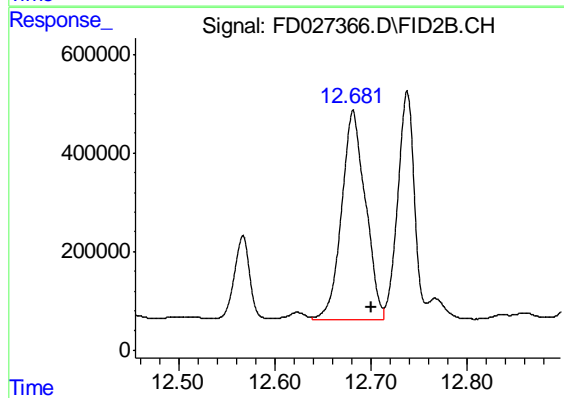
Volume Inj. : 1 ul
 Signal Phase : Rxi-1ms
 Signal Info : 20M x 0.18mm x 0.18um





#9 ortho-Terphenyl (SURR)

R.T.: 11.245 min
Delta R.T.: -0.011 min
Response: 2462841
Conc: 22.15 ug/ml



#12 1-chlorooctadecane (SURR)

R.T.: 12.681 min
Delta R.T.: -0.020 min
Response: 7259093
Conc: 84.83 ug/ml