

Data Path : Z:\pestpcbsrv\HPCHEM1\FID\_D\Data\FD012519AR\  
 Data File : FD027445.D  
 Signal(s) : FID2B.CH  
 Acq On : 26 Jan 2019 9:44  
 Operator : AJ\SJ  
 Sample : K1238-37  
 Misc :  
 ALS Vial : 80 Sample Multiplier: 1

Integration File: autoint1.e  
 Quant Time: Jan 28 04:28:54 2019  
 Quant Method : Z:\pestpcbsrv\HPCHEM1\FID\_D\methods\Aromatic EPH 010719.M  
 Quant Title : GC Extractables  
 QLast Update : Tue Jan 08 07:22:50 2019  
 Response via : Initial Calibration  
 Integrator: ChemStation 6890 Scale Mode: Large solvent peaks clipped

Volume Inj. : 1 µl  
 Signal Phase : Rxi-1ms  
 Signal Info : 20M x 0.18mm x 0.18µm

Compound	R.T.	Response	Conc Units
System Monitoring Compounds			
4) S 2-Bromonaphthalene (S...	7.352	2673540	28.302 ug/ml
Spiked Amount	50.000	Recovery =	56.60%
6) S 2-Fluorobiphenyl (SURR)	8.201	1841898	28.883 ug/ml
Spiked Amount	50.000 Range 0 - 131	Recovery =	57.77%
11) S ortho-Terphenyl (SURR)	11.240	1684144	15.800 ug/ml
Spiked Amount	50.000	Recovery =	31.60%

Target Compounds

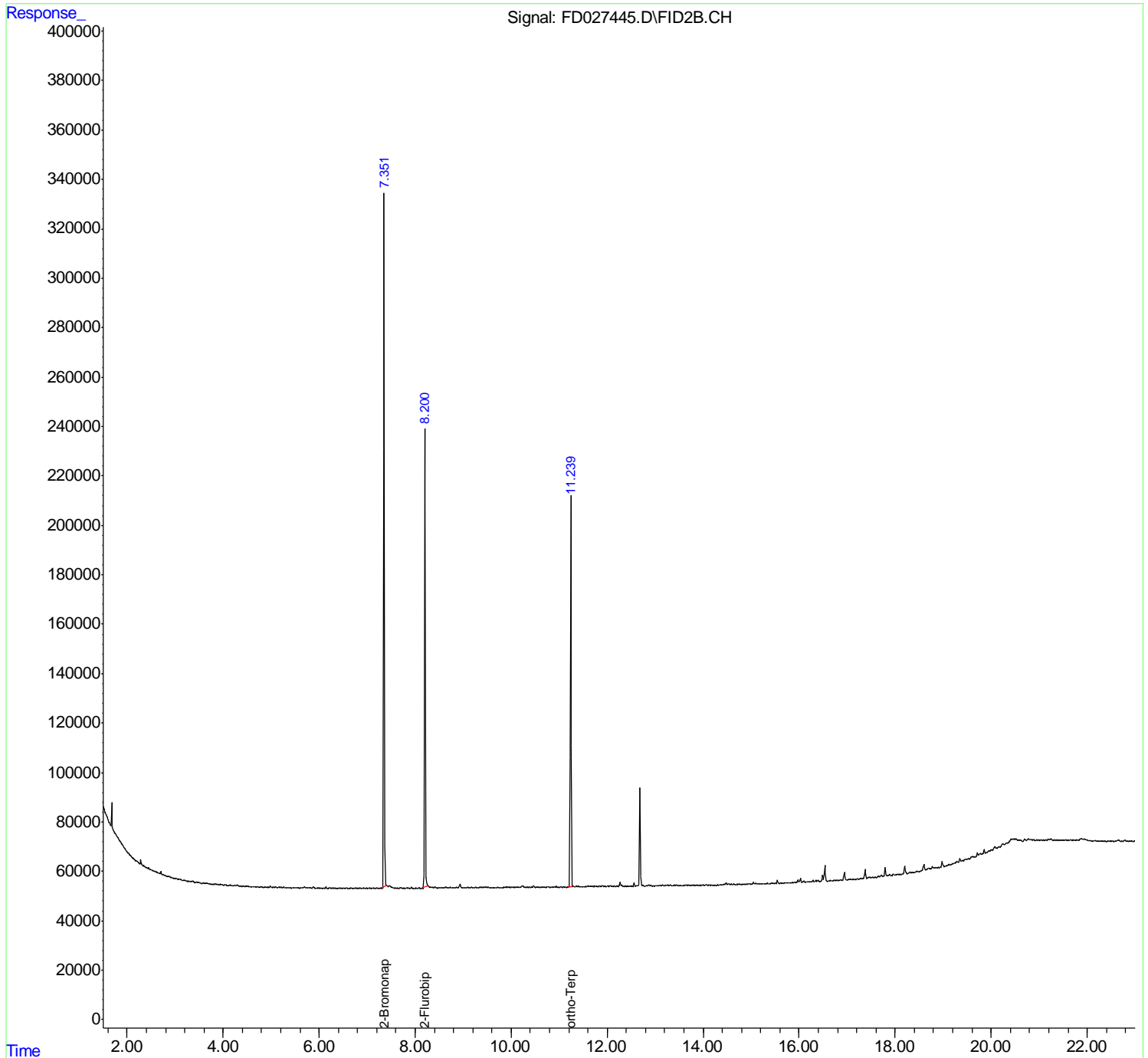
(f)=RT Delta > 1/2 Window

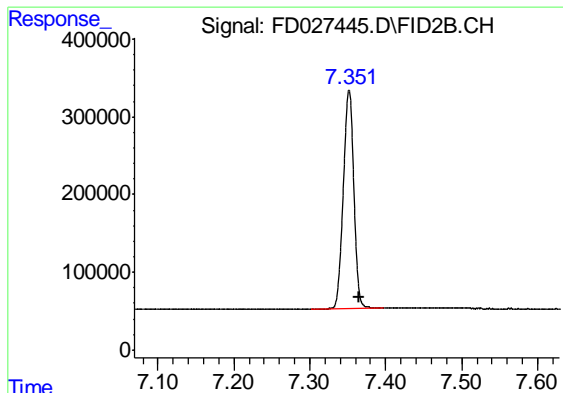
(m)=manual int.

Data Path : Z:\pestpcbsrv\HPCHEM1\FID\_D\Data\FD012519AR\  
 Data File : FD027445.D  
 Signal(s) : FID2B.CH  
 Acq On : 26 Jan 2019 9:44  
 Operator : AJ\SJ  
 Sample : K1238-37  
 Misc :  
 ALS Vial : 80 Sample Multiplier: 1

Integration File: autoint1.e  
 Quant Time: Jan 28 04:28:54 2019  
 Quant Method : Z:\pestpcbsrv\HPCHEM1\FID\_D\methods\Aromatic EPH 010719.M  
 Quant Title : GC Extractables  
 QLast Update : Tue Jan 08 07:22:50 2019  
 Response via : Initial Calibration  
 Integrator: ChemStation 6890 Scale Mode: Large solvent peaks clipped

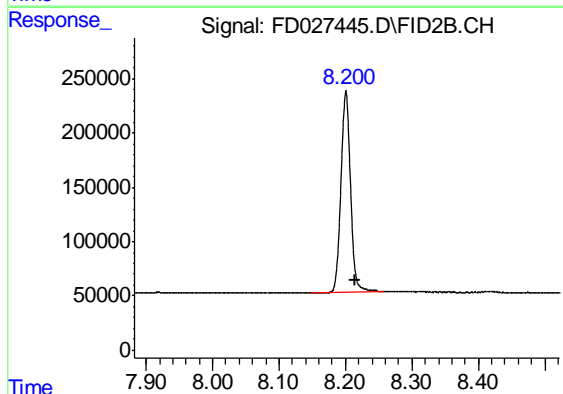
Volume Inj. : 1 µl  
 Signal Phase : Rxi-1ms  
 Signal Info : 20M x 0.18mm x 0.18µm





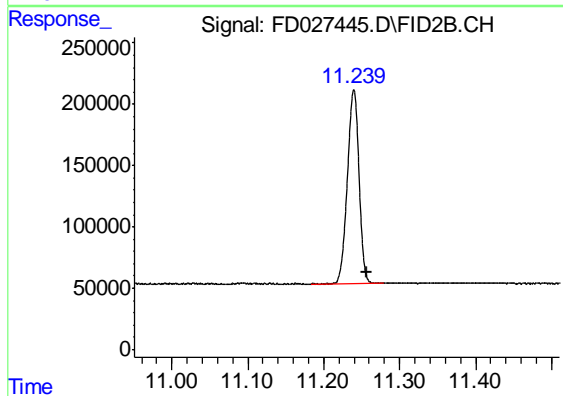
#4 2-Bromonaphthalene (SURR)

R.T.: 7.352 min  
Delta R.T.: -0.014 min  
Response: 2673540  
Conc: 28.30 ug/ml



#6 2-Fluorobiphenyl (SURR)

R.T.: 8.201 min  
Delta R.T.: -0.015 min  
Response: 1841898  
Conc: 28.88 ug/ml



#11 ortho-Terphenyl (SURR)

R.T.: 11.240 min  
Delta R.T.: -0.017 min  
Response: 1684144  
Conc: 15.80 ug/ml