

Data Path : Z:\pestpcbsrv\HPCHEM1\FID\_D\Data\FD012519AR\  
 Data File : FD027451.D  
 Signal(s) : FID2B.CH  
 Acq On : 26 Jan 2019 13:21  
 Operator : AJ\SJ  
 Sample : K1238-45  
 Misc :  
 ALS Vial : 86 Sample Multiplier: 1

Integration File: autoint1.e  
 Quant Time: Jan 28 04:29:58 2019  
 Quant Method : Z:\pestpcbsrv\HPCHEM1\FID\_D\methods\Aromatic EPH 010719.M  
 Quant Title : GC Extractables  
 QLast Update : Tue Jan 08 07:22:50 2019  
 Response via : Initial Calibration  
 Integrator: ChemStation 6890 Scale Mode: Large solvent peaks clipped

Volume Inj. : 1 µl  
 Signal Phase : Rxi-1ms  
 Signal Info : 20M x 0.18mm x 0.18µm

Compound	R.T.	Response	Conc Units
System Monitoring Compounds			
4) S 2-Bromonaphthalene (S...	7.352	3327912	35.229 ug/ml
Spiked Amount 50.000		Recovery =	70.46%
6) S 2-Fluorobiphenyl (SURR)	8.200	2293886	35.970 ug/ml
Spiked Amount 50.000 Range 0 - 131		Recovery =	71.94%
11) S ortho-Terphenyl (SURR)	11.237	1280611	12.014 ug/ml
Spiked Amount 50.000		Recovery =	24.03%

Target Compounds

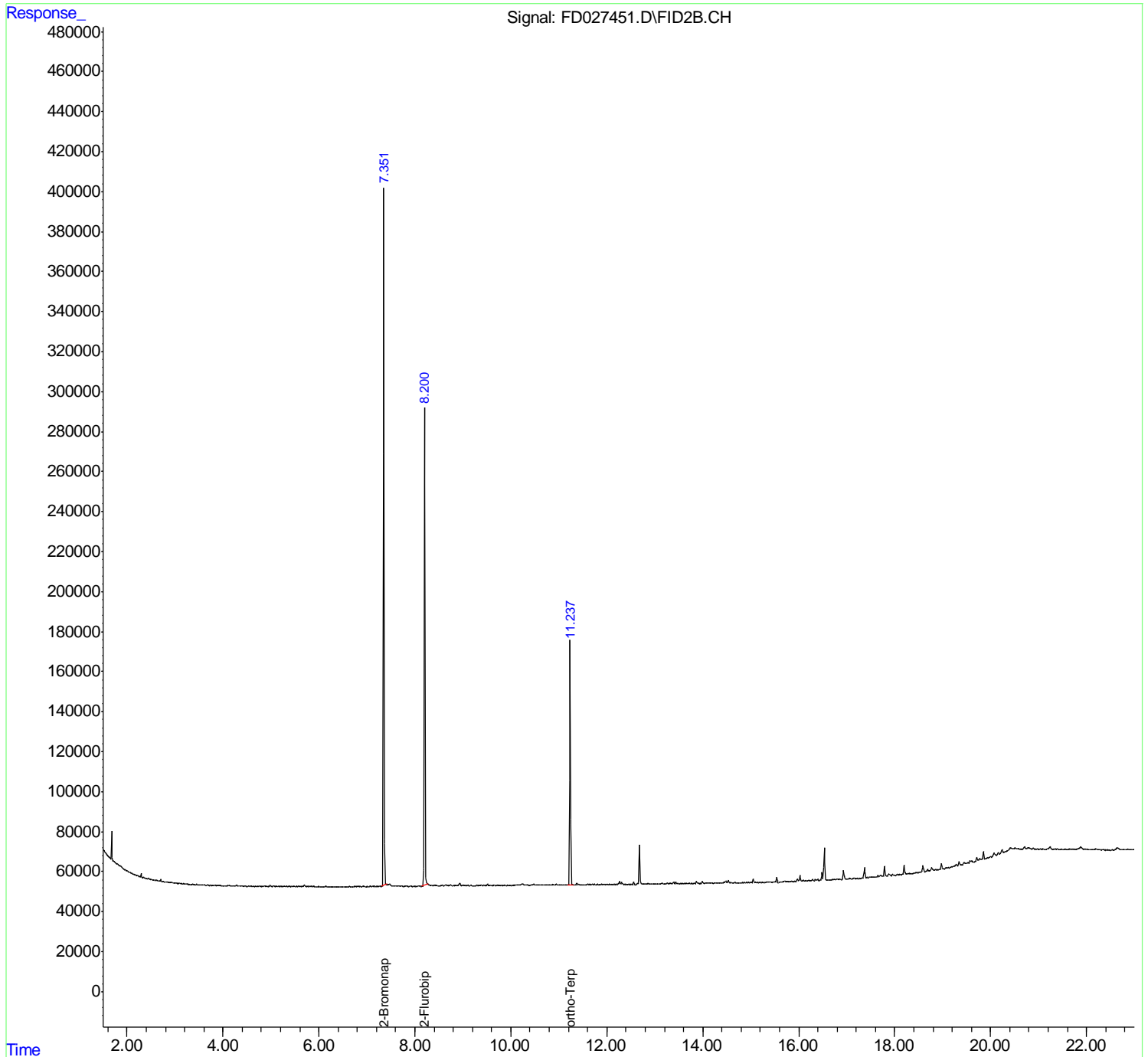
(f)=RT Delta > 1/2 Window

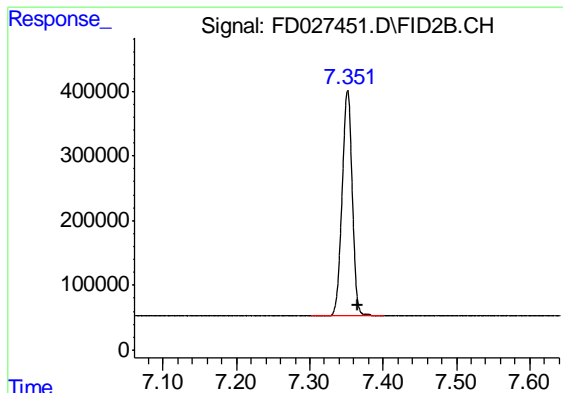
(m)=manual int.

Data Path : Z:\pestpcbsrv\HPCHEM1\FID\_D\Data\FD012519AR\  
 Data File : FD027451.D  
 Signal(s) : FID2B.CH  
 Acq On : 26 Jan 2019 13:21  
 Operator : AJ\SJ  
 Sample : K1238-45  
 Misc :  
 ALS Vial : 86 Sample Multiplier: 1

Integration File: autoint1.e  
 Quant Time: Jan 28 04:29:58 2019  
 Quant Method : Z:\pestpcbsrv\HPCHEM1\FID\_D\methods\Aromatic EPH 010719.M  
 Quant Title : GC Extractables  
 QLast Update : Tue Jan 08 07:22:50 2019  
 Response via : Initial Calibration  
 Integrator: ChemStation 6890 Scale Mode: Large solvent peaks clipped

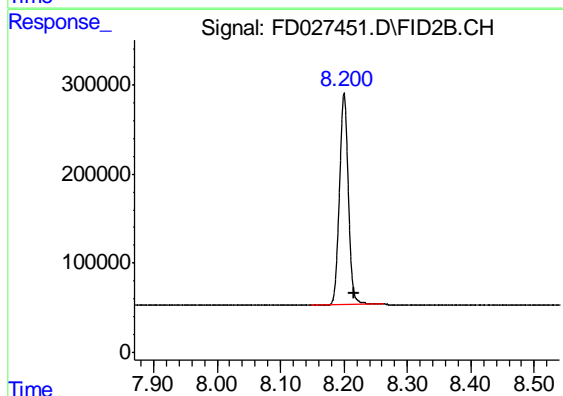
Volume Inj. : 1 µl  
 Signal Phase : Rxi-1ms  
 Signal Info : 20M x 0.18mm x 0.18µm





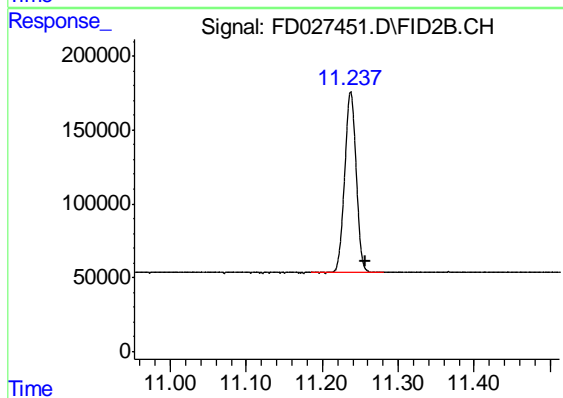
#4 2-Bromonaphthalene (SURR)

R.T.: 7.352 min  
Delta R.T.: -0.014 min  
Response: 3327912  
Conc: 35.23 ug/ml



#6 2-Fluorobiphenyl (SURR)

R.T.: 8.200 min  
Delta R.T.: -0.015 min  
Response: 2293886  
Conc: 35.97 ug/ml



#11 ortho-Terphenyl (SURR)

R.T.: 11.237 min  
Delta R.T.: -0.020 min  
Response: 1280611  
Conc: 12.01 ug/ml