

Data Path : Z:\pestpcbsrv\HPCHEM1\FID_D\Data\FD012521AL\
 Data File : FD036175.D
 Signal(s) : FID2B.CH
 Acq On : 25 Jan 2021 22:17
 Operator : DD\AJ
 Sample : M1220-06
 Misc :
 ALS Vial : 66 Sample Multiplier: 1

Integration File: autoint1.e
 Quant Time: Jan 26 03:58:43 2021
 Quant Method : Z:\pestpcbsrv\HPCHEM1\FID_D\methods\Alaphatic EPH 011121.M
 Quant Title : GC Extractables
 QLast Update : Tue Jan 12 02:11:59 2021
 Response via : Initial Calibration
 Integrator: ChemStation 6890 Scale Mode: Large solvent peaks clipped

Volume Inj. : 1 ul
 Signal Phase : Rxi-1ms
 Signal Info : 20M x 0.18mm x 0.18um

Compound	R.T.	Response	Conc Units

System Monitoring Compounds			
9) S ortho-Terphenyl (SURR)	11.528	6091241	41.092 ug/ml
Spiked Amount	50.000	Recovery	= 82.18%
12) S 1-chlorooctadecane (S...	12.960	4705372	40.002 ug/ml
Spiked Amount	50.000	Recovery	= 80.00%
Target Compounds			
6) T n-Tetradecane (C14)	8.145	424597	3.177 ug/ml
18) T n-Dotriacontane (C32)	18.472	370978	3.366 ug/ml
20) T n-Hexatriacontane (C36)	20.000	190266	2.115 ug/ml
21) T n-Octatriacontane (C38)	20.664	173376	2.087 ug/ml
22) T n-Tetracontane (C40)	21.579	685625	8.152 ug/ml

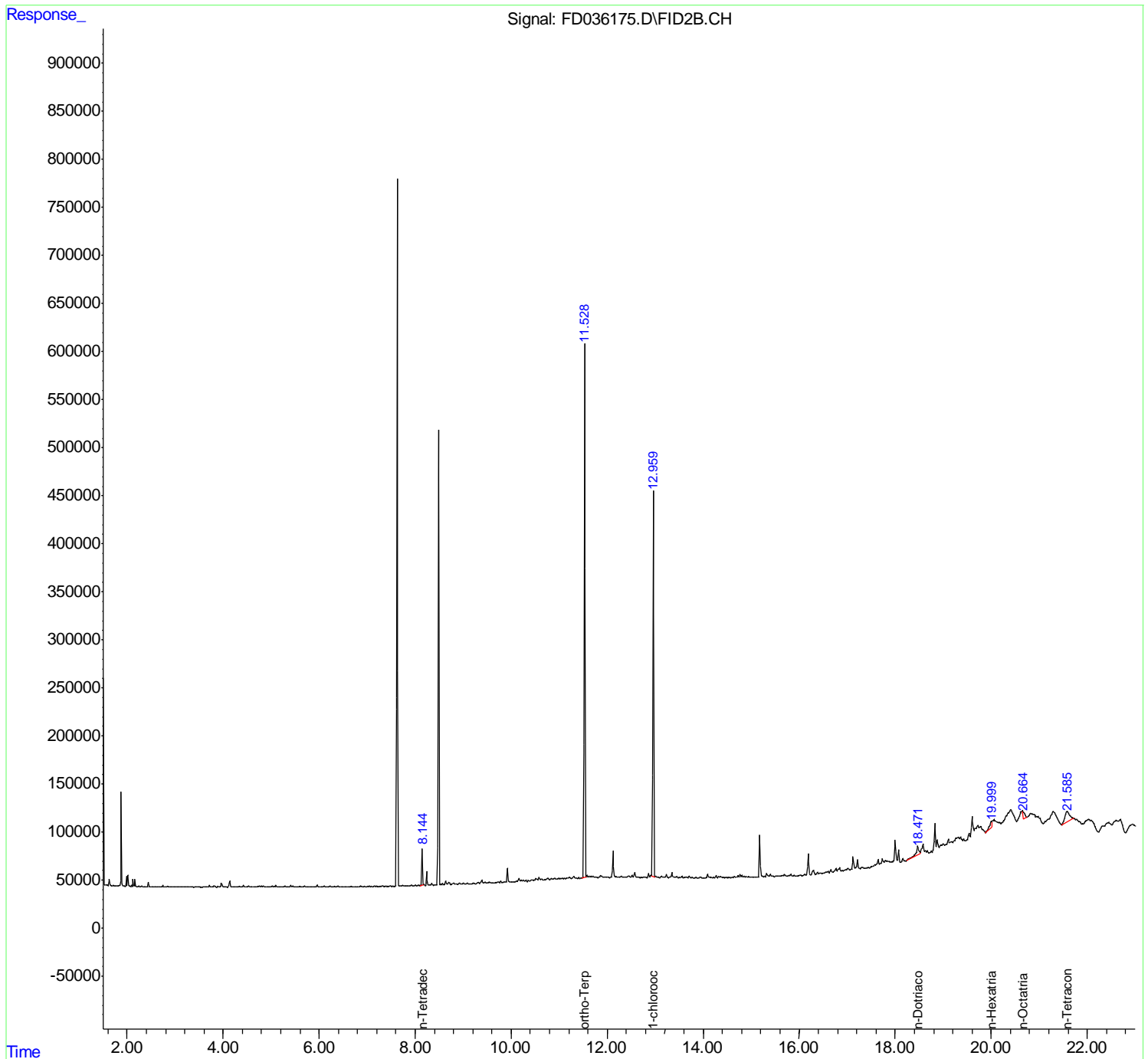
(f)=RT Delta > 1/2 Window

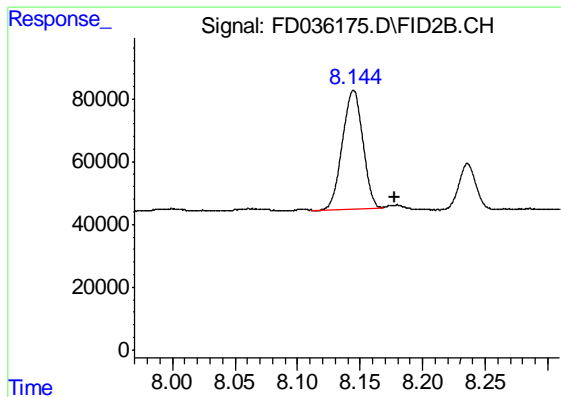
(m)=manual int.

Data Path : Z:\pestpcbsrv\HPCHEM1\FID_D\Data\FD012521AL\
Data File : FD036175.D
Signal(s) : FID2B.CH
Acq On : 25 Jan 2021 22:17
Operator : DD\AJ
Sample : M1220-06
Misc :
ALS Vial : 66 Sample Multiplier: 1

Integration File: autoint1.e
Quant Time: Jan 26 03:58:43 2021
Quant Method : Z:\pestpcbsrv\HPCHEM1\FID_D\methods\Alaphatic EPH 011121.M
Quant Title : GC Extractables
QLast Update : Tue Jan 12 02:11:59 2021
Response via : Initial Calibration
Integrator: ChemStation 6890 Scale Mode: Large solvent peaks clipped

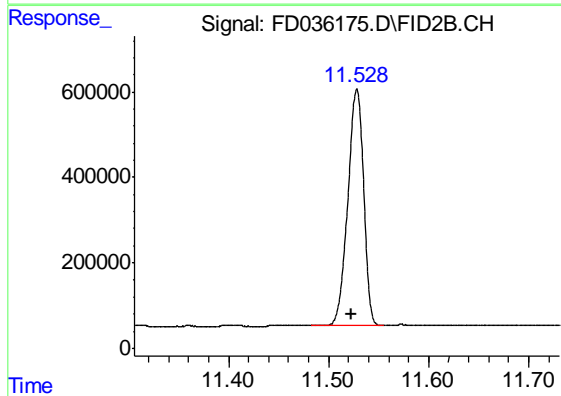
Volume Inj. : 1 ul
Signal Phase : Rxi-1ms
Signal Info : 20M x 0.18mm x 0.18um





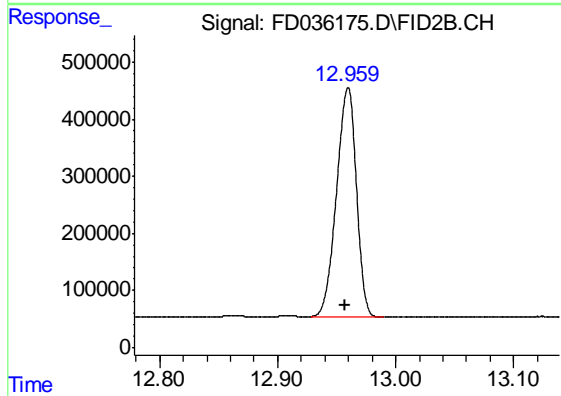
#6 n-Tetradecane (C14)

R.T.: 8.145 min
Delta R.T.: -0.034 min
Response: 424597
Conc: 3.18 ug/ml



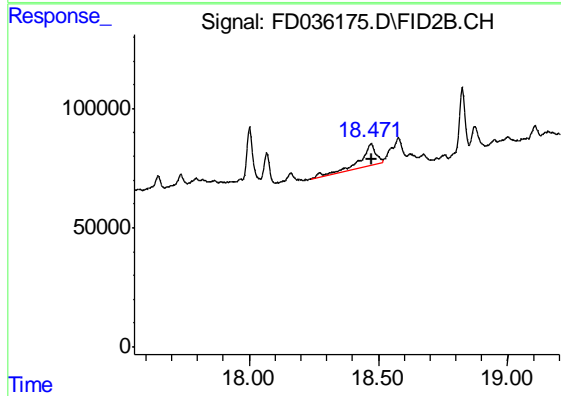
#9 ortho-Terphenyl (SURR)

R.T.: 11.528 min
Delta R.T.: 0.005 min
Response: 6091241
Conc: 41.09 ug/ml



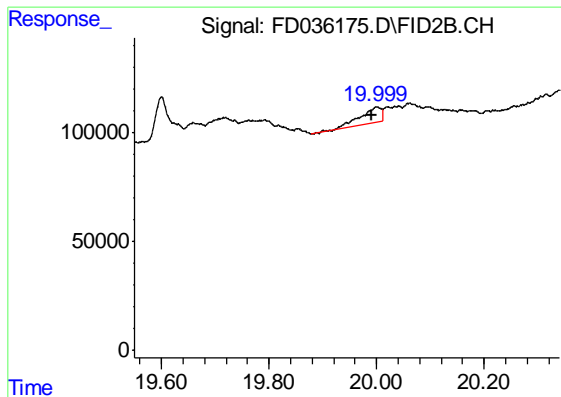
#12 1-chlorooctadecane (SURR)

R.T.: 12.960 min
Delta R.T.: 0.003 min
Response: 4705372
Conc: 40.00 ug/ml



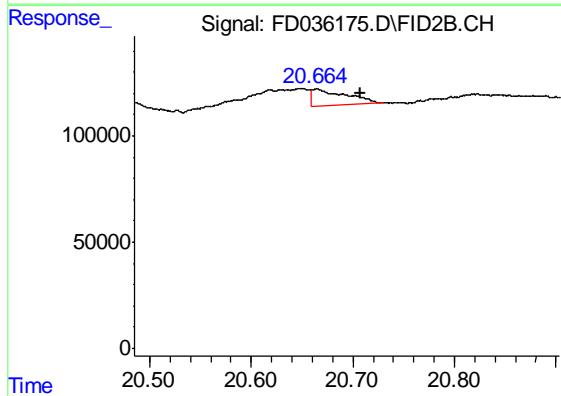
#18 n-Dotriacontane (C32)

R.T.: 18.472 min
Delta R.T.: -0.005 min
Response: 370978
Conc: 3.37 ug/ml



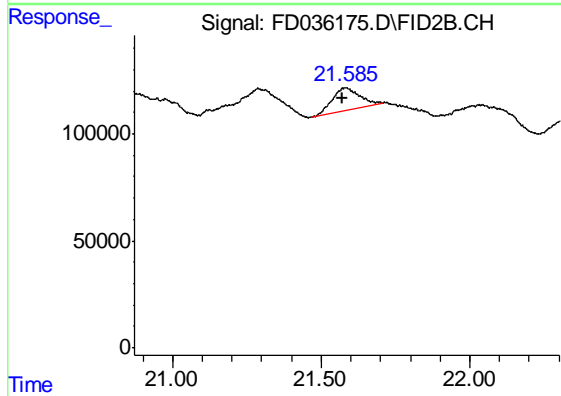
#20 n-Hexatriacontane (C36)

R.T.: 20.000 min
Delta R.T.: 0.009 min
Response: 190266
Conc: 2.12 ug/ml



#21 n-Octatriacontane (C38)

R.T.: 20.664 min
Delta R.T.: -0.043 min
Response: 173376
Conc: 2.09 ug/ml



#22 n-Tetracontane (C40)

R.T.: 21.579 min
Delta R.T.: 0.005 min
Response: 685625
Conc: 8.15 ug/ml