

Data Path : Z:\pestpcbsrv\HPCHEM1\FID_D\Data\FD012822AL\
 Data File : FD040828.D
 Signal(s) : FID2B.CH
 Acq On : 28 Jan 2022 21:53
 Operator : AJ\MA
 Sample : N1310-01
 Misc :
 ALS Vial : 67 Sample Multiplier: 1

Integration File: autoint1.e
 Quant Time: Jan 28 22:28:58 2022
 Quant Method : Z:\pestpcbsrv\HPCHEM1\FID_D\methods\Aliphatic EPH 010422.M
 Quant Title : GC Extractables
 QLast Update : Wed Jan 05 07:08:39 2022
 Response via : Initial Calibration
 Integrator: ChemStation 6890 Scale Mode: Large solvent peaks clipped

Volume Inj. : 1 ul
 Signal Phase : Rxi-1ms
 Signal Info : 20M x 0.18mm x 0.18um

Compound	R.T.	Response	Conc Units

System Monitoring Compounds			
9) S ortho-Terphenyl (SURR)	10.610	5957122	38.635 ug/mlm
Spiked Amount	50.000	Recovery	= 77.27%
12) S 1-chlorooctadecane (S...	12.046	4661430	39.602 ug/ml
Spiked Amount	50.000	Recovery	= 79.20%

Target Compounds

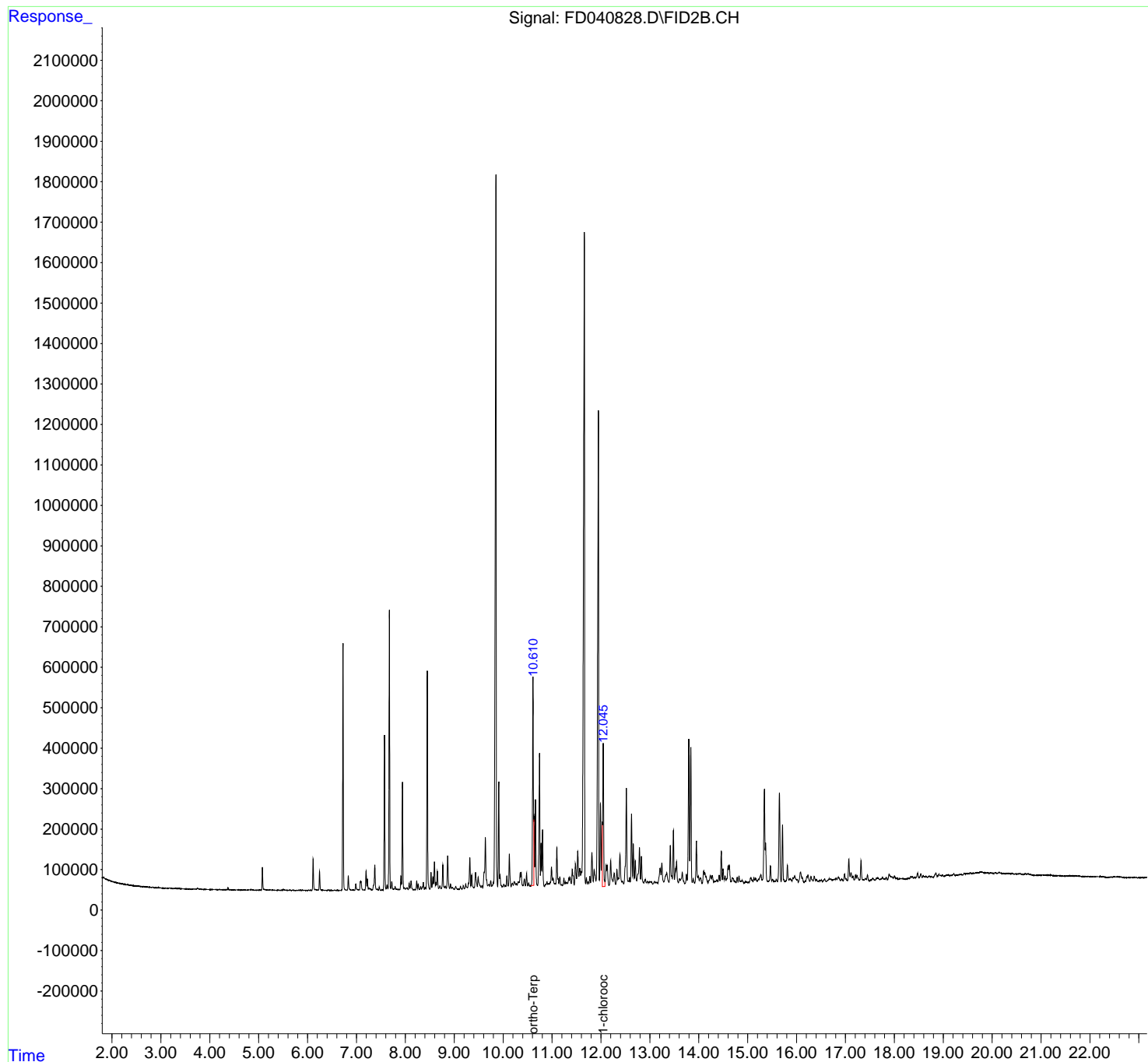
(f)=RT Delta > 1/2 Window

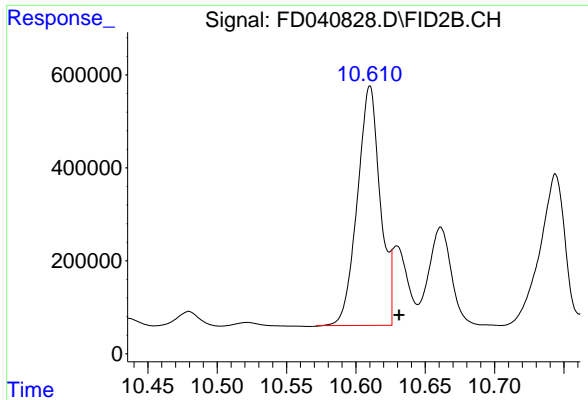
(m)=manual int.

Data Path : Z:\pestpcbsrv\HPCHEM1\FID_D\Data\FD012822AL\
Data File : FD040828.D
Signal(s) : FID2B.CH
Acq On : 28 Jan 2022 21:53
Operator : AJ\MA
Sample : N1310-01
Misc :
ALS Vial : 67 Sample Multiplier: 1

Integration File: autoint1.e
Quant Time: Jan 28 22:28:58 2022
Quant Method : Z:\pestpcbsrv\HPCHEM1\FID_D\methods\Aliphatic EPH 010422.M
Quant Title : GC Extractables
QLast Update : Wed Jan 05 07:08:39 2022
Response via : Initial Calibration
Integrator: ChemStation 6890 Scale Mode: Large solvent peaks clipped

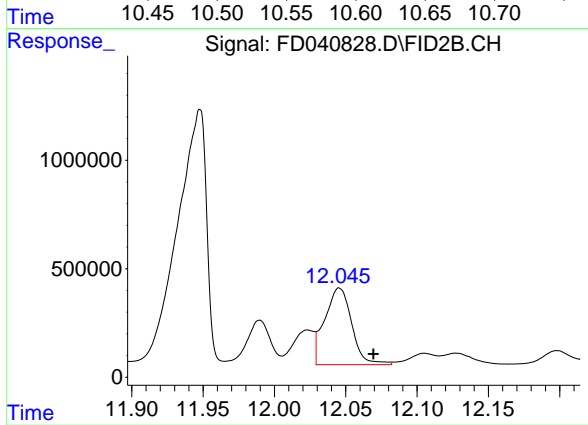
Volume Inj. : 1 ul
Signal Phase : Rxi-1ms
Signal Info : 20M x 0.18mm x 0.18um





#9 ortho-Terphenyl (SURR)

R.T.: 10.610 min
Delta R.T.: -0.021 min
Response: 5957122
Conc: 38.64 ug/ml m



#12 1-chlorooctadecane (SURR)

R.T.: 12.046 min
Delta R.T.: -0.024 min
Response: 4661430
Conc: 39.60 ug/ml