

Data Path : Z:\pestpcbsrv\HPCHEM1\FID_D\Data\FD013120AR\
 Data File : FD032248.D
 Signal(s) : FID2B.CH
 Acq On : 31 Jan 2020 19:02
 Operator : DD\AJ
 Sample : L1325-05
 Misc :
 ALS Vial : 66 Sample Multiplier: 1

Instrument :
 FID_D
 ClientSampleId :

Integration File: autoint1.e
 Quant Time: Feb 01 00:46:02 2020
 Quant Method : Z:\pestpcbsrv\HPCHEM1\FID_D\methods\Aromatic EPH 010620.M
 Quant Title : GC Extractables
 QLast Update : Tue Jan 07 04:07:34 2020
 Response via : Initial Calibration
 Integrator: ChemStation 6890 Scale Mode: Large solvent peaks clipped

Volume Inj. : 1 µl
 Signal Phase : Rxi-1ms
 Signal Info : 20M x 0.18mm x 0.18µm

Compound	R.T.	Response	Conc Units

System Monitoring Compounds			
4) S 2-Bromonaphthalene (S...	7.634	4415070	39.275 ug/ml
Spiked Amount 50.000		Recovery =	78.55%
6) S 2-Fluorobiphenyl (SURR)	8.496	2984545	38.291 ug/ml
Spiked Amount 50.000 Range 0 - 131		Recovery =	76.58%
11) S ortho-Terphenyl (SURR)	11.532	2884630	23.241 ug/ml
Spiked Amount 50.000		Recovery =	46.48%

Target Compounds

(f)=RT Delta > 1/2 Window

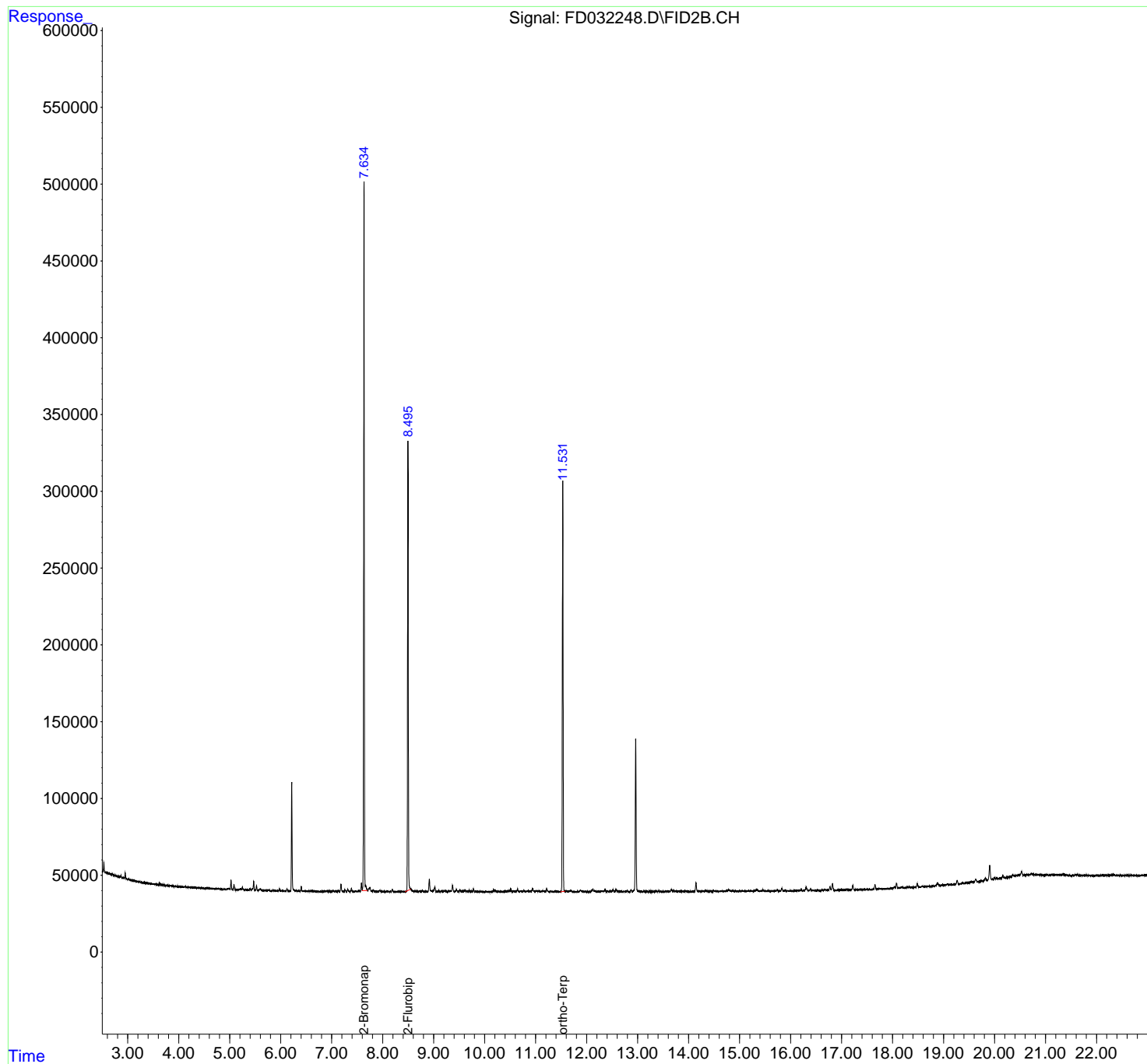
(m)=manual int.

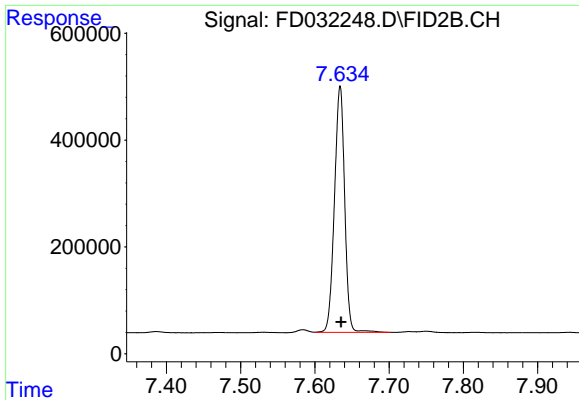
Data Path : Z:\pestpcbsrv\HPCHEM1\FID_D\Data\FD013120AR\
Data File : FD032248.D
Signal(s) : FID2B.CH
Acq On : 31 Jan 2020 19:02
Operator : DD\AJ
Sample : L1325-05
Misc :
ALS Vial : 66 Sample Multiplier: 1

Instrument :
FID_D
ClientSampled :

Integration File: autoint1.e
Quant Time: Feb 01 00:46:02 2020
Quant Method : Z:\pestpcbsrv\HPCHEM1\FID_D\methods\Aromatic EPH 010620.M
Quant Title : GC Extractables
QLast Update : Tue Jan 07 04:07:34 2020
Response via : Initial Calibration
Integrator: ChemStation 6890 Scale Mode: Large solvent peaks clipped

Volume Inj. : 1 µl
Signal Phase : Rxi-1ms
Signal Info : 20M x 0.18mm x 0.18µm

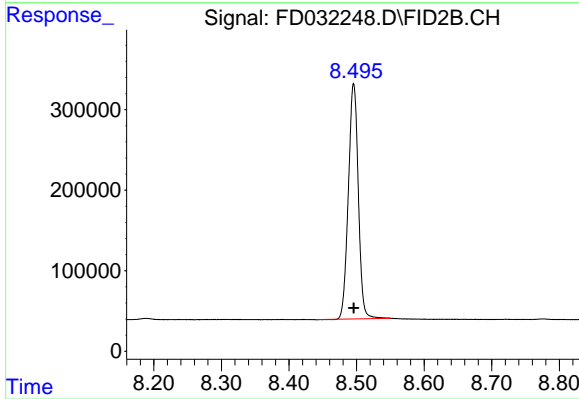




#4 2-Bromonaphthalene (SURR)

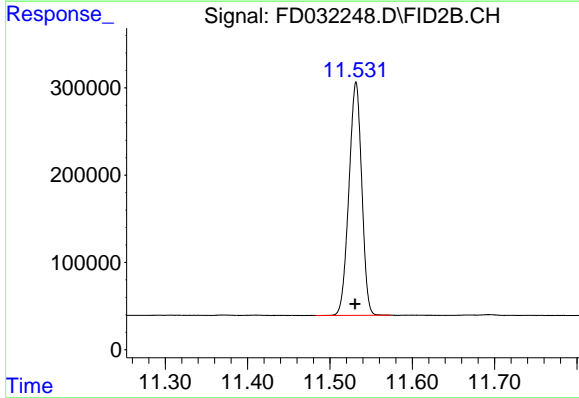
R.T.: 7.634 min
Delta R.T.: -0.001 min
Response: 4415070
Conc: 39.28 ug/ml

Instrument :
FID_D
ClientSampleId :



#6 2-Fluorobiphenyl (SURR)

R.T.: 8.496 min
Delta R.T.: 0.000 min
Response: 2984545
Conc: 38.29 ug/ml



#11 ortho-Terphenyl (SURR)

R.T.: 11.532 min
Delta R.T.: 0.001 min
Response: 2884630
Conc: 23.24 ug/ml