

Data Path : Z:\pestpcbsrv\HPCHEM1\FID\_D\Data\FD020725AR\  
 Data File : FD049058.D  
 Signal(s) : FID2B.ch  
 Acq On : 07 Feb 2025 14:56  
 Operator : YP/AJ  
 Sample : Q1308-04MSD  
 Misc :  
 ALS Vial : 67 Sample Multiplier: 1

Instrument :  
 FID\_D  
 ClientSampleId :  
 EX-11-TPH-5MSD

Integration File: autoint1.e  
 Quant Time: Feb 07 23:59:06 2025  
 Quant Method : Z:\pestpcbsrv\HPCHEM1\FID\_D\methods\Aromatic EPH 012425.M  
 Quant Title : GC Extractables  
 QLast Update : Sat Jan 25 03:38:15 2025  
 Response via : Initial Calibration  
 Integrator: ChemStation

Volume Inj. : 1 µl  
 Signal Phase : Rxi-1ms  
 Signal Info : 20M x 0.18mm x 0.18µm

Compound	R.T.	Response	Conc Units
-----			
System Monitoring Compounds			
4) S 2-Bromonaphthalene (S...	7.354	7298949	51.285 ug/ml
Spiked Amount 50.000		Recovery =	102.57%
6) S 2-Fluorobiphenyl (SURR)	8.203	4233208	49.751 ug/ml
Spiked Amount 50.000 Range 0 - 131		Recovery =	99.50%
11) S ortho-Terphenyl (SURR)	11.237	5321700	32.360 ug/ml
Spiked Amount 50.000		Recovery =	64.72%
Target Compounds			
1) T 1,2,3-Trimethylbenzen...	4.176	4155174	26.956 ug/ml
2) T Naphthalene (C11.7)	5.693	4952790	31.685 ug/ml
3) T 2-Methylnaphthalene (...)	6.740	5009545	32.293 ug/ml
5) T Acenaphthylene (C15.06)	8.005	5950921	36.388 ug/ml
7) T Acenaphthene (C15.5)	8.300	6234009	37.115 ug/ml
8) T Fluorene (C16.55)	9.079	6289638	40.207 ug/ml
9) T Phenanthrene (C19.36)	10.466	6213232	40.796 ug/ml
10) T Anthracene (C19.43)	10.542	6235614	40.936 ug/ml
12) T Fluoranthene (C21.85)	12.270	6303954	40.077 ug/ml
13) T Pyrene (C20.8)	12.563	6148379	39.029 ug/ml
14) T Benzo[a]anthracene (C...	14.434	5854766	45.499 ug/ml
15) T Chrysene (C27.41)	14.477	5855949	34.631 ug/ml
16) T benzo[b]fluoranthene ...	15.983	5828104	42.655 ug/ml
17) T Bnezo[k]fluoranthene ...	16.017	5902422	36.444 ug/ml
18) T Benzo[a]pyrene (C31.34)	16.359	5682708	40.830 ug/ml
19) T Indeno[1,2,3-cd]pyren...	17.727	5594393	53.642 ug/ml
20) T Dibenz[a,h]anthracene...	17.763	5849466	40.975 ug/ml
21) T Benzo[g,h,i]perylene ...	17.978	5619561	39.397 ug/ml

(f)=RT Delta > 1/2 Window

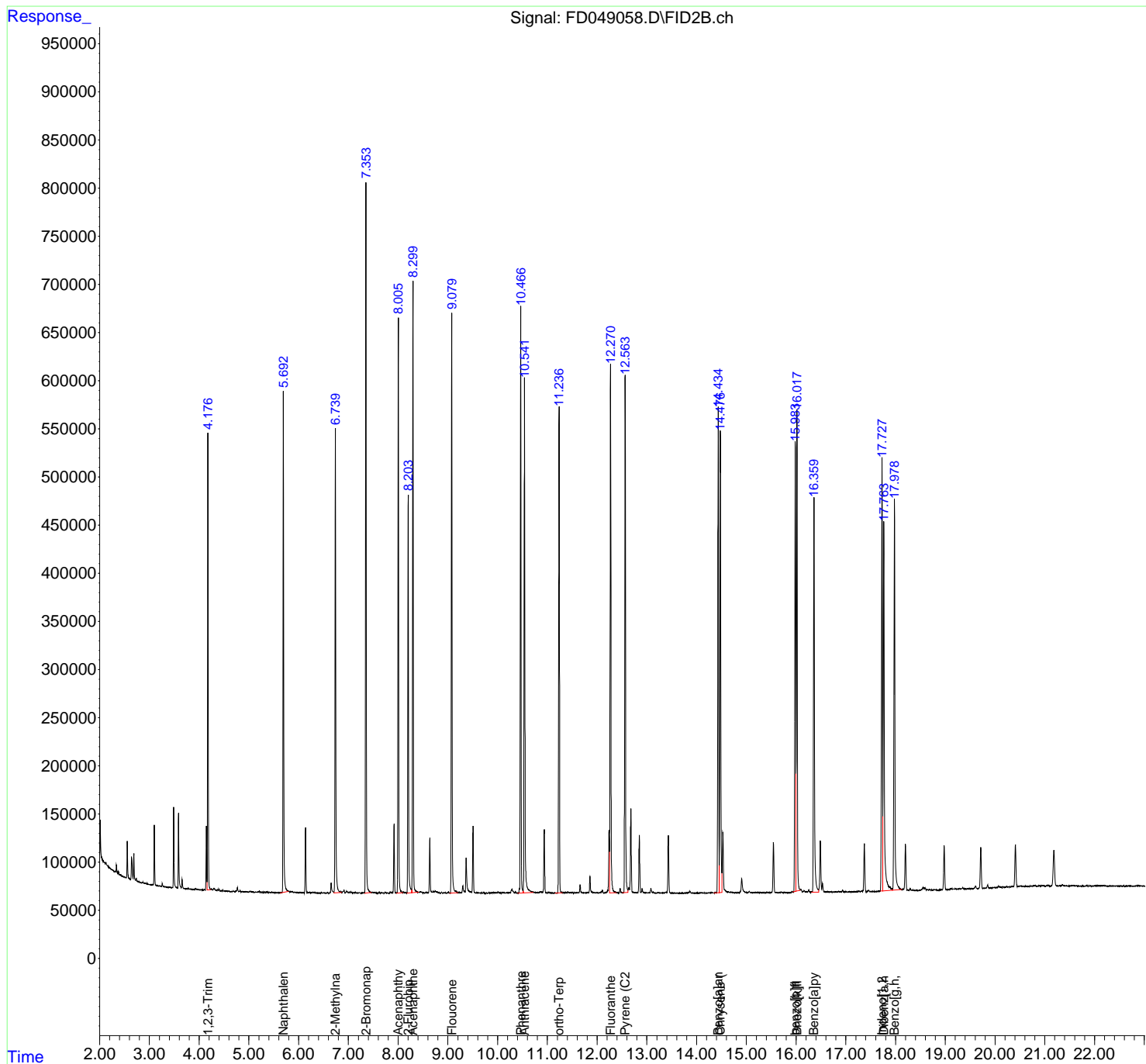
(m)=manual int.

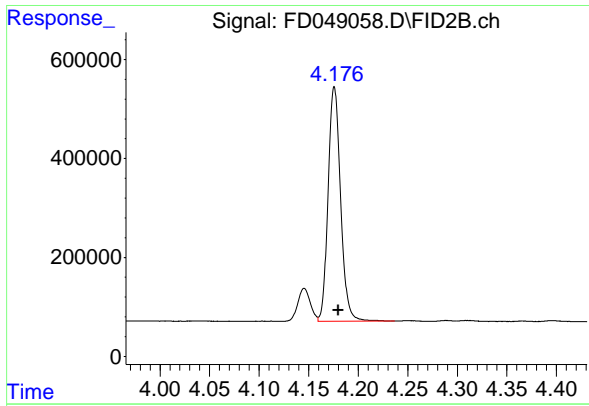
Data Path : Z:\pestpcbsrv\HPCHEM1\FID\_D\Data\FD020725AR\  
 Data File : FD049058.D  
 Signal(s) : FID2B.ch  
 Acq On : 07 Feb 2025 14:56  
 Operator : YP/AJ  
 Sample : Q1308-04MSD  
 Misc :  
 ALS Vial : 67 Sample Multiplier: 1

Instrument :  
 FID\_D  
 ClientSampleId :  
 EX-11-TPH-5MSD

Integration File: autoint1.e  
 Quant Time: Feb 07 23:59:06 2025  
 Quant Method : Z:\pestpcbsrv\HPCHEM1\FID\_D\methods\Aromatic EPH 012425.M  
 Quant Title : GC Extractables  
 QLast Update : Sat Jan 25 03:38:15 2025  
 Response via : Initial Calibration  
 Integrator: ChemStation

Volume Inj. : 1 µl  
 Signal Phase : Rxi-1ms  
 Signal Info : 20M x 0.18mm x 0.18µm

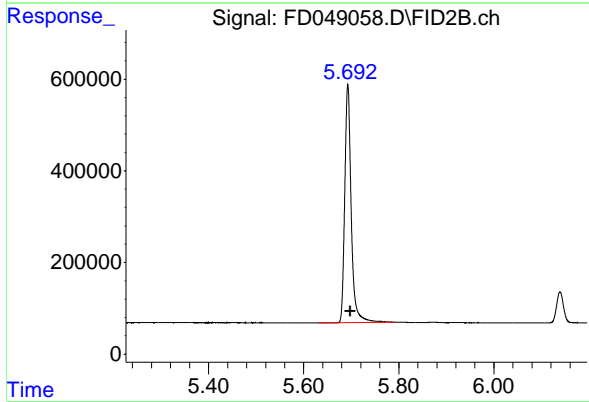




#1 1,2,3-Trimethylbenzene (C10.1)

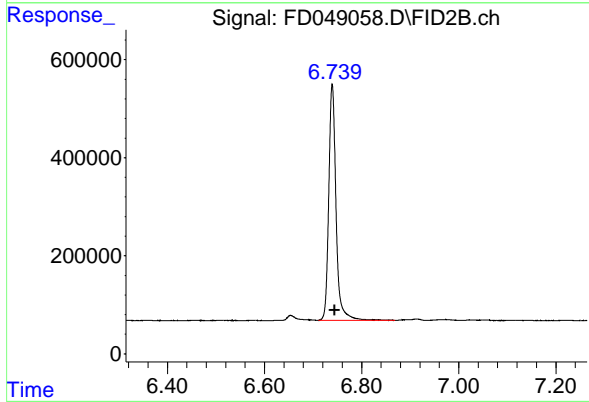
R.T.: 4.176 min  
Delta R.T.: -0.004 min  
Response: 4155174  
Conc: 26.96 ug/ml

Instrument :  
FID\_D  
ClientSampleId :  
EX-11-TPH-5MSD



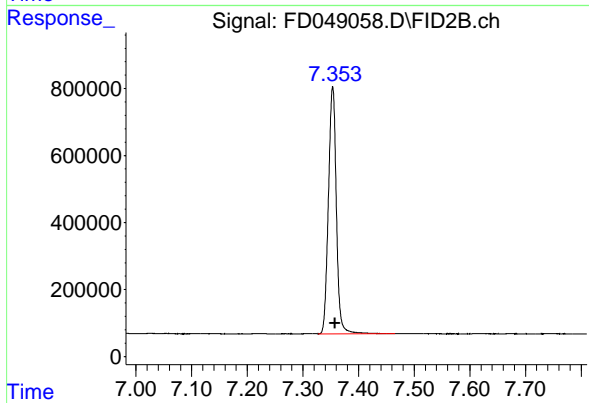
#2 Naphthalene (C11.7)

R.T.: 5.693 min  
Delta R.T.: -0.006 min  
Response: 4952790  
Conc: 31.68 ug/ml



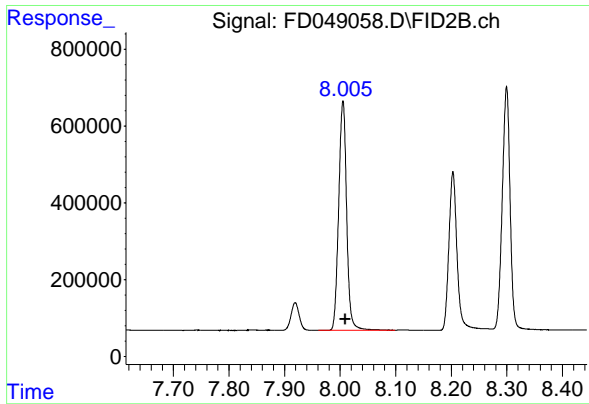
#3 2-Methylnaphthalene (C12.89)

R.T.: 6.740 min  
Delta R.T.: -0.005 min  
Response: 5009545  
Conc: 32.29 ug/ml



#4 2-Bromonaphthalene (SURR)

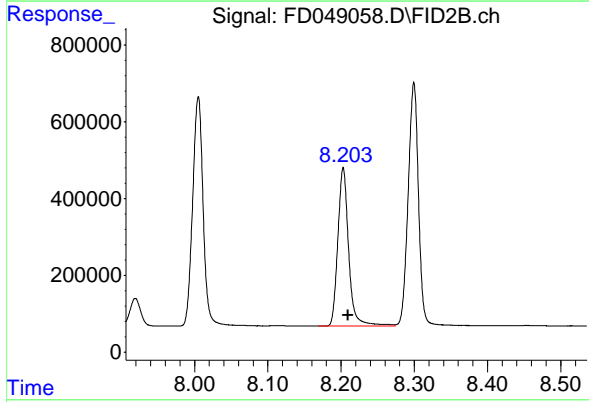
R.T.: 7.354 min  
Delta R.T.: -0.004 min  
Response: 7298949  
Conc: 51.28 ug/ml



#5 Acenaphthylene (C15.06)

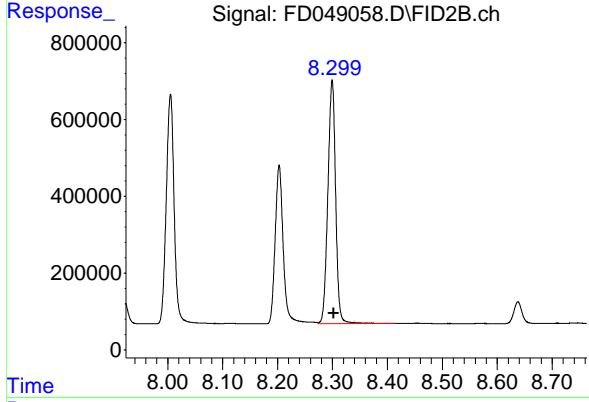
R.T.: 8.005 min  
 Delta R.T.: -0.004 min  
 Response: 5950921  
 Conc: 36.39 ug/ml

Instrument :  
 FID\_D  
 ClientSampleId :  
 EX-11-TPH-5MSD



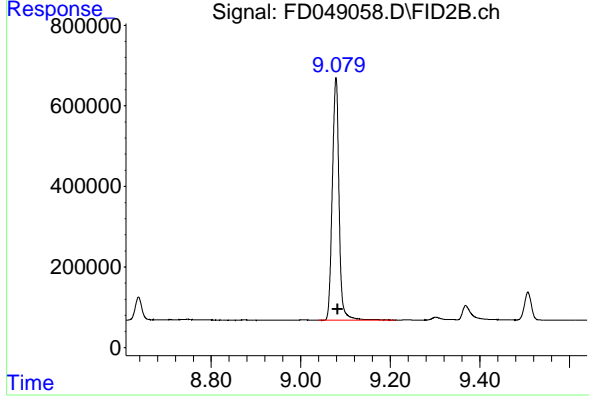
#6 2-Fluorobiphenyl (SURR)

R.T.: 8.203 min  
 Delta R.T.: -0.006 min  
 Response: 4233208  
 Conc: 49.75 ug/ml



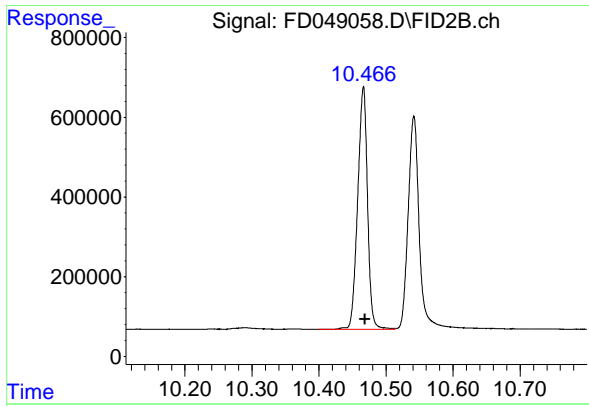
#7 Acenaphthene (C15.5)

R.T.: 8.300 min  
 Delta R.T.: -0.003 min  
 Response: 6234009  
 Conc: 37.12 ug/ml



#8 Fluorene (C16.55)

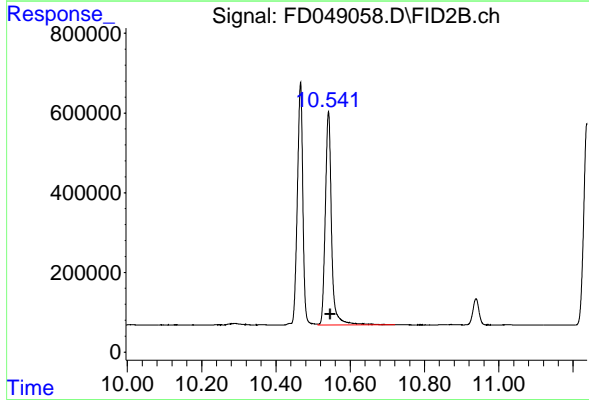
R.T.: 9.079 min  
 Delta R.T.: -0.004 min  
 Response: 6289638  
 Conc: 40.21 ug/ml



#9 Phenanthrene (C19.36)

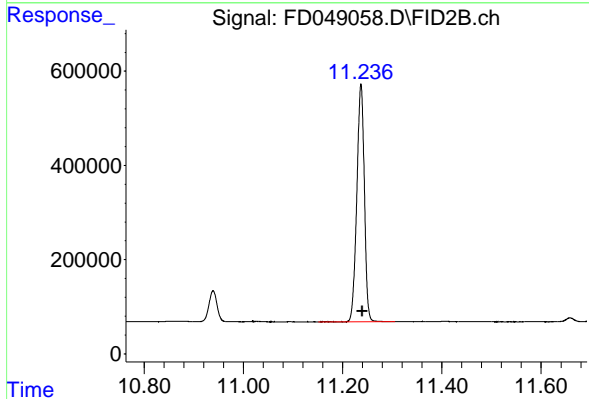
R.T.: 10.466 min  
 Delta R.T.: -0.002 min  
 Response: 6213232  
 Conc: 40.80 ug/ml

Instrument : FID\_D  
 ClientSampleId : EX-11-TPH-5MSD



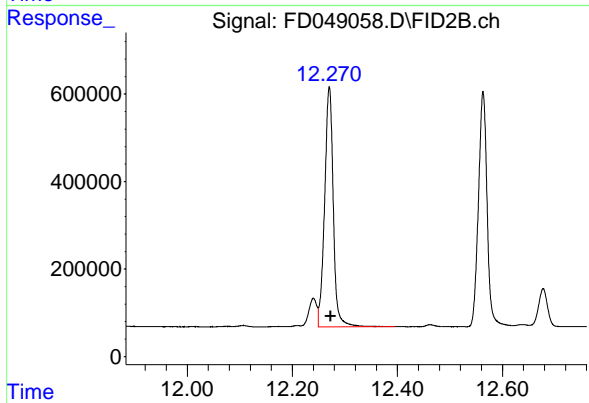
#10 Anthracene (C19.43)

R.T.: 10.542 min  
 Delta R.T.: -0.004 min  
 Response: 6235614  
 Conc: 40.94 ug/ml



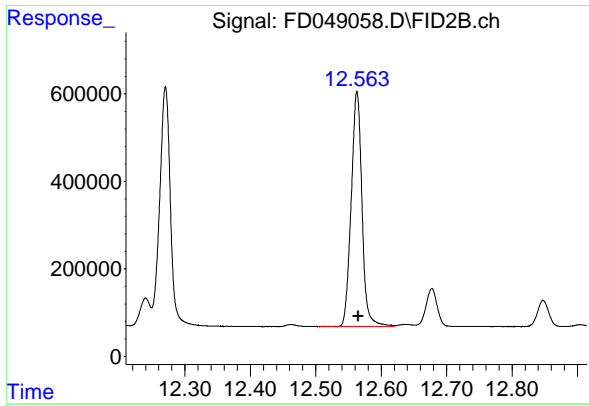
#11 ortho-Terphenyl (SURR)

R.T.: 11.237 min  
 Delta R.T.: -0.002 min  
 Response: 5321700  
 Conc: 32.36 ug/ml



#12 Fluoranthene (C21.85)

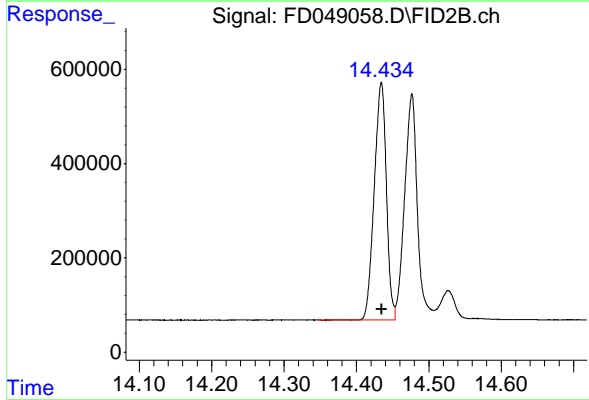
R.T.: 12.270 min  
 Delta R.T.: -0.003 min  
 Response: 6303954  
 Conc: 40.08 ug/ml



#13 Pyrene (C20.8)

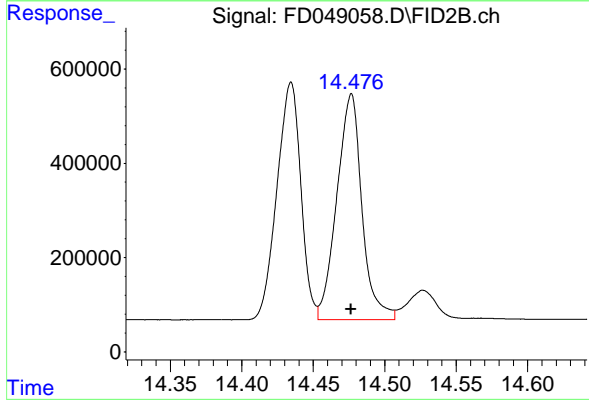
R.T.: 12.563 min  
 Delta R.T.: -0.002 min  
 Response: 6148379  
 Conc: 39.03 ug/ml

Instrument :  
 FID\_D  
 ClientSampleId :  
 EX-11-TPH-5MSD



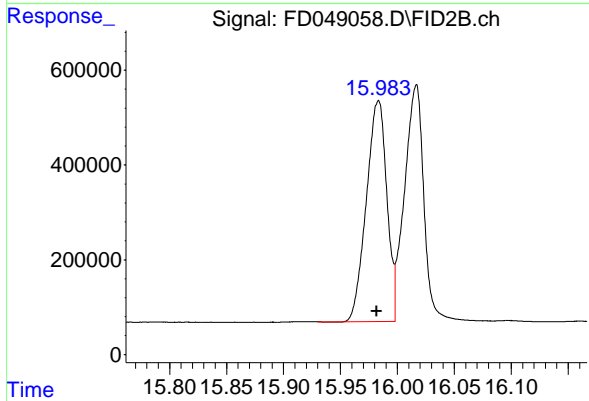
#14 Benzo[a]anthracene (C26.37)

R.T.: 14.434 min  
 Delta R.T.: 0.000 min  
 Response: 5854766  
 Conc: 45.50 ug/ml



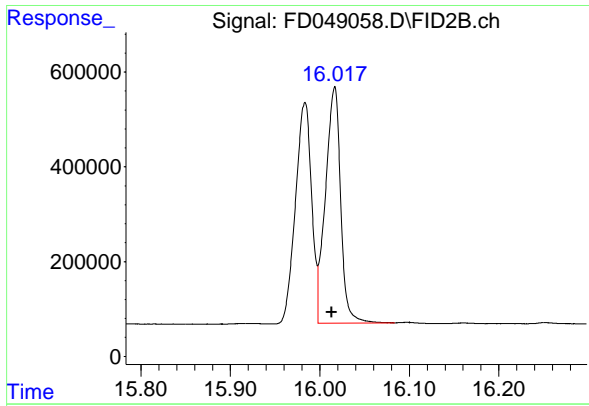
#15 Chrysene (C27.41)

R.T.: 14.477 min  
 Delta R.T.: 0.000 min  
 Response: 5855949  
 Conc: 34.63 ug/ml



#16 benzo[b]fluoranthene (C30.41)

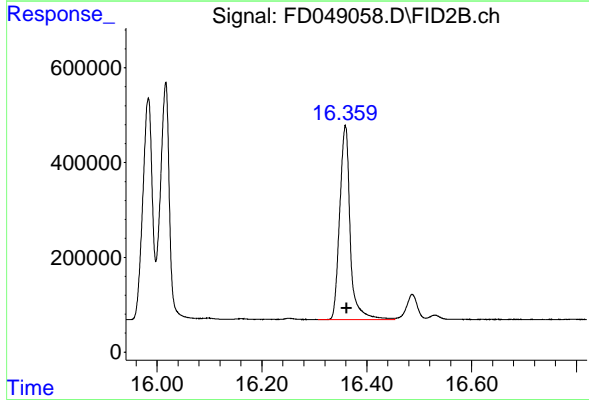
R.T.: 15.983 min  
 Delta R.T.: 0.002 min  
 Response: 5828104  
 Conc: 42.66 ug/ml



#17 Bnezo[k]fluoranthene (C30.14)

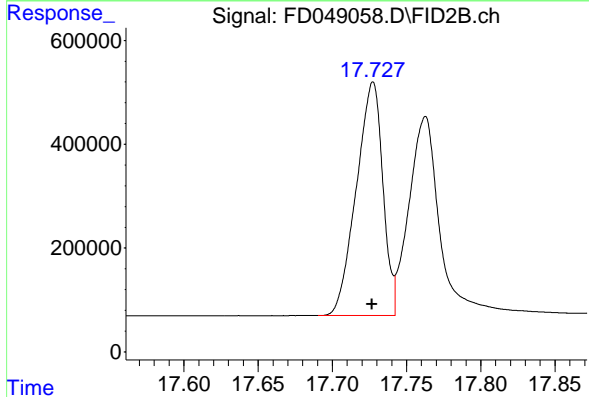
R.T.: 16.017 min  
Delta R.T.: 0.004 min  
Response: 5902422  
Conc: 36.44 ug/ml

Instrument : FID\_D  
ClientSampleId : EX-11-TPH-5MSD



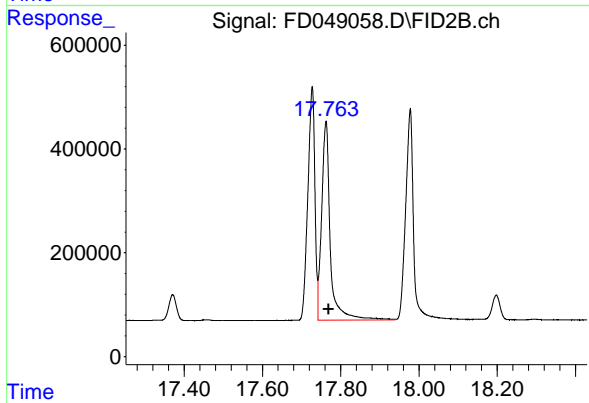
#18 Benzo[a]pyrene (C31.34)

R.T.: 16.359 min  
Delta R.T.: -0.002 min  
Response: 5682708  
Conc: 40.83 ug/ml



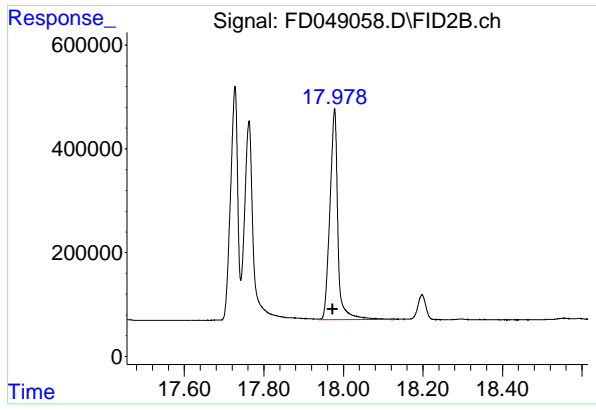
#19 Indeno[1,2,3-cd]pyrene (C35.01)

R.T.: 17.727 min  
Delta R.T.: 0.000 min  
Response: 5594393  
Conc: 53.64 ug/ml



#20 Dibenz[a,h]anthracene (C30.36)

R.T.: 17.763 min  
Delta R.T.: -0.006 min  
Response: 5849466  
Conc: 40.98 ug/ml



#21 Benzo[g,h,i]perylene (C34.01)

R.T.: 17.978 min

Delta R.T.: 0.005 min

Response: 5619561

Conc: 39.40 ug/ml

Instrument :

FID\_D

ClientSampleId :

EX-11-TPH-5MSD