

Data Path : Z:\pestpcbsrv\HPCHEM1\FID_D\Data\FD020824AL\
 Data File : FD047217.D
 Signal(s) : FID2B.ch
 Acq On : 09 Feb 2024 04:00
 Operator : YP/AJ
 Sample : PB158548BL
 Misc :
 ALS Vial : 66 Sample Multiplier: 1

Instrument :
 FID_D
 ClientSampleId :

Integration File: autoint1.e
 Quant Time: Feb 09 05:37:14 2024
 Quant Method : Z:\pestpcbsrv\HPCHEM1\FID_D\methods\Aliphatic EPH 020824.M
 Quant Title : GC Extractables
 QLast Update : Fri Feb 09 05:31:04 2024
 Response via : Initial Calibration
 Integrator: ChemStation

Volume Inj. : 1 ul
 Signal Phase : Rxi-1ms
 Signal Info : 20M x 0.18mm x 0.18um

Compound	R.T.	Response	Conc Units

System Monitoring Compounds			
9) S ortho-Terphenyl (SURR)	11.355	242451	1.342 ug/ml
Spiked Amount	50.000	Recovery	= 2.68%
12) S 1-chlorooctadecane (S...	12.794	5492347	39.683 ug/ml
Spiked Amount	50.000	Recovery	= 79.37%
Target Compounds			
4) T n-Dodecane (C12)	6.248	178935	1.103 ug/ml
6) T n-Tetradecane (C14)	8.032	49971	0.309 ug/ml
18) T n-Dotriacontane (C32)	18.299	47564	0.337 ug/ml

(f)=RT Delta > 1/2 Window

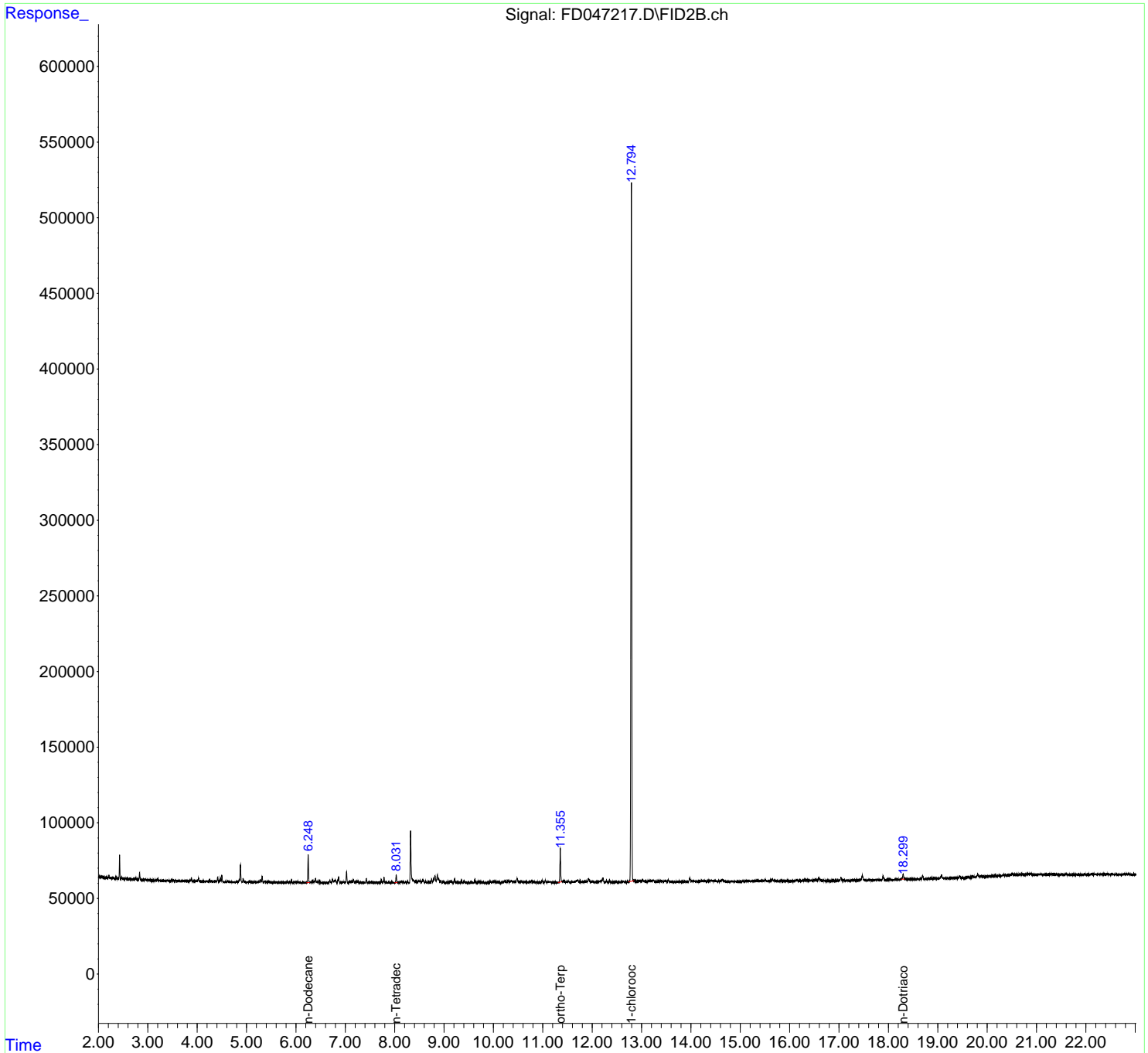
(m)=manual int.

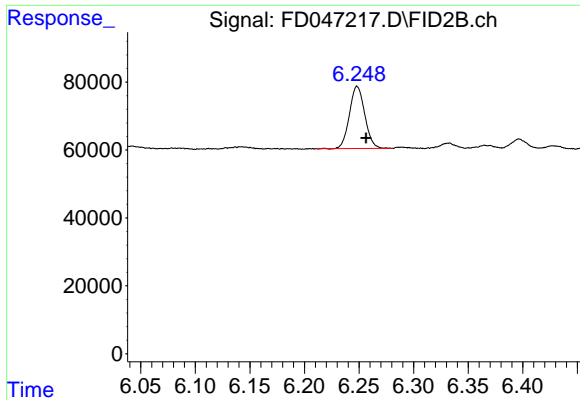
Data Path : Z:\pestpcbsrv\HPCHEM1\FID_D\Data\FD020824AL\
 Data File : FD047217.D
 Signal(s) : FID2B.ch
 Acq On : 09 Feb 2024 04:00
 Operator : YP/AJ
 Sample : PB158548BL
 Misc :
 ALS Vial : 66 Sample Multiplier: 1

Instrument :
 FID_D
 ClientSampleId :

Integration File: autoint1.e
 Quant Time: Feb 09 05:37:14 2024
 Quant Method : Z:\pestpcbsrv\HPCHEM1\FID_D\methods\Aliphatic EPH 020824.M
 Quant Title : GC Extractables
 QLast Update : Fri Feb 09 05:31:04 2024
 Response via : Initial Calibration
 Integrator: ChemStation

Volume Inj. : 1 ul
 Signal Phase : Rxi-1ms
 Signal Info : 20M x 0.18mm x 0.18um

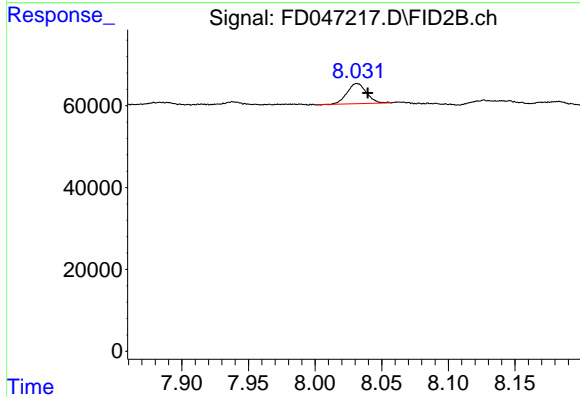




#4 n-Dodecane (C12)

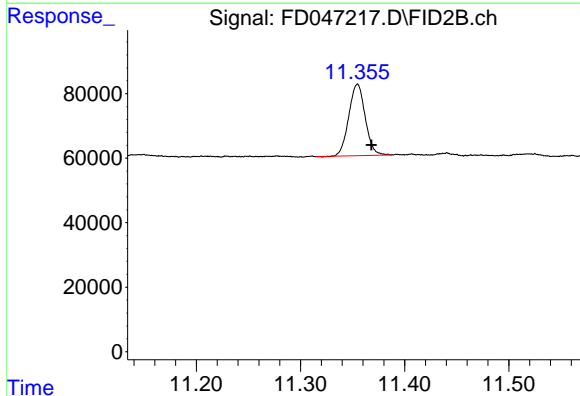
R.T.: 6.248 min
 Delta R.T.: -0.008 min
 Response: 178935
 Conc: 1.10 ug/ml

Instrument :
 FID_D
 ClientSampleId :



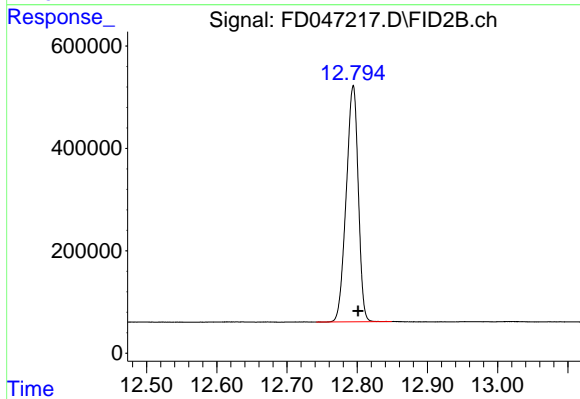
#6 n-Tetradecane (C14)

R.T.: 8.032 min
 Delta R.T.: -0.008 min
 Response: 49971
 Conc: 0.31 ug/ml



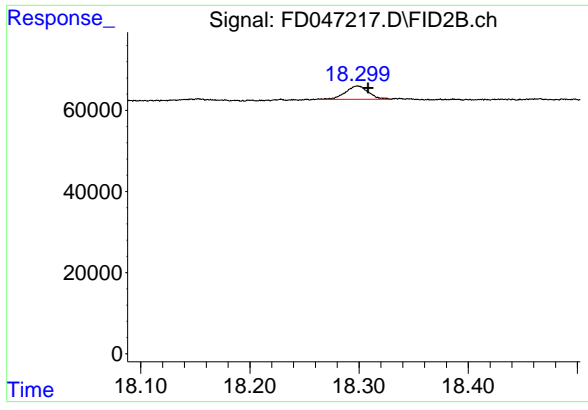
#9 ortho-Terphenyl (SURR)

R.T.: 11.355 min
 Delta R.T.: -0.013 min
 Response: 242451
 Conc: 1.34 ug/ml



#12 1-chlorooctadecane (SURR)

R.T.: 12.794 min
 Delta R.T.: -0.007 min
 Response: 5492347
 Conc: 39.68 ug/ml



#18 n-Dotriacontane (C32)

R.T.: 18.299 min
Delta R.T.: -0.010 min
Response: 47564
Conc: 0.34 ug/ml

Instrument : FID_D
ClientSampleId :