

Data Path : Z:\pestpcbsrv\HPCHEM1\FID\_D\Data\FD021119AR\  
 Data File : FD027663.D  
 Signal(s) : FID2B.CH  
 Acq On : 11 Feb 2019 23:06  
 Operator : AJ\SJ  
 Sample : K1453-13  
 Misc :  
 ALS Vial : 64 Sample Multiplier: 1

Integration File: autoint1.e  
 Quant Time: Feb 12 01:22:54 2019  
 Quant Method : Z:\pestpcbsrv\HPCHEM1\FID\_D\methods\Aromatic EPH 020419.M  
 Quant Title : GC Extractables  
 QLast Update : Tue Feb 05 01:03:41 2019  
 Response via : Initial Calibration  
 Integrator: ChemStation 6890 Scale Mode: Large solvent peaks clipped

Volume Inj. : 1 µl  
 Signal Phase : Rxi-1ms  
 Signal Info : 20M x 0.18mm x 0.18µm

Compound	R.T.	Response	Conc Units
-----			
System Monitoring Compounds			
4) S 2-Bromonaphthalene (S...	7.342	4988584	67.196 ug/ml
Spiked Amount 50.000		Recovery =	134.39%
6) S 2-Fluorobiphenyl (SURR)	8.191	3442782	67.667 ug/ml
Spiked Amount 50.000 Range 0 - 131		Recovery =	135.33%#
11) S ortho-Terphenyl (SURR)	11.228	3857133	43.512 ug/ml
Spiked Amount 50.000		Recovery =	87.02%

Target Compounds  
 -----

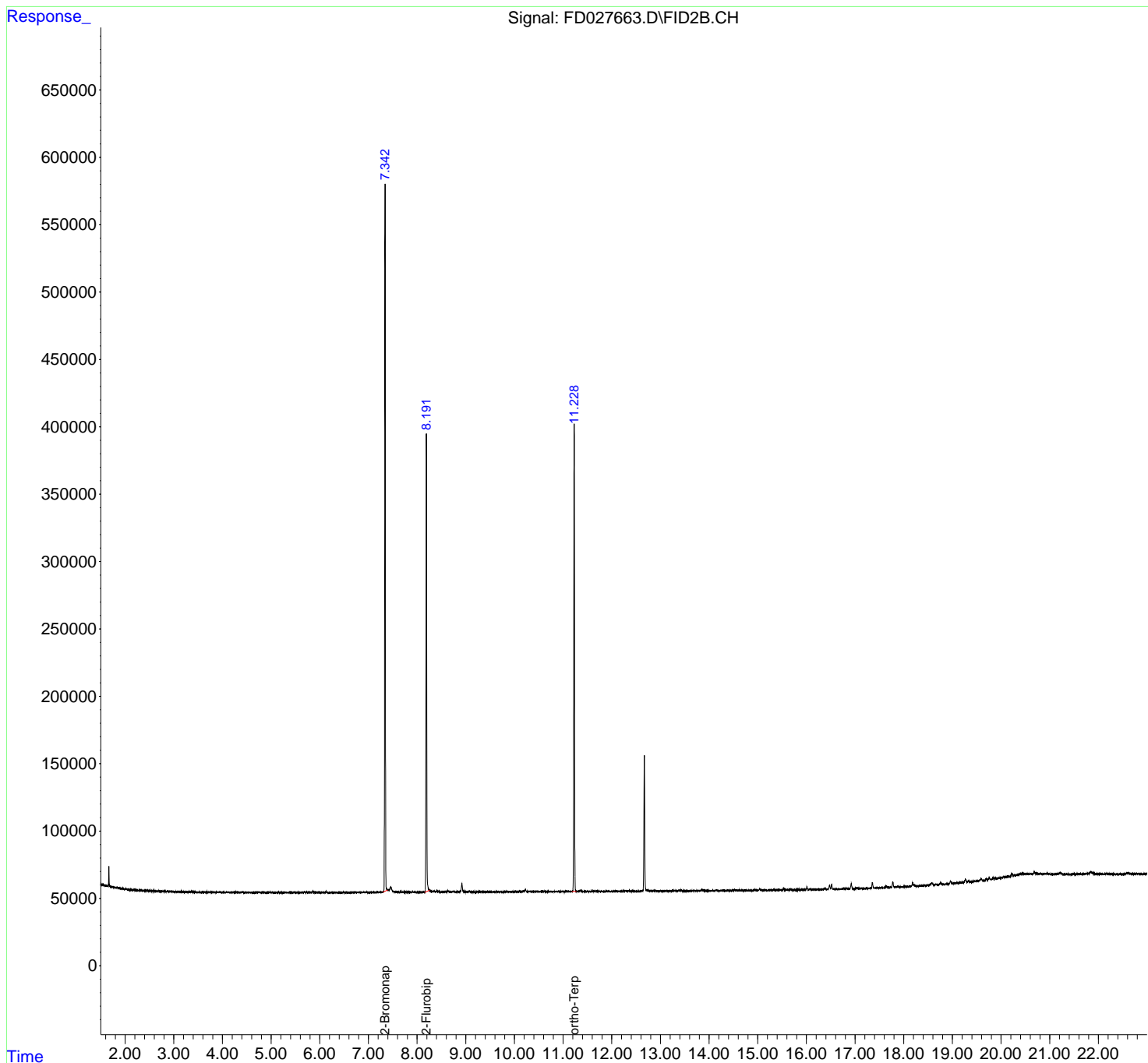
(f)=RT Delta > 1/2 Window

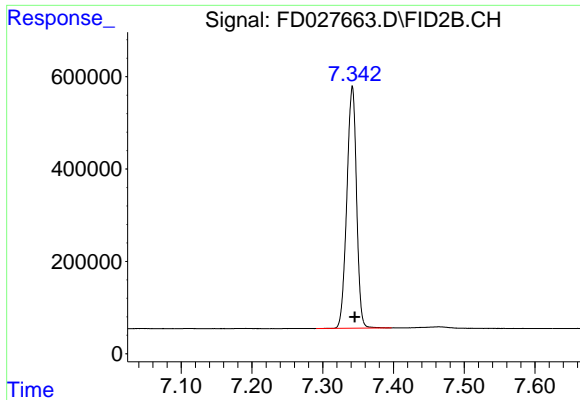
(m)=manual int.

Data Path : Z:\pestpcbsrv\HPCHEM1\FID\_D\Data\FD021119AR\  
Data File : FD027663.D  
Signal(s) : FID2B.CH  
Acq On : 11 Feb 2019 23:06  
Operator : AJ\SJ  
Sample : K1453-13  
Misc :  
ALS Vial : 64 Sample Multiplier: 1

Integration File: autoint1.e  
Quant Time: Feb 12 01:22:54 2019  
Quant Method : Z:\pestpcbsrv\HPCHEM1\FID\_D\methods\Aromatic EPH 020419.M  
Quant Title : GC Extractables  
QLast Update : Tue Feb 05 01:03:41 2019  
Response via : Initial Calibration  
Integrator: ChemStation 6890 Scale Mode: Large solvent peaks clipped

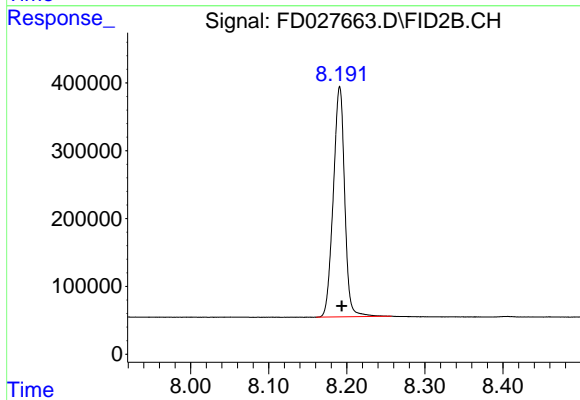
Volume Inj. : 1 µl  
Signal Phase : Rxi-1ms  
Signal Info : 20M x 0.18mm x 0.18µm





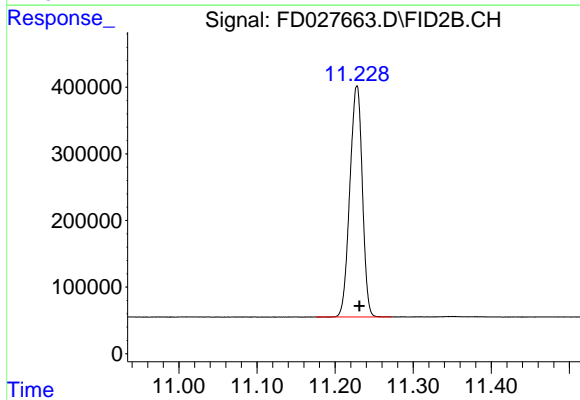
#4 2-Bromonaphthalene (SURR)

R.T.: 7.342 min  
Delta R.T.: -0.003 min  
Response: 4988584  
Conc: 67.20 ug/ml



#6 2-Fluorobiphenyl (SURR)

R.T.: 8.191 min  
Delta R.T.: -0.003 min  
Response: 3442782  
Conc: 67.67 ug/ml



#11 ortho-Terphenyl (SURR)

R.T.: 11.228 min  
Delta R.T.: -0.003 min  
Response: 3857133  
Conc: 43.51 ug/ml