

Data Path : Z:\pestpcbsrv\HPCHEM1\FID\_D\Data\FD021519AR\  
 Data File : FD027771.D  
 Signal(s) : FID2B.CH  
 Acq On : 15 Feb 2019 10:51  
 Operator : AJ\SJ  
 Sample : 20 PPM AROMATIC HC STD  
 Misc :  
 ALS Vial : 52 Sample Multiplier: 1

Integration File: autoint1.e  
 Quant Time: Feb 16 00:20:38 2019  
 Quant Method : Z:\pestpcbsrv\HPCHEM1\FID\_D\methods\Aromatic EPH 020419.M  
 Quant Title : GC Extractables  
 QLast Update : Tue Feb 05 01:03:41 2019  
 Response via : Initial Calibration  
 Integrator: ChemStation 6890 Scale Mode: Large solvent peaks clipped

Volume Inj. : 1 µl  
 Signal Phase : Rxi-1ms  
 Signal Info : 20M x 0.18mm x 0.18µm

Compound	R.T.	Response	Conc Units
System Monitoring Compounds			
4) S 2-Bromonaphthalene (S...	7.336	1714565	23.095 ug/ml
Spiked Amount 50.000		Recovery =	46.19%
6) S 2-Fluorobiphenyl (SURR)	8.184	1130719	22.224 ug/ml
Spiked Amount 50.000 Range 0 - 131		Recovery =	44.45%
11) S ortho-Terphenyl (SURR)	11.221	1874102	21.142 ug/mlm
Spiked Amount 50.000		Recovery =	42.28%
Target Compounds			
1) T 1,2,3-Trimethylbenzen...	4.145	1766200	22.347 ug/ml
2) T Naphthalene (C11.7)	5.672	1966975	23.109 ug/mlm
3) T 2-Methylnaphthalene (...)	6.722	1956234	23.188 ug/ml
5) T Acenaphthylene (C15.06)	7.987	1855427	22.160 ug/ml
7) T Acenaphthene (C15.5)	8.282	1922434	21.871 ug/ml
8) T Fluorene (C16.55)	9.059	1870251	21.446 ug/mlm
9) T Phenanthrene (C19.36)	10.446	1781547	20.281 ug/mlm
10) T Anthracene (C19.43)	10.520	1849806	21.408 ug/mlm
12) T Fluoranthene (C21.85)	12.248	1866414	20.848 ug/ml
13) T Pyrene (C20.8)	12.540	1843177	20.772 ug/ml
14) T Benzo[a]anthracene (C...	14.407	1792409	20.046 ug/ml
15) T Chrysene (C27.41)	14.448	1918691	21.128 ug/ml
16) T benzo[b]fluoranthene ...	15.950	1909242	19.549 ug/mlm
17) T Bnezo[k]fluoranthene ...	15.981	1918395	19.402 ug/mlm
18) T Benzo[a]pyrene (C31.34)	16.324	1897366	19.405 ug/mlm
19) T Indeno[1,2,3-cd]pyren...	17.686	1759937	17.747 ug/mlm
20) T Dibenz[a,h]anthracene...	17.726	1805389	18.354 ug/mlm
21) T Benzo[g,h,i]perylene ...	17.935	1846076	18.209 ug/mlm

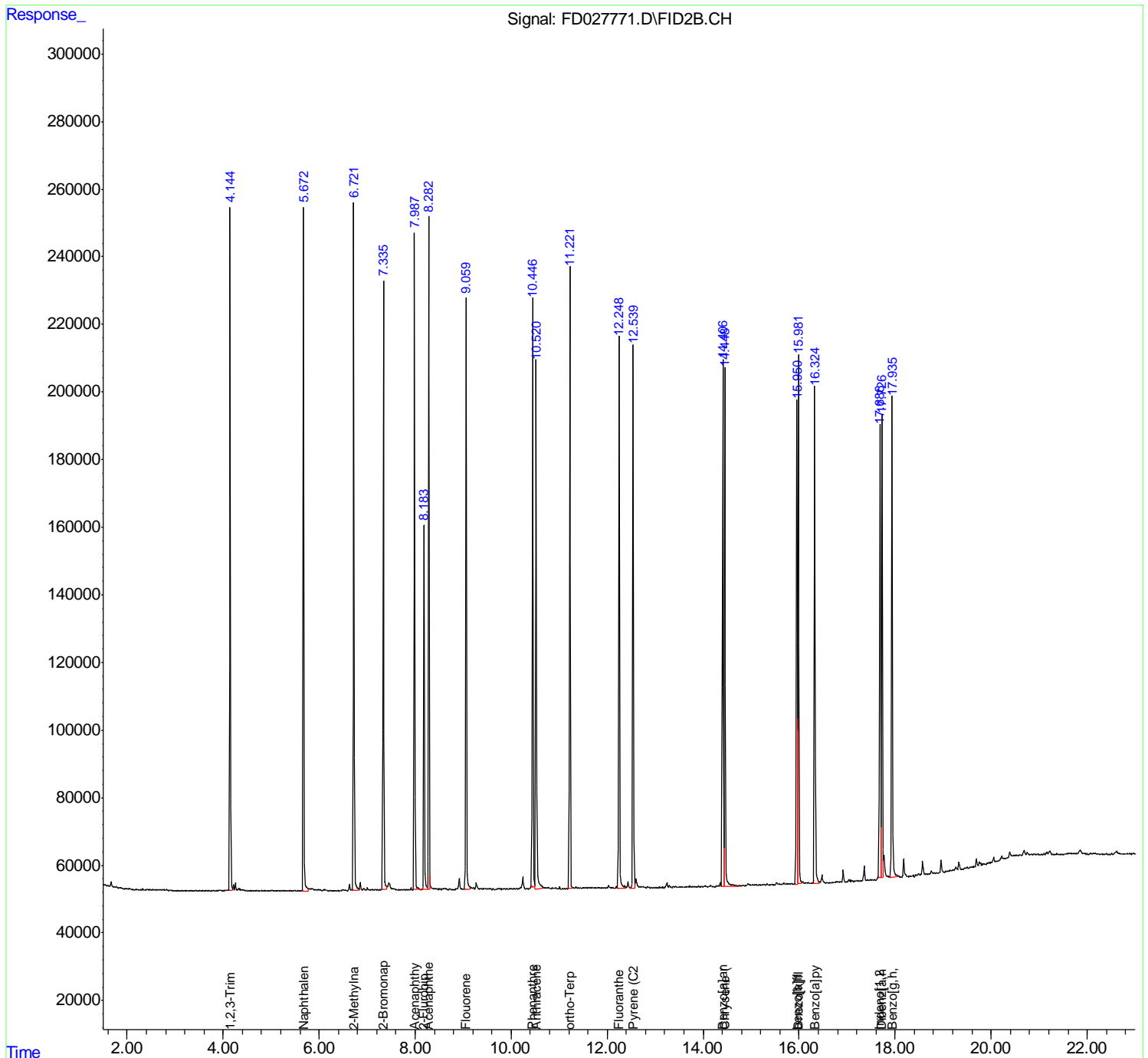
(f)=RT Delta > 1/2 Window

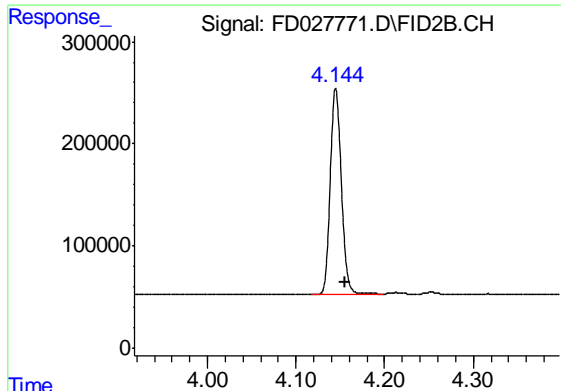
(m)=manual int.

Data Path : Z:\pestpcbsrv\HPCHEM1\FID\_D\Data\FD021519AR\  
Data File : FD027771.D  
Signal(s) : FID2B.CH  
Acq On : 15 Feb 2019 10:51  
Operator : AJ\SJ  
Sample : 20 PPM AROMATIC HC STD  
Misc :  
ALS Vial : 52 Sample Multiplier: 1

Integration File: autoint1.e  
Quant Time: Feb 16 00:20:38 2019  
Quant Method : Z:\pestpcbsrv\HPCHEM1\FID\_D\methods\Aromatic EPH 020419.M  
Quant Title : GC Extractables  
QLast Update : Tue Feb 05 01:03:41 2019  
Response via : Initial Calibration  
Integrator: ChemStation 6890 Scale Mode: Large solvent peaks clipped

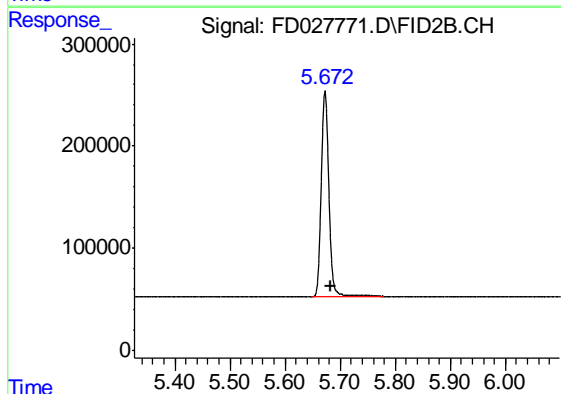
Volume Inj. : 1 µl  
Signal Phase : Rxi-1ms  
Signal Info : 20M x 0.18mm x 0.18µm





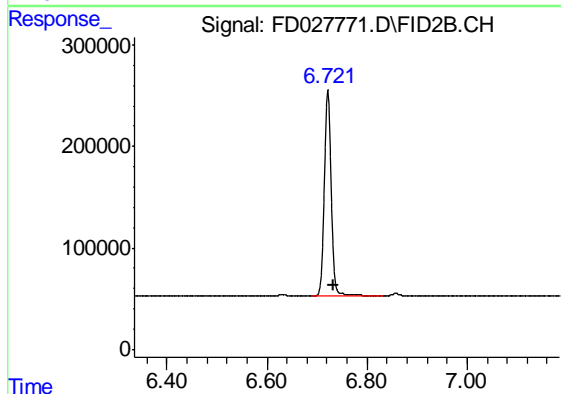
#1 1,2,3-Trimethylbenzene (C10.1)

R.T.: 4.145 min  
Delta R.T.: -0.010 min  
Response: 1766200  
Conc: 22.35 ug/ml



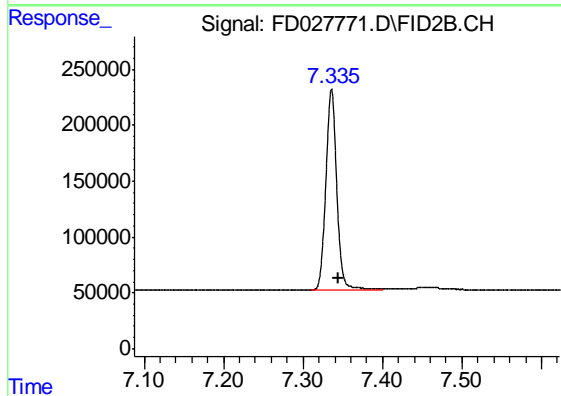
#2 Naphthalene (C11.7)

R.T.: 5.672 min  
Delta R.T.: -0.010 min  
Response: 1966975  
Conc: 23.11 ug/ml m



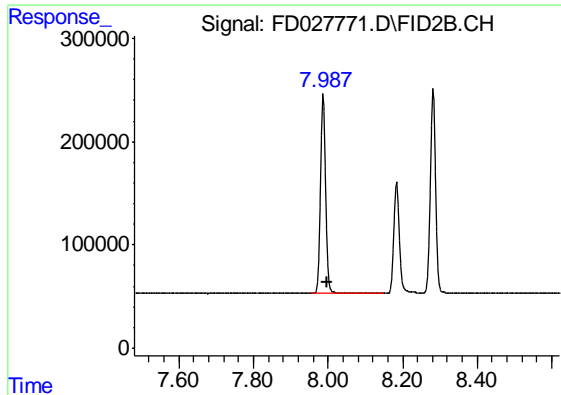
#3 2-Methylnaphthalene (C12.89)

R.T.: 6.722 min  
Delta R.T.: -0.010 min  
Response: 1956234  
Conc: 23.19 ug/ml

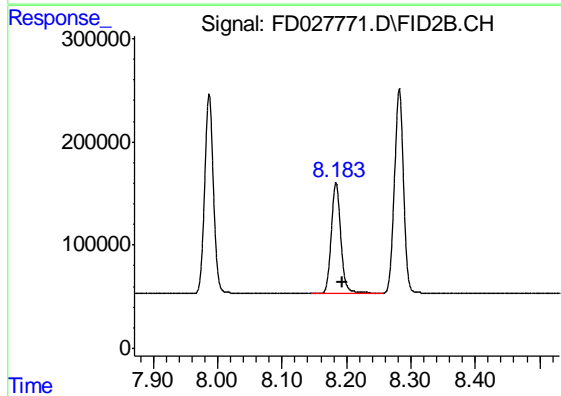


#4 2-Bromonaphthalene (SURR)

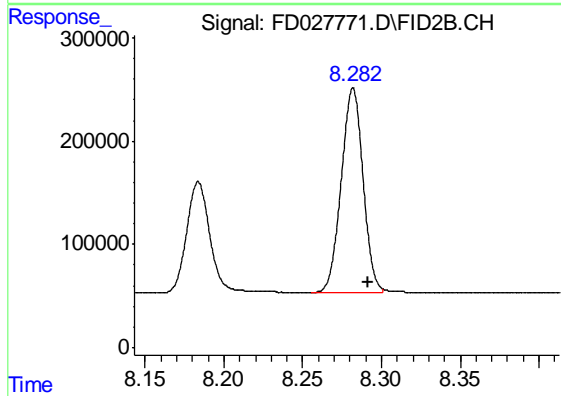
R.T.: 7.336 min  
Delta R.T.: -0.009 min  
Response: 1714565  
Conc: 23.09 ug/ml



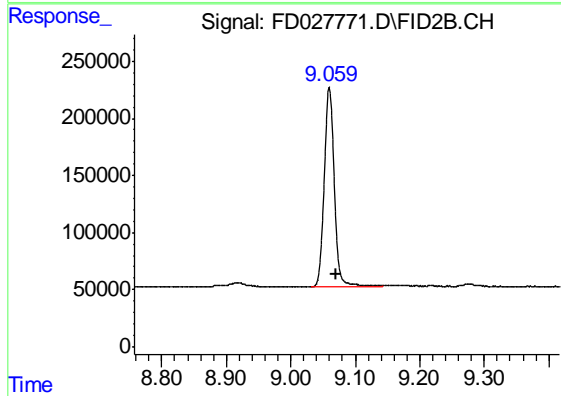
#5 Acenaphthylene (C15.06)  
 R.T.: 7.987 min  
 Delta R.T.: -0.010 min  
 Response: 1855427  
 Conc: 22.16 ug/ml



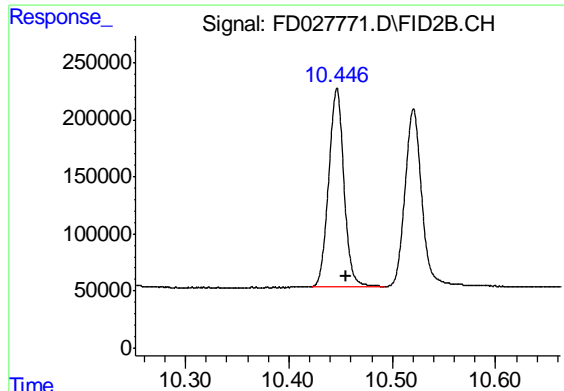
#6 2-Fluorobiphenyl (SURR)  
 R.T.: 8.184 min  
 Delta R.T.: -0.010 min  
 Response: 1130719  
 Conc: 22.22 ug/ml



#7 Acenaphthene (C15.5)  
 R.T.: 8.282 min  
 Delta R.T.: -0.010 min  
 Response: 1922434  
 Conc: 21.87 ug/ml



#8 Fluorene (C16.55)  
 R.T.: 9.059 min  
 Delta R.T.: -0.011 min  
 Response: 1870251  
 Conc: 21.45 ug/ml m



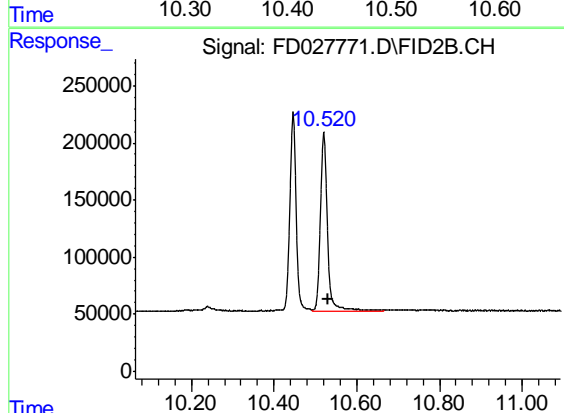
#9 Phenanthrene (C19.36)

R.T.: 10.446 min

Delta R.T.: -0.009 min

Response: 1781547

Conc: 20.28 ug/ml m



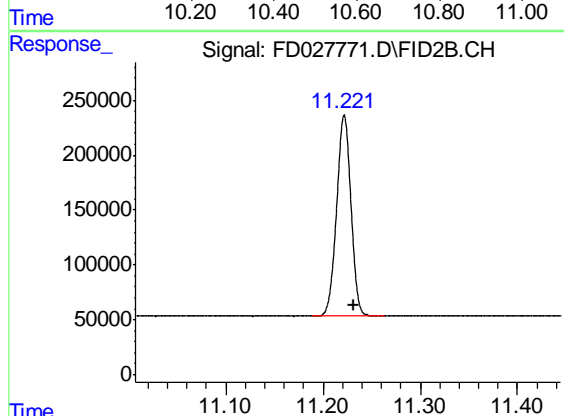
#10 Anthracene (C19.43)

R.T.: 10.520 min

Delta R.T.: -0.009 min

Response: 1849806

Conc: 21.41 ug/ml m



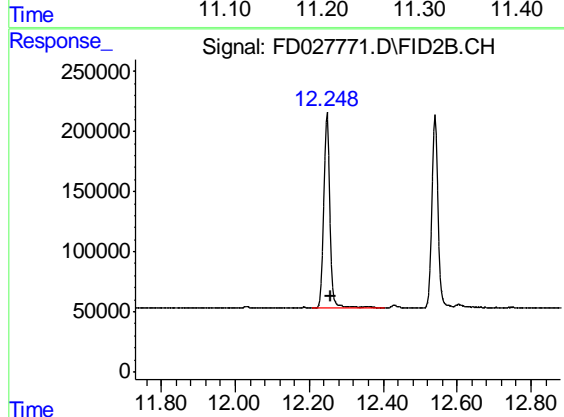
#11 ortho-Terphenyl (SURRE)

R.T.: 11.221 min

Delta R.T.: -0.010 min

Response: 1874102

Conc: 21.14 ug/ml m



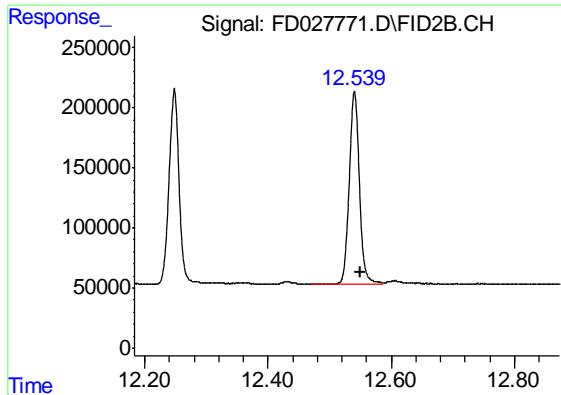
#12 Fluoranthene (C21.85)

R.T.: 12.248 min

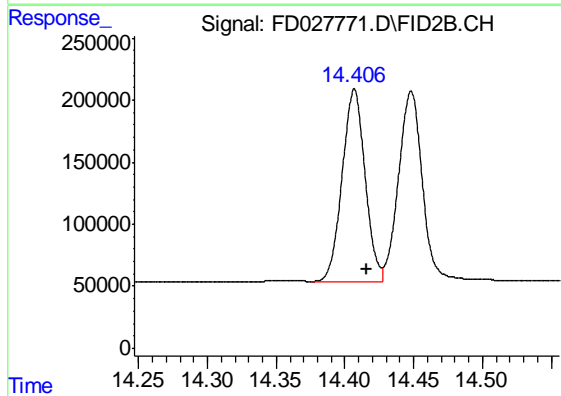
Delta R.T.: -0.009 min

Response: 1866414

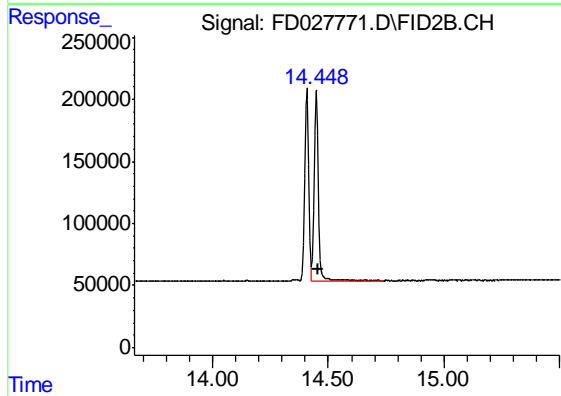
Conc: 20.85 ug/ml



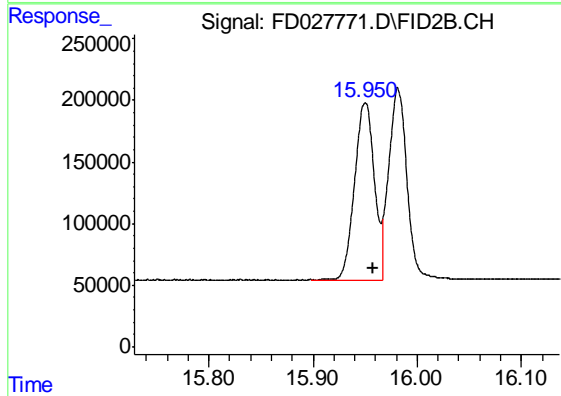
#13 Pyrene (C20.8)  
R.T.: 12.540 min  
Delta R.T.: -0.010 min  
Response: 1843177  
Conc: 20.77 ug/ml



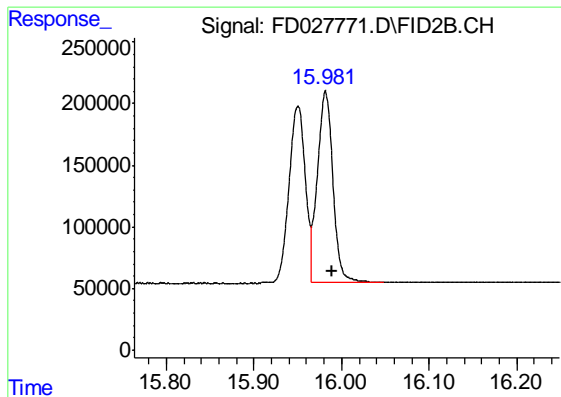
#14 Benzo[a]anthracene (C26.37)  
R.T.: 14.407 min  
Delta R.T.: -0.009 min  
Response: 1792409  
Conc: 20.05 ug/ml



#15 Chrysene (C27.41)  
R.T.: 14.448 min  
Delta R.T.: -0.009 min  
Response: 1918691  
Conc: 21.13 ug/ml

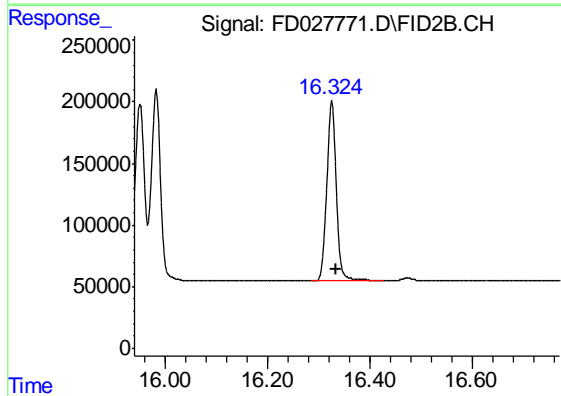


#16 benzo[b]fluoranthene (C30.41)  
R.T.: 15.950 min  
Delta R.T.: -0.008 min  
Response: 1909242  
Conc: 19.55 ug/ml m



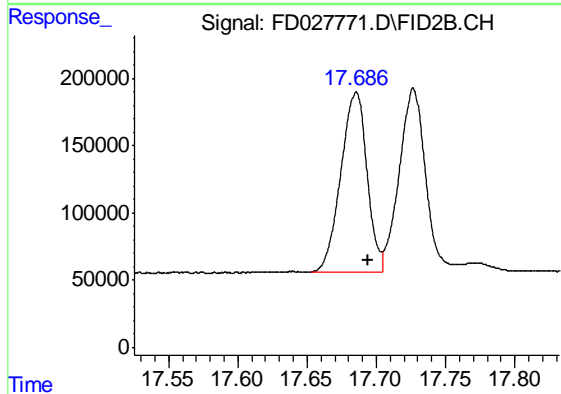
#17 Bnezo[k]fluoranthene (C30.14)

R.T.: 15.981 min  
Delta R.T.: -0.009 min  
Response: 1918395  
Conc: 19.40 ug/ml m



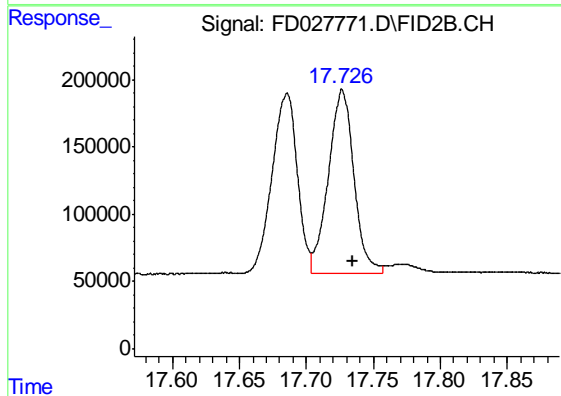
#18 Benzo[a]pyrene (C31.34)

R.T.: 16.324 min  
Delta R.T.: -0.010 min  
Response: 1897366  
Conc: 19.41 ug/ml m



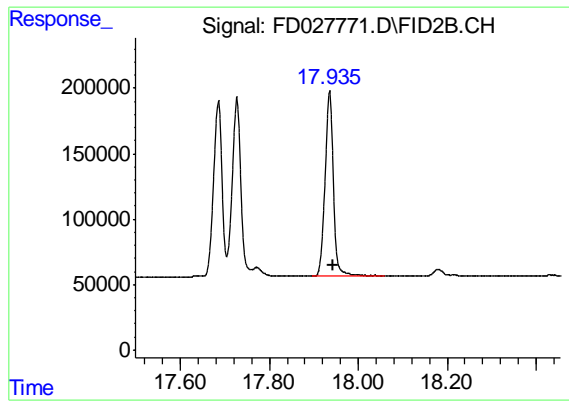
#19 Indeno[1,2,3-cd]pyrene (C35.01)

R.T.: 17.686 min  
Delta R.T.: -0.008 min  
Response: 1759937  
Conc: 17.75 ug/ml m



#20 Dibenz[a,h]anthracene (C30.36)

R.T.: 17.726 min  
Delta R.T.: -0.008 min  
Response: 1805389  
Conc: 18.35 ug/ml m



#21 Benzo[g,h,i]perylene (C34.01)

R.T.: 17.935 min  
Delta R.T.: -0.009 min  
Response: 1846076  
Conc: 18.21 ug/ml m