

Data Path : Z:\pestpcbsrv\HPCHEM1\FID_D\Data\FD021519AR\
 Data File : FD027777.D
 Signal(s) : FID2B.CH
 Acq On : 15 Feb 2019 20:13
 Operator : AJ\SJ
 Sample : K1484-01
 Misc :
 ALS Vial : 59 Sample Multiplier: 1

Integration File: autoint1.e
 Quant Time: Feb 16 00:47:05 2019
 Quant Method : Z:\pestpcbsrv\HPCHEM1\FID_D\methods\Aromatic EPH 020419.M
 Quant Title : GC Extractables
 QLast Update : Tue Feb 05 01:03:41 2019
 Response via : Initial Calibration
 Integrator: ChemStation 6890 Scale Mode: Large solvent peaks clipped

Volume Inj. : 1 µl
 Signal Phase : Rxi-1ms
 Signal Info : 20M x 0.18mm x 0.18µm

Compound	R.T.	Response	Conc Units
System Monitoring Compounds			
4) S 2-Bromonaphthalene (S...	7.335	2844291	38.312 ug/ml
Spiked Amount	50.000	Recovery =	76.62%
6) S 2-Fluorobiphenyl (SURR)	8.184	1954919	38.424 ug/ml
Spiked Amount	50.000 Range 0 - 131	Recovery =	76.85%
11) S ortho-Terphenyl (SURR)	11.223	1787925	20.170 ug/ml
Spiked Amount	50.000	Recovery =	40.34%

Target Compounds

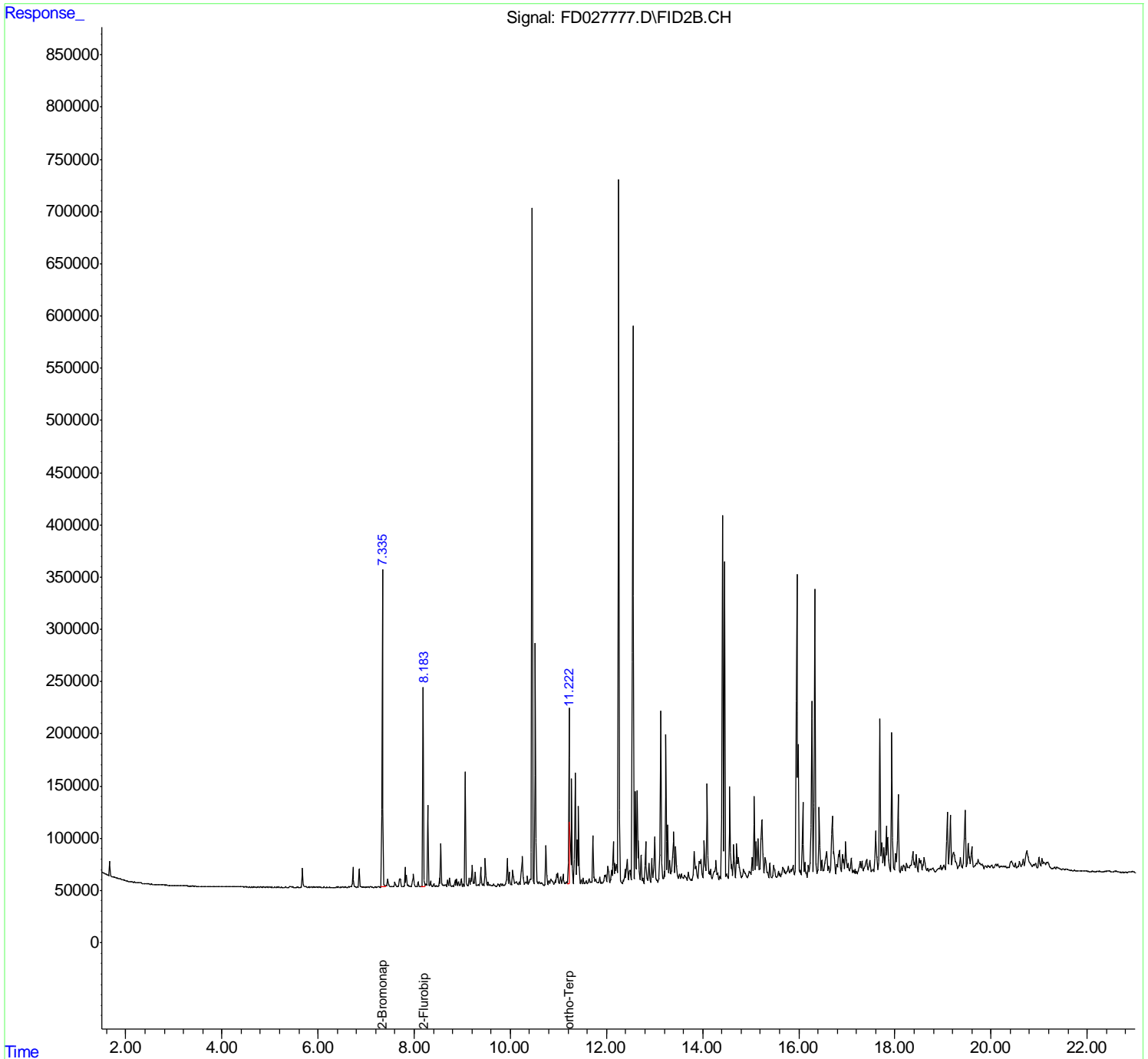
(f)=RT Delta > 1/2 Window

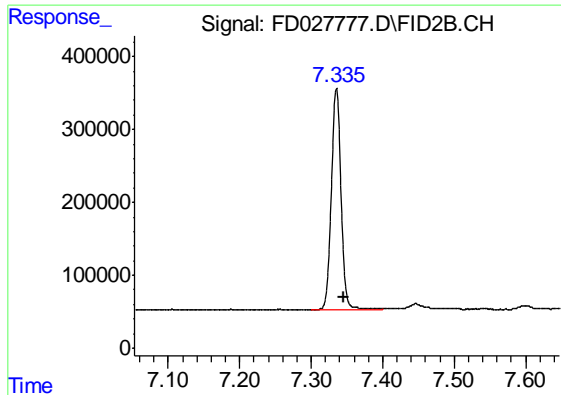
(m)=manual int.

Data Path : Z:\pestpcbsrv\HPCHEM1\FID_D\Data\FD021519AR\
Data File : FD027777.D
Signal(s) : FID2B.CH
Acq On : 15 Feb 2019 20:13
Operator : AJ\SJ
Sample : K1484-01
Misc :
ALS Vial : 59 Sample Multiplier: 1

Integration File: autoint1.e
Quant Time: Feb 16 00:47:05 2019
Quant Method : Z:\pestpcbsrv\HPCHEM1\FID_D\methods\Aromatic EPH 020419.M
Quant Title : GC Extractables
QLast Update : Tue Feb 05 01:03:41 2019
Response via : Initial Calibration
Integrator: ChemStation 6890 Scale Mode: Large solvent peaks clipped

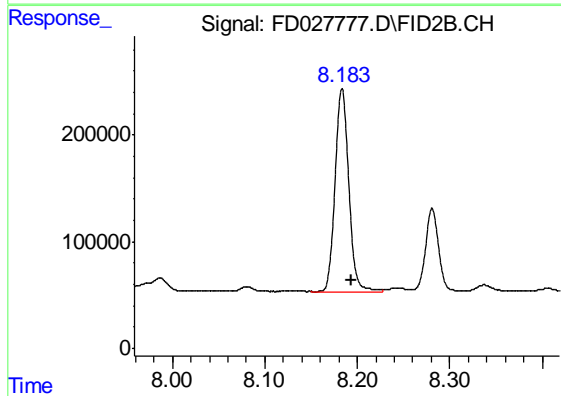
Volume Inj. : 1 µl
Signal Phase : Rxi-1ms
Signal Info : 20M x 0.18mm x 0.18µm





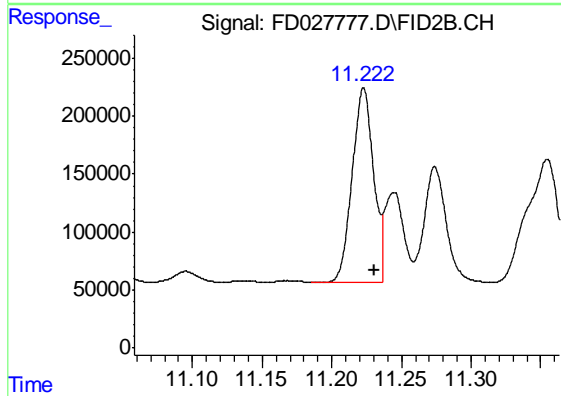
#4 2-Bromonaphthalene (SURR)

R.T.: 7.335 min
Delta R.T.: -0.010 min
Response: 2844291
Conc: 38.31 ug/ml



#6 2-Fluorobiphenyl (SURR)

R.T.: 8.184 min
Delta R.T.: -0.010 min
Response: 1954919
Conc: 38.42 ug/ml



#11 ortho-Terphenyl (SURR)

R.T.: 11.223 min
Delta R.T.: -0.008 min
Response: 1787925
Conc: 20.17 ug/ml