

Data Path : Z:\pestpcbsrv\HPCHEM1\FID\_D\Data\FD021720AL\  
 Data File : FD032347.D  
 Signal(s) : FID2B.CH  
 Acq On : 17 Feb 2020 23:24  
 Operator : DD\AJ  
 Sample : 20 PPM ALIPHATIC HC STD  
 Misc :  
 ALS Vial : 52 Sample Multiplier: 1

Integration File: autoint1.e  
 Quant Time: Feb 18 01:16:47 2020  
 Quant Method : Z:\pestpcbsrv\HPCHEM1\FID\_D\methods\Alaphatic EPH 020420.M  
 Quant Title : GC Extractables  
 QLast Update : Wed Feb 05 06:50:50 2020  
 Response via : Initial Calibration  
 Integrator: ChemStation 6890 Scale Mode: Large solvent peaks clipped

Volume Inj. : 1 ul  
 Signal Phase : Rxi-1ms  
 Signal Info : 20M x 0.18mm x 0.18um

Compound	R.T.	Response	Conc Units
-----			
System Monitoring Compounds			
9) S ortho-Terphenyl (SURR)	11.526	2741218	17.990 ug/ml
Spiked Amount	50.000	Recovery	= 35.98%
12) S 1-chlorooctadecane (S...	12.956	2081371	17.629 ug/ml
Spiked Amount	50.000	Recovery	= 35.26%
Target Compounds			
1) T n-Nonane (C9)	3.329	2590043	19.141 ug/ml
2) T n-Decane (C10)	4.391	2612691	19.291 ug/ml
3) T A~Naphthalene (C11.7)	5.967	2908530	19.049 ug/ml
4) T n-Dodecane (C12)	6.398	2625126	19.190 ug/ml
5) T A~2-methylnaphthalene...	7.017	2903544	18.884 ug/ml
6) T n-Tetradecane (C14)	8.184	2600075	18.840 ug/ml
7) T n-Hexadecane (C16)	9.776	2571421	18.663 ug/ml
8) T n-Octadecane (C18)	11.212	2534284	18.321 ug/ml
10) T n-Eicosane (C20)	12.514	2479883	17.905 ug/ml
11) T n-Heneicosane (C21)	13.123	2462342	17.609 ug/ml
13) T n-Docosane (C22)	13.707	2415888	17.414 ug/ml
14) T n-Tetracosane (C24)	14.805	2373883	17.099 ug/ml
15) T n-Hexacosane (C26)	15.821	2302151	16.819 ug/ml
16) T n-Octacosane (C28)	16.766	2224752	16.593 ug/ml
17) T n-Tricontane (C30)	17.650	2124161	16.509 ug/ml
18) T n-Dotriacontane (C32)	18.477	1799770	16.165 ug/ml
19) T n-Tetratriacontane (C34)	19.257	1546932	16.735 ug/ml
20) T n-Hexatriacontane (C36)	19.993	1406280	15.923 ug/ml
21) T n-Octatriacontane (C38)	20.709	1327217	17.213 ug/ml
22) T n-Tetracontane (C40)	21.576	1385066	15.640 ug/ml

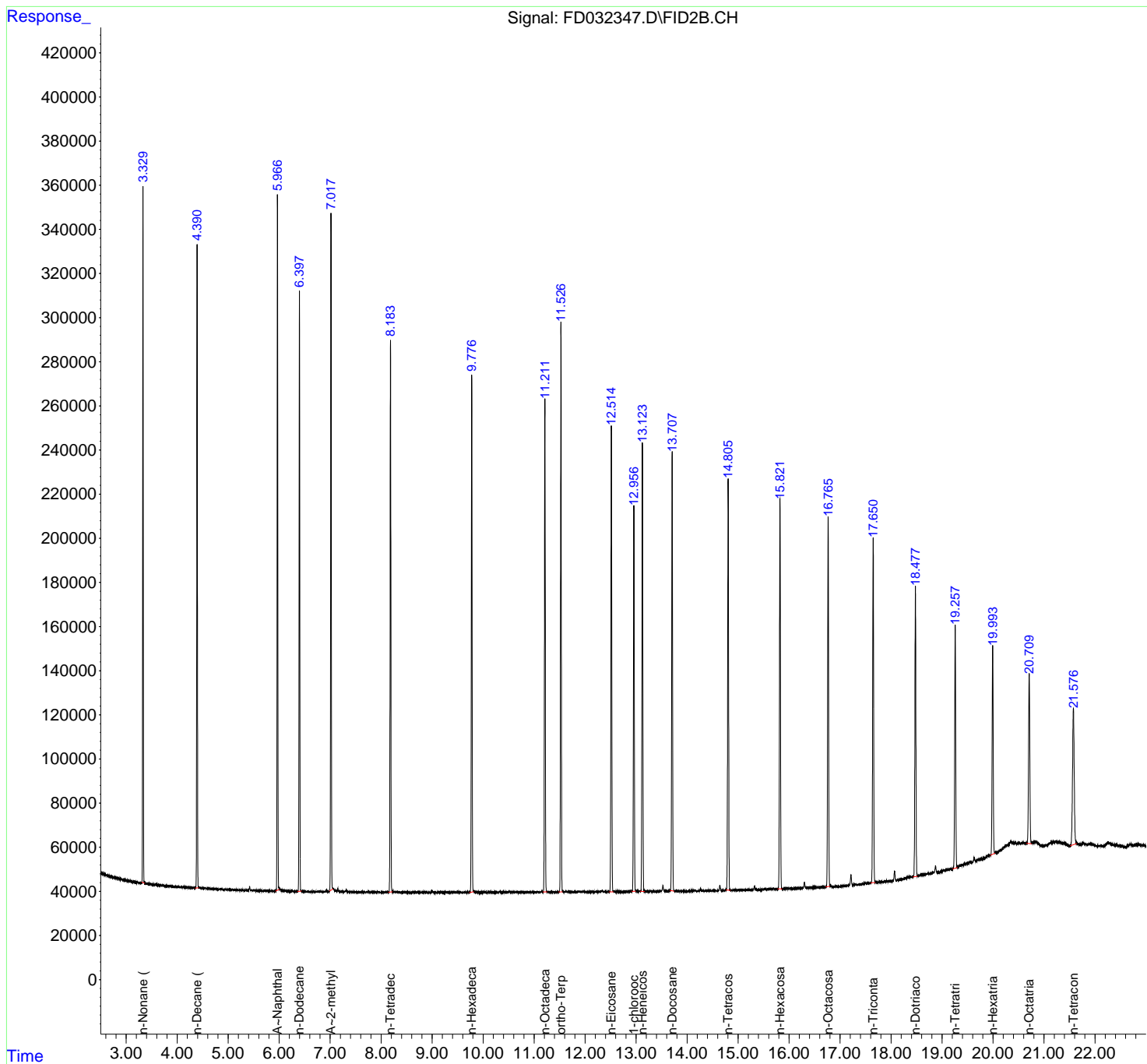
(f)=RT Delta > 1/2 Window

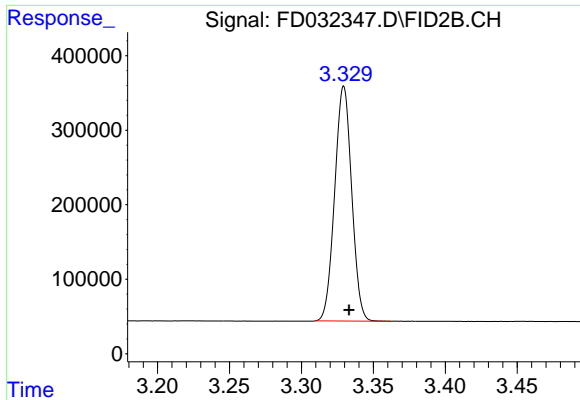
(m)=manual int.

Data Path : Z:\pestpcbsrv\HPCHEM1\FID\_D\Data\FD021720AL\  
 Data File : FD032347.D  
 Signal(s) : FID2B.CH  
 Acq On : 17 Feb 2020 23:24  
 Operator : DD\AJ  
 Sample : 20 PPM ALIPHATIC HC STD  
 Misc :  
 ALS Vial : 52 Sample Multiplier: 1

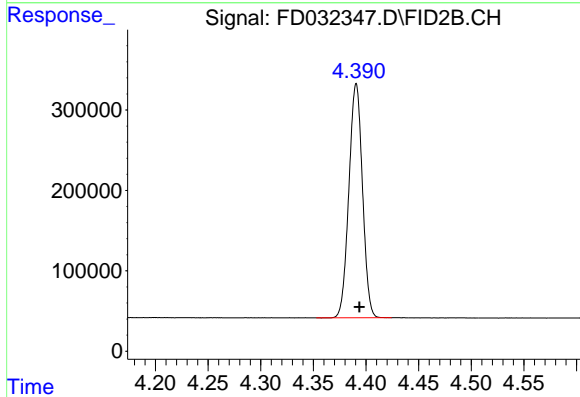
Integration File: autoint1.e  
 Quant Time: Feb 18 01:16:47 2020  
 Quant Method : Z:\pestpcbsrv\HPCHEM1\FID\_D\methods\Aliphatic EPH 020420.M  
 Quant Title : GC Extractables  
 QLast Update : Wed Feb 05 06:50:50 2020  
 Response via : Initial Calibration  
 Integrator: ChemStation 6890 Scale Mode: Large solvent peaks clipped

Volume Inj. : 1 ul  
 Signal Phase : Rxi-1ms  
 Signal Info : 20M x 0.18mm x 0.18um

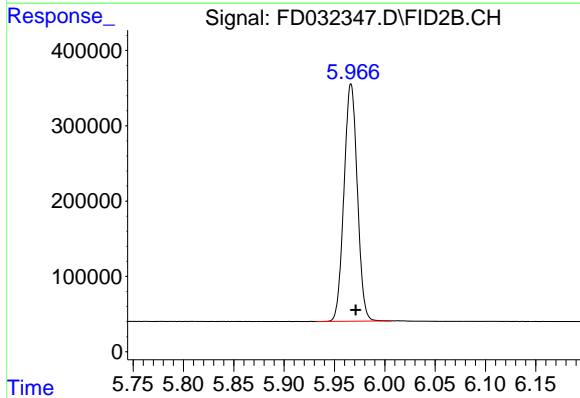




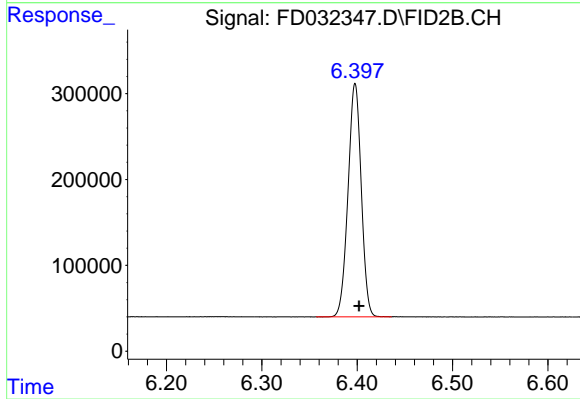
#1 n-Nonane (C9)  
R.T.: 3.329 min  
Delta R.T.: -0.004 min  
Response: 2590043  
Conc: 19.14 ug/ml



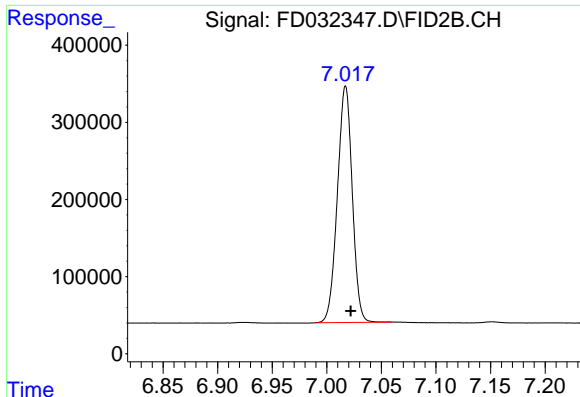
#2 n-Decane (C10)  
R.T.: 4.391 min  
Delta R.T.: -0.003 min  
Response: 2612691  
Conc: 19.29 ug/ml



#3 A~Naphthalene (C11.7)  
R.T.: 5.967 min  
Delta R.T.: -0.005 min  
Response: 2908530  
Conc: 19.05 ug/ml

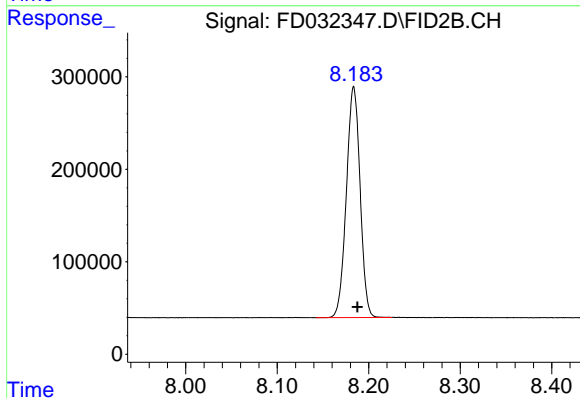


#4 n-Dodecane (C12)  
R.T.: 6.398 min  
Delta R.T.: -0.004 min  
Response: 2625126  
Conc: 19.19 ug/ml



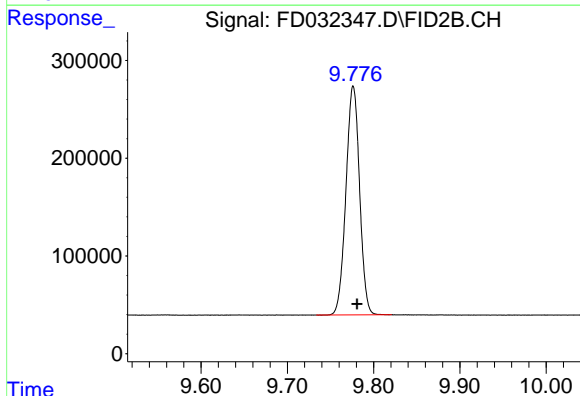
#5 A~2-methylnaphthalene (C12.89)

R.T.: 7.017 min  
Delta R.T.: -0.005 min  
Response: 2903544  
Conc: 18.88 ug/ml



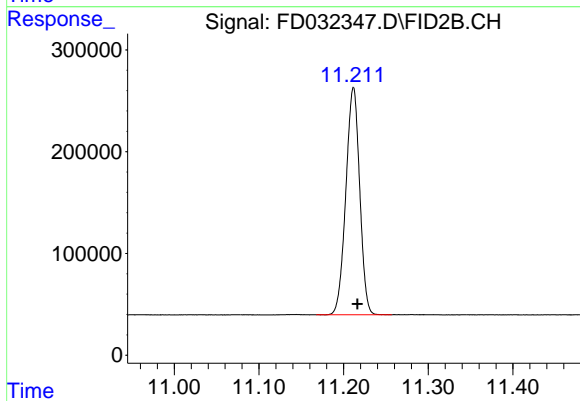
#6 n-Tetradecane (C14)

R.T.: 8.184 min  
Delta R.T.: -0.004 min  
Response: 2600075  
Conc: 18.84 ug/ml



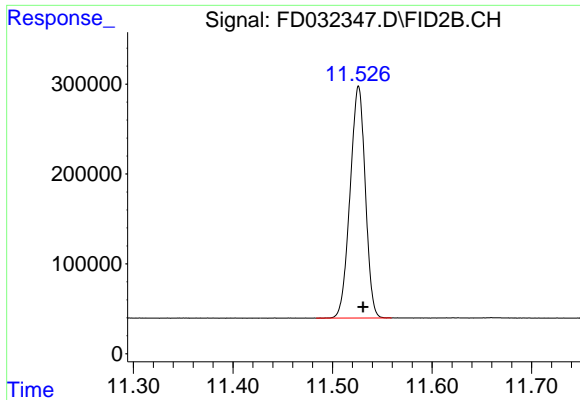
#7 n-Hexadecane (C16)

R.T.: 9.776 min  
Delta R.T.: -0.005 min  
Response: 2571421  
Conc: 18.66 ug/ml



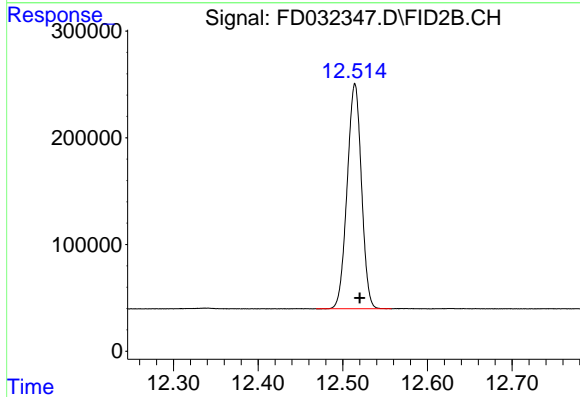
#8 n-Octadecane (C18)

R.T.: 11.212 min  
Delta R.T.: -0.005 min  
Response: 2534284  
Conc: 18.32 ug/ml



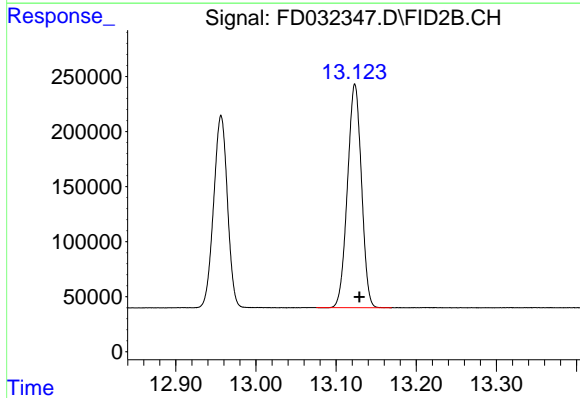
#9 ortho-Terphenyl (SURR)

R.T.: 11.526 min  
 Delta R.T.: -0.004 min  
 Response: 2741218  
 Conc: 17.99 ug/ml



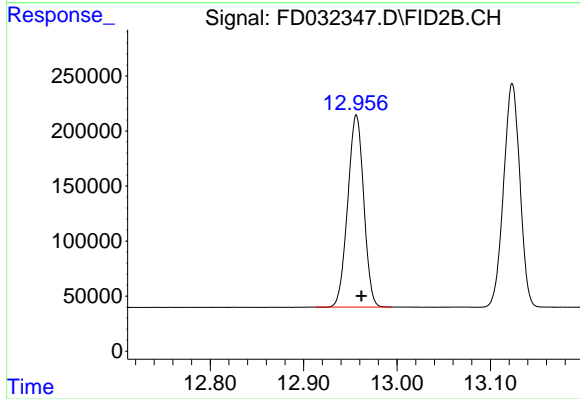
#10 n-Eicosane (C20)

R.T.: 12.514 min  
 Delta R.T.: -0.006 min  
 Response: 2479883  
 Conc: 17.91 ug/ml



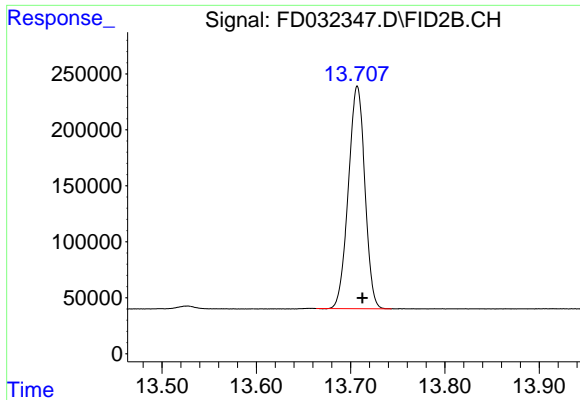
#11 n-Heneicosane (C21)

R.T.: 13.123 min  
 Delta R.T.: -0.005 min  
 Response: 2462342  
 Conc: 17.61 ug/ml



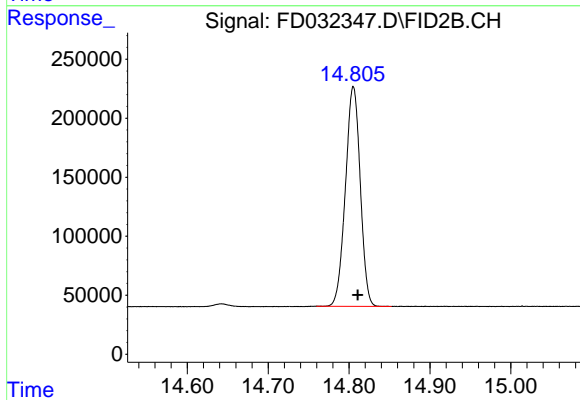
#12 1-chlorooctadecane (SURR)

R.T.: 12.956 min  
 Delta R.T.: -0.006 min  
 Response: 2081371  
 Conc: 17.63 ug/ml



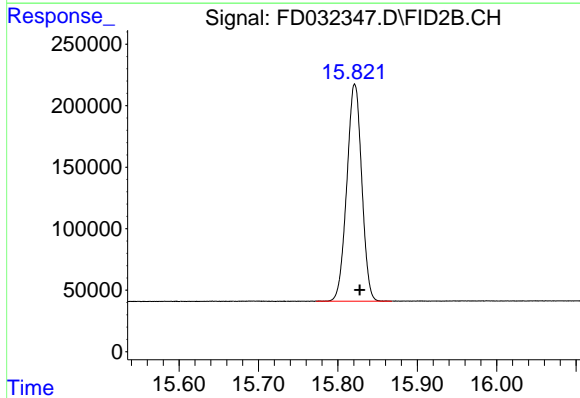
#13 n-Docosane (C22)

R.T.: 13.707 min  
Delta R.T.: -0.005 min  
Response: 2415888  
Conc: 17.41 ug/ml



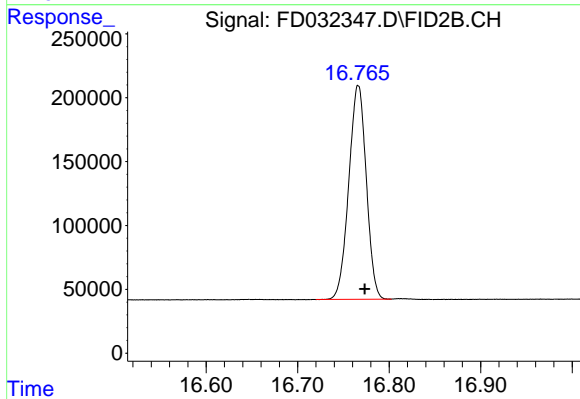
#14 n-Tetracosane (C24)

R.T.: 14.805 min  
Delta R.T.: -0.006 min  
Response: 2373883  
Conc: 17.10 ug/ml



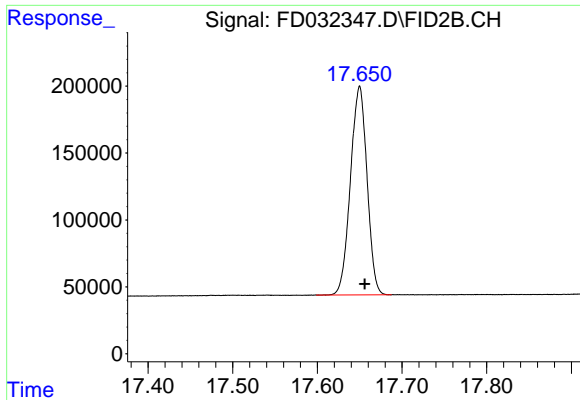
#15 n-Hexacosane (C26)

R.T.: 15.821 min  
Delta R.T.: -0.006 min  
Response: 2302151  
Conc: 16.82 ug/ml



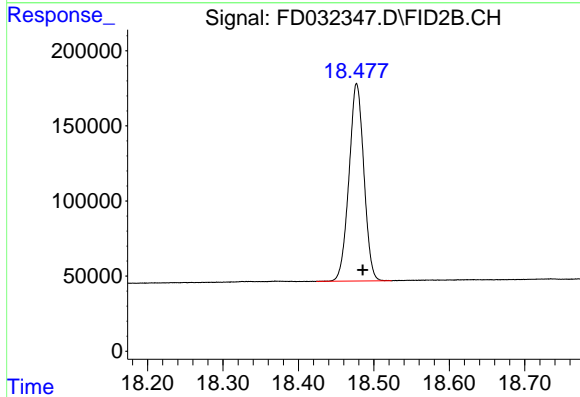
#16 n-Octacosane (C28)

R.T.: 16.766 min  
Delta R.T.: -0.007 min  
Response: 2224752  
Conc: 16.59 ug/ml



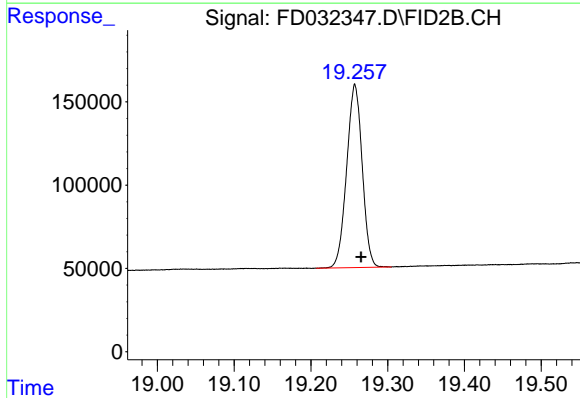
#17 n-Tricontane (C30)

R.T.: 17.650 min  
Delta R.T.: -0.006 min  
Response: 2124161  
Conc: 16.51 ug/ml



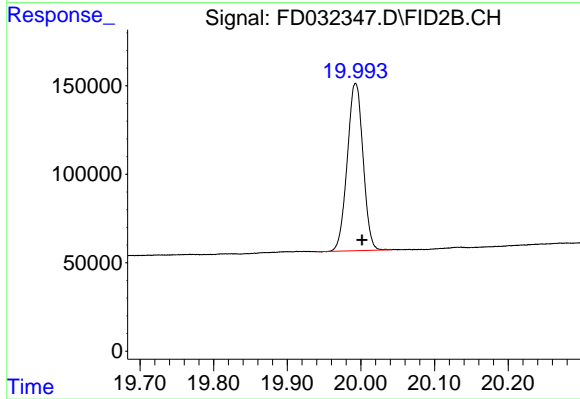
#18 n-Dotriacontane (C32)

R.T.: 18.477 min  
Delta R.T.: -0.008 min  
Response: 1799770  
Conc: 16.16 ug/ml



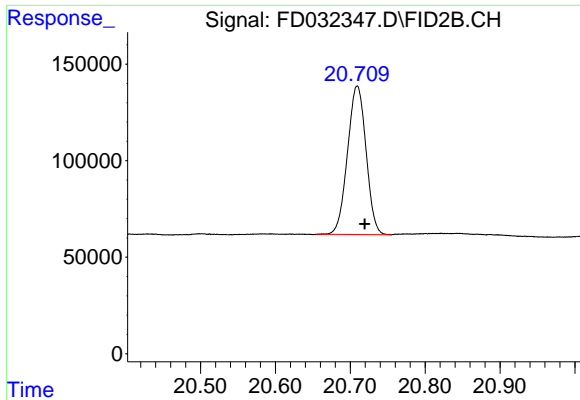
#19 n-Tetratriacontane (C34)

R.T.: 19.257 min  
Delta R.T.: -0.008 min  
Response: 1546932  
Conc: 16.73 ug/ml



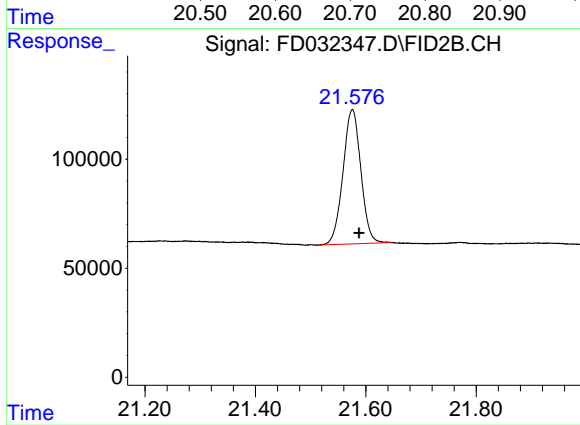
#20 n-Hexatriacontane (C36)

R.T.: 19.993 min  
Delta R.T.: -0.009 min  
Response: 1406280  
Conc: 15.92 ug/ml



#21 n-Octatriacontane (C38)

R.T.: 20.709 min  
Delta R.T.: -0.010 min  
Response: 1327217  
Conc: 17.21 ug/ml



#22 n-Tetracontane (C40)

R.T.: 21.576 min  
Delta R.T.: -0.012 min  
Response: 1385066  
Conc: 15.64 ug/ml