

Data Path : Z:\pestpcbsrv\HPCHEM1\FID_D\Data\FD022020AR\
 Data File : FD032355.D
 Signal(s) : FID2B.CH
 Acq On : 20 Feb 2020 12:58
 Operator : DD\AJ
 Sample : L1573-03D
 Misc :
 ALS Vial : 57 Sample Multiplier: 1

Integration File: autoint1.e
 Quant Time: Feb 21 01:04:31 2020
 Quant Method : Z:\pestpcbsrv\HPCHEM1\FID_D\methods\Aromatic EPH 020420.M
 Quant Title : GC Extractables
 QLast Update : Wed Feb 05 11:53:53 2020
 Response via : Initial Calibration
 Integrator: ChemStation 6890 Scale Mode: Large solvent peaks clipped

Volume Inj. : 1 µl
 Signal Phase : Rxi-1ms
 Signal Info : 20M x 0.18mm x 0.18µm

Compound	R.T.	Response	Conc Units

System Monitoring Compounds			
4) S 2-Bromonaphthalene (S...	7.631	8795539	63.291 ug/ml
Spiked Amount 50.000		Recovery =	126.58%
6) S 2-Fluorobiphenyl (SURR)	8.492	5259373	55.460 ug/ml
Spiked Amount 50.000 Range 0 - 131		Recovery =	110.92%
11) S ortho-Terphenyl (SURR)	11.531	9099294	61.346 ug/ml
Spiked Amount 50.000		Recovery =	122.69%

Target Compounds

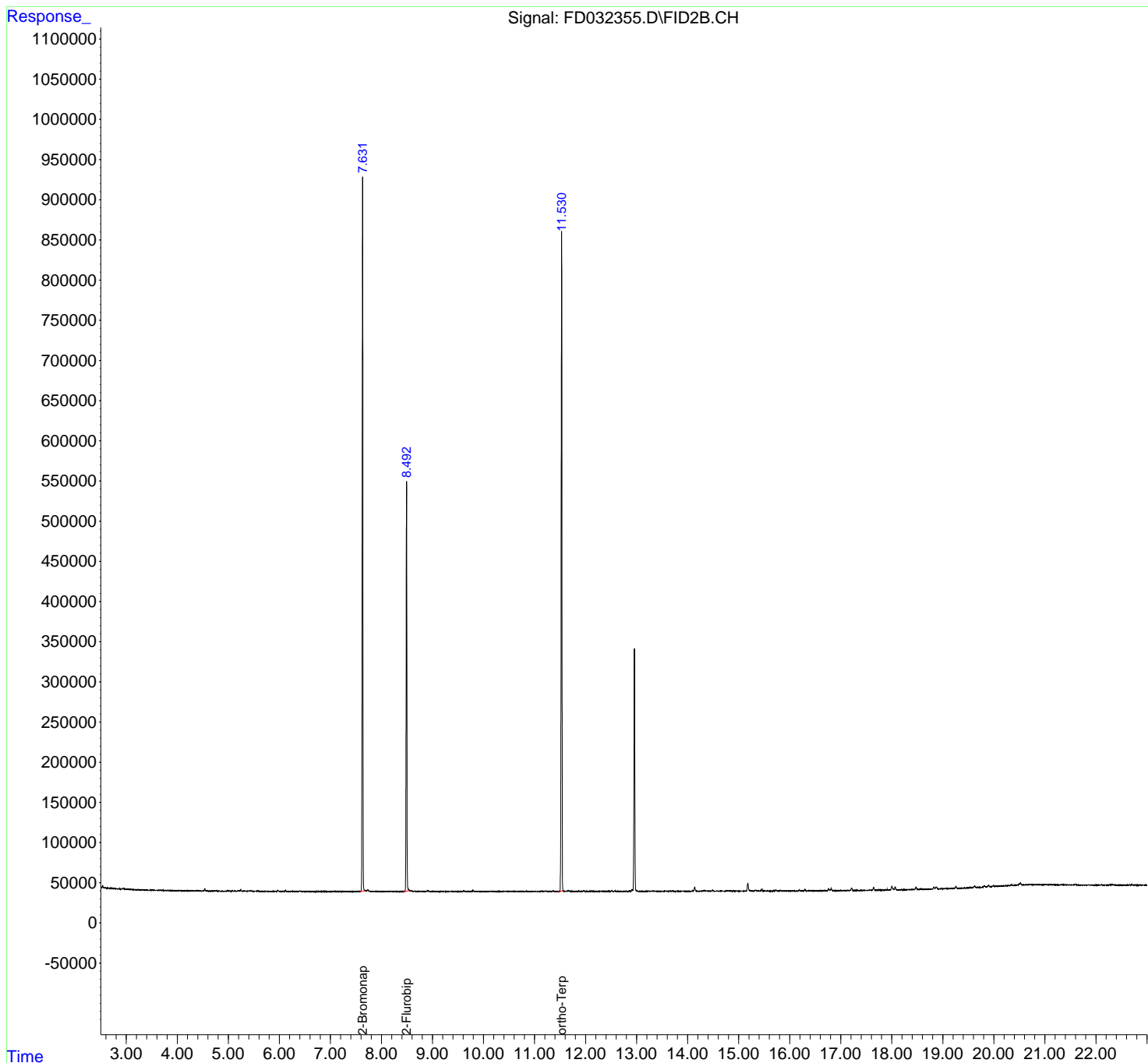
(f)=RT Delta > 1/2 Window

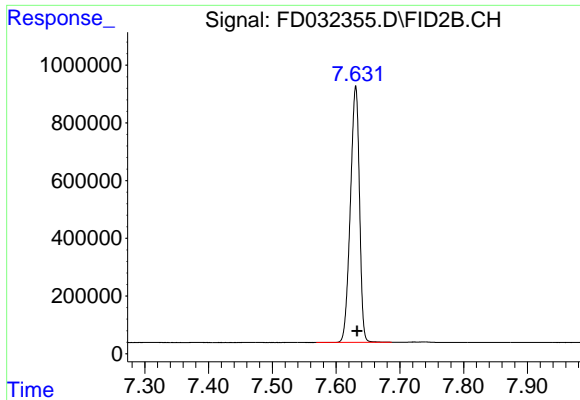
(m)=manual int.

Data Path : Z:\pestpcbsrv\HPCHEM1\FID_D\Data\FD022020AR\
Data File : FD032355.D
Signal(s) : FID2B.CH
Acq On : 20 Feb 2020 12:58
Operator : DD\AJ
Sample : L1573-03D
Misc :
ALS Vial : 57 Sample Multiplier: 1

Integration File: autoint1.e
Quant Time: Feb 21 01:04:31 2020
Quant Method : Z:\pestpcbsrv\HPCHEM1\FID_D\methods\Aromatic EPH 020420.M
Quant Title : GC Extractables
QLast Update : Wed Feb 05 11:53:53 2020
Response via : Initial Calibration
Integrator: ChemStation 6890 Scale Mode: Large solvent peaks clipped

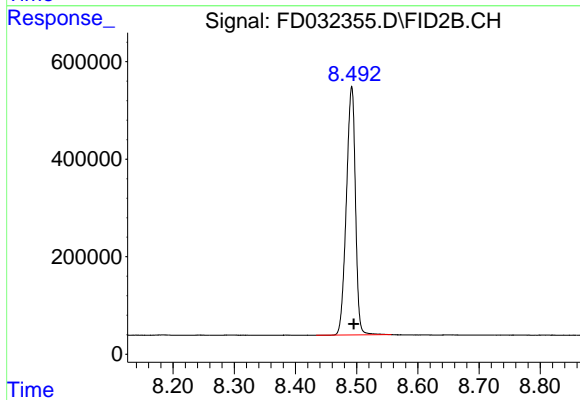
Volume Inj. : 1 µl
Signal Phase : Rxi-1ms
Signal Info : 20M x 0.18mm x 0.18µm





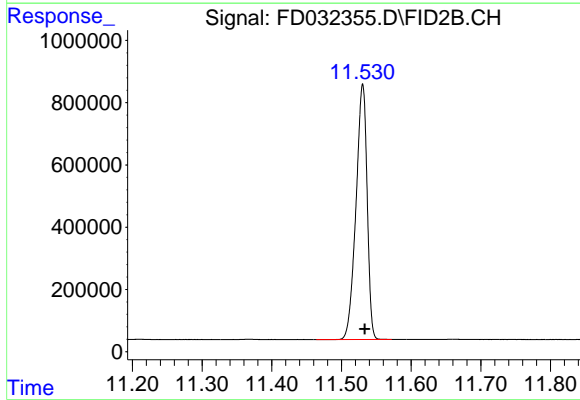
#4 2-Bromonaphthalene (SURR)

R.T.: 7.631 min
Delta R.T.: -0.002 min
Response: 8795539
Conc: 63.29 ug/ml



#6 2-Fluorobiphenyl (SURR)

R.T.: 8.492 min
Delta R.T.: -0.003 min
Response: 5259373
Conc: 55.46 ug/ml



#11 ortho-Terphenyl (SURR)

R.T.: 11.531 min
Delta R.T.: -0.003 min
Response: 9099294
Conc: 61.35 ug/ml