

Data Path : Z:\pestpcbsrv\HPCHEM1\FID_D\Data\FD02223AR\
Data File : FD045116.D
Signal(s) : FID2B.ch
Acq On : 22 Feb 2023 10:32
Operator : YP/AJ
Sample : I.BLK
Misc :
ALS Vial : 51 Sample Multiplier: 1

Integration File: autoint1.e
Quant Time: Feb 23 05:56:54 2023
Quant Method : Z:\pestpcbsrv\HPCHEM1\FID_D\methods\Aromatic EPH 022123.M
Quant Title : GC Extractables
QLast Update : Wed Feb 22 04:55:52 2023
Response via : Initial Calibration
Integrator: ChemStation

Volume Inj. : 1 µl
Signal Phase : Rxi-1ms
Signal Info : 20M x 0.18mm x 0.18µm

Compound	R.T.	Response	Conc Units

System Monitoring Compounds			
Target Compounds			

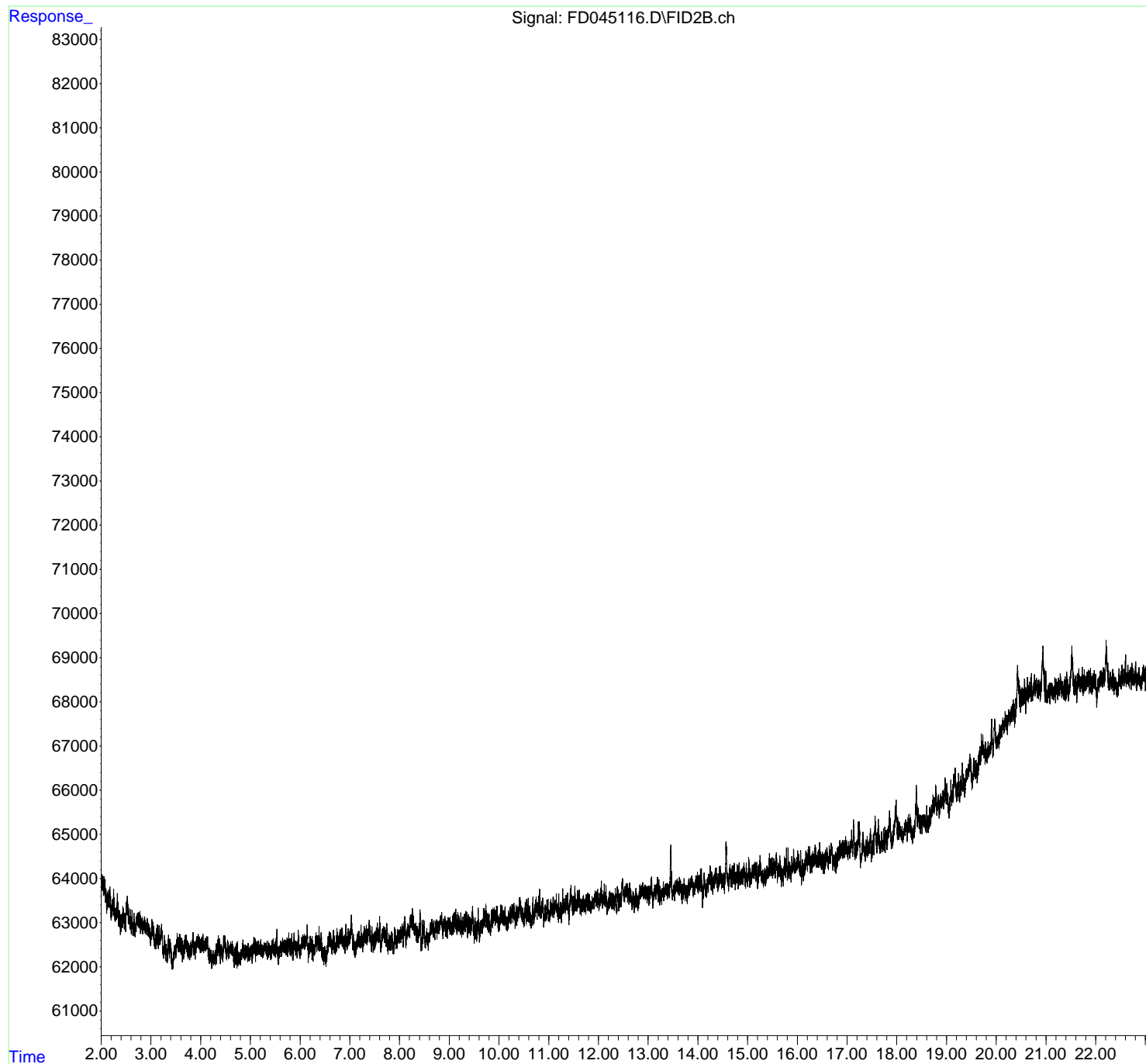
(f)=RT Delta > 1/2 Window

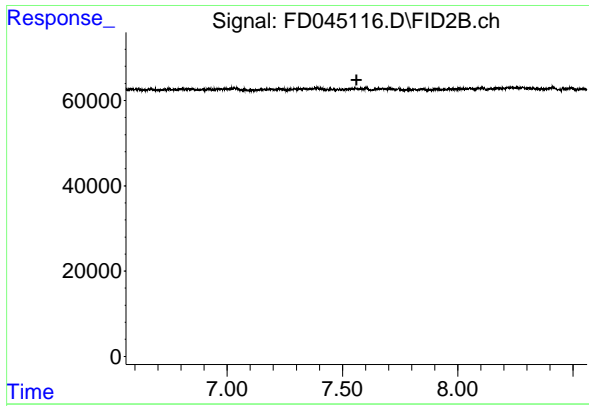
(m)=manual int.

Data Path : Z:\pestpcbsrv\HPCHEM1\FID_D\Data\FD022223AR\
Data File : FD045116.D
Signal(s) : FID2B.ch
Acq On : 22 Feb 2023 10:32
Operator : YP/AJ
Sample : I.BLK
Misc :
ALS Vial : 51 Sample Multiplier: 1

Integration File: autoint1.e
Quant Time: Feb 23 05:56:54 2023
Quant Method : Z:\pestpcbsrv\HPCHEM1\FID_D\methods\Aromatic EPH 022123.M
Quant Title : GC Extractables
QLast Update : Wed Feb 22 04:55:52 2023
Response via : Initial Calibration
Integrator: ChemStation

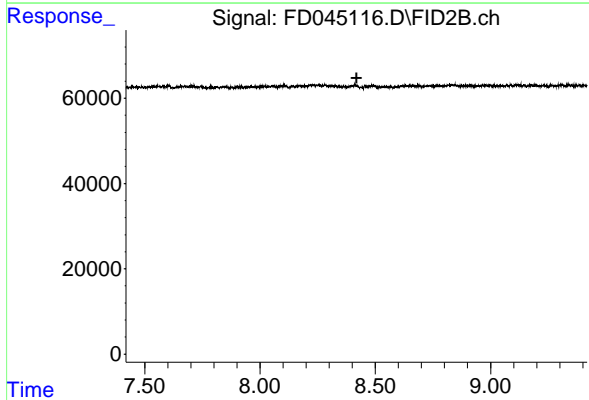
Volume Inj. : 1 μ l
Signal Phase : Rxi-1ms
Signal Info : 20M x 0.18mm x 0.18 μ m





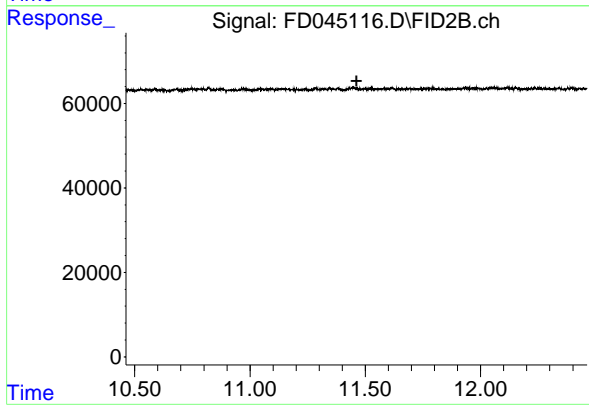
#4 2-Bromonaphthalene (SURR)

R.T.: 0.000 min
Exp R.T. : 7.561 min
Response: 0
Conc: N.D.



#6 2-Fluorobiphenyl (SURR)

R.T.: 0.000 min
Exp R.T. : 8.418 min
Response: 0
Conc: N.D.



#11 ortho-Terphenyl (SURR)

R.T.: 0.000 min
Exp R.T. : 11.462 min
Response: 0
Conc: N.D.