

Data Path : Z:\pestpcbsrv\HPCHEM1\FID\_D\Data\FD022519AR\  
 Data File : FD027943.D  
 Signal(s) : FID2B.CH  
 Acq On : 25 Feb 2019 18:51  
 Operator : AJ\SJ  
 Sample : K1586-02  
 Misc :  
 ALS Vial : 58 Sample Multiplier: 1

Integration File: autoint1.e  
 Quant Time: Feb 26 02:25:30 2019  
 Quant Method : Z:\pestpcbsrv\HPCHEM1\FID\_D\methods\Aromatic EPH 020419.M  
 Quant Title : GC Extractables  
 QLast Update : Tue Feb 05 01:03:41 2019  
 Response via : Initial Calibration  
 Integrator: ChemStation 6890 Scale Mode: Large solvent peaks clipped

Volume Inj. : 1 µl  
 Signal Phase : Rxi-1ms  
 Signal Info : 20M x 0.18mm x 0.18µm

Compound	R.T.	Response	Conc Units
-----			
System Monitoring Compounds			
4) S 2-Bromonaphthalene (S...	7.336	2997135	40.371 ug/ml
Spiked Amount 50.000		Recovery =	80.74%
6) S 2-Fluorobiphenyl (SURR)	8.184	1966038	38.642 ug/ml
Spiked Amount 50.000 Range 0 - 131		Recovery =	77.28%
11) S ortho-Terphenyl (SURR)	11.219	2080585	23.471 ug/ml
Spiked Amount 50.000		Recovery =	46.94%

Target Compounds

-----

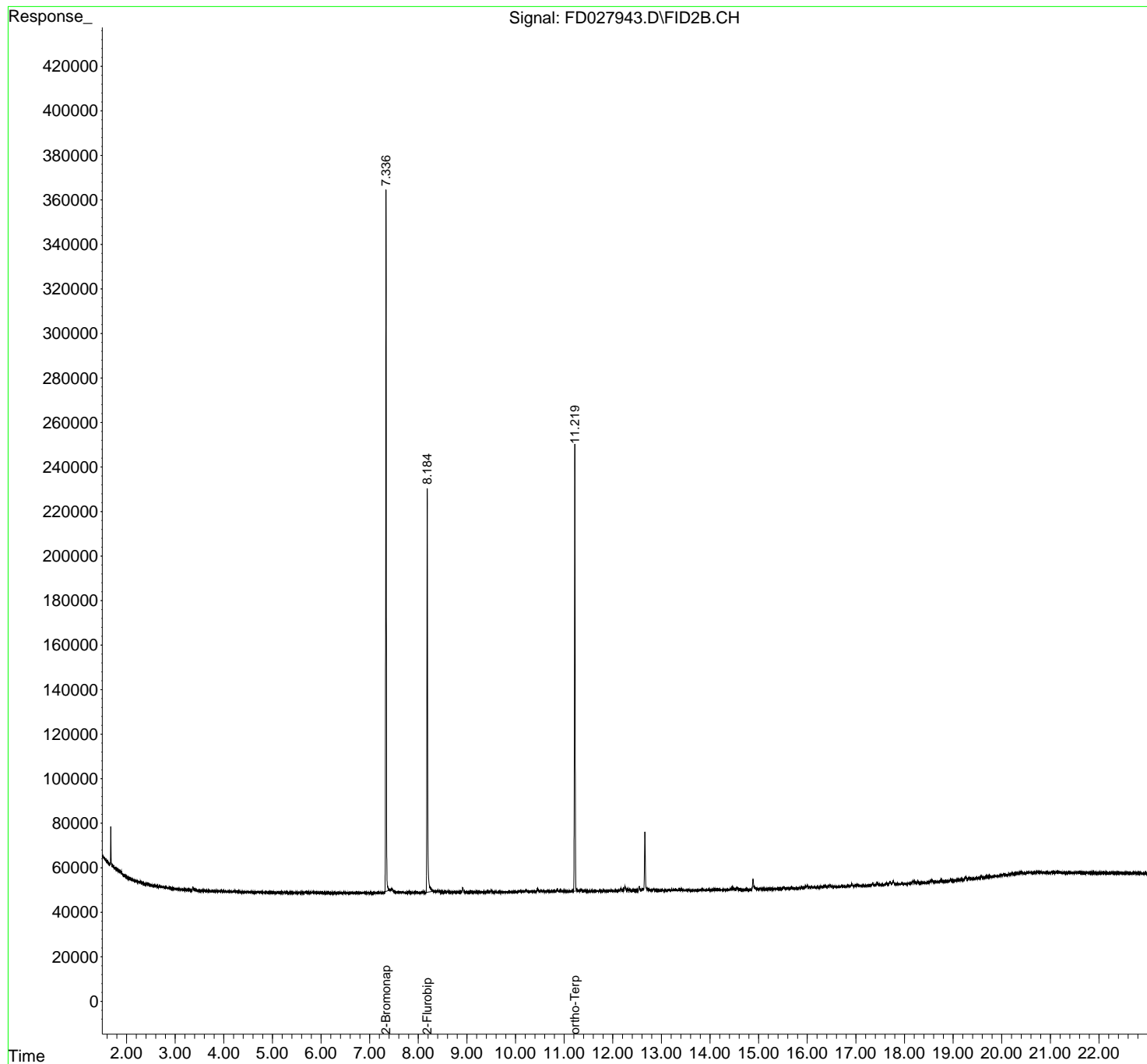
(f)=RT Delta > 1/2 Window

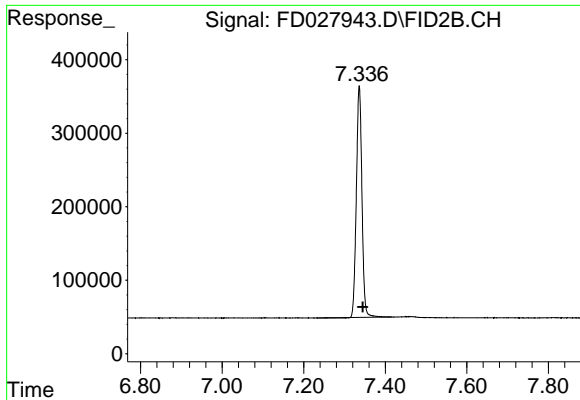
(m)=manual int.

Data Path : Z:\pestpcbsrv\HPCHEM1\FID\_D\Data\FD022519AR\  
Data File : FD027943.D  
Signal(s) : FID2B.CH  
Acq On : 25 Feb 2019 18:51  
Operator : AJ\SJ  
Sample : K1586-02  
Misc :  
ALS Vial : 58 Sample Multiplier: 1

Integration File: autoint1.e  
Quant Time: Feb 26 02:25:30 2019  
Quant Method : Z:\pestpcbsrv\HPCHEM1\FID\_D\methods\Aromatic EPH 020419.M  
Quant Title : GC Extractables  
QLast Update : Tue Feb 05 01:03:41 2019  
Response via : Initial Calibration  
Integrator: ChemStation 6890 Scale Mode: Large solvent peaks clipped

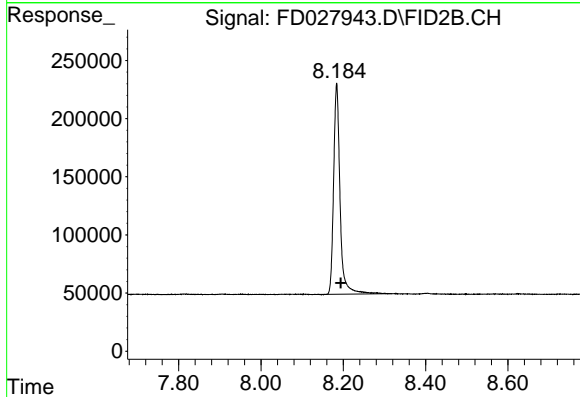
Volume Inj. : 1 µl  
Signal Phase : Rxi-1ms  
Signal Info : 20M x 0.18mm x 0.18µm





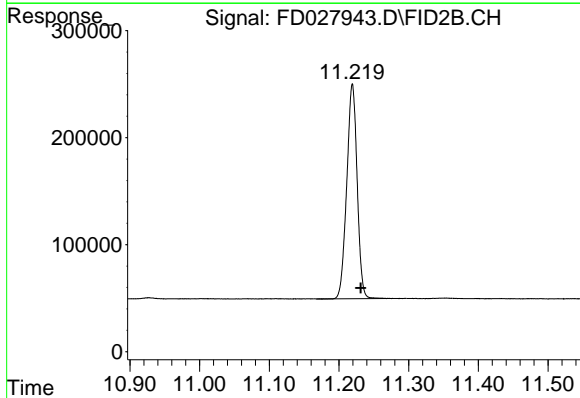
#4 2-Bromonaphthalene (SURR)

R.T.: 7.336 min  
Delta R.T.: -0.009 min  
Response: 2997135  
Conc: 40.37 ug/ml



#6 2-Fluorobiphenyl (SURR)

R.T.: 8.184 min  
Delta R.T.: -0.010 min  
Response: 1966038  
Conc: 38.64 ug/ml



#11 ortho-Terphenyl (SURR)

R.T.: 11.219 min  
Delta R.T.: -0.012 min  
Response: 2080585  
Conc: 23.47 ug/ml