

Data Path : Z:\pestpcbsrv\HPCHEM1\FID_D\Data\FD030223AR\
Data File : FD045201.D
Signal(s) : FID2B.ch
Acq On : 02 Mar 2023 10:41
Operator : YP/AJ
Sample : I.BLK
Misc :
ALS Vial : 51 Sample Multiplier: 1

Instrument :
FID_D
ClientSampleId :

Integration File: autoint1.e
Quant Time: Mar 03 00:18:26 2023
Quant Method : Z:\pestpcbsrv\HPCHEM1\FID_D\methods\Aromatic EPH 030123.M
Quant Title : GC Extractables
QLast Update : Wed Mar 01 16:43:59 2023
Response via : Initial Calibration
Integrator: ChemStation

Volume Inj. : 1 μ l
Signal Phase : Rxi-1ms
Signal Info : 20M x 0.18mm x 0.18 μ m

Compound	R.T.	Response	Conc Units

System Monitoring Compounds			
Target Compounds			

(f)=RT Delta > 1/2 Window

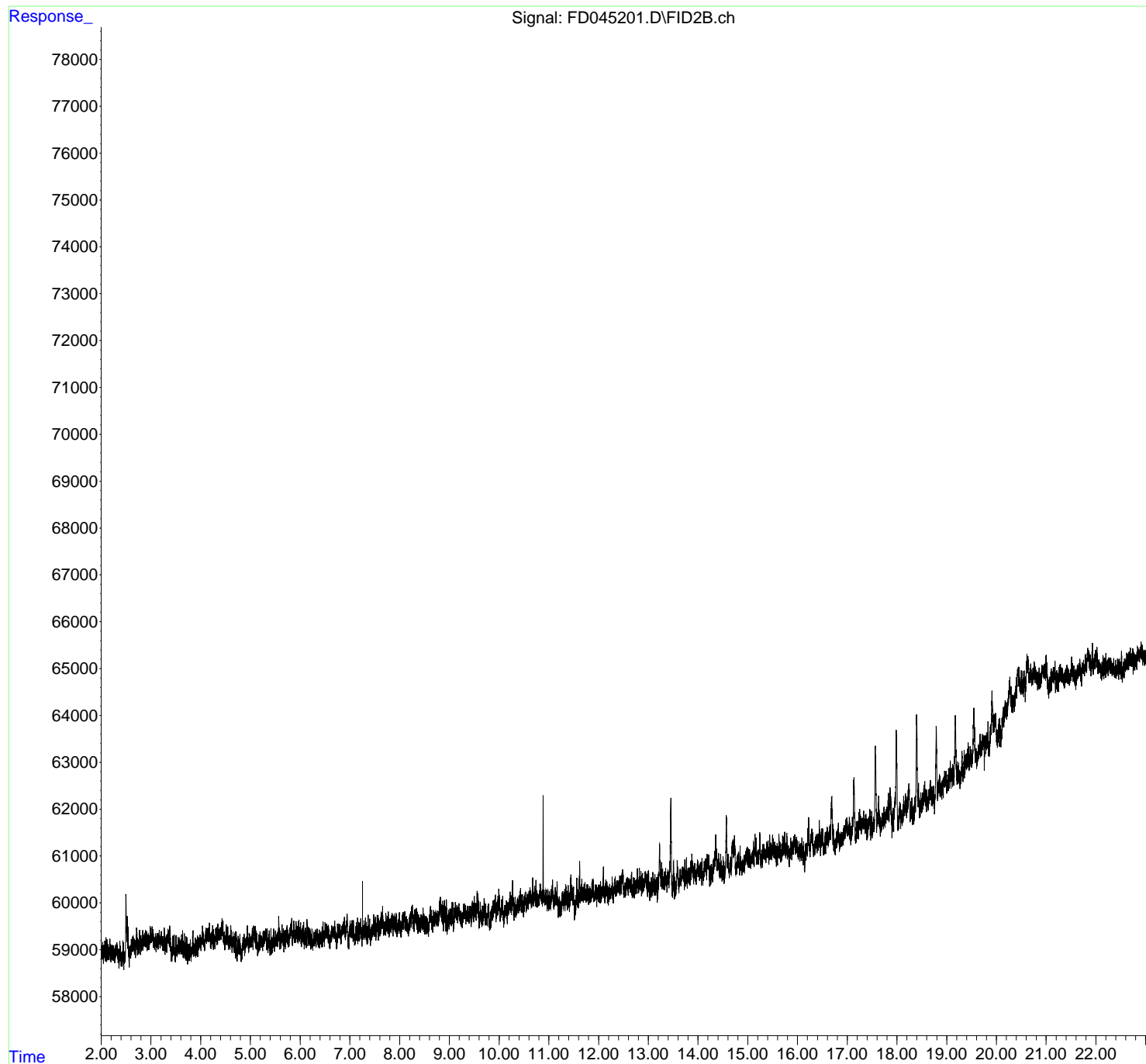
(m)=manual int.

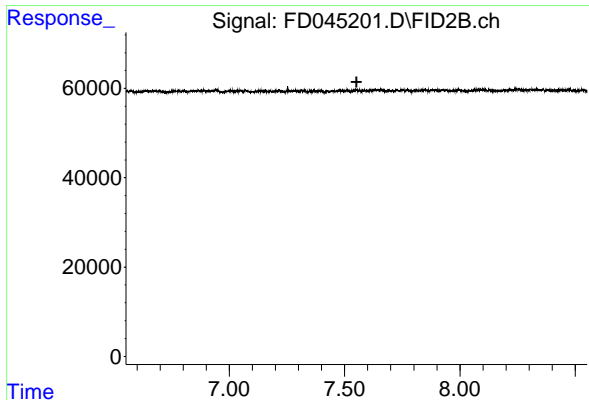
Data Path : Z:\pestpcbsrv\HPCHEM1\FID_D\Data\FD030223AR\
Data File : FD045201.D
Signal(s) : FID2B.ch
Acq On : 02 Mar 2023 10:41
Operator : YP/AJ
Sample : I.BLK
Misc :
ALS Vial : 51 Sample Multiplier: 1

Instrument :
FID_D
ClientSampleId :

Integration File: autoint1.e
Quant Time: Mar 03 00:18:26 2023
Quant Method : Z:\pestpcbsrv\HPCHEM1\FID_D\methods\Aromatic EPH 030123.M
Quant Title : GC Extractables
QLast Update : Wed Mar 01 16:43:59 2023
Response via : Initial Calibration
Integrator: ChemStation

Volume Inj. : 1 μ l
Signal Phase : Rxi-1ms
Signal Info : 20M x 0.18mm x 0.18 μ m

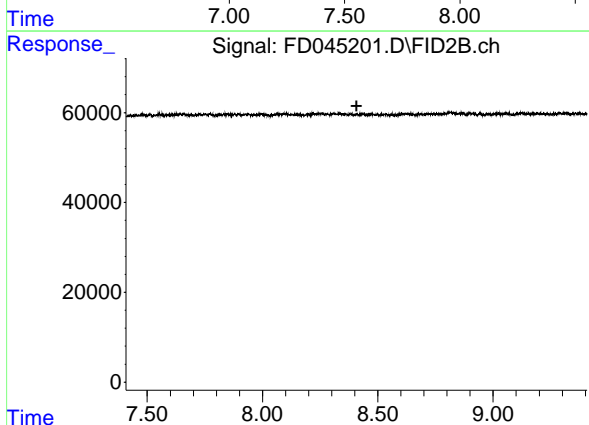




#4 2-Bromonaphthalene (SURR)

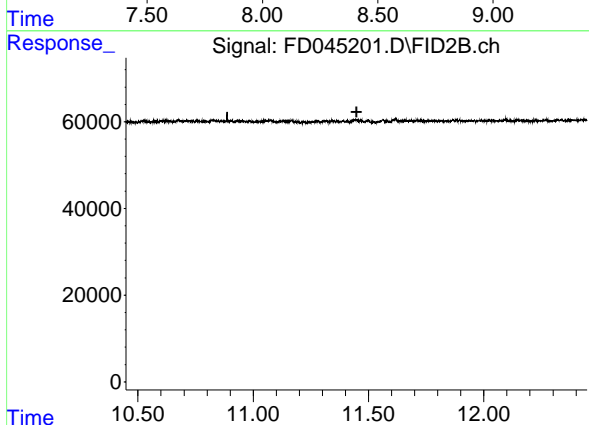
R.T.: 0.000 min
Exp R.T. : 7.552 min
Response: 0
Conc: N.D.

Instrument :
FID_D
ClientSampleId :



#6 2-Fluorobiphenyl (SURR)

R.T.: 0.000 min
Exp R.T. : 8.408 min
Response: 0
Conc: N.D.



#11 ortho-Terphenyl (SURR)

R.T.: 0.000 min
Exp R.T. : 11.448 min
Response: 0
Conc: N.D.