

Data Path : Z:\pestpcbsrv\HPCHEM1\FID\_D\Data\FD030322AL\  
 Data File : FD041367.D  
 Signal(s) : FID2B.CH  
 Acq On : 03 Mar 2022 9:12  
 Operator : UA/NP  
 Sample : MECL2  
 Misc :  
 ALS Vial : 51 Sample Multiplier: 1

Instrument :  
 FID\_D  
 ClientSampleId :  
 MECL2

Integration File: sample.E  
 Quant Time: Mar 04 02:06:18 2022  
 Quant Method : Z:\pestpcbsrv\HPCHEM1\FID\_D\methods\Aliphatic EPH 022322.M  
 Quant Title : GC Extractables  
 QLast Update : Thu Feb 24 01:21:33 2022  
 Response via : Initial Calibration  
 Integrator: ChemStation 6890 Scale Mode: Large solvent peaks clipped

Volume Inj. : 1 ul  
 Signal Phase : Rxi-1ms  
 Signal Info : 20M x 0.18mm x 0.18um

Compound	R.T.	Response	Conc Units
-----			
System Monitoring Compounds			
Target Compounds			
-----			

(f)=RT Delta > 1/2 Window

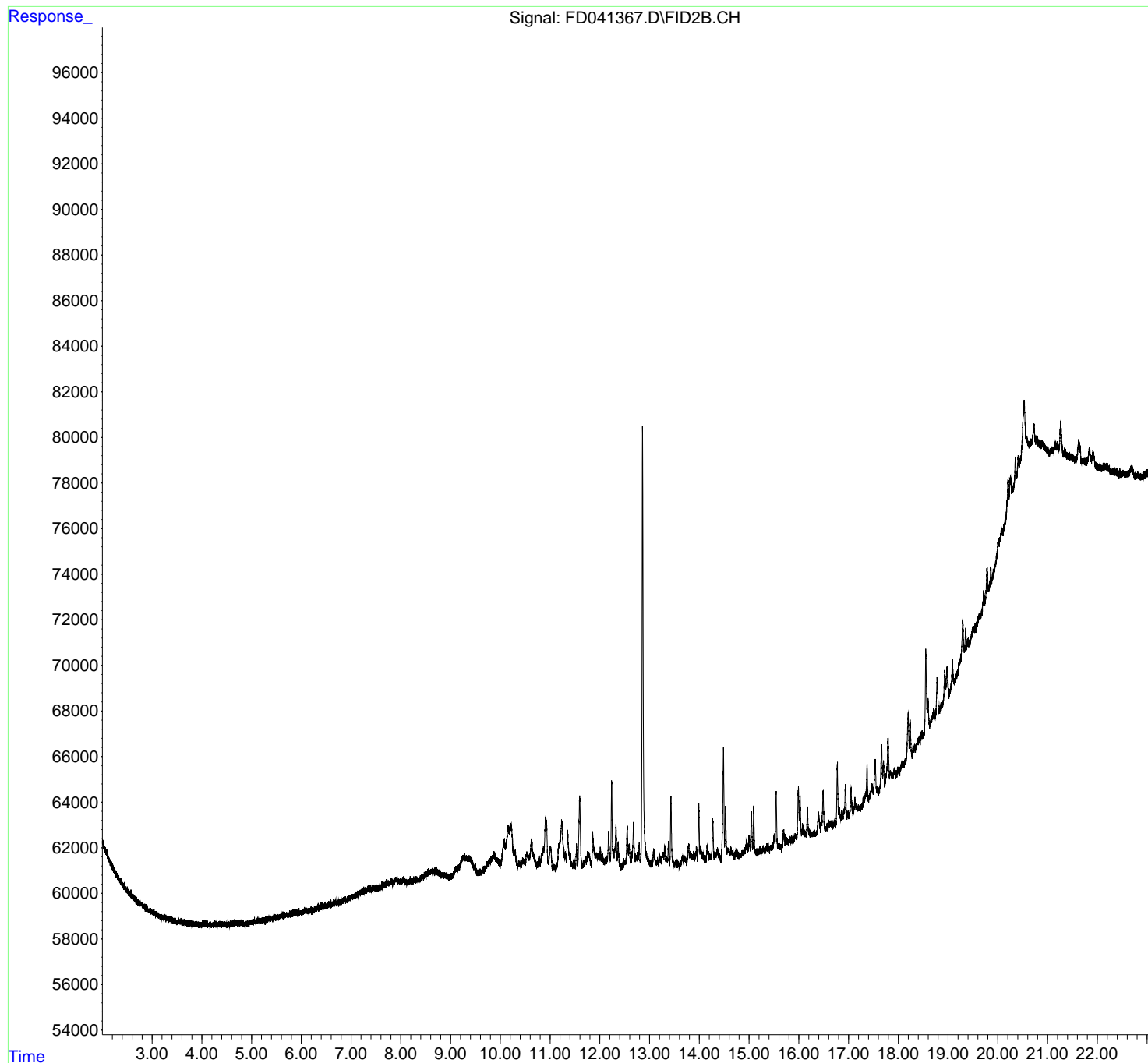
(m)=manual int.

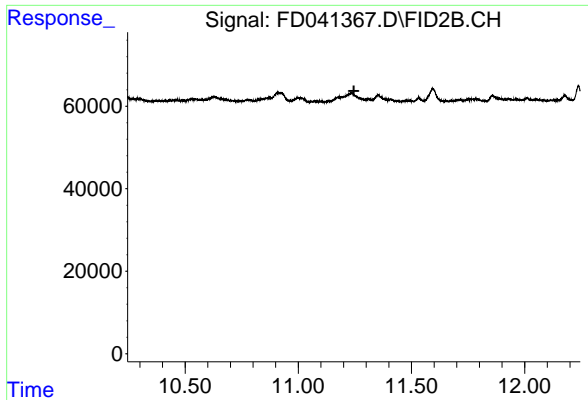
Data Path : Z:\pestpcbsrv\HPCHEM1\FID\_D\Data\FD030322AL\  
Data File : FD041367.D  
Signal(s) : FID2B.CH  
Acq On : 03 Mar 2022 9:12  
Operator : UA/NP  
Sample : MECL2  
Misc :  
ALS Vial : 51 Sample Multiplier: 1

Instrument :  
FID\_D  
ClientSampleId :  
MECL2

Integration File: sample.E  
Quant Time: Mar 04 02:06:18 2022  
Quant Method : Z:\pestpcbsrv\HPCHEM1\FID\_D\methods\Aliphatic EPH 022322.M  
Quant Title : GC Extractables  
QLast Update : Thu Feb 24 01:21:33 2022  
Response via : Initial Calibration  
Integrator: ChemStation 6890 Scale Mode: Large solvent peaks clipped

Volume Inj. : 1 ul  
Signal Phase : Rxi-1ms  
Signal Info : 20M x 0.18mm x 0.18um

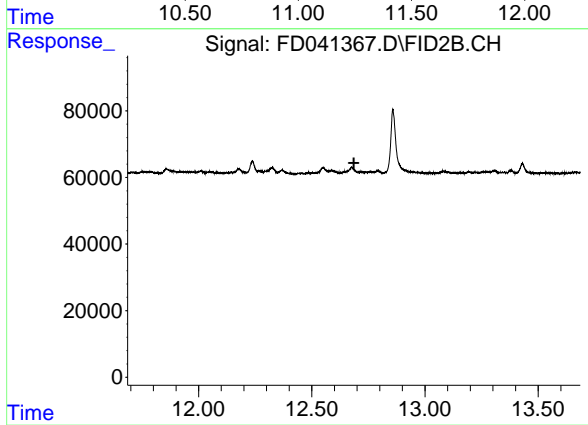




#9 ortho-Terphenyl (SURR)

R.T.: 0.000 min  
Exp R.T. : 11.246 min  
Response: 0  
Conc: N.D.

Instrument :  
FID\_D  
ClientSampleId :  
MECL2



#12 1-chlorooctadecane (SURR)

R.T.: 0.000 min  
Exp R.T. : 12.686 min  
Response: 0  
Conc: N.D.