

Data Path : Z:\pestpcbsrv\HPCHEM1\FID_D\Data\FD030420AL\
 Data File : FD032480.D
 Signal(s) : FID2B.CH
 Acq On : 04 Mar 2020 13:20
 Operator : DD\AJ
 Sample : 100 PPM ALIPHATIC HC STD1
 Misc :
 ALS Vial : 52 Sample Multiplier: 1

Integration File: autoint1.e
 Quant Time: Mar 04 15:19:23 2020
 Quant Method : Z:\pestpcbsrv\HPCHEM1\FID_D\methods\Alaphatic EPH 030420.M
 Quant Title : GC Extractables
 QLast Update : Wed Mar 04 15:17:26 2020
 Response via : Initial Calibration
 Integrator: ChemStation 6890 Scale Mode: Large solvent peaks clipped

Volume Inj. : 1 ul
 Signal Phase : Rxi-1ms
 Signal Info : 20M x 0.18mm x 0.18um

Compound	R.T.	Response	Conc Units

System Monitoring Compounds			
9) S ortho-Terphenyl (SURR)	11.533	14745539	106.307 ug/ml
Spiked Amount	50.000	Recovery	= 212.61%
12) S 1-chlorooctadecane (S...	12.961	11513205	106.284 ug/ml
Spiked Amount	50.000	Recovery	= 212.57%
Target Compounds			
1) T n-Nonane (C9)	3.330	13085335	106.217 ug/ml
2) T n-Decane (C10)	4.392	13184134	106.770 ug/ml
3) T A~Naphthalene (C11.7)	5.968	14787227	107.149 ug/ml
4) T n-Dodecane (C12)	6.400	13478025	107.366 ug/ml
5) T A~2-methylnaphthalene...	7.020	15153549	107.964 ug/ml
6) T n-Tetradecane (C14)	8.187	13627762	106.847 ug/ml
7) T n-Hexadecane (C16)	9.780	13691998	106.472 ug/ml
8) T n-Octadecane (C18)	11.218	13684527	106.145 ug/ml
10) T n-Eicosane (C20)	12.520	13555659	105.747 ug/ml
11) T n-Heneicosane (C21)	13.128	13596442	105.784 ug/ml
13) T n-Docosane (C22)	13.712	13454199	105.619 ug/ml
14) T n-Tetracosane (C24)	14.809	13314012	105.052 ug/ml
15) T n-Hexacosane (C26)	15.825	12963759	104.201 ug/ml
16) T n-Octacosane (C28)	16.770	12503267	103.662 ug/ml
17) T n-Tricontane (C30)	17.653	11737739	102.197 ug/ml
18) T n-Dotriacontane (C32)	18.479	9798424	99.475 ug/ml
19) T n-Tetratriacontane (C34)	19.257	8411351	101.460 ug/ml
20) T n-Hexatriacontane (C36)	19.994	7942834	103.111 ug/ml
21) T n-Octatriacontane (C38)	20.710	7385854	102.917 ug/ml
22) T n-Tetracontane (C40)	21.577	7612389	84.260 ug/ml

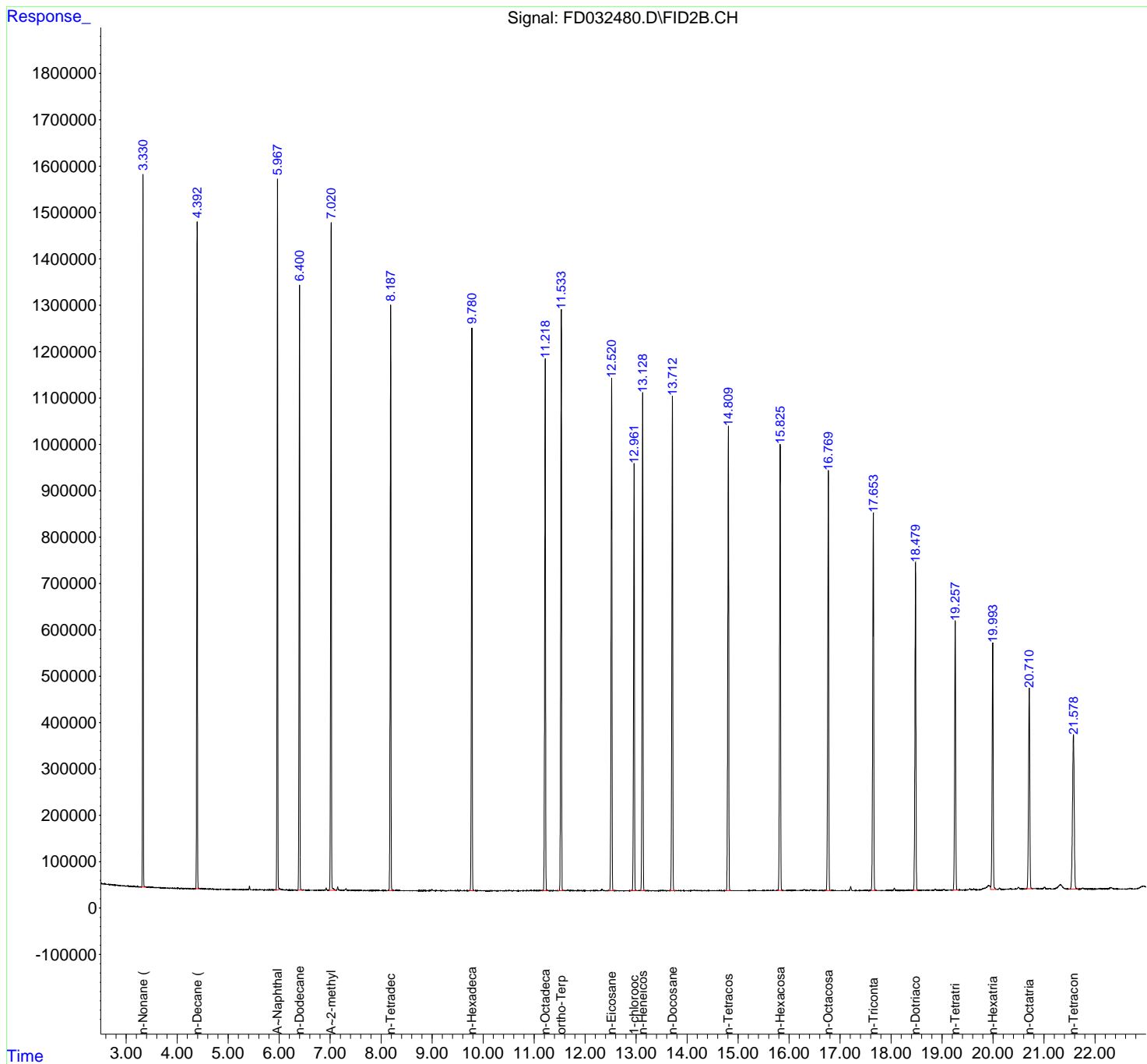
(f)=RT Delta > 1/2 Window

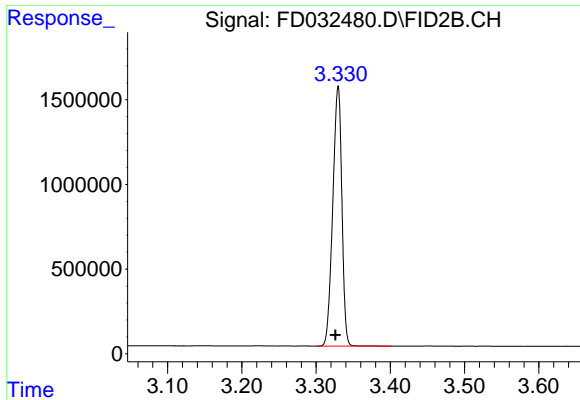
(m)=manual int.

Data Path : Z:\pestpcbsrv\HPCHEM1\FID_D\Data\FD030420AL\
 Data File : FD032480.D
 Signal(s) : FID2B.CH
 Acq On : 04 Mar 2020 13:20
 Operator : DD\AJ
 Sample : 100 PPM ALIPHATIC HC STD1
 Misc :
 ALS Vial : 52 Sample Multiplier: 1

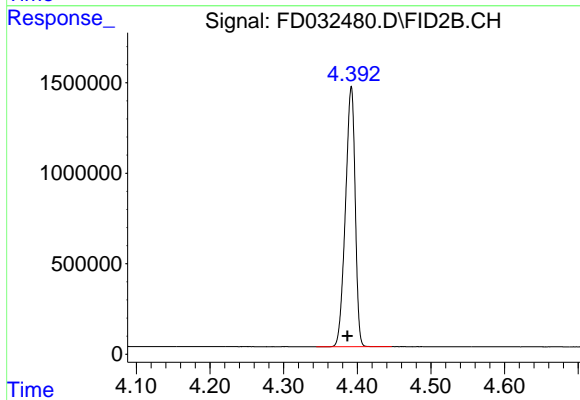
Integration File: autoint1.e
 Quant Time: Mar 04 15:19:23 2020
 Quant Method : Z:\pestpcbsrv\HPCHEM1\FID_D\methods\Alaphatic EPH 030420.M
 Quant Title : GC Extractables
 QLast Update : Wed Mar 04 15:17:26 2020
 Response via : Initial Calibration
 Integrator: ChemStation 6890 Scale Mode: Large solvent peaks clipped

Volume Inj. : 1 ul
 Signal Phase : Rxi-1ms
 Signal Info : 20M x 0.18mm x 0.18um

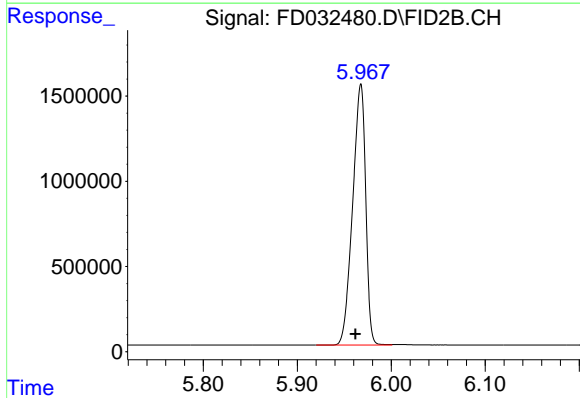




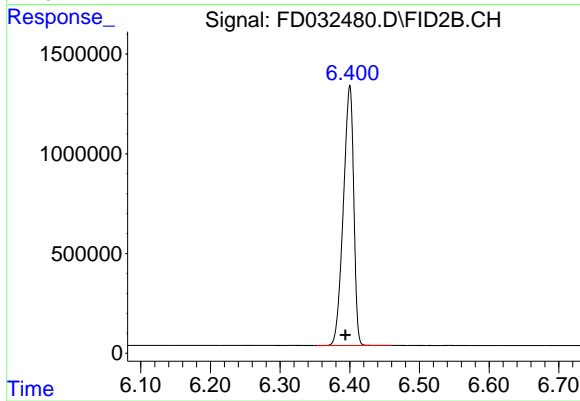
#1 n-Nonane (C9)
R.T.: 3.330 min
Delta R.T.: 0.004 min
Response: 13085335
Conc: 106.22 ug/ml



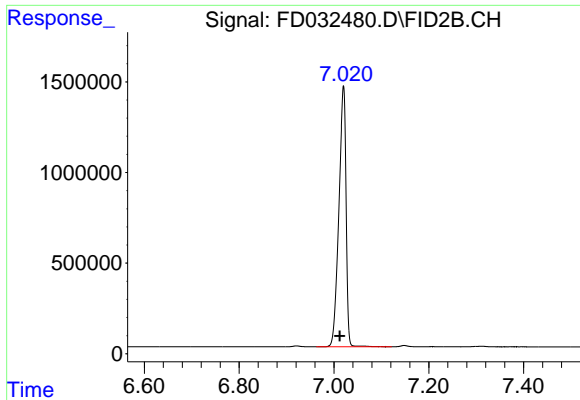
#2 n-Decane (C10)
R.T.: 4.392 min
Delta R.T.: 0.005 min
Response: 13184134
Conc: 106.77 ug/ml



#3 A~Naphthalene (C11.7)
R.T.: 5.968 min
Delta R.T.: 0.006 min
Response: 14787227
Conc: 107.15 ug/ml

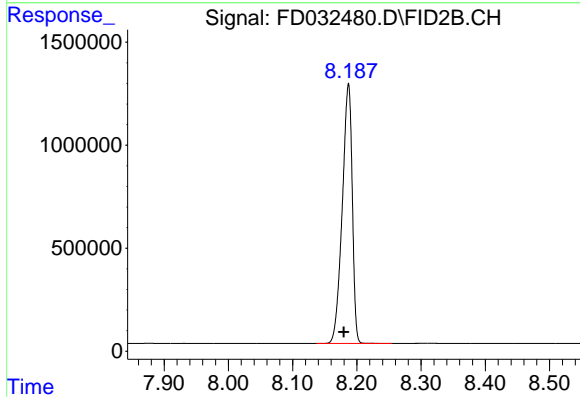


#4 n-Dodecane (C12)
R.T.: 6.400 min
Delta R.T.: 0.006 min
Response: 13478025
Conc: 107.37 ug/ml



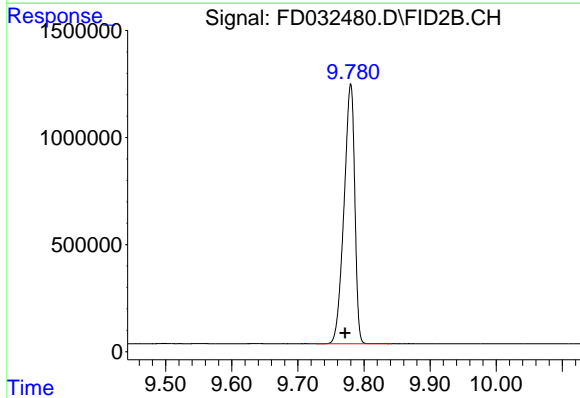
#5 A~2-methylnaphthalene (C12.89)

R.T.: 7.020 min
Delta R.T.: 0.008 min
Response: 15153549
Conc: 107.96 ug/ml



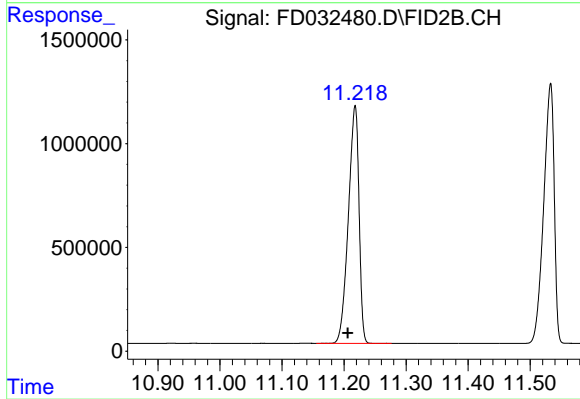
#6 n-Tetradecane (C14)

R.T.: 8.187 min
Delta R.T.: 0.008 min
Response: 13627762
Conc: 106.85 ug/ml



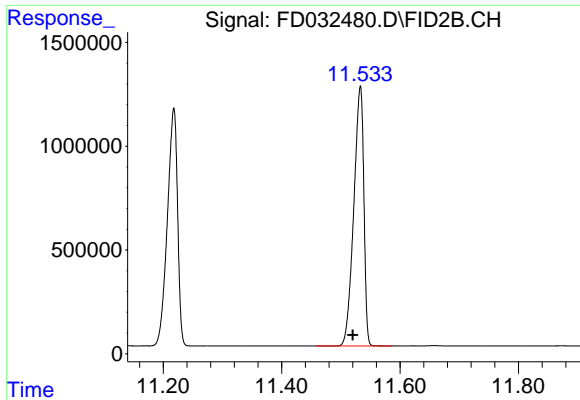
#7 n-Hexadecane (C16)

R.T.: 9.780 min
Delta R.T.: 0.008 min
Response: 13691998
Conc: 106.47 ug/ml



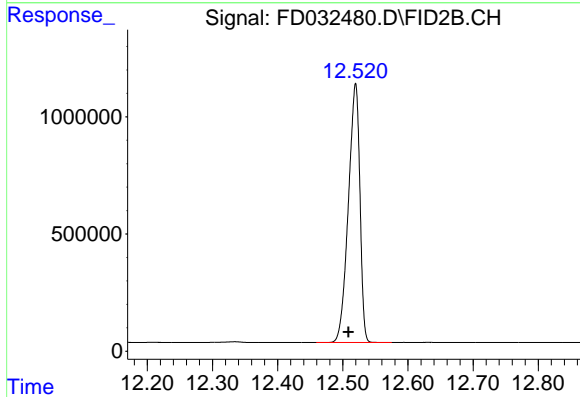
#8 n-Octadecane (C18)

R.T.: 11.218 min
Delta R.T.: 0.012 min
Response: 13684527
Conc: 106.15 ug/ml



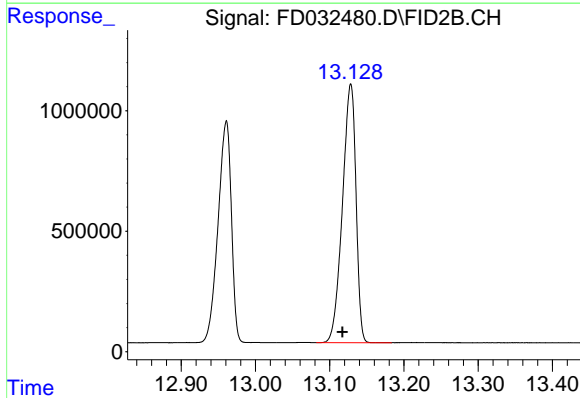
#9 ortho-Terphenyl (SURR)

R.T.: 11.533 min
Delta R.T.: 0.013 min
Response: 14745539
Conc: 106.31 ug/ml



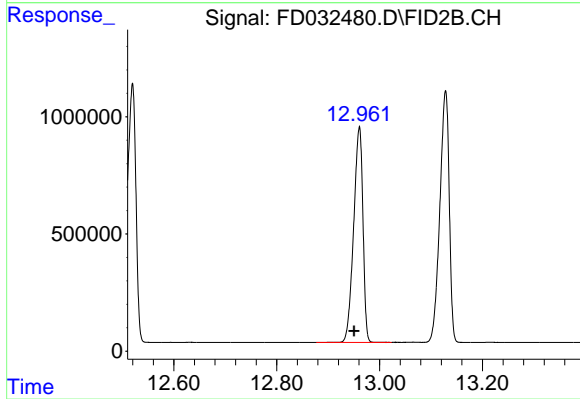
#10 n-Eicosane (C20)

R.T.: 12.520 min
Delta R.T.: 0.011 min
Response: 13555659
Conc: 105.75 ug/ml



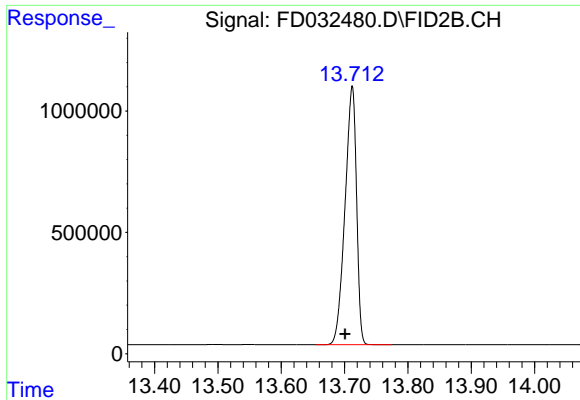
#11 n-Heneicosane (C21)

R.T.: 13.128 min
Delta R.T.: 0.011 min
Response: 13596442
Conc: 105.78 ug/ml



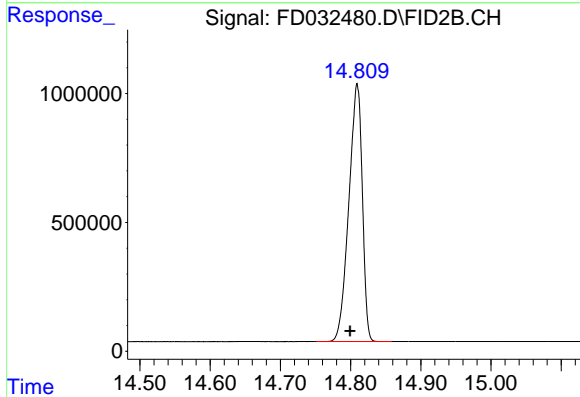
#12 1-chlorooctadecane (SURR)

R.T.: 12.961 min
Delta R.T.: 0.010 min
Response: 11513205
Conc: 106.28 ug/ml



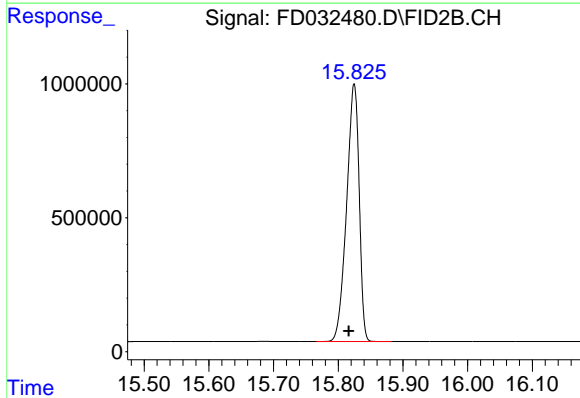
#13 n-Docosane (C22)

R.T.: 13.712 min
Delta R.T.: 0.011 min
Response: 13454199
Conc: 105.62 ug/ml



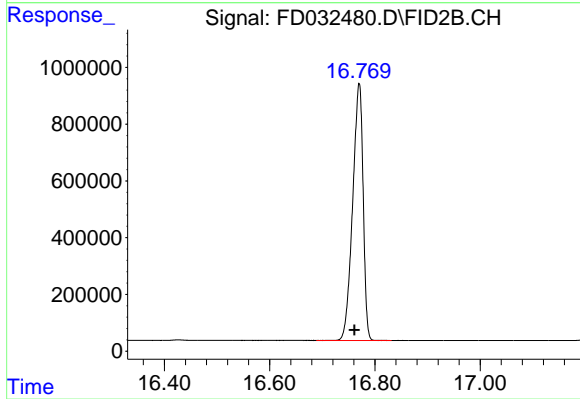
#14 n-Tetracosane (C24)

R.T.: 14.809 min
Delta R.T.: 0.010 min
Response: 13314012
Conc: 105.05 ug/ml



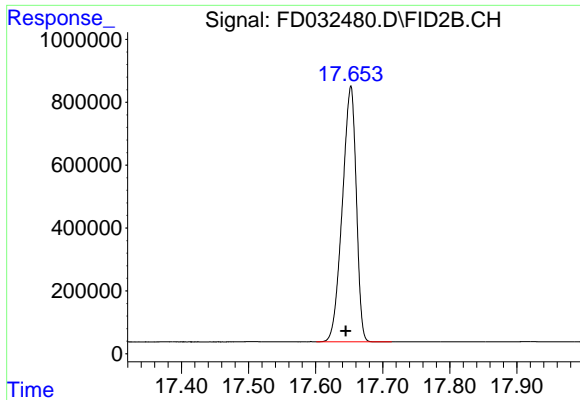
#15 n-Hexacosane (C26)

R.T.: 15.825 min
Delta R.T.: 0.008 min
Response: 12963759
Conc: 104.20 ug/ml

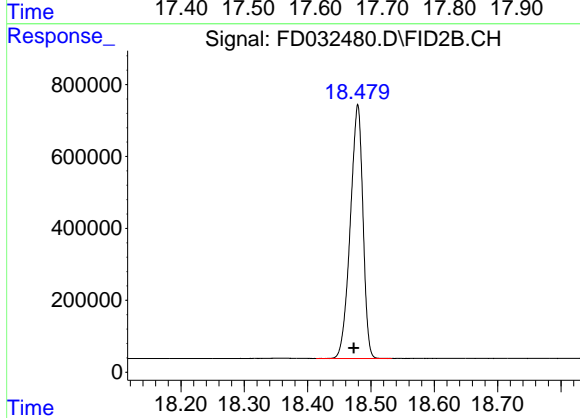


#16 n-Octacosane (C28)

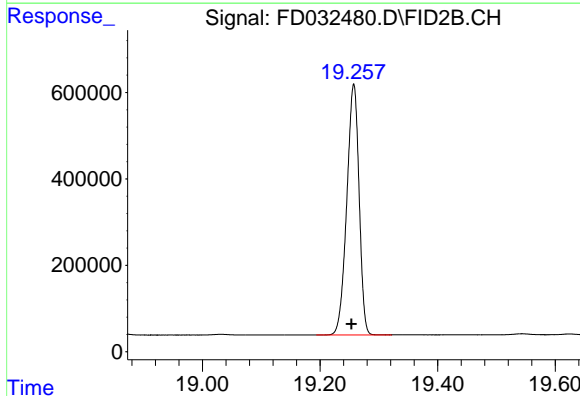
R.T.: 16.770 min
Delta R.T.: 0.009 min
Response: 12503267
Conc: 103.66 ug/ml



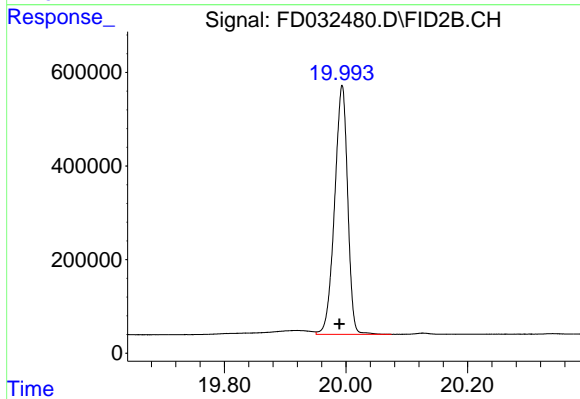
#17 n-Tricontane (C30)
R.T.: 17.653 min
Delta R.T.: 0.007 min
Response: 11737739
Conc: 102.20 ug/ml



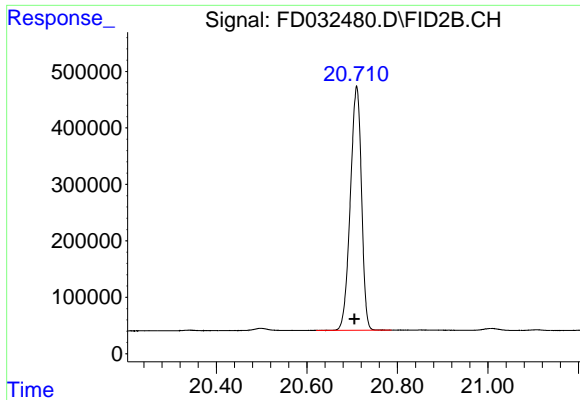
#18 n-Dotriacontane (C32)
R.T.: 18.479 min
Delta R.T.: 0.006 min
Response: 9798424
Conc: 99.48 ug/ml



#19 n-Tetratriacontane (C34)
R.T.: 19.257 min
Delta R.T.: 0.004 min
Response: 8411351
Conc: 101.46 ug/ml

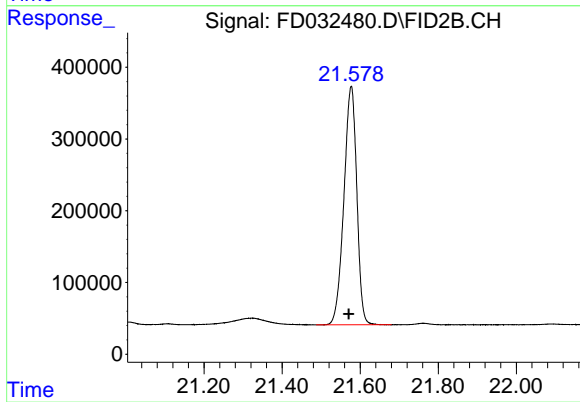


#20 n-Hexatriacontane (C36)
R.T.: 19.994 min
Delta R.T.: 0.005 min
Response: 7942834
Conc: 103.11 ug/ml



#21 n-Octatriacontane (C38)

R.T.: 20.710 min
Delta R.T.: 0.005 min
Response: 7385854
Conc: 102.92 ug/ml



#22 n-Tetracontane (C40)

R.T.: 21.577 min
Delta R.T.: 0.007 min
Response: 7612389
Conc: 84.26 ug/ml