

Data Path : Z:\pestpcbsrv\HPCHEM1\FID_D\Data\FD030722AL\
 Data File : FD041419.D
 Signal(s) : FID2B.CH
 Acq On : 07 Mar 2022 21:13
 Operator : UA/NP
 Sample : N1806-08
 Misc :
 ALS Vial : 62 Sample Multiplier: 1

Integration File: autoint1.e
 Quant Time: Mar 08 02:43:00 2022
 Quant Method : Z:\pestpcbsrv\HPCHEM1\FID_D\methods\Aliphatic EPH 022322.M
 Quant Title : GC Extractables
 QLast Update : Thu Feb 24 01:21:33 2022
 Response via : Initial Calibration
 Integrator: ChemStation 6890 Scale Mode: Large solvent peaks clipped

Volume Inj. : 1 ul
 Signal Phase : Rxi-1ms
 Signal Info : 20M x 0.18mm x 0.18um

Compound	R.T.	Response	Conc Units

System Monitoring Compounds			
9) S ortho-Terphenyl (SURR)	11.245	6083851	35.073 ug/ml
Spiked Amount	50.000	Recovery	= 70.15%
12) S 1-chlorooctadecane (S...	12.684	4750359	35.088 ug/ml
Spiked Amount	50.000	Recovery	= 70.18%
Target Compounds			
10) T n-Eicosane (C20)	12.270	549965	3.543 ug/ml
14) T n-Tetracosane (C24)	14.591f	51541	0.329 ug/ml
16) T n-Octacosane (C28)	16.458	3889	0.026 ug/ml
17) T n-Tricontane (C30)	17.375	58451	0.415 ug/ml
18) T n-Dotriacontane (C32)	18.200	58026	0.456 ug/ml
19) T n-Tetratriacontane (C34)	19.007	179252	1.574 ug/ml

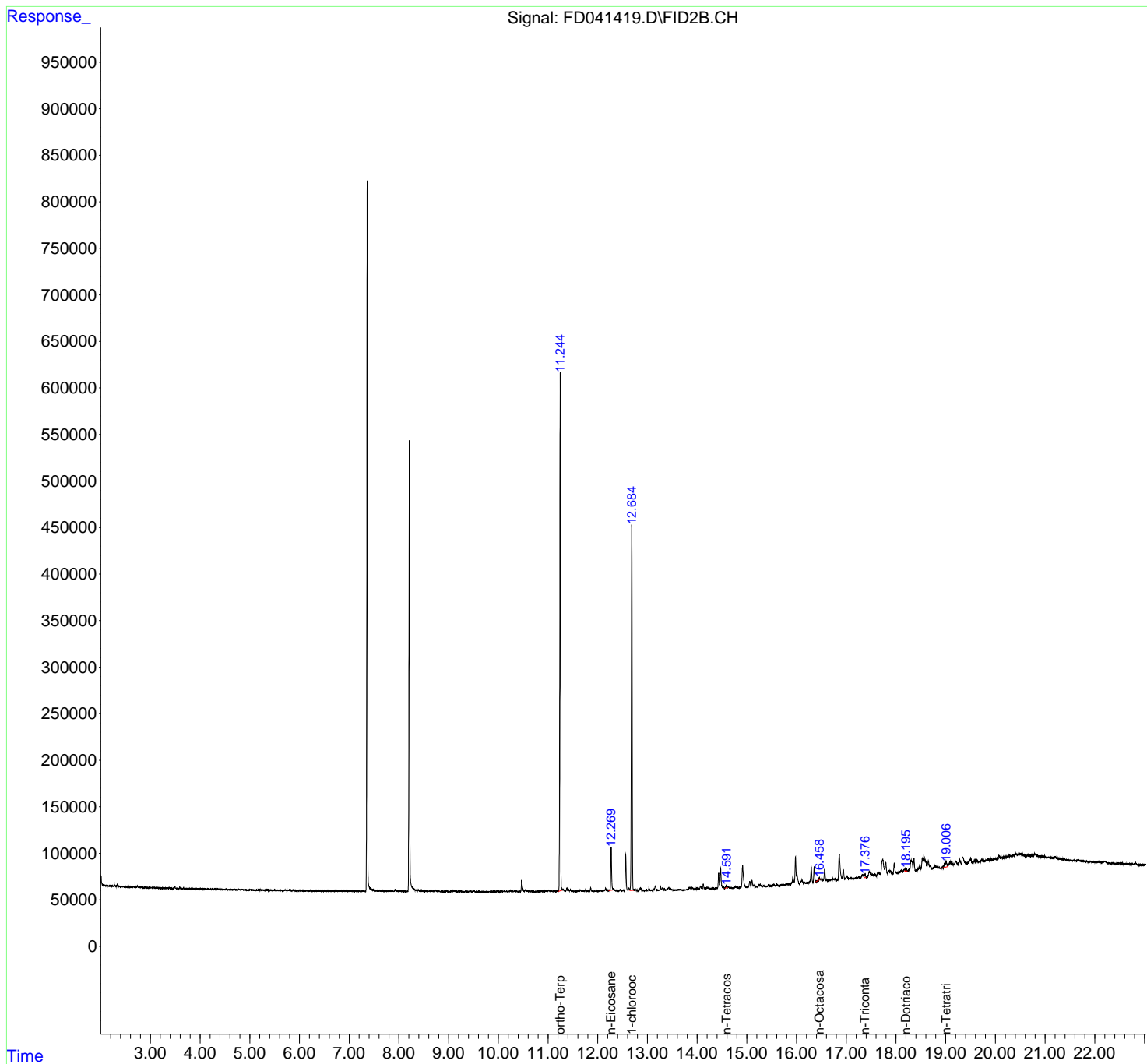
(f)=RT Delta > 1/2 Window

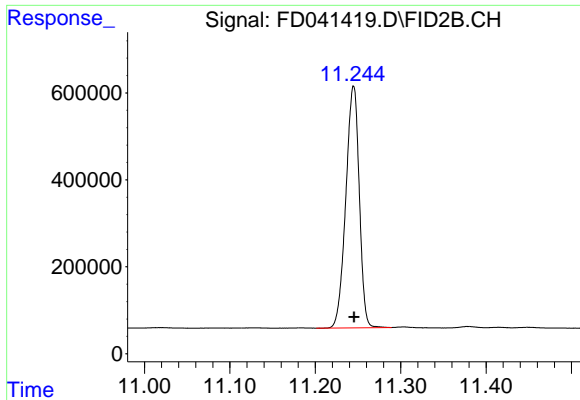
(m)=manual int.

Data Path : Z:\pestpcbsrv\HPCHEM1\FID_D\Data\FD030722AL\
Data File : FD041419.D
Signal(s) : FID2B.CH
Acq On : 07 Mar 2022 21:13
Operator : UA/NP
Sample : N1806-08
Misc :
ALS Vial : 62 Sample Multiplier: 1

Integration File: autoint1.e
Quant Time: Mar 08 02:43:00 2022
Quant Method : Z:\pestpcbsrv\HPCHEM1\FID_D\methods\Aliphatic EPH 022322.M
Quant Title : GC Extractables
QLast Update : Thu Feb 24 01:21:33 2022
Response via : Initial Calibration
Integrator: ChemStation 6890 Scale Mode: Large solvent peaks clipped

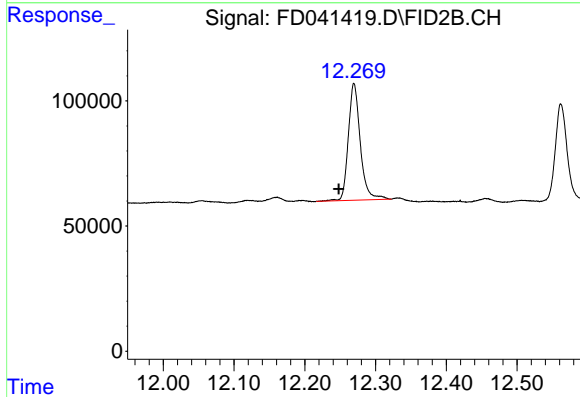
Volume Inj. : 1 ul
Signal Phase : Rxi-1ms
Signal Info : 20M x 0.18mm x 0.18um





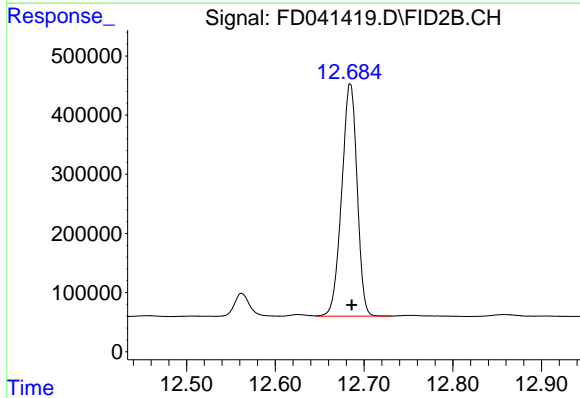
#9 ortho-Terphenyl (SURR)

R.T.: 11.245 min
Delta R.T.: 0.000 min
Response: 6083851
Conc: 35.07 ug/ml



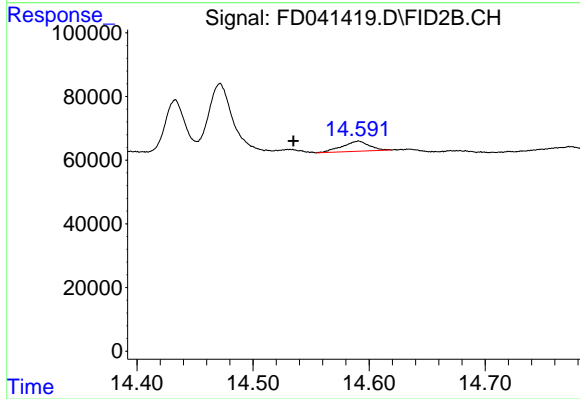
#10 n-Eicosane (C20)

R.T.: 12.270 min
Delta R.T.: 0.022 min
Response: 549965
Conc: 3.54 ug/ml



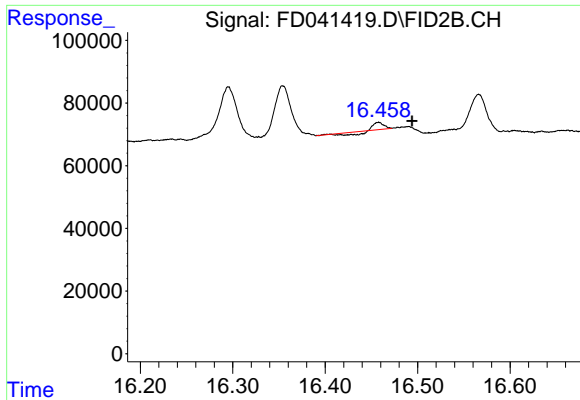
#12 1-chlorooctadecane (SURR)

R.T.: 12.684 min
Delta R.T.: -0.002 min
Response: 4750359
Conc: 35.09 ug/ml

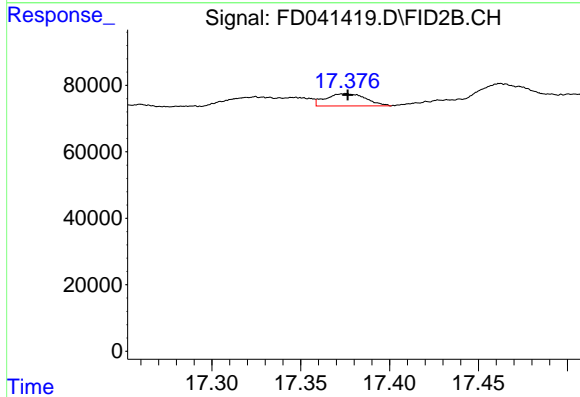


#14 n-Tetracosane (C24)

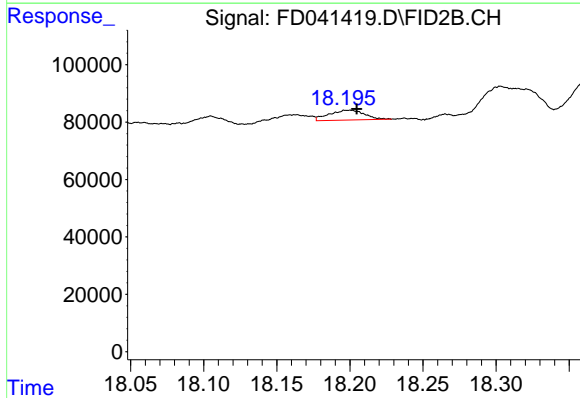
R.T.: 14.591 min
Delta R.T.: 0.056 min
Response: 51541
Conc: 0.33 ug/ml



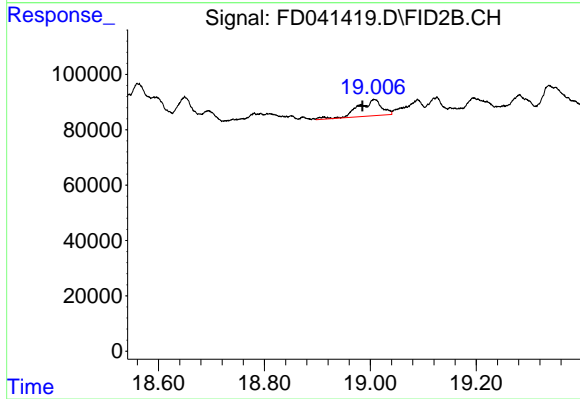
#16 n-Octacosane (C28)
 R.T.: 16.458 min
 Delta R.T.: -0.036 min
 Response: 3889
 Conc: 0.03 ug/ml



#17 n-Tricontane (C30)
 R.T.: 17.375 min
 Delta R.T.: -0.001 min
 Response: 58451
 Conc: 0.42 ug/ml



#18 n-Dotriacontane (C32)
 R.T.: 18.200 min
 Delta R.T.: -0.005 min
 Response: 58026
 Conc: 0.46 ug/ml



#19 n-Tetratriacontane (C34)
 R.T.: 19.007 min
 Delta R.T.: 0.023 min
 Response: 179252
 Conc: 1.57 ug/ml