

Data Path : Z:\pestpcbsrv\HPCHEM1\FID\_D\Data\FD031120AR\  
 Data File : FD032581.D  
 Signal(s) : FID2B.CH  
 Acq On : 11 Mar 2020 13:52  
 Operator : DD\AJ  
 Sample : 20 PPM AROMATIC HC STD  
 Misc :  
 ALS Vial : 52 Sample Multiplier: 1

Instrument :  
 FID\_D  
 ClientSampleId :  
 20 PPM AROMATIC HC STD

Integration File: autoint1.e  
 Quant Time: Mar 12 01:19:26 2020  
 Quant Method : Z:\pestpcbsrv\HPCHEM1\FID\_D\methods\Aromatic EPH 030320.M  
 Quant Title : GC Extractables  
 QLast Update : Wed Mar 04 03:14:19 2020  
 Response via : Initial Calibration  
 Integrator: ChemStation 6890 Scale Mode: Large solvent peaks clipped

Volume Inj. : 1 µl  
 Signal Phase : Rxi-1ms  
 Signal Info : 20M x 0.18mm x 0.18µm

Compound	R.T.	Response	Conc Units
-----			
System Monitoring Compounds			
4) S 2-Bromonaphthalene (S...	7.619	2371513	18.349 ug/ml
Spiked Amount 50.000		Recovery =	36.70%
6) S 2-Fluorobiphenyl (SURR)	8.480	1541183	17.458 ug/ml
Spiked Amount 50.000 Range 0 - 131		Recovery =	34.92%
11) S ortho-Terphenyl (SURR)	11.516	2414315	17.412 ug/ml
Spiked Amount 50.000		Recovery =	34.82%
Target Compounds			
1) T 1,2,3-Trimethylbenzen...	4.424	2684345	20.180 ug/ml
2) T Naphthalene (C11.7)	5.960	2709851	19.072 ug/ml
3) T 2-Methylnaphthalene (...)	7.010	2628003	18.513 ug/ml
5) T Acenaphthylene (C15.06)	8.283	2440585	17.842 ug/ml
7) T Acenaphthene (C15.5)	8.578	2555546	18.100 ug/ml
8) T Flouorene (C16.55)	9.357	2437231	17.386 ug/ml
9) T Phenanthrene (C19.36)	10.752	2380556	17.035 ug/ml
10) T Anthracene (C19.43)	10.826	2156245	15.401 ug/ml
12) T Fluoranthene (C21.85)	12.562	2311379	16.480 ug/ml
13) T Pyrene (C20.8)	12.859	2285255	16.621 ug/ml
14) T Benzo[a]anthracene (C...	14.729	2137192	16.378 ug/ml
15) T Chrysene (C27.41)	14.770	2218225	16.478 ug/ml
16) T benzo[b]fluoranthene ...	16.279	2210454	17.230 ug/ml
17) T Bnezo[k]fluoranthene ...	16.311	2218773	16.902 ug/ml
18) T Benzo[a]pyrene (C31.34)	16.658	2190449	17.195 ug/ml
19) T Indeno[1,2,3-cd]pyren...	18.024	2185582	18.341 ug/ml
20) T Dibenz[a,h]anthracene...	18.062	2261136	17.883 ug/ml
21) T Benzo[g,h,i]perylene ...	18.278	2209567	18.691 ug/ml
-----			

(f)=RT Delta > 1/2 Window

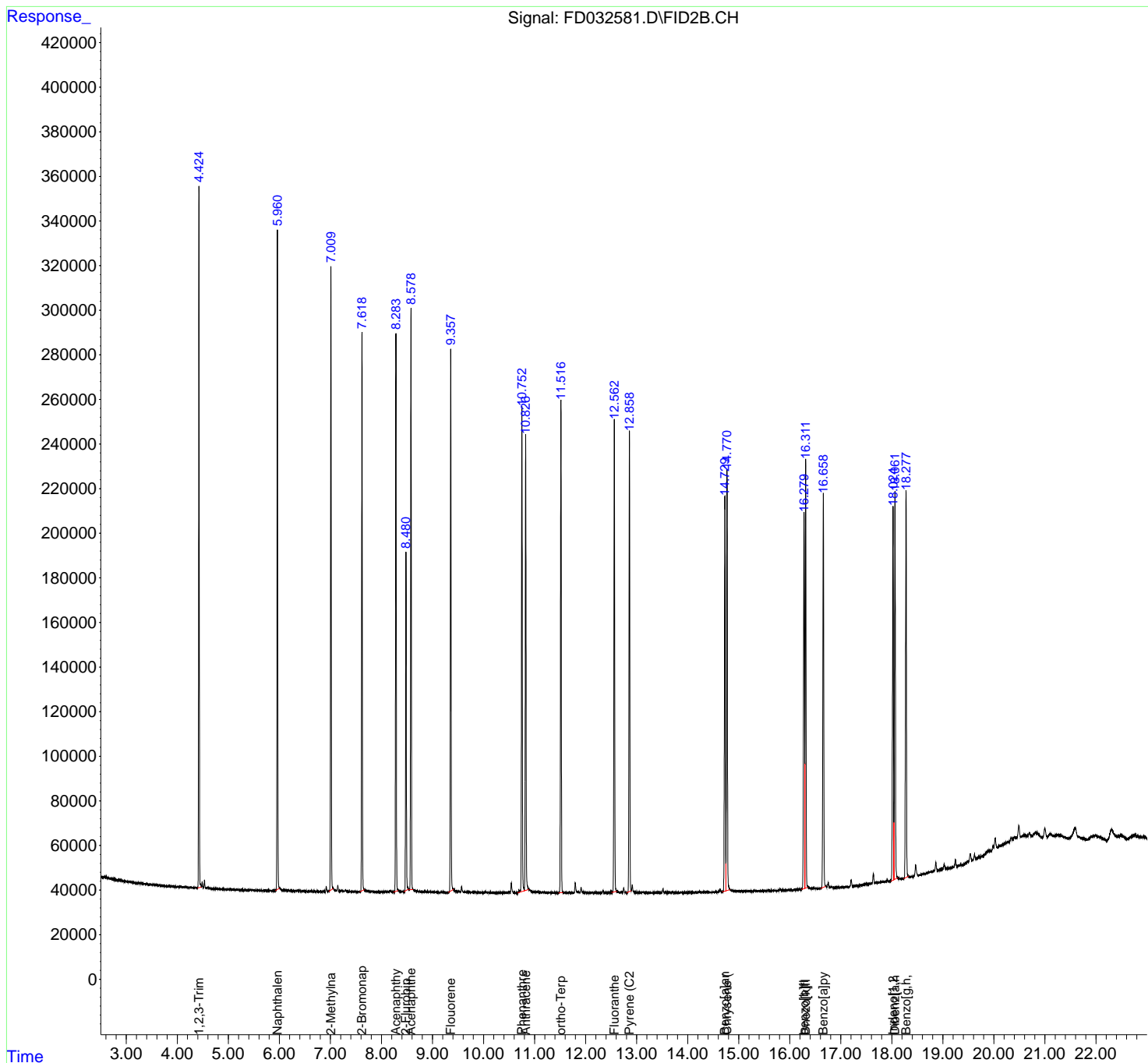
(m)=manual int.

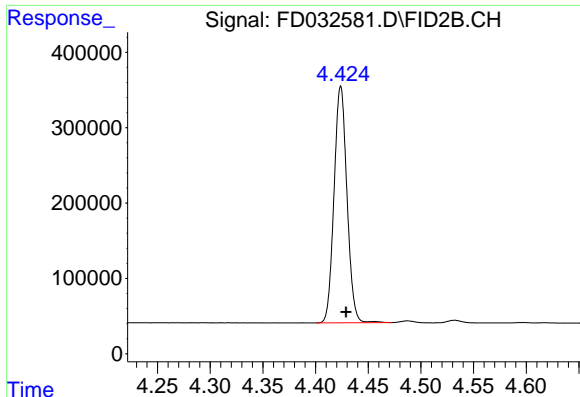
Data Path : Z:\pestpcbsrv\HPCHEM1\FID\_D\Data\FD031120AR\  
 Data File : FD032581.D  
 Signal(s) : FID2B.CH  
 Acq On : 11 Mar 2020 13:52  
 Operator : DD\AJ  
 Sample : 20 PPM AROMATIC HC STD  
 Misc :  
 ALS Vial : 52 Sample Multiplier: 1

Instrument :  
 FID\_D  
 ClientSampleId :  
 20 PPM AROMATIC HC STD

Integration File: autoint1.e  
 Quant Time: Mar 12 01:19:26 2020  
 Quant Method : Z:\pestpcbsrv\HPCHEM1\FID\_D\methods\Aromatic EPH 030320.M  
 Quant Title : GC Extractables  
 QLast Update : Wed Mar 04 03:14:19 2020  
 Response via : Initial Calibration  
 Integrator: ChemStation 6890 Scale Mode: Large solvent peaks clipped

Volume Inj. : 1 µl  
 Signal Phase : Rxi-1ms  
 Signal Info : 20M x 0.18mm x 0.18µm

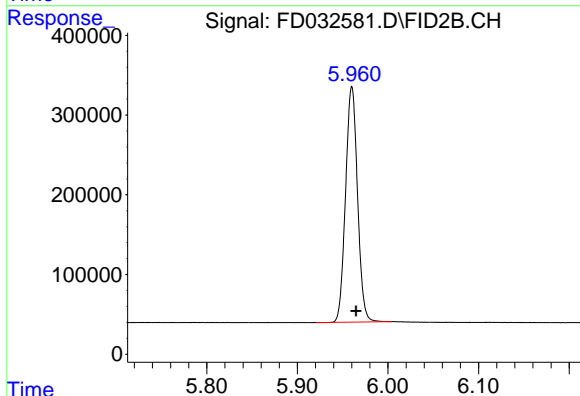




#1 1,2,3-Trimethylbenzene (C10.1)

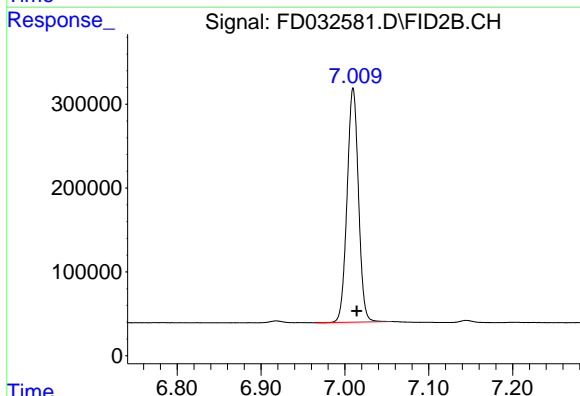
R.T.: 4.424 min  
Delta R.T.: -0.005 min  
Response: 2684345  
Conc: 20.18 ug/ml

Instrument :  
FID\_D  
ClientSampleId :  
20 PPM AROMATIC HC STD



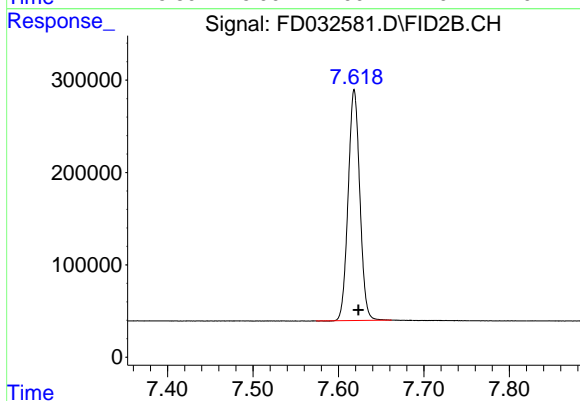
#2 Naphthalene (C11.7)

R.T.: 5.960 min  
Delta R.T.: -0.005 min  
Response: 2709851  
Conc: 19.07 ug/ml



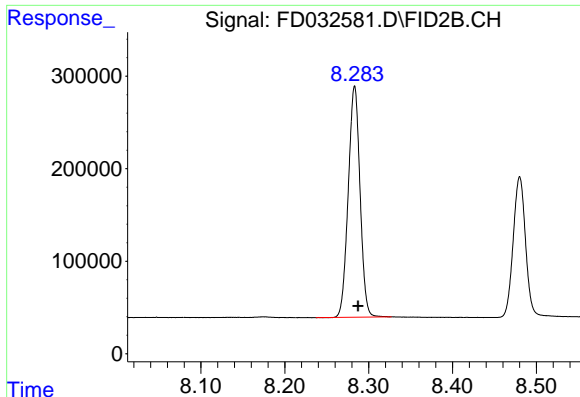
#3 2-Methylnaphthalene (C12.89)

R.T.: 7.010 min  
Delta R.T.: -0.004 min  
Response: 2628003  
Conc: 18.51 ug/ml



#4 2-Bromonaphthalene (SURR)

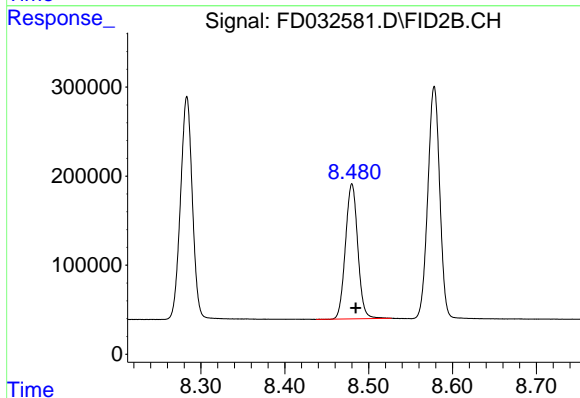
R.T.: 7.619 min  
Delta R.T.: -0.005 min  
Response: 2371513  
Conc: 18.35 ug/ml



#5 Acenaphthylene (C15.06)

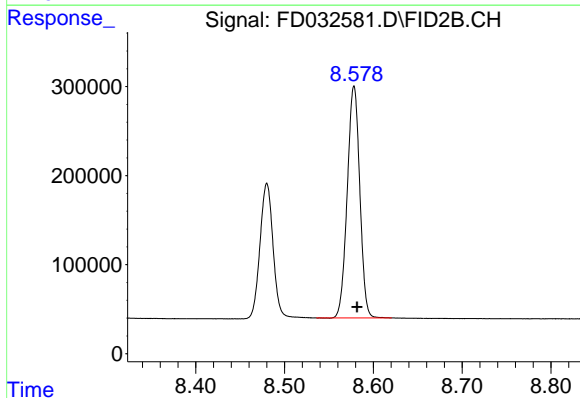
R.T.: 8.283 min  
Delta R.T.: -0.004 min  
Response: 2440585  
Conc: 17.84 ug/ml

Instrument :  
FID\_D  
ClientSampleId :  
20 PPM AROMATIC HC STD



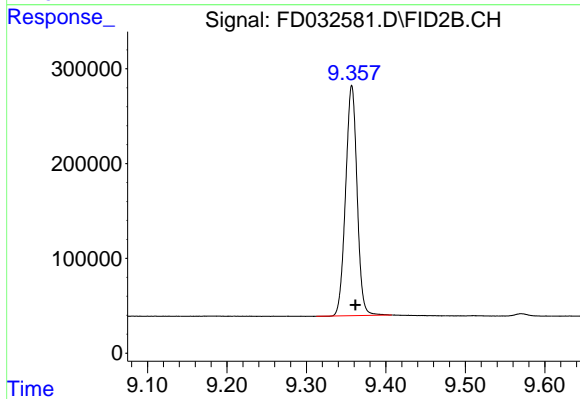
#6 2-Fluorobiphenyl (SURR)

R.T.: 8.480 min  
Delta R.T.: -0.004 min  
Response: 1541183  
Conc: 17.46 ug/ml



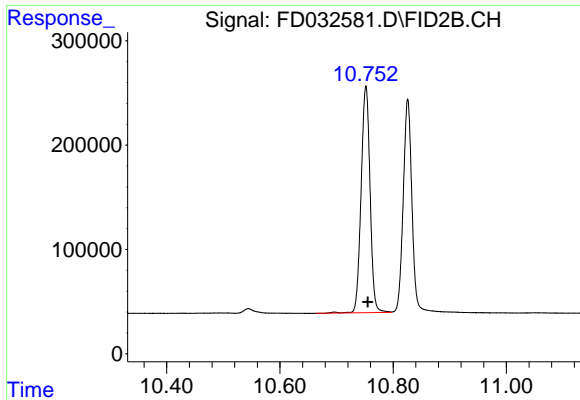
#7 Acenaphthene (C15.5)

R.T.: 8.578 min  
Delta R.T.: -0.003 min  
Response: 2555546  
Conc: 18.10 ug/ml



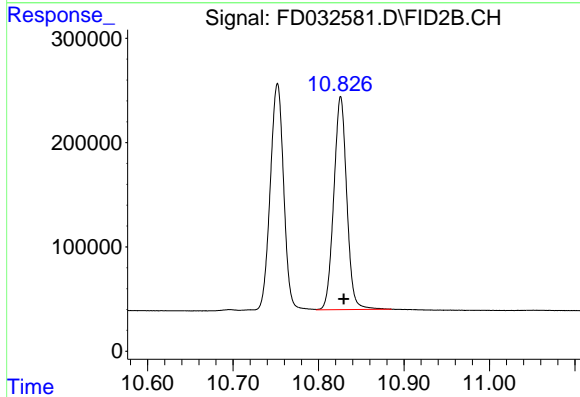
#8 Fluorene (C16.55)

R.T.: 9.357 min  
Delta R.T.: -0.005 min  
Response: 2437231  
Conc: 17.39 ug/ml

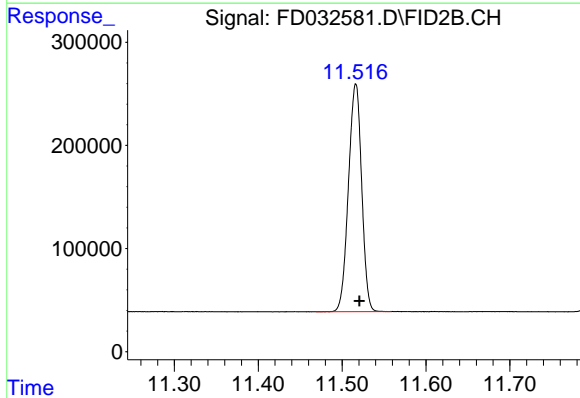


#9 Phenanthrene (C19.36)  
R.T.: 10.752 min  
Delta R.T.: -0.003 min  
Response: 2380556  
Conc: 17.03 ug/ml

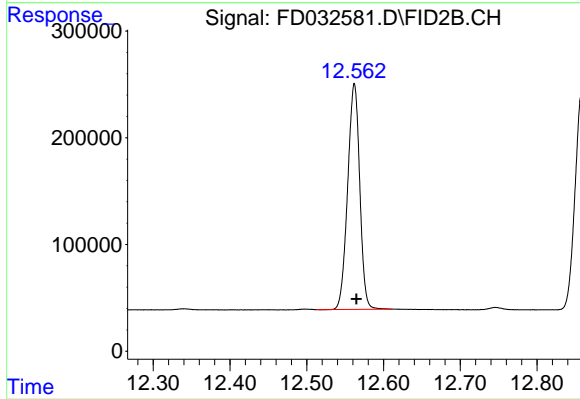
Instrument :  
FID\_D  
ClientSampled :  
20 PPM AROMATIC HC STD



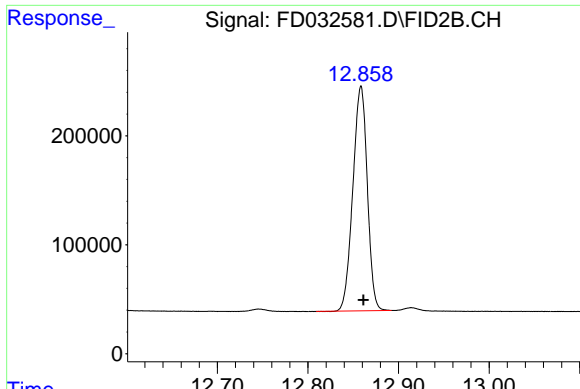
#10 Anthracene (C19.43)  
R.T.: 10.826 min  
Delta R.T.: -0.003 min  
Response: 2156245  
Conc: 15.40 ug/ml



#11 ortho-Terphenyl (SURR)  
R.T.: 11.516 min  
Delta R.T.: -0.004 min  
Response: 2414315  
Conc: 17.41 ug/ml



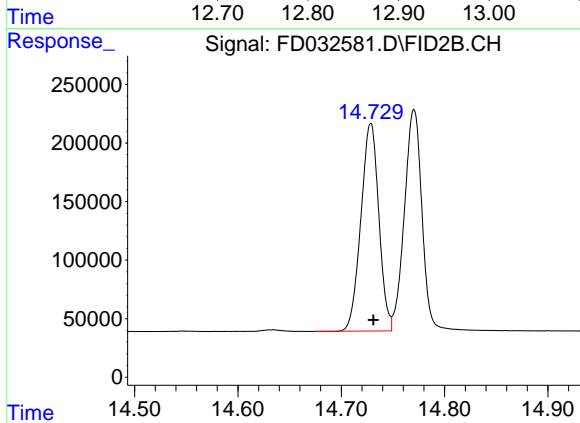
#12 Fluoranthene (C21.85)  
R.T.: 12.562 min  
Delta R.T.: -0.003 min  
Response: 2311379  
Conc: 16.48 ug/ml



#13 Pyrene (C20.8)

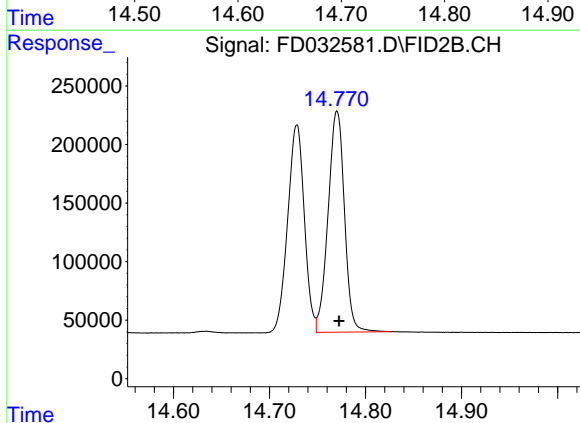
R.T.: 12.859 min  
 Delta R.T.: -0.003 min  
 Response: 2285255  
 Conc: 16.62 ug/ml

Instrument :  
 FID\_D  
 ClientSampleId :  
 20 PPM AROMATIC HC STD



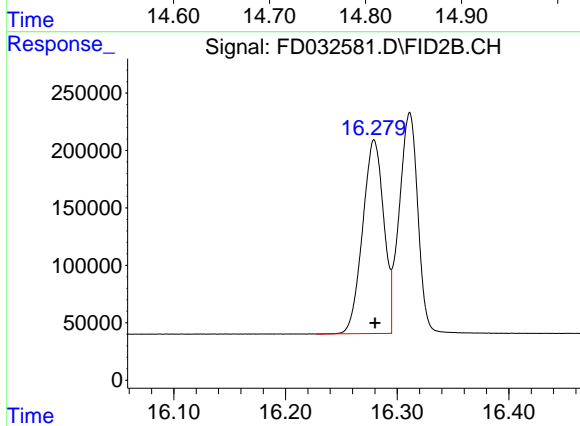
#14 Benzo[a]anthracene (C26.37)

R.T.: 14.729 min  
 Delta R.T.: -0.003 min  
 Response: 2137192  
 Conc: 16.38 ug/ml



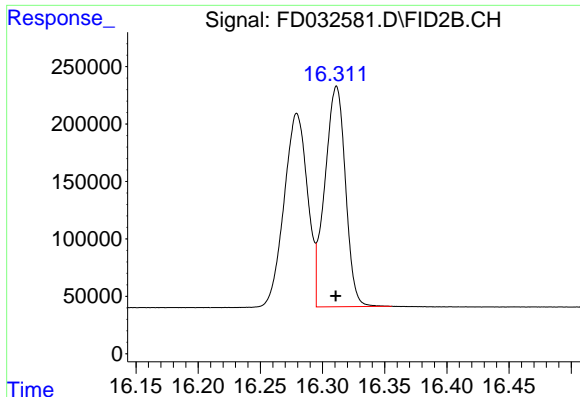
#15 Chrysene (C27.41)

R.T.: 14.770 min  
 Delta R.T.: -0.002 min  
 Response: 2218225  
 Conc: 16.48 ug/ml



#16 benzo[b]fluoranthene (C30.41)

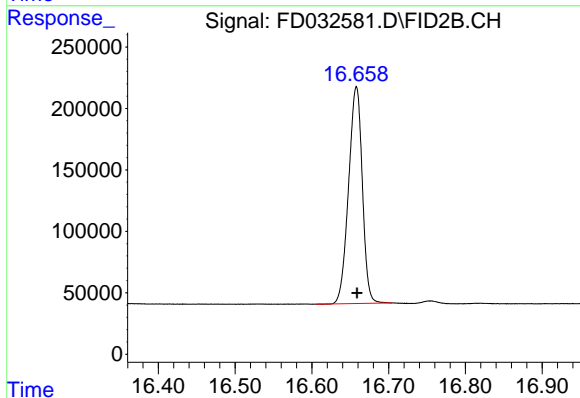
R.T.: 16.279 min  
 Delta R.T.: 0.000 min  
 Response: 2210454  
 Conc: 17.23 ug/ml



#17 Bnezo[k]fluoranthene (C30.14)

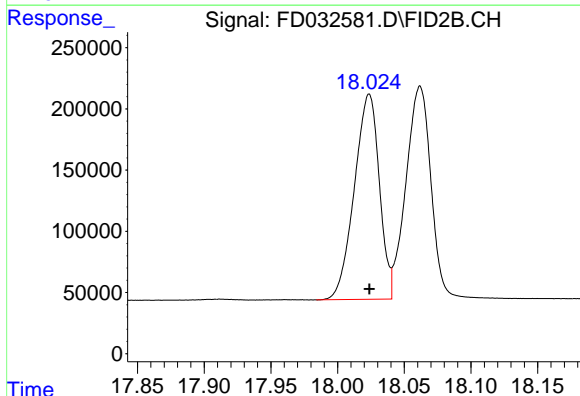
R.T.: 16.311 min  
Delta R.T.: 0.000 min  
Response: 2218773  
Conc: 16.90 ug/ml

Instrument :  
FID\_D  
ClientSampleId :  
20 PPM AROMATIC HC STD



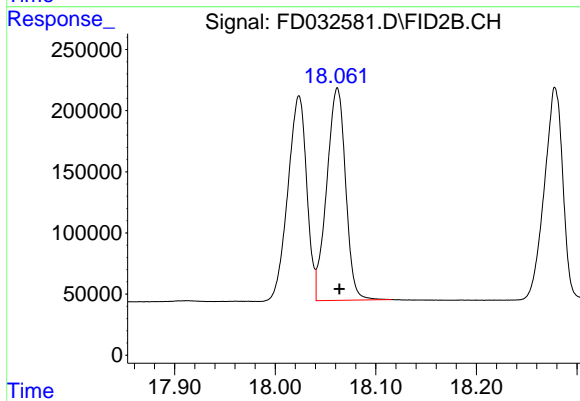
#18 Benzo[a]pyrene (C31.34)

R.T.: 16.658 min  
Delta R.T.: 0.000 min  
Response: 2190449  
Conc: 17.19 ug/ml



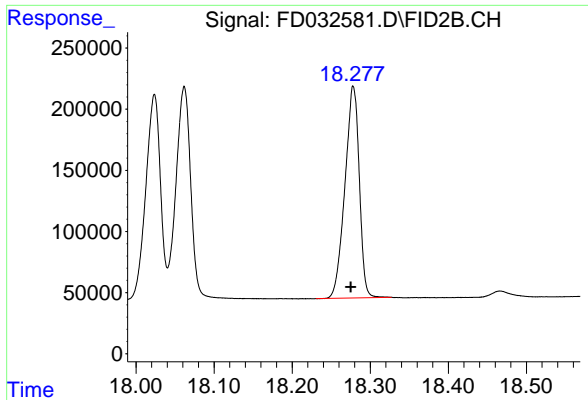
#19 Indeno[1,2,3-cd]pyrene (C35.01)

R.T.: 18.024 min  
Delta R.T.: 0.000 min  
Response: 2185582  
Conc: 18.34 ug/ml



#20 Dibenz[a,h]anthracene (C30.36)

R.T.: 18.062 min  
Delta R.T.: -0.002 min  
Response: 2261136  
Conc: 17.88 ug/ml



#21 Benzo[g,h,i]perylene (C34.01)

R.T.: 18.278 min  
Delta R.T.: 0.003 min  
Response: 2209567  
Conc: 18.69 ug/ml

Instrument :  
FID\_D  
ClientSampleId :  
20 PPM AROMATIC HC STD