

Data Path : Z:\pestpcbsrv\HPCHEM1\FID_D\Data\FD031320AL\
 Data File : FD032630.D
 Signal(s) : FID2B.CH
 Acq On : 13 Mar 2020 16:06
 Operator : DD\AJ
 Sample : PB127519BL
 Misc :
 ALS Vial : 53 Sample Multiplier: 1

Integration File: autoint1.e
 Quant Time: Mar 14 00:12:30 2020
 Quant Method : Z:\pestpcbsrv\HPCHEM1\FID_D\methods\Alaphatic EPH 030420.M
 Quant Title : GC Extractables
 QLast Update : Thu Mar 05 10:06:03 2020
 Response via : Initial Calibration
 Integrator: ChemStation 6890 Scale Mode: Large solvent peaks clipped

Volume Inj. : 1 ul
 Signal Phase : Rxi-1ms
 Signal Info : 20M x 0.18mm x 0.18um

Compound	R.T.	Response	Conc Units

System Monitoring Compounds			
9) S ortho-Terphenyl (SURR)	11.519	9482009	66.100 ug/ml
Spiked Amount	50.000	Recovery	= 132.20%
12) S 1-chlorooctadecane (S...	12.948	7303368	65.383 ug/ml
Spiked Amount	50.000	Recovery	= 130.77%

Target Compounds

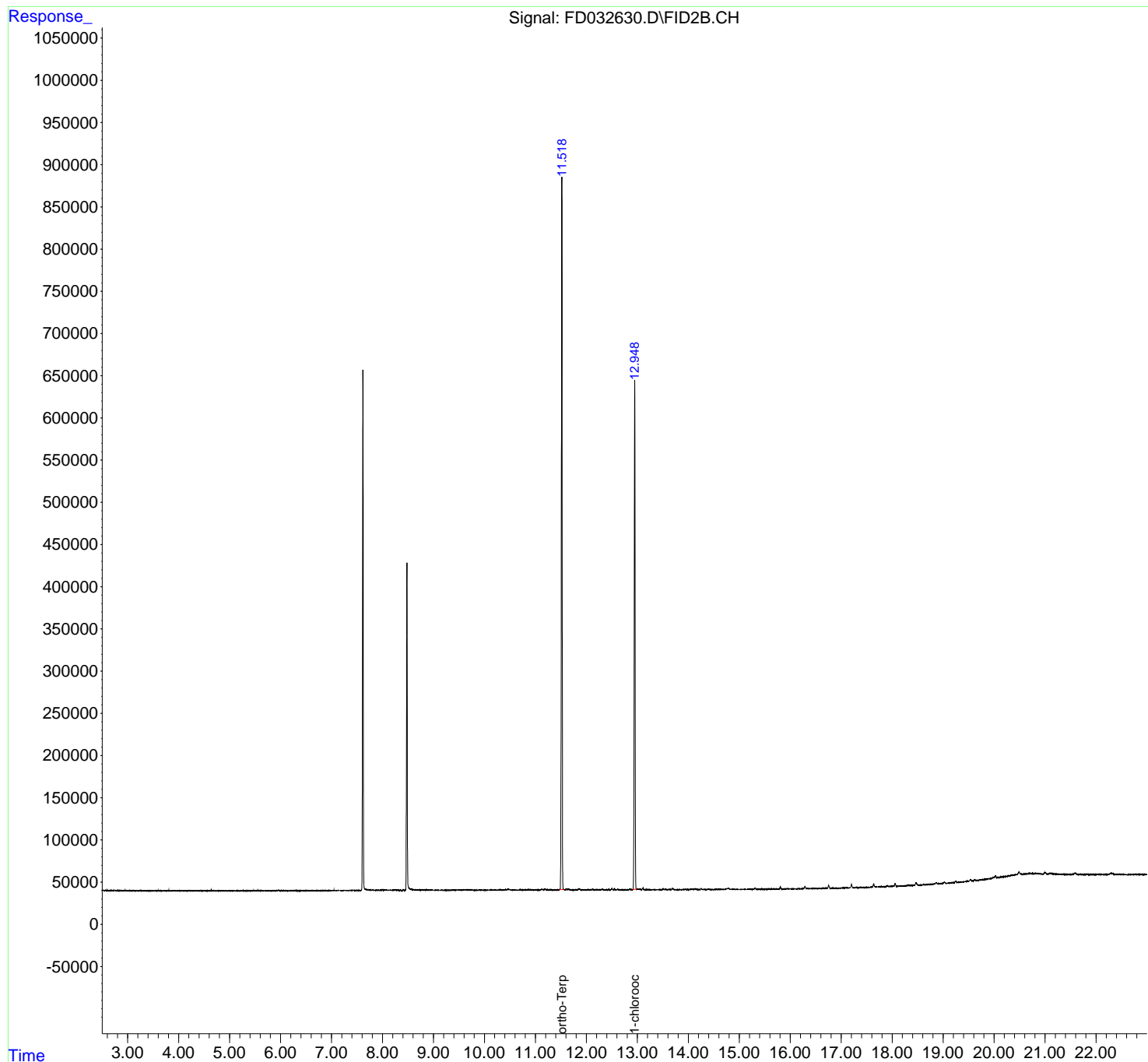
(f)=RT Delta > 1/2 Window

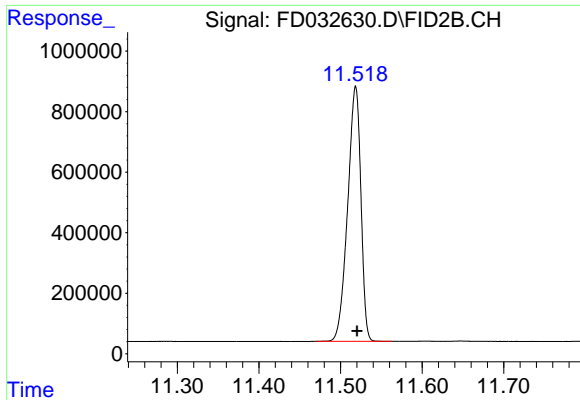
(m)=manual int.

Data Path : Z:\pestpcbsrv\HPCHEM1\FID_D\Data\FD031320AL\
Data File : FD032630.D
Signal(s) : FID2B.CH
Acq On : 13 Mar 2020 16:06
Operator : DD\AJ
Sample : PB127519BL
Misc :
ALS Vial : 53 Sample Multiplier: 1

Integration File: autoint1.e
Quant Time: Mar 14 00:12:30 2020
Quant Method : Z:\pestpcbsrv\HPCHEM1\FID_D\methods\Alaphatic EPH 030420.M
Quant Title : GC Extractables
QLast Update : Thu Mar 05 10:06:03 2020
Response via : Initial Calibration
Integrator: ChemStation 6890 Scale Mode: Large solvent peaks clipped

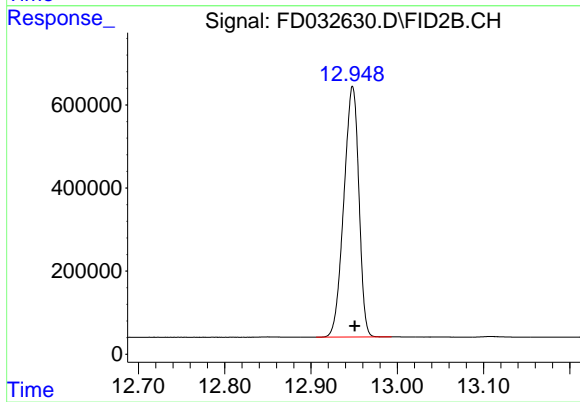
Volume Inj. : 1 ul
Signal Phase : Rxi-1ms
Signal Info : 20M x 0.18mm x 0.18um





#9 ortho-Terphenyl (SURR)

R.T.: 11.519 min
Delta R.T.: -0.002 min
Response: 9482009
Conc: 66.10 ug/ml



#12 1-chlorooctadecane (SURR)

R.T.: 12.948 min
Delta R.T.: -0.003 min
Response: 7303368
Conc: 65.38 ug/ml