

Data Path : Z:\pestpcbsrv\HPCHEM1\FID_D\Data\FD031419AR\
 Data File : FD028311.D
 Signal(s) : FID2B.CH
 Acq On : 14 Mar 2019 19:49
 Operator : AJ\SJ
 Sample : K1869-01MS
 Misc :
 ALS Vial : 55 Sample Multiplier: 1

Instrument :
 FID_D
 ClientSampleId :
 SP-1MS

Integration File: autoint1.e
 Quant Time: Mar 15 04:13:11 2019
 Quant Method : Z:\pestpcbsrv\HPCHEM1\FID_D\methods\Aromatic EPH 022819.M
 Quant Title : GC Extractables
 QLast Update : Fri Mar 01 04:06:35 2019
 Response via : Initial Calibration
 Integrator: ChemStation 6890 Scale Mode: Large solvent peaks clipped

Volume Inj. : 1 µl
 Signal Phase : Rxi-1ms
 Signal Info : 20M x 0.18mm x 0.18µm

| Compound | R.T. | Response | Conc Units |
|------------------------------------|--------|------------|--------------|
| ----- | | | |
| System Monitoring Compounds | | | |
| 4) S 2-Bromonaphthalene (S... | 7.311 | 2744171 | 25.999 ug/ml |
| Spiked Amount 50.000 | | Recovery = | 52.00% |
| 6) S 2-Fluorobiphenyl (SURR) | 8.159 | 1877774 | 26.639 ug/ml |
| Spiked Amount 50.000 Range 0 - 131 | | Recovery = | 53.28% |
| 11) S ortho-Terphenyl (SURR) | 11.197 | 2851292 | 24.870 ug/ml |
| Spiked Amount 50.000 | | Recovery = | 49.74% |
| Target Compounds | | | |
| 1) T 1,2,3-Trimethylbenzen... | 4.125 | 1993904 | 18.840 ug/ml |
| 2) T Naphthalene (C11.7) | 5.649 | 2357793 | 20.087 ug/ml |
| 3) T 2-Methylnaphthalene (...) | 6.697 | 2494370 | 21.086 ug/ml |
| 5) T Acenaphthylene (C15.06) | 7.962 | 2664374 | 23.107 ug/ml |
| 7) T Acenaphthene (C15.5) | 8.257 | 2799281 | 23.042 ug/ml |
| 8) T Flouorene (C16.55) | 9.035 | 2857725 | 23.750 ug/ml |
| 9) T Phenanthrene (C19.36) | 10.421 | 3006899 | 26.910 ug/ml |
| 10) T Anthracene (C19.43) | 10.496 | 2989659 | 27.006 ug/ml |
| 12) T Fluoranthene (C21.85) | 12.223 | 3791410 | 34.941 ug/ml |
| 13) T Pyrene (C20.8) | 12.516 | 3138378 | 29.907 ug/ml |
| 14) T Benzo[a]anthracene (C... | 14.383 | 3048293 | 30.120 ug/ml |
| 15) T Chrysene (C27.41) | 14.425 | 3143938 | 30.491 ug/ml |
| 16) T benzo[b]fluoranthene ... | 15.925 | 3145717 | 29.847 ug/ml |
| 17) T Bnezo[k]fluoranthene ... | 15.959 | 3105006 | 28.833 ug/ml |
| 18) T Benzo[a]pyrene (C31.34) | 16.300 | 2927007 | 27.348 ug/ml |
| 19) T Indeno[1,2,3-cd]pyren... | 17.660 | 2940809 | 28.737 ug/ml |
| 20) T Dibenz[a,h]anthracene... | 17.702 | 3169016 | 31.451 ug/ml |
| 21) T Benzo[g,h,i]perylene ... | 17.913 | 3025033 | 27.995 ug/ml |
| ----- | | | |

(f)=RT Delta > 1/2 Window

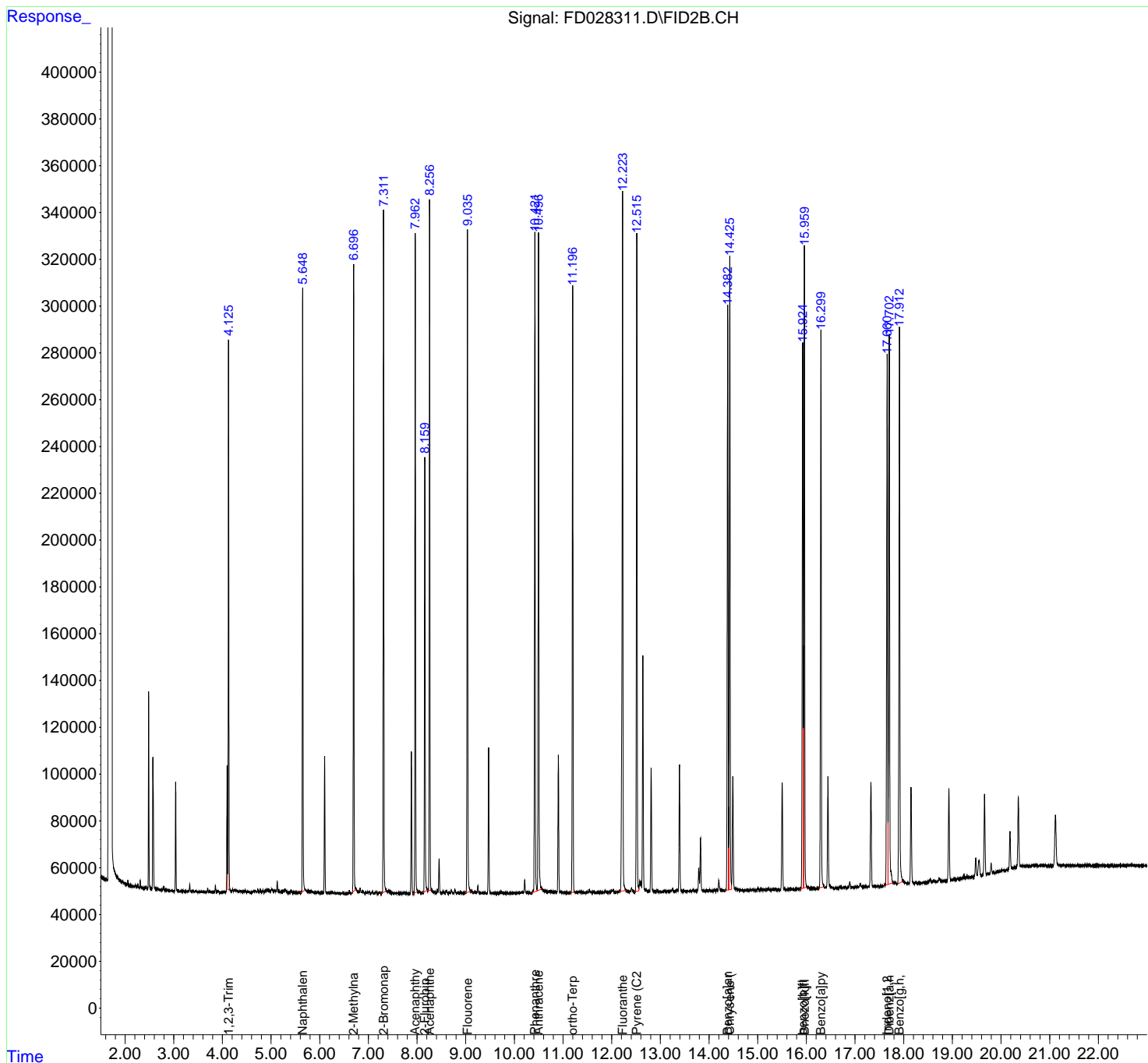
(m)=manual int.

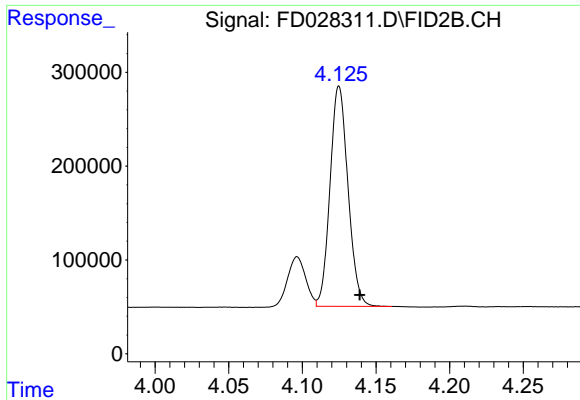
Data Path : Z:\pestpcbsrv\HPCHEM1\FID_D\Data\FD031419AR\
 Data File : FD028311.D
 Signal(s) : FID2B.CH
 Acq On : 14 Mar 2019 19:49
 Operator : AJ\SJ
 Sample : K1869-01MS
 Misc :
 ALS Vial : 55 Sample Multiplier: 1

Instrument :
 FID_D
 ClientSampled :
 SP-1MS

Integration File: autoint1.e
 Quant Time: Mar 15 04:13:11 2019
 Quant Method : Z:\pestpcbsrv\HPCHEM1\FID_D\methods\Aromatic EPH 022819.M
 Quant Title : GC Extractables
 QLast Update : Fri Mar 01 04:06:35 2019
 Response via : Initial Calibration
 Integrator: ChemStation 6890 Scale Mode: Large solvent peaks clipped

Volume Inj. : 1 µl
 Signal Phase : Rxi-1ms
 Signal Info : 20M x 0.18mm x 0.18µm

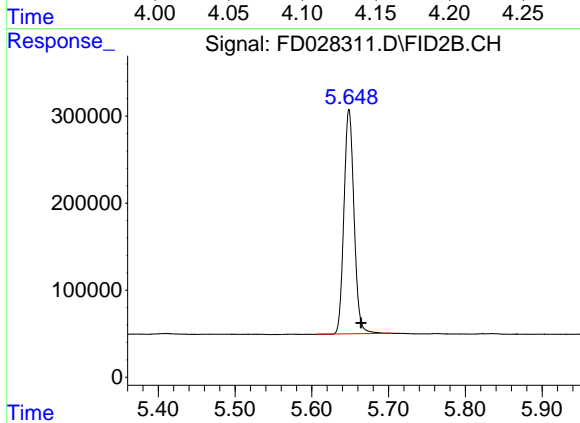




#1 1,2,3-Trimethylbenzene (C10.1)

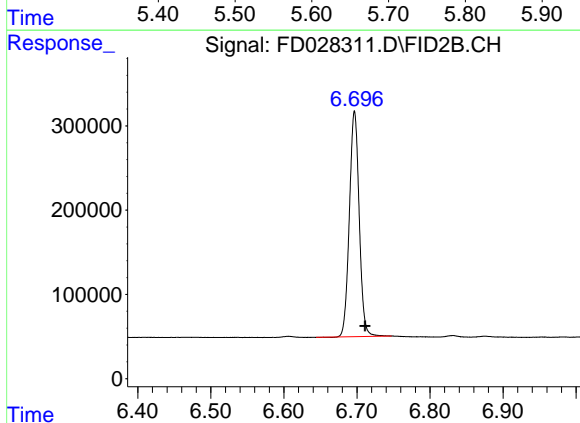
R.T.: 4.125 min
 Delta R.T.: -0.014 min
 Response: 1993904
 Conc: 18.84 ug/ml

Instrument :
 FID_D
 ClientSampled :
 SP-1MS



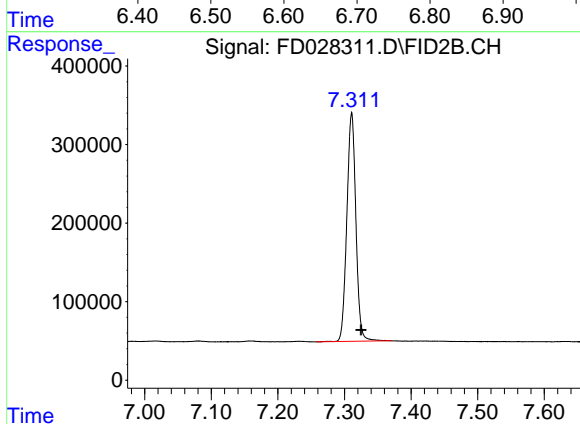
#2 Naphthalene (C11.7)

R.T.: 5.649 min
 Delta R.T.: -0.016 min
 Response: 2357793
 Conc: 20.09 ug/ml



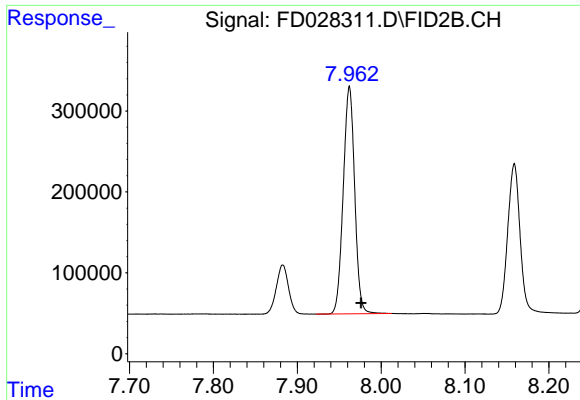
#3 2-Methylnaphthalene (C12.89)

R.T.: 6.697 min
 Delta R.T.: -0.014 min
 Response: 2494370
 Conc: 21.09 ug/ml



#4 2-Bromonaphthalene (SURR)

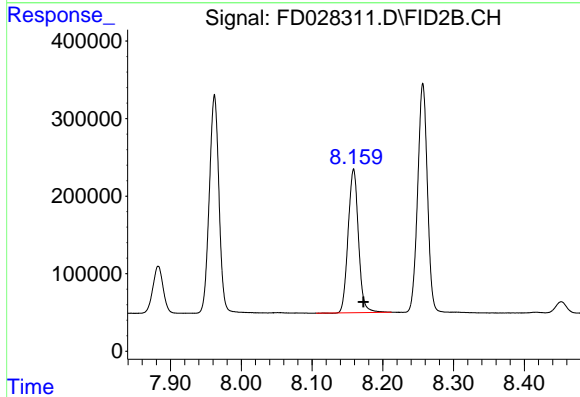
R.T.: 7.311 min
 Delta R.T.: -0.014 min
 Response: 2744171
 Conc: 26.00 ug/ml



#5 Acenaphthylene (C15.06)

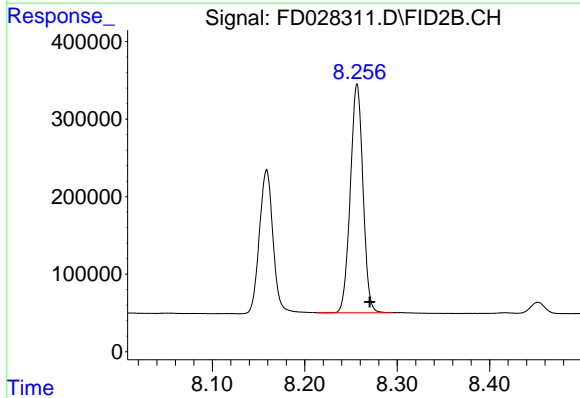
R.T.: 7.962 min
Delta R.T.: -0.014 min
Response: 2664374
Conc: 23.11 ug/ml

Instrument :
FID_D
ClientSampled :
SP-1MS



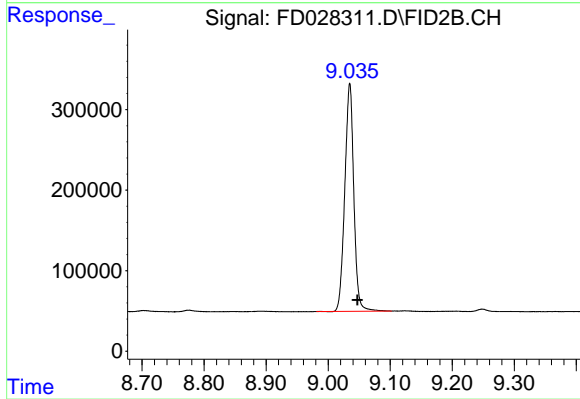
#6 2-Fluorobiphenyl (SURR)

R.T.: 8.159 min
Delta R.T.: -0.014 min
Response: 1877774
Conc: 26.64 ug/ml



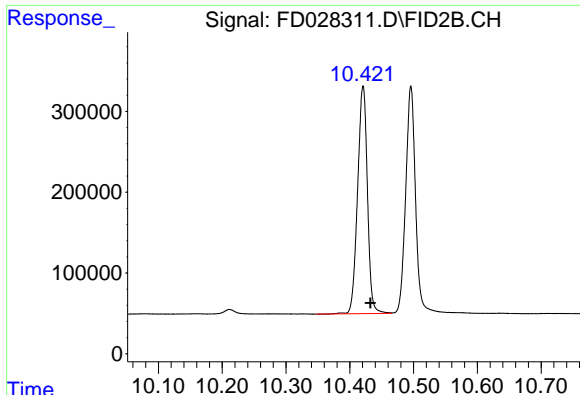
#7 Acenaphthene (C15.5)

R.T.: 8.257 min
Delta R.T.: -0.014 min
Response: 2799281
Conc: 23.04 ug/ml



#8 Fluorene (C16.55)

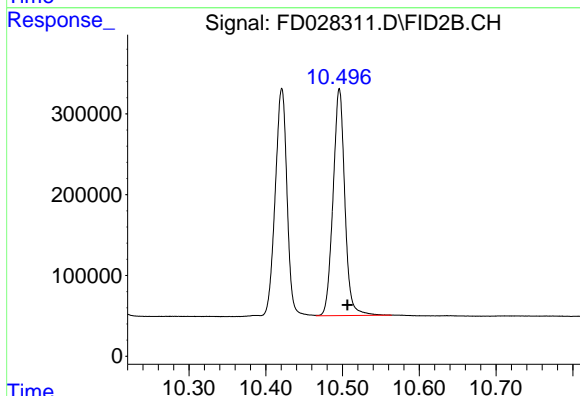
R.T.: 9.035 min
Delta R.T.: -0.012 min
Response: 2857725
Conc: 23.75 ug/ml



#9 Phenanthrene (C19.36)

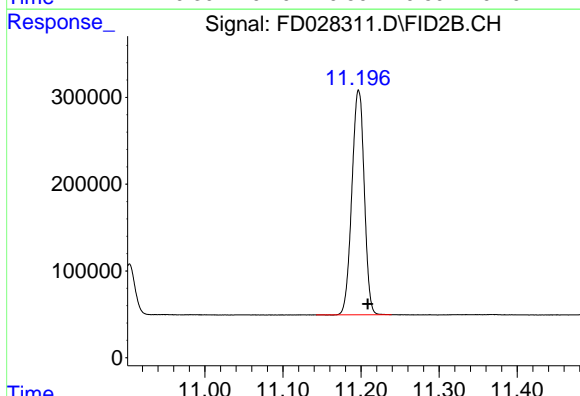
R.T.: 10.421 min
Delta R.T.: -0.011 min
Response: 3006899
Conc: 26.91 ug/ml

Instrument :
FID_D
ClientSampled :
SP-1MS



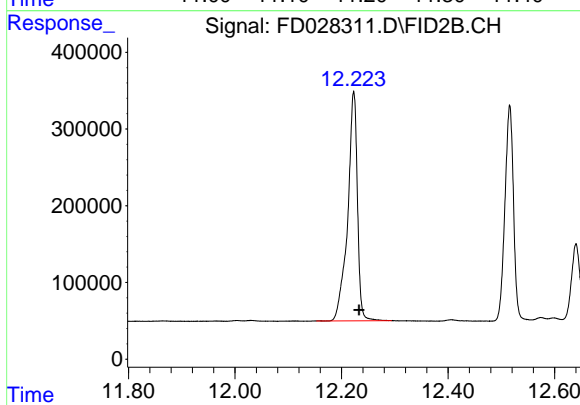
#10 Anthracene (C19.43)

R.T.: 10.496 min
Delta R.T.: -0.011 min
Response: 2989659
Conc: 27.01 ug/ml



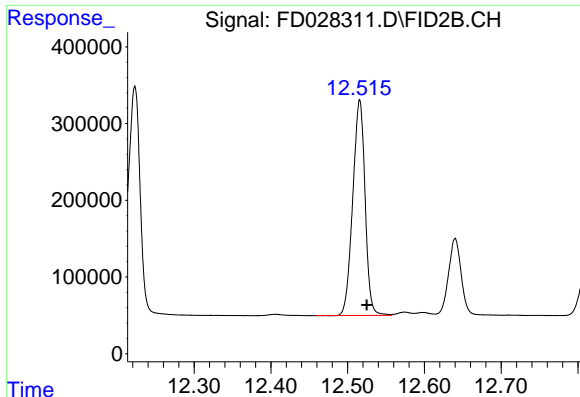
#11 ortho-Terphenyl (SURR)

R.T.: 11.197 min
Delta R.T.: -0.011 min
Response: 2851292
Conc: 24.87 ug/ml



#12 Fluoranthene (C21.85)

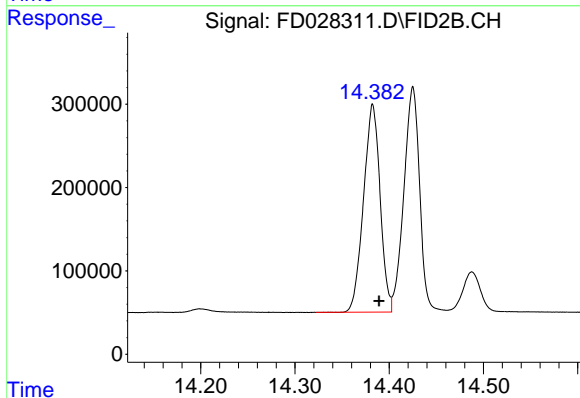
R.T.: 12.223 min
Delta R.T.: -0.010 min
Response: 3791410
Conc: 34.94 ug/ml



#13 Pyrene (C20.8)

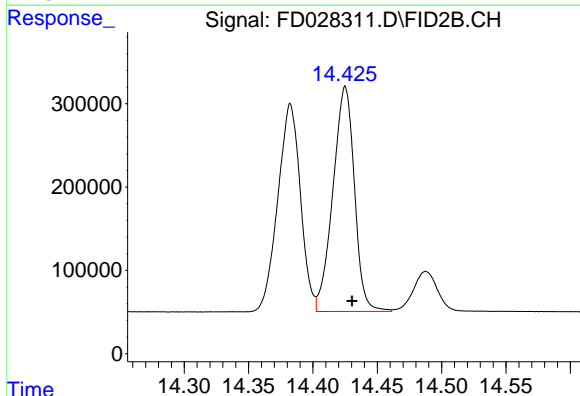
R.T.: 12.516 min
Delta R.T.: -0.009 min
Response: 3138378
Conc: 29.91 ug/ml

Instrument :
FID_D
ClientSampleId :
SP-1MS



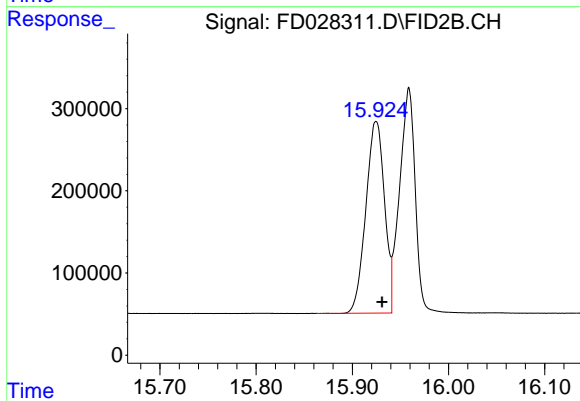
#14 Benzo[a]anthracene (C26.37)

R.T.: 14.383 min
Delta R.T.: -0.007 min
Response: 3048293
Conc: 30.12 ug/ml



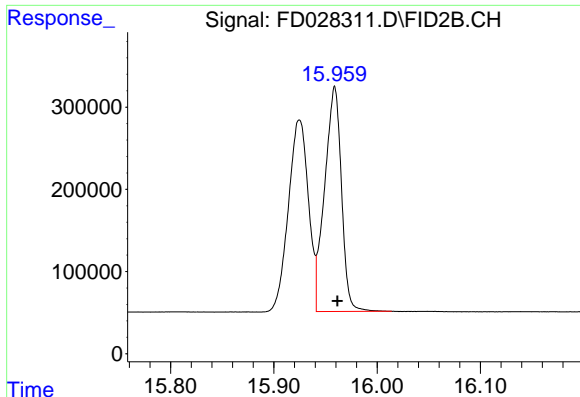
#15 Chrysene (C27.41)

R.T.: 14.425 min
Delta R.T.: -0.005 min
Response: 3143938
Conc: 30.49 ug/ml



#16 benzo[b]fluoranthene (C30.41)

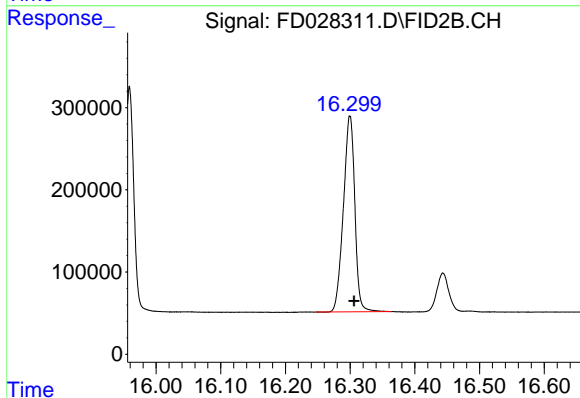
R.T.: 15.925 min
Delta R.T.: -0.006 min
Response: 3145717
Conc: 29.85 ug/ml



#17 Bnezo[k]fluoranthene (C30.14)

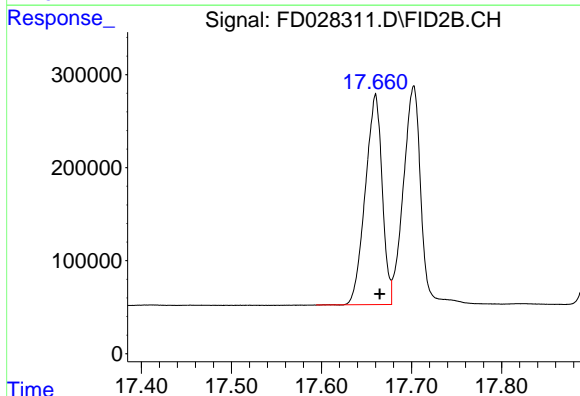
R.T.: 15.959 min
Delta R.T.: -0.003 min
Response: 3105006
Conc: 28.83 ug/ml

Instrument :
FID_D
ClientSampled :
SP-1MS



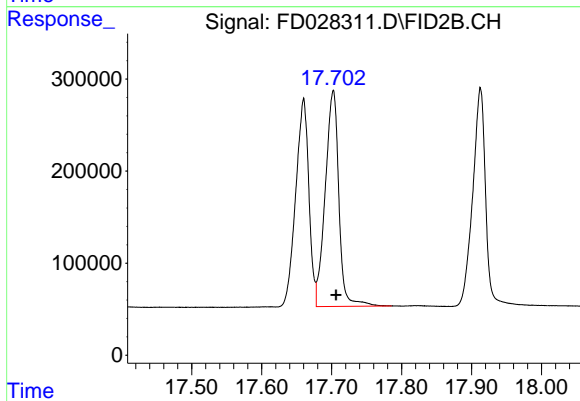
#18 Benzo[a]pyrene (C31.34)

R.T.: 16.300 min
Delta R.T.: -0.006 min
Response: 2927007
Conc: 27.35 ug/ml



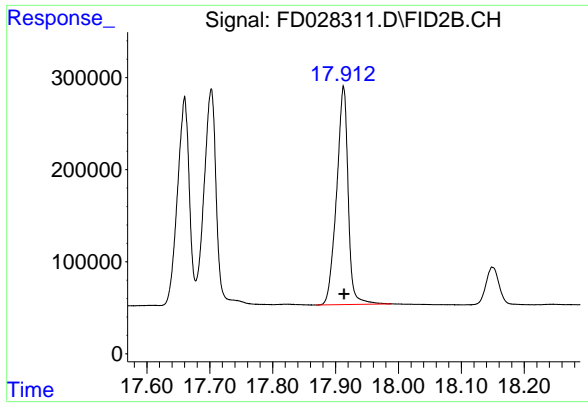
#19 Indeno[1,2,3-cd]pyrene (C35.01)

R.T.: 17.660 min
Delta R.T.: -0.005 min
Response: 2940809
Conc: 28.74 ug/ml



#20 Dibenz[a,h]anthracene (C30.36)

R.T.: 17.702 min
Delta R.T.: -0.004 min
Response: 3169016
Conc: 31.45 ug/ml



#21 Benzo[g,h,i]perylene (C34.01)

R.T.: 17.913 min
Delta R.T.: 0.000 min
Response: 3025033
Conc: 28.00 ug/ml

Instrument :
FID_D
ClientSampleId :
SP-1MS