

Data Path : Z:\pestpcbsrv\HPCHEM1\FID\_D\Data\FD031419AR\  
 Data File : FD028330.D  
 Signal(s) : FID2B.CH  
 Acq On : 15 Mar 2019 7:11  
 Operator : AJ\SJ  
 Sample : K1869-16  
 Misc :  
 ALS Vial : 72 Sample Multiplier: 1

Instrument :  
 FID\_D  
 ClientSampleId :  
 SP-2

Integration File: autoint1.e  
 Quant Time: Mar 15 08:33:48 2019  
 Quant Method : Z:\pestpcbsrv\HPCHEM1\FID\_D\methods\Aromatic EPH 022819.M  
 Quant Title : GC Extractables  
 QLast Update : Fri Mar 01 04:06:35 2019  
 Response via : Initial Calibration  
 Integrator: ChemStation 6890 Scale Mode: Large solvent peaks clipped

Volume Inj. : 1 µl  
 Signal Phase : Rxi-1ms  
 Signal Info : 20M x 0.18mm x 0.18µm

Compound	R.T.	Response	Conc Units
-----			
System Monitoring Compounds			
4) S 2-Bromonaphthalene (S...	7.316	6951516	65.862 ug/ml
Spiked Amount 50.000		Recovery =	131.72%
6) S 2-Fluorobiphenyl (SURR)	8.163	4661183	66.125 ug/ml
Spiked Amount 50.000 Range 0 - 131		Recovery =	132.25%#
11) S ortho-Terphenyl (SURR)	11.196	1811267	15.798 ug/ml
Spiked Amount 50.000		Recovery =	31.60%

Target Compounds

(f)=RT Delta > 1/2 Window

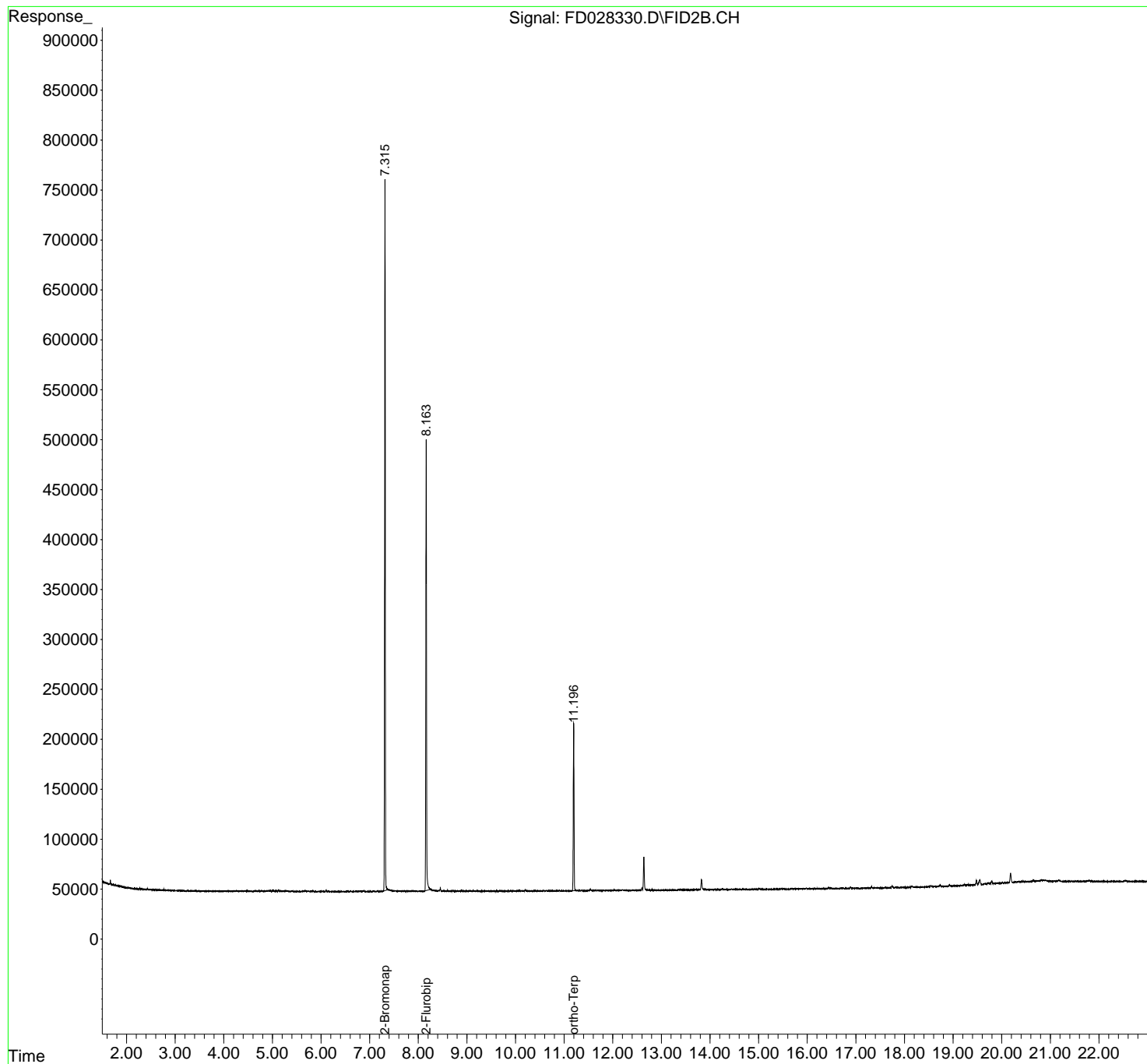
(m)=manual int.

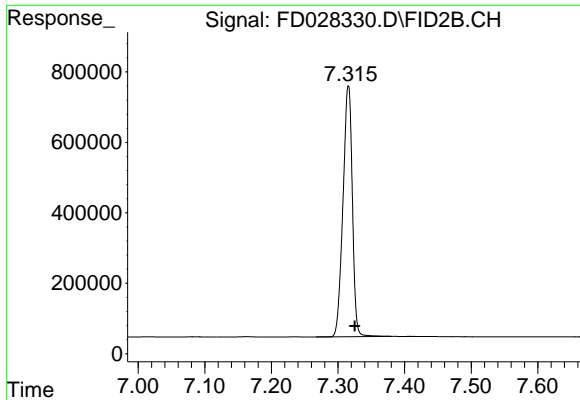
Data Path : Z:\pestpcbsrv\HPCHEM1\FID\_D\Data\FD031419AR\  
Data File : FD028330.D  
Signal(s) : FID2B.CH  
Acq On : 15 Mar 2019 7:11  
Operator : AJ\SJ  
Sample : K1869-16  
Misc :  
ALS Vial : 72 Sample Multiplier: 1

Instrument :  
FID\_D  
ClientSampleId :  
SP-2

Integration File: autoint1.e  
Quant Time: Mar 15 08:33:48 2019  
Quant Method : Z:\pestpcbsrv\HPCHEM1\FID\_D\methods\Aromatic EPH 022819.M  
Quant Title : GC Extractables  
QLast Update : Fri Mar 01 04:06:35 2019  
Response via : Initial Calibration  
Integrator: ChemStation 6890 Scale Mode: Large solvent peaks clipped

Volume Inj. : 1 µl  
Signal Phase : Rxi-1ms  
Signal Info : 20M x 0.18mm x 0.18µm

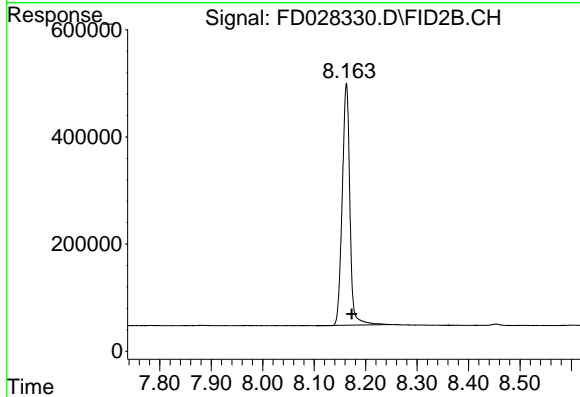




#4 2-Bromonaphthalene (SURR)

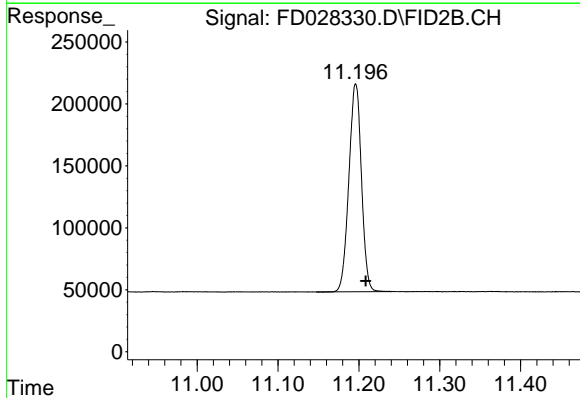
R.T.: 7.316 min  
Delta R.T.: -0.010 min  
Response: 6951516  
Conc: 65.86 ug/ml

Instrument :  
FID\_D  
ClientSampled :  
SP-2



#6 2-Fluorobiphenyl (SURR)

R.T.: 8.163 min  
Delta R.T.: -0.010 min  
Response: 4661183  
Conc: 66.13 ug/ml



#11 ortho-Terphenyl (SURR)

R.T.: 11.196 min  
Delta R.T.: -0.012 min  
Response: 1811267  
Conc: 15.80 ug/ml