

Data Path : Z:\pestpcbsrv\HPCHEM1\FID_D\Data\FD031822AL\
 Data File : FD041622.D
 Signal(s) : FID2B.CH
 Acq On : 18 Mar 2022 8:44
 Operator : UA/NP
 Sample : MECL2
 Misc :
 ALS Vial : 51 Sample Multiplier: 1

Integration File: autoint1.e
 Quant Time: Mar 19 00:48:31 2022
 Quant Method : Z:\pestpcbsrv\HPCHEM1\FID_D\methods\Aliphatic EPH 022322.M
 Quant Title : GC Extractables
 QLast Update : Thu Feb 24 01:21:33 2022
 Response via : Initial Calibration
 Integrator: ChemStation 6890 Scale Mode: Large solvent peaks clipped

Volume Inj. : 1 ul
 Signal Phase : Rxi-1ms
 Signal Info : 20M x 0.18mm x 0.18um

Compound	R.T.	Response	Conc Units

System Monitoring Compounds			
Target Compounds			
8) T n-Octadecane (C18)	10.917	62697	0.403 ug/ml
10) T n-Eicosane (C20)	12.227	49507	0.319 ug/ml
11) T n-Heneicosane (C21)	12.836	51465	0.329 ug/ml
13) T n-Docosane (C22)	13.418	42855	0.274 ug/ml
14) T n-Tetracosane (C24)	14.472f	47385	0.302 ug/ml

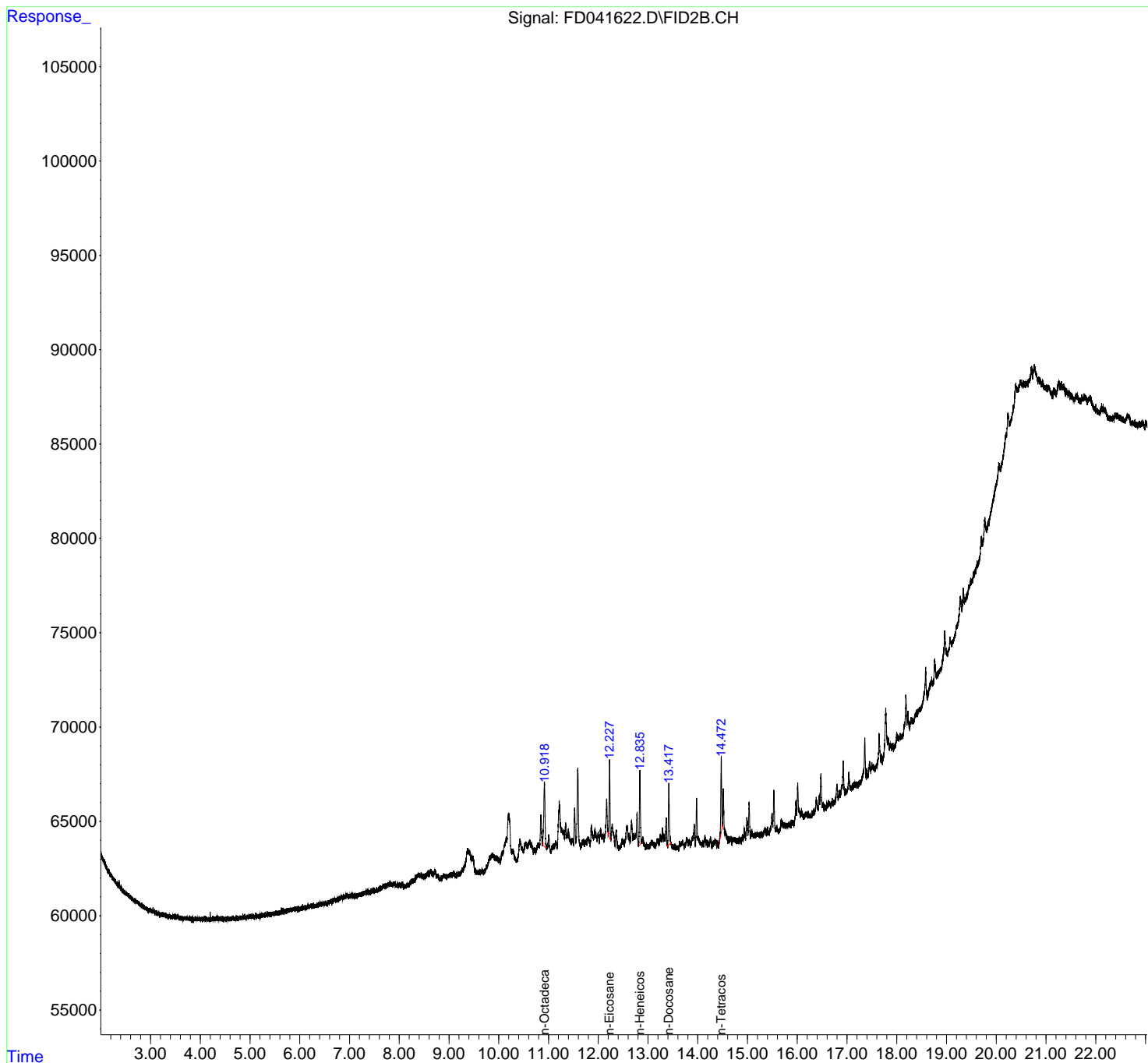
(f)=RT Delta > 1/2 Window

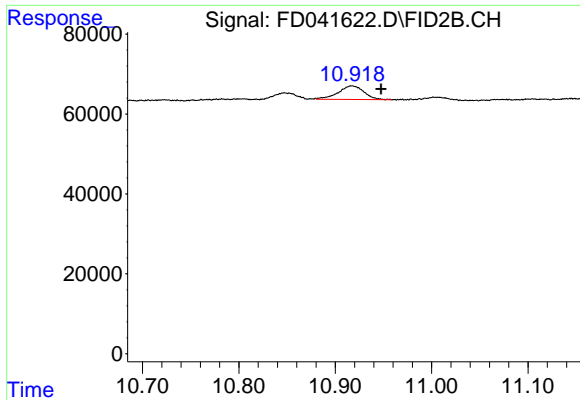
(m)=manual int.

Data Path : Z:\pestpcbsrv\HPCHEM1\FID_D\Data\FD031822AL\
Data File : FD041622.D
Signal(s) : FID2B.CH
Acq On : 18 Mar 2022 8:44
Operator : UA/NP
Sample : MECL2
Misc :
ALS Vial : 51 Sample Multiplier: 1

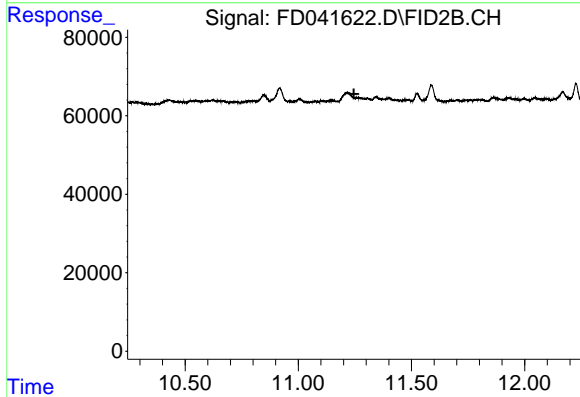
Integration File: autoint1.e
Quant Time: Mar 19 00:48:31 2022
Quant Method : Z:\pestpcbsrv\HPCHEM1\FID_D\methods\Aliphatic EPH 022322.M
Quant Title : GC Extractables
QLast Update : Thu Feb 24 01:21:33 2022
Response via : Initial Calibration
Integrator: ChemStation 6890 Scale Mode: Large solvent peaks clipped

Volume Inj. : 1 ul
Signal Phase : Rxi-1ms
Signal Info : 20M x 0.18mm x 0.18um

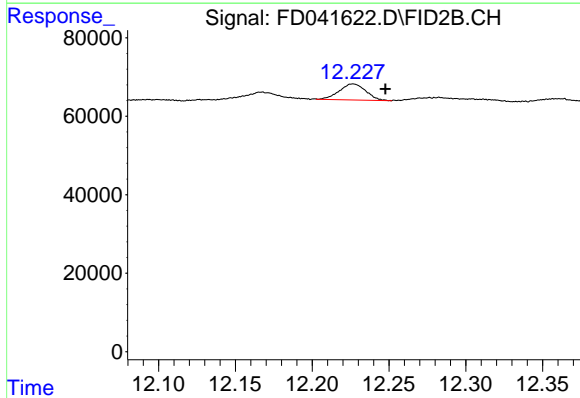




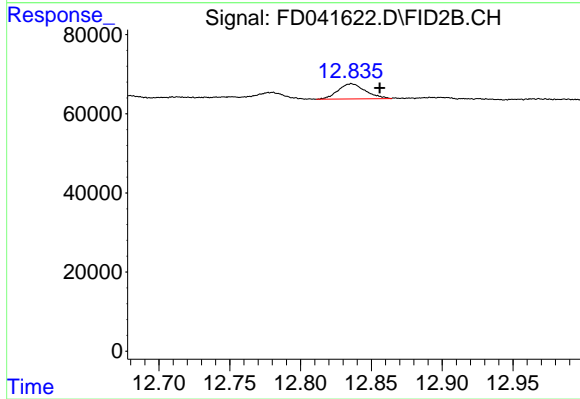
#8 n-Octadecane (C18)
 R.T.: 10.917 min
 Delta R.T.: -0.030 min
 Response: 62697
 Conc: 0.40 ug/ml



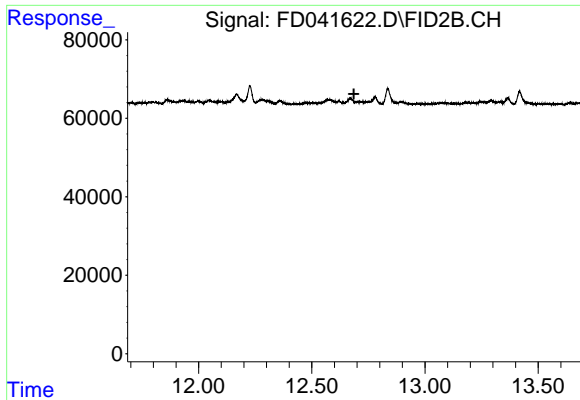
#9 ortho-Terphenyl (SURR)
 R.T.: 0.000 min
 Exp R.T.: 11.246 min
 Response: 0
 Conc: N.D.



#10 n-Eicosane (C20)
 R.T.: 12.227 min
 Delta R.T.: -0.021 min
 Response: 49507
 Conc: 0.32 ug/ml

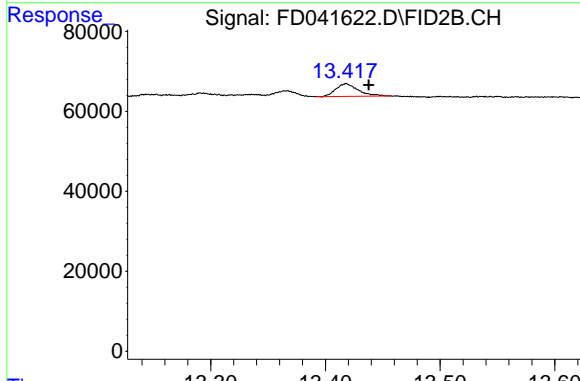


#11 n-Heneicosane (C21)
 R.T.: 12.836 min
 Delta R.T.: -0.020 min
 Response: 51465
 Conc: 0.33 ug/ml



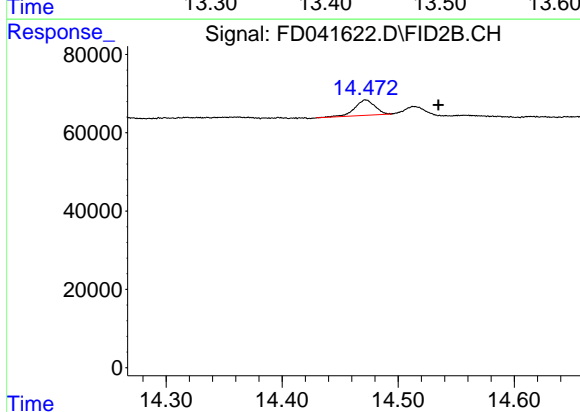
#12 1-chlorooctadecane (SURR)

R.T.: 0.000 min
 Exp R.T. : 12.686 min
 Response: 0
 Conc: N.D.



#13 n-Docosane (C22)

R.T.: 13.418 min
 Delta R.T.: -0.020 min
 Response: 42855
 Conc: 0.27 ug/ml



#14 n-Tetracosane (C24)

R.T.: 14.472 min
 Delta R.T.: -0.063 min
 Response: 47385
 Conc: 0.30 ug/ml