

Data Path : Z:\pestpcbsrv\HPCHEM1\FID_D\Data\FD032321AL\
 Data File : FD036510.D
 Signal(s) : FID2B.CH
 Acq On : 24 Mar 2021 2:08
 Operator : DD\AJ
 Sample : 20 PPM ALIPHATIC HC STD3
 Misc :
 ALS Vial : 60 Sample Multiplier: 1

Instrument :
 FID_D
 ClientSampled :

Integration File: autoint1.e
 Quant Time: Mar 24 03:22:12 2021
 Quant Method : Z:\pestpcbsrv\HPCHEM1\FID_D\methods\Alaphatic EPH 032321.M
 Quant Title : GC Extractables
 QLast Update : Wed Mar 24 03:21:09 2021
 Response via : Initial Calibration
 Integrator: ChemStation 6890 Scale Mode: Large solvent peaks clipped

Volume Inj. : 1 ul
 Signal Phase : Rxi-1ms
 Signal Info : 20M x 0.18mm x 0.18um

Compound	R.T.	Response	Conc Units

System Monitoring Compounds			
9) S ortho-Terphenyl (SURR)	11.495	2964485	20.000 ug/ml
Spiked Amount	50.000	Recovery	= 40.00%
12) S 1-chlorooctadecane (S...	12.925	2336394	20.000 ug/ml
Spiked Amount	50.000	Recovery	= 40.00%
Target Compounds			
1) T n-Nonane (C9)	3.295	2533304	20.000 ug/ml
2) T n-Decane (C10)	4.357	2565731	20.000 ug/ml
3) T A~Naphthalene (C11.7)	5.931	2909367	20.000 ug/ml
4) T n-Dodecane (C12)	6.366	2638736	20.000 ug/ml
5) T A~2-methylnaphthalene...	6.982	2986217	20.000 ug/ml
6) T n-Tetradecane (C14)	8.154	2695410	20.000 ug/ml
7) T n-Hexadecane (C16)	9.746	2660367	20.000 ug/ml
8) T n-Octadecane (C18)	11.182	2771431	20.000 ug/ml
10) T n-Eicosane (C20)	12.485	2772286	20.000 ug/ml
11) T n-Heneicosane (C21)	13.093	2755258	20.000 ug/ml
13) T n-Docosane (C22)	13.676	2730443	20.000 ug/ml
14) T n-Tetracosane (C24)	14.772	2661794	20.000 ug/ml
15) T n-Hexacosane (C26)	15.787	2549069	20.000 ug/ml
16) T n-Octacosane (C28)	16.731	2439994	20.000 ug/ml
17) T n-Tricontane (C30)	17.612	2325623	20.000 ug/ml
18) T n-Dotriacontane (C32)	18.438	2204786	20.000 ug/ml
19) T n-Tetratriacontane (C34)	19.218	2060043	20.000 ug/ml
20) T n-Hexatriacontane (C36)	19.951	1909243	20.000 ug/ml
21) T n-Octatriacontane (C38)	20.661	1848599	20.000 ug/ml
22) T n-Tetracontane (C40)	21.510	1957608	20.000 ug/ml

(f)=RT Delta > 1/2 Window

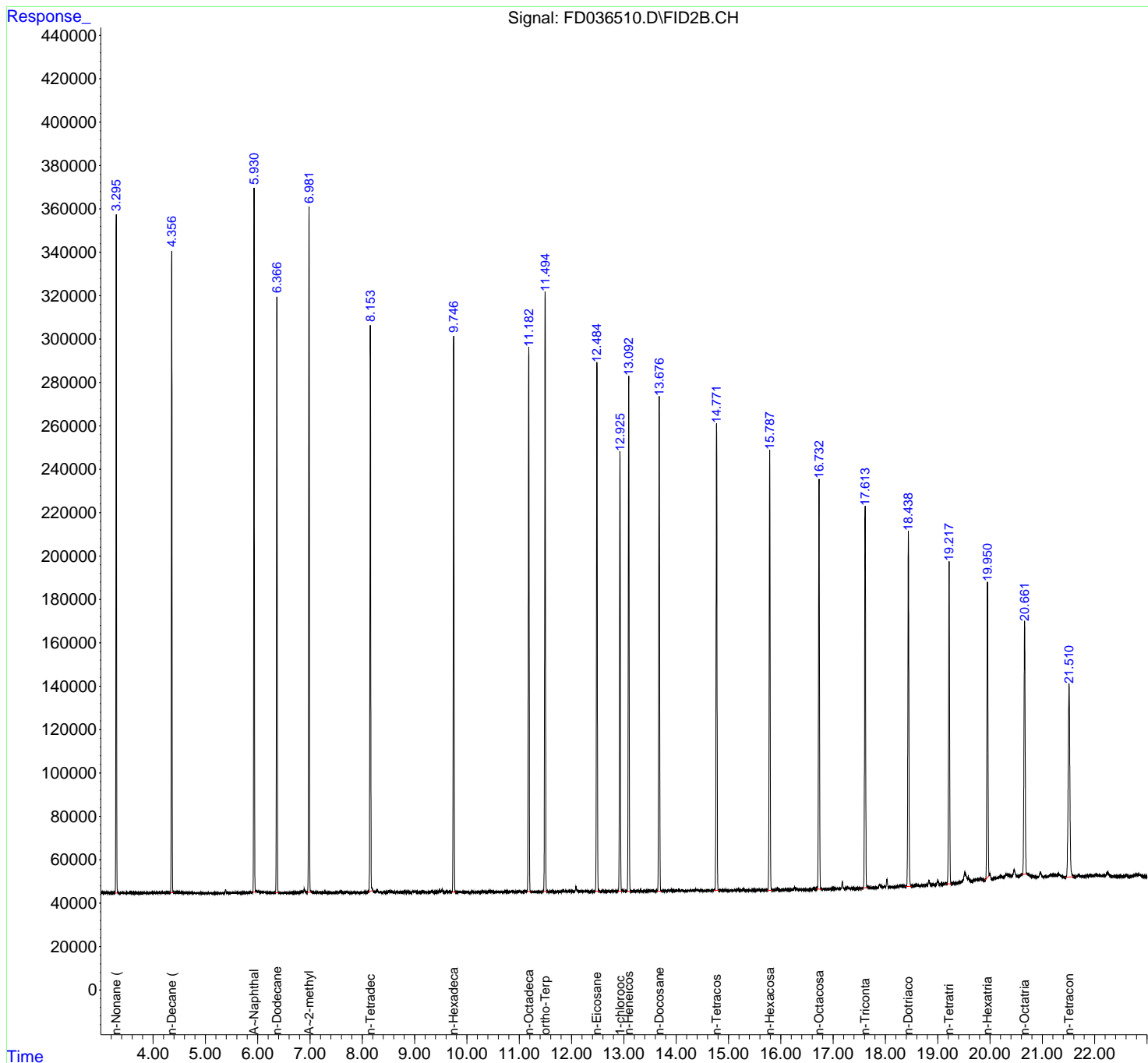
(m)=manual int.

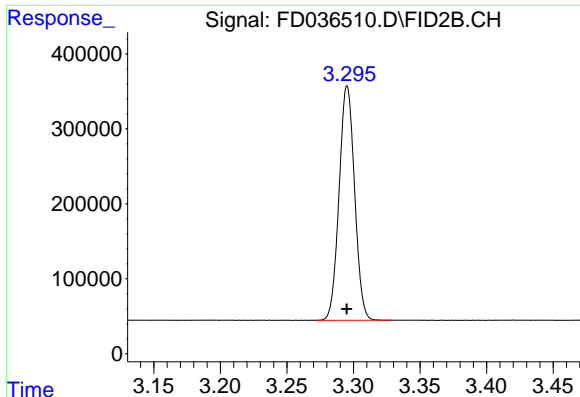
Data Path : Z:\pestpcbsrv\HPCHEM1\FID_D\Data\FD032321AL\
 Data File : FD036510.D
 Signal(s) : FID2B.CH
 Acq On : 24 Mar 2021 2:08
 Operator : DD\AJ
 Sample : 20 PPM ALIPHATIC HC STD3
 Misc :
 ALS Vial : 60 Sample Multiplier: 1

Instrument :
 FID_D
 ClientSampled :

Integration File: autoint1.e
 Quant Time: Mar 24 03:22:12 2021
 Quant Method : Z:\pestpcbsrv\HPCHEM1\FID_D\methods\Aliphatic EPH 032321.M
 Quant Title : GC Extractables
 QLast Update : Wed Mar 24 03:21:09 2021
 Response via : Initial Calibration
 Integrator: ChemStation 6890 Scale Mode: Large solvent peaks clipped

Volume Inj. : 1 ul
 Signal Phase : Rxi-1ms
 Signal Info : 20M x 0.18mm x 0.18um

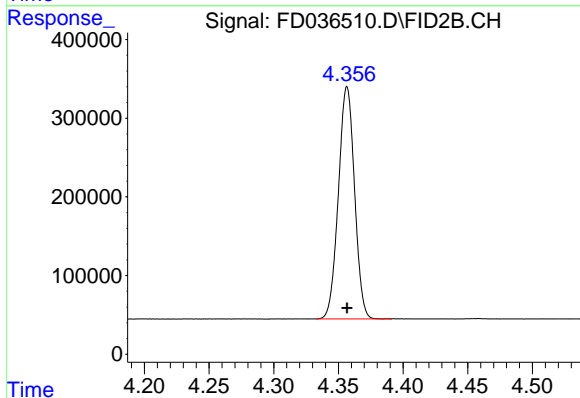




#1 n-Nonane (C9)

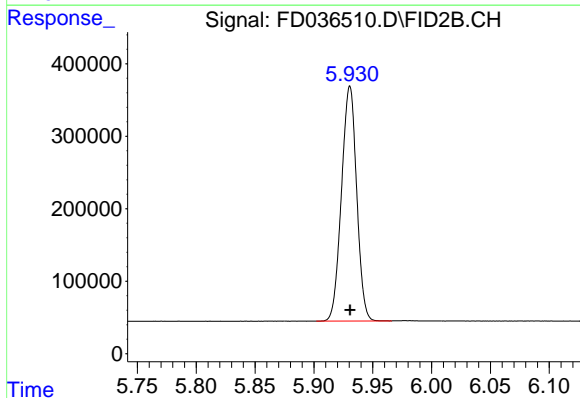
R.T.: 3.295 min
 Delta R.T.: 0.000 min
 Response: 2533304
 Conc: 20.00 ug/ml

Instrument :
 FID_D
 ClientSampleId :



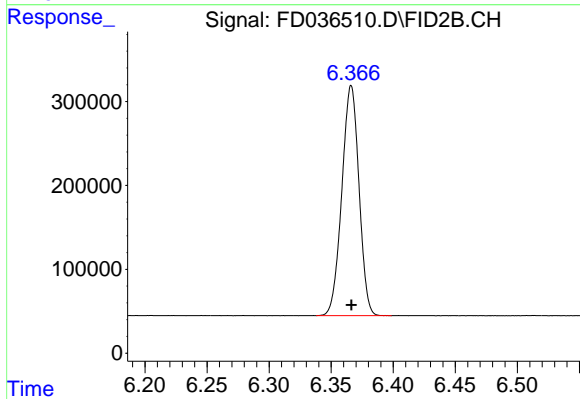
#2 n-Decane (C10)

R.T.: 4.357 min
 Delta R.T.: 0.000 min
 Response: 2565731
 Conc: 20.00 ug/ml



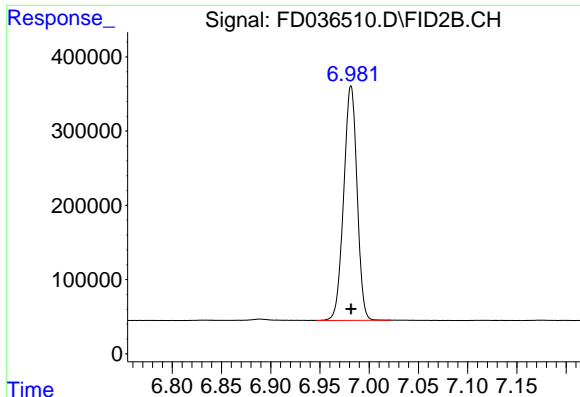
#3 A-Naphthalene (C11.7)

R.T.: 5.931 min
 Delta R.T.: 0.000 min
 Response: 2909367
 Conc: 20.00 ug/ml



#4 n-Dodecane (C12)

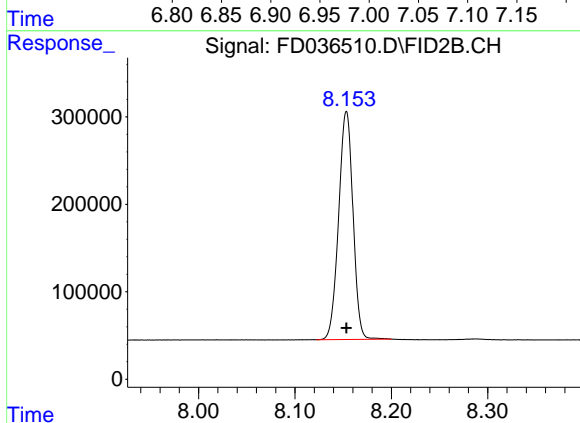
R.T.: 6.366 min
 Delta R.T.: 0.000 min
 Response: 2638736
 Conc: 20.00 ug/ml



#5 A~2-methylnaphthalene (C12.89)

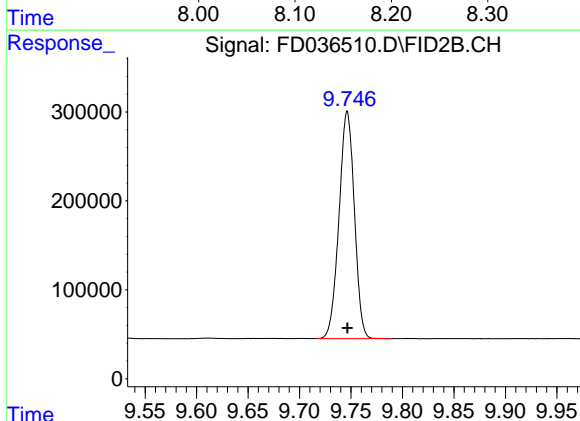
R.T.: 6.982 min
Delta R.T.: 0.000 min
Response: 2986217
Conc: 20.00 ug/ml

Instrument :
FID_D
ClientSampled :



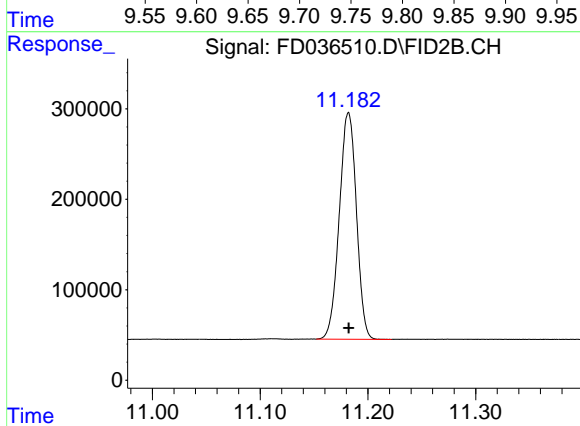
#6 n-Tetradecane (C14)

R.T.: 8.154 min
Delta R.T.: 0.000 min
Response: 2695410
Conc: 20.00 ug/ml



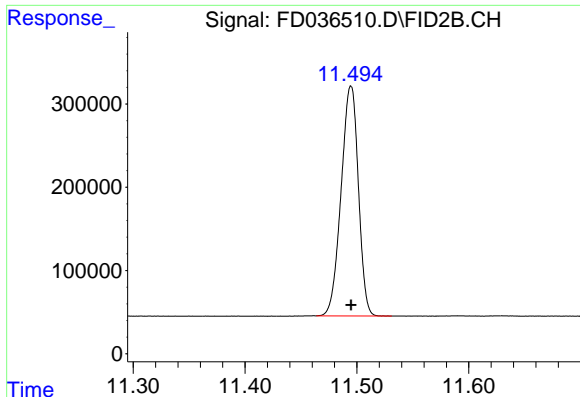
#7 n-Hexadecane (C16)

R.T.: 9.746 min
Delta R.T.: 0.000 min
Response: 2660367
Conc: 20.00 ug/ml



#8 n-Octadecane (C18)

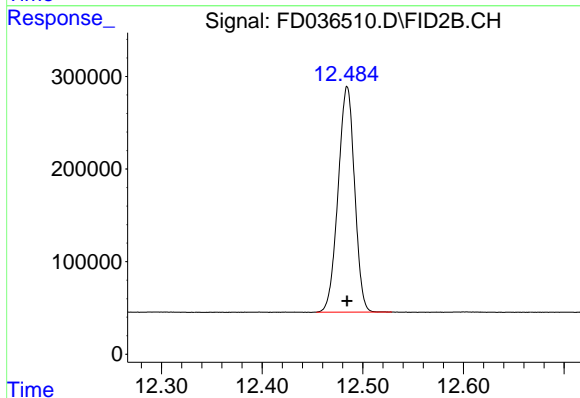
R.T.: 11.182 min
Delta R.T.: 0.000 min
Response: 2771431
Conc: 20.00 ug/ml



#9 ortho-Terphenyl (SURR)

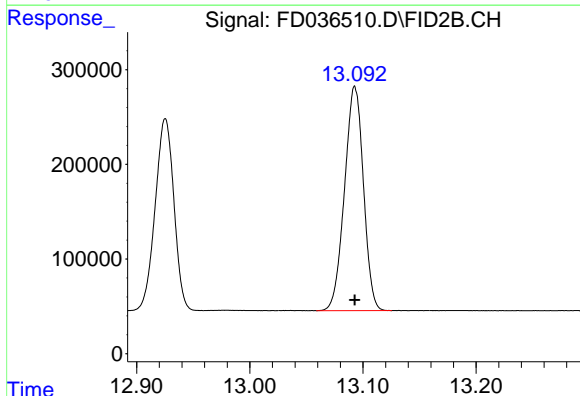
R.T.: 11.495 min
Delta R.T.: 0.000 min
Response: 2964485
Conc: 20.00 ug/ml

Instrument :
FID_D
ClientSampled :



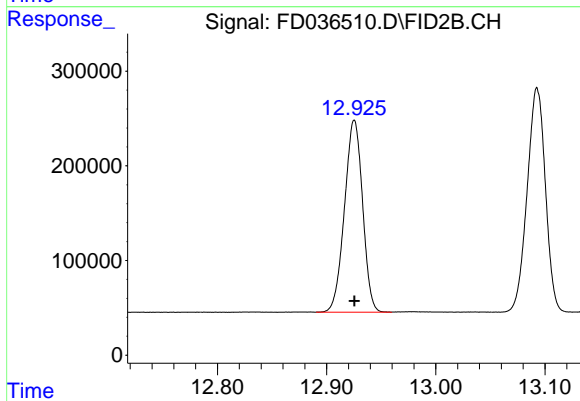
#10 n-Eicosane (C20)

R.T.: 12.485 min
Delta R.T.: 0.000 min
Response: 2772286
Conc: 20.00 ug/ml



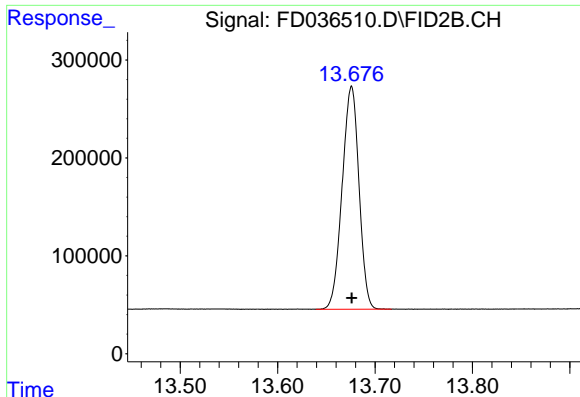
#11 n-Heneicosane (C21)

R.T.: 13.093 min
Delta R.T.: 0.000 min
Response: 2755258
Conc: 20.00 ug/ml



#12 1-chlorooctadecane (SURR)

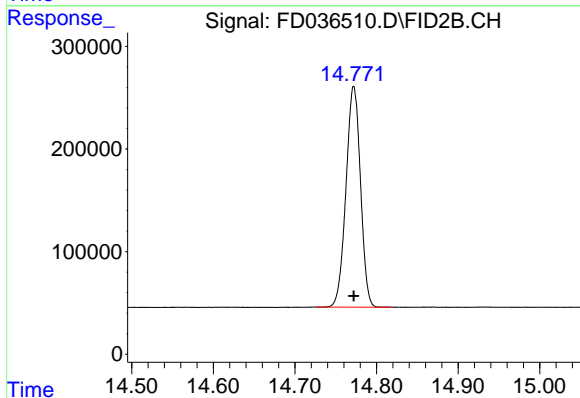
R.T.: 12.925 min
Delta R.T.: 0.000 min
Response: 2336394
Conc: 20.00 ug/ml



#13 n-Docosane (C22)

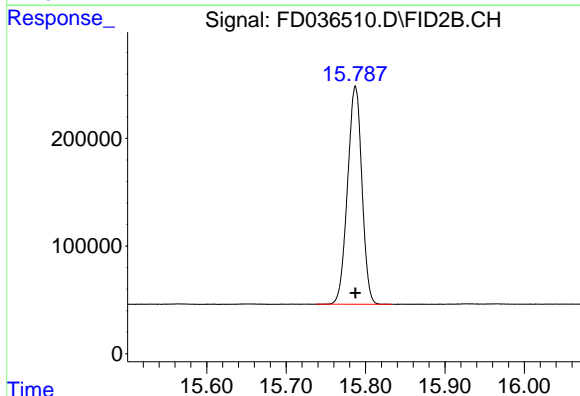
R.T.: 13.676 min
 Delta R.T.: 0.000 min
 Response: 2730443
 Conc: 20.00 ug/ml

Instrument :
 FID_D
 ClientSampled :



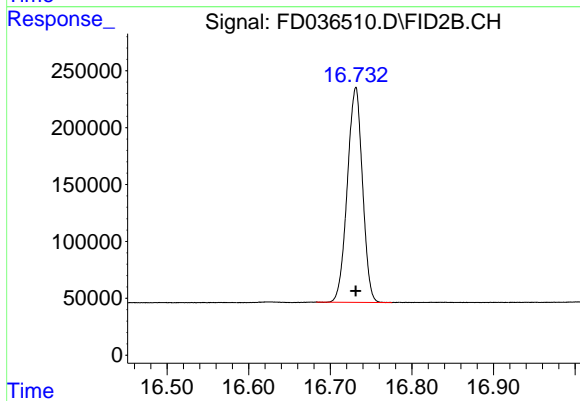
#14 n-Tetracosane (C24)

R.T.: 14.772 min
 Delta R.T.: 0.000 min
 Response: 2661794
 Conc: 20.00 ug/ml



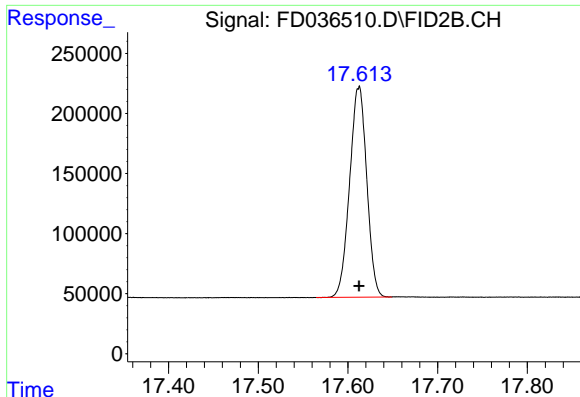
#15 n-Hexacosane (C26)

R.T.: 15.787 min
 Delta R.T.: 0.000 min
 Response: 2549069
 Conc: 20.00 ug/ml



#16 n-Octacosane (C28)

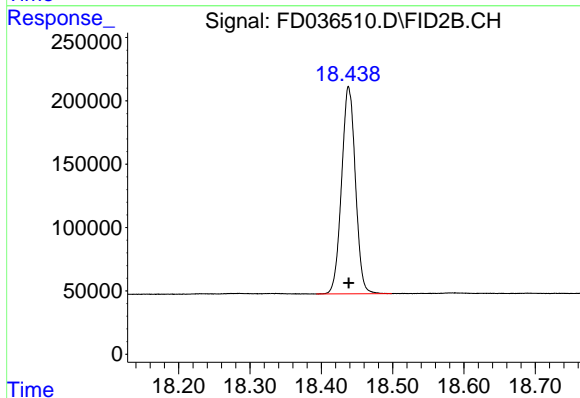
R.T.: 16.731 min
 Delta R.T.: 0.000 min
 Response: 2439994
 Conc: 20.00 ug/ml



#17 n-Tricontane (C30)

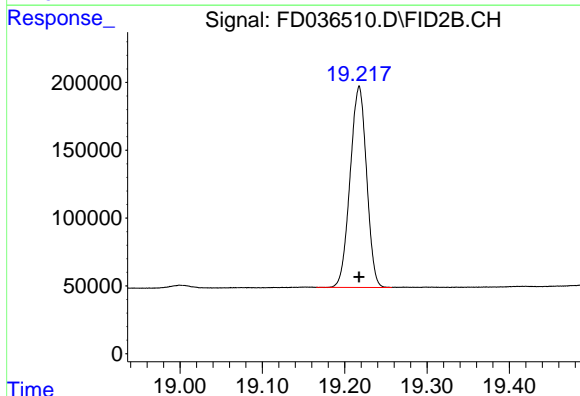
R.T.: 17.612 min
Delta R.T.: 0.000 min
Response: 2325623
Conc: 20.00 ug/ml

Instrument :
FID_D
ClientSampled :



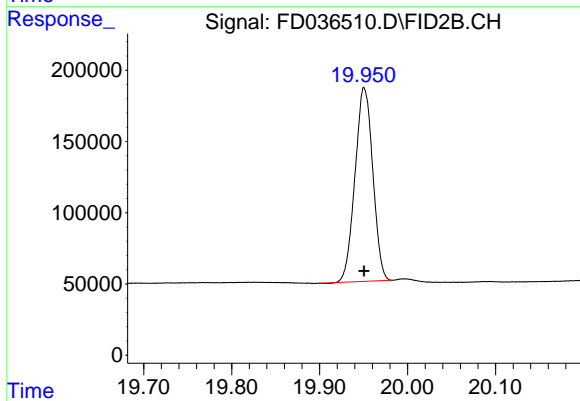
#18 n-Dotriacontane (C32)

R.T.: 18.438 min
Delta R.T.: 0.000 min
Response: 2204786
Conc: 20.00 ug/ml



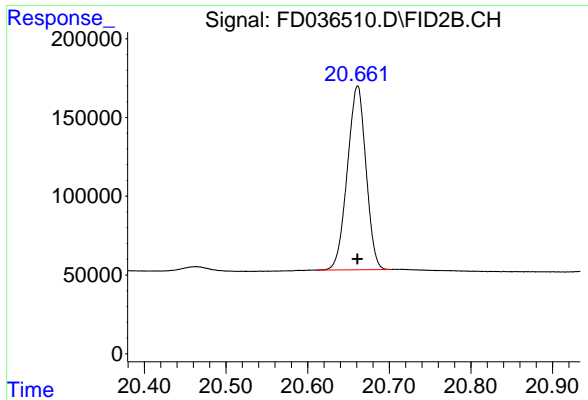
#19 n-Tetratriacontane (C34)

R.T.: 19.218 min
Delta R.T.: 0.000 min
Response: 2060043
Conc: 20.00 ug/ml



#20 n-Hexatriacontane (C36)

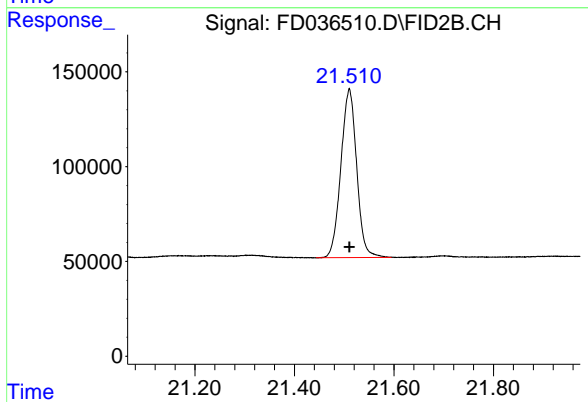
R.T.: 19.951 min
Delta R.T.: 0.000 min
Response: 1909243
Conc: 20.00 ug/ml



#21 n-Octatriacontane (C38)

R.T.: 20.661 min
Delta R.T.: 0.000 min
Response: 1848599
Conc: 20.00 ug/ml

Instrument :
FID_D
ClientSampleId :



#22 n-Tetracontane (C40)

R.T.: 21.510 min
Delta R.T.: 0.000 min
Response: 1957608
Conc: 20.00 ug/ml