

Data Path : Z:\pestpcbsrv\HPCHEM1\FID_D\Data\FD032422AR\
 Data File : FD041709.D
 Signal(s) : FID2B.CH
 Acq On : 25 Mar 2022 2:50
 Operator : UA/NP
 Sample : N2063-08
 Misc :
 ALS Vial : 68 Sample Multiplier: 1

Instrument :
 FID_D
 ClientSampleId :

Integration File: autoint1.e
 Quant Time: Mar 25 04:29:25 2022
 Quant Method : Z:\pestpcbsrv\HPCHEM1\FID_D\methods\Aromatic EPH 032222.M
 Quant Title : GC Extractables
 QLast Update : Tue Mar 22 17:33:18 2022
 Response via : Initial Calibration
 Integrator: ChemStation 6890 Scale Mode: Large solvent peaks clipped

Volume Inj. : 1 µl
 Signal Phase : Rxi-1ms
 Signal Info : 20M x 0.18mm x 0.18µm

Compound	R.T.	Response	Conc Units

System Monitoring Compounds			
4) S 2-Bromonaphthalene (S...	7.350	6115231	38.127 ug/ml
Spiked Amount 50.000		Recovery =	76.25%
6) S 2-Fluorobiphenyl (SURR)	8.199	3901907	39.487 ug/ml
Spiked Amount 50.000 Range 0 - 131		Recovery =	78.97%
11) S ortho-Terphenyl (SURR)	11.230	5103028	26.251 ug/ml
Spiked Amount 50.000		Recovery =	52.50%

Target Compounds

(f)=RT Delta > 1/2 Window

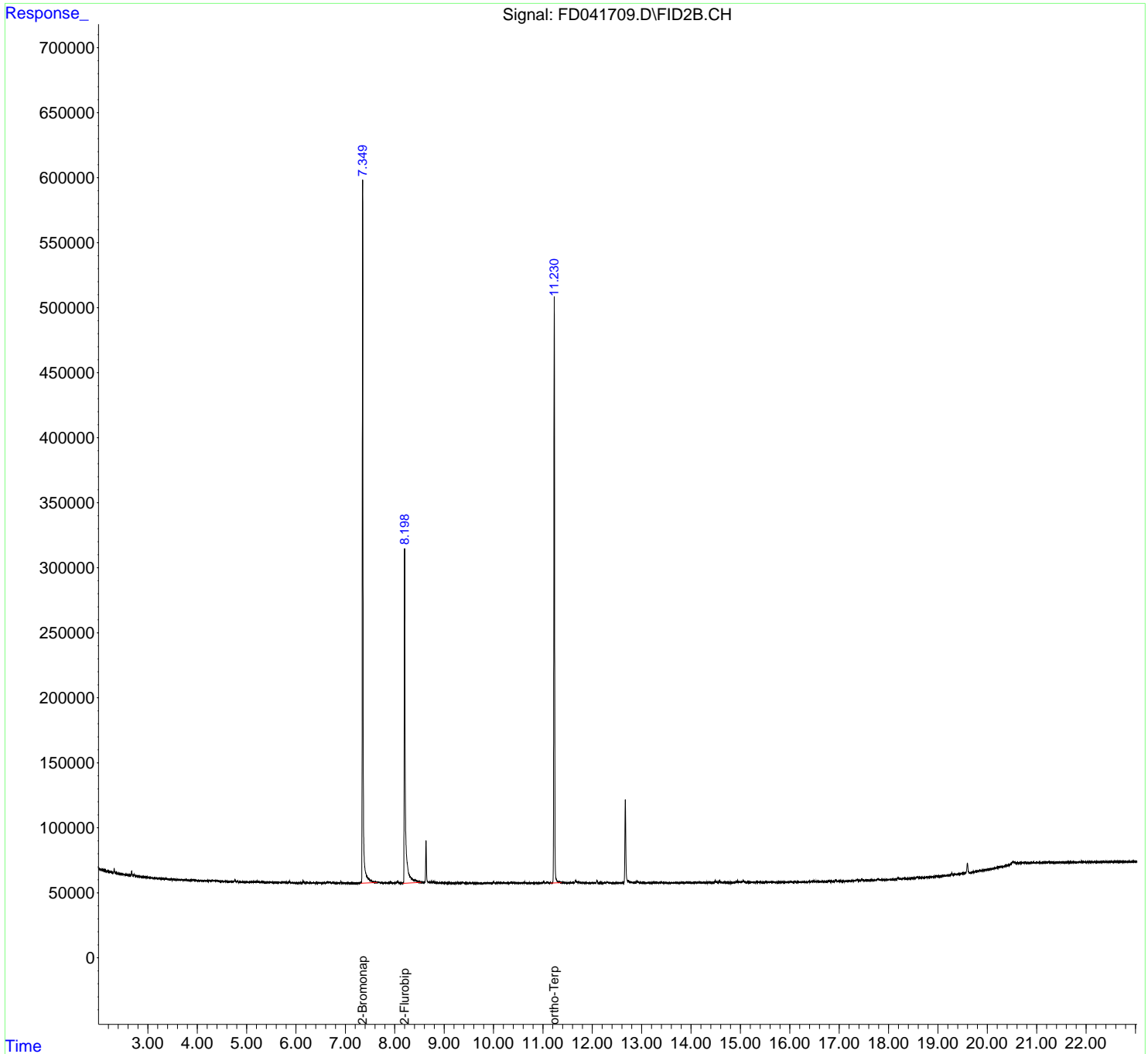
(m)=manual int.

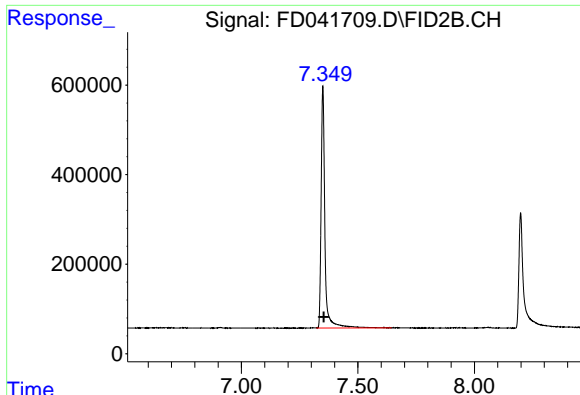
Data Path : Z:\pestpcbsrv\HPCHEM1\FID_D\Data\FD032422AR\
Data File : FD041709.D
Signal(s) : FID2B.CH
Acq On : 25 Mar 2022 2:50
Operator : UA/NP
Sample : N2063-08
Misc :
ALS Vial : 68 Sample Multiplier: 1

Instrument :
FID_D
ClientSampleId :

Integration File: autoint1.e
Quant Time: Mar 25 04:29:25 2022
Quant Method : Z:\pestpcbsrv\HPCHEM1\FID_D\methods\Aromatic EPH 032222.M
Quant Title : GC Extractables
QLast Update : Tue Mar 22 17:33:18 2022
Response via : Initial Calibration
Integrator: ChemStation 6890 Scale Mode: Large solvent peaks clipped

Volume Inj. : 1 µl
Signal Phase : Rxi-1ms
Signal Info : 20M x 0.18mm x 0.18µm

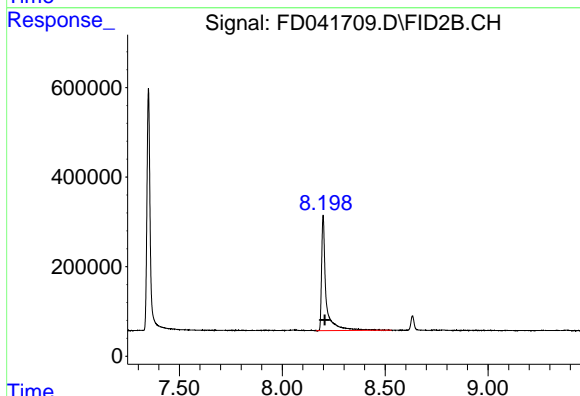




#4 2-Bromonaphthalene (SURR)

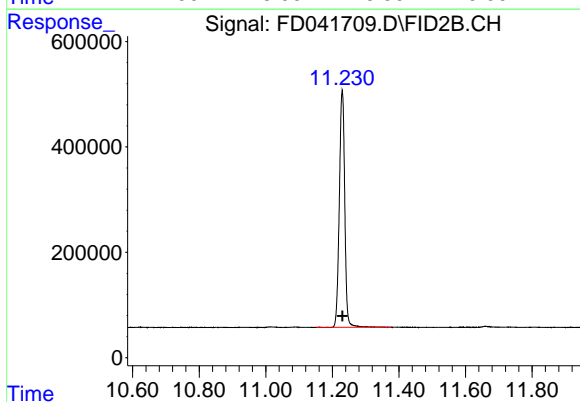
R.T.: 7.350 min
Delta R.T.: -0.003 min
Response: 6115231
Conc: 38.13 ug/ml

Instrument :
FID_D
ClientSampleId :



#6 2-Fluorobiphenyl (SURR)

R.T.: 8.199 min
Delta R.T.: -0.008 min
Response: 3901907
Conc: 39.49 ug/ml



#11 ortho-Terphenyl (SURR)

R.T.: 11.230 min
Delta R.T.: 0.000 min
Response: 5103028
Conc: 26.25 ug/ml