

Data Path : Z:\pestpcbsrv\HPCHEM1\FID_D\Data\FD032423AR\
 Data File : FD045345.D
 Signal(s) : FID2B.ch
 Acq On : 25 Mar 2023 02:29
 Operator : YP/AJ
 Sample : 02070-01
 Misc :
 ALS Vial : 69 Sample Multiplier: 1

Instrument :
 FID_D
 ClientSampleId :

Integration File: autoint1.e
 Quant Time: Mar 25 05:21:30 2023
 Quant Method : Z:\pestpcbsrv\HPCHEM1\FID_D\methods\Aromatic EPH 030123.M
 Quant Title : GC Extractables
 QLast Update : Wed Mar 01 16:43:59 2023
 Response via : Initial Calibration
 Integrator: ChemStation

Volume Inj. : 1 µl
 Signal Phase : Rxi-1ms
 Signal Info : 20M x 0.18mm x 0.18µm

Compound	R.T.	Response	Conc Units

System Monitoring Compounds			
4) S 2-Bromonaphthalene (S...	7.550	6401248	47.169 ug/ml
Spiked Amount 50.000		Recovery =	94.34%
6) S 2-Fluorobiphenyl (SURR)	8.406	4194898	46.852 ug/ml
Spiked Amount 50.000 Range 0 - 131		Recovery =	93.70%
11) S ortho-Terphenyl (SURR)	11.446	5584548	33.550 ug/ml
Spiked Amount 50.000		Recovery =	67.10%
Target Compounds			
2) T Naphthalene (C11.7)	5.887	667841	4.227 ug/ml
3) T 2-Methylnaphthalene (...)	6.935	186244	1.172 ug/ml
7) T Acenaphthene (C15.5)	8.501	140997	0.930 ug/ml
8) T Flouorene (C16.55)	9.280	118180	0.803 ug/ml
9) T Phenanthrene (C19.36)	10.669	281282	1.970 ug/ml
10) T Anthracene (C19.43)	10.743	90929	0.649 ug/ml
12) T Fluoranthene (C21.85)	12.473	205366	1.470 ug/ml
13) T Pyrene (C20.8)	12.768	125393	0.921 ug/ml
14) T Benzo[a]anthracene (C...	14.632	53756	0.422 ug/ml
15) T Chrysene (C27.41)	14.672	108940	0.836 ug/ml
16) T benzo[b]fluoranthene ...	16.174	120413	0.934 ug/ml
17) T Bnezo[k]fluoranthene ...	16.174	120413	0.954 ug/ml
18) T Benzo[a]pyrene (C31.34)	16.490f	63255	0.503 ug/ml
19) T Indeno[1,2,3-cd]pyren...	17.910	165860	1.386 ug/ml
20) T Dibenz[a,h]anthracene...	17.910	165860	1.375 ug/ml

(f)=RT Delta > 1/2 Window

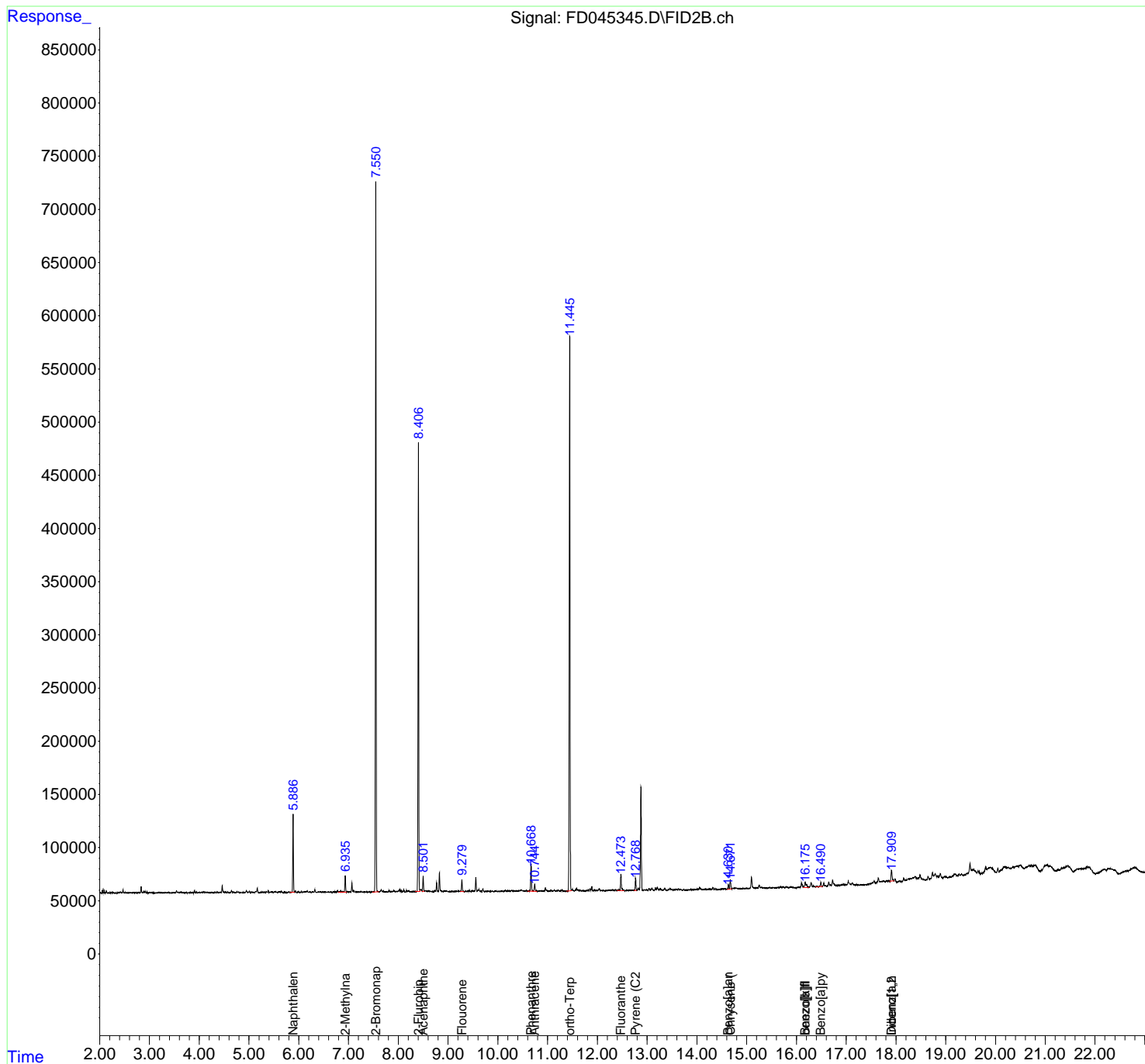
(m)=manual int.

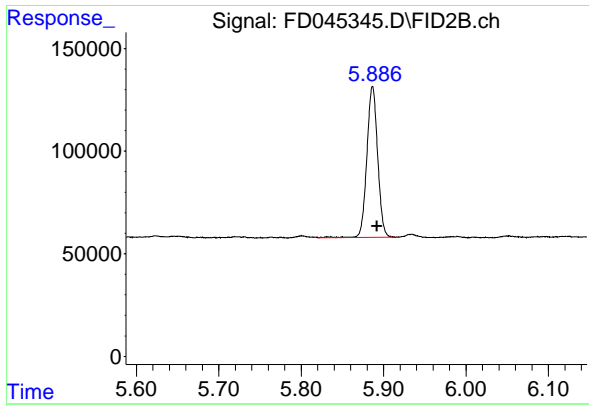
Data Path : Z:\pestpcbsrv\HPCHEM1\FID_D\Data\FD032423AR\
 Data File : FD045345.D
 Signal(s) : FID2B.ch
 Acq On : 25 Mar 2023 02:29
 Operator : YP/AJ
 Sample : 02070-01
 Misc :
 ALS Vial : 69 Sample Multiplier: 1

Instrument :
 FID_D
 ClientSampleId :

Integration File: autoint1.e
 Quant Time: Mar 25 05:21:30 2023
 Quant Method : Z:\pestpcbsrv\HPCHEM1\FID_D\methods\Aromatic EPH 030123.M
 Quant Title : GC Extractables
 QLast Update : Wed Mar 01 16:43:59 2023
 Response via : Initial Calibration
 Integrator: ChemStation

Volume Inj. : 1 µl
 Signal Phase : Rxi-1ms
 Signal Info : 20M x 0.18mm x 0.18µm

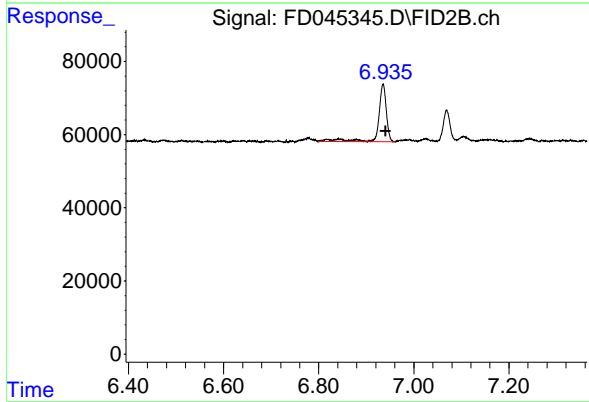




#2 Naphthalene (C11.7)

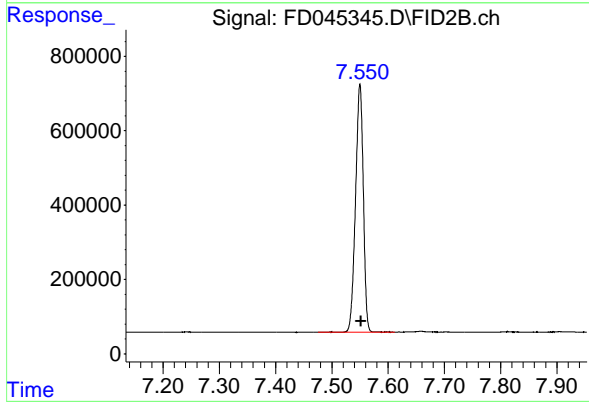
R.T.: 5.887 min
 Delta R.T.: -0.005 min
 Response: 667841
 Conc: 4.23 ug/ml

Instrument : FID_D
 ClientSampleId :



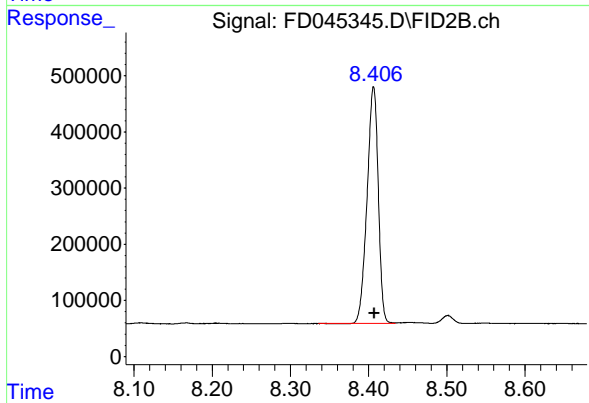
#3 2-Methylnaphthalene (C12.89)

R.T.: 6.935 min
 Delta R.T.: -0.005 min
 Response: 186244
 Conc: 1.17 ug/ml



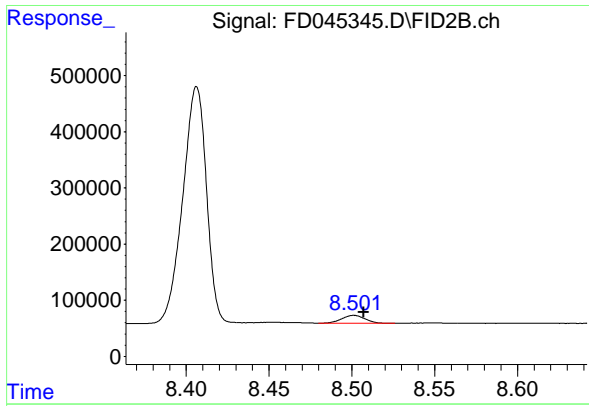
#4 2-Bromonaphthalene (SURR)

R.T.: 7.550 min
 Delta R.T.: -0.002 min
 Response: 6401248
 Conc: 47.17 ug/ml



#6 2-Fluorobiphenyl (SURR)

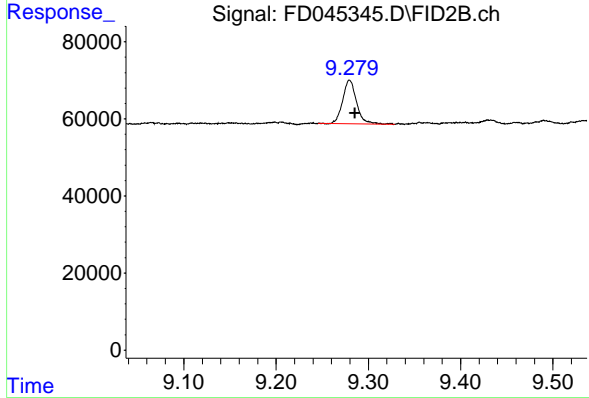
R.T.: 8.406 min
 Delta R.T.: -0.001 min
 Response: 4194898
 Conc: 46.85 ug/ml



#7 Acenaphthene (C15.5)

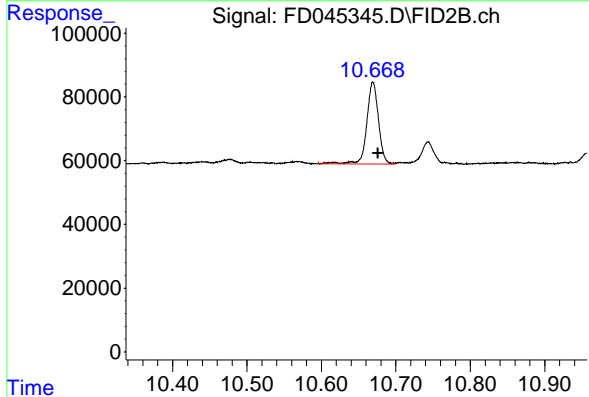
R.T.: 8.501 min
 Delta R.T.: -0.006 min
 Response: 140997
 Conc: 0.93 ug/ml

Instrument :
 FID_D
 ClientSampleId :



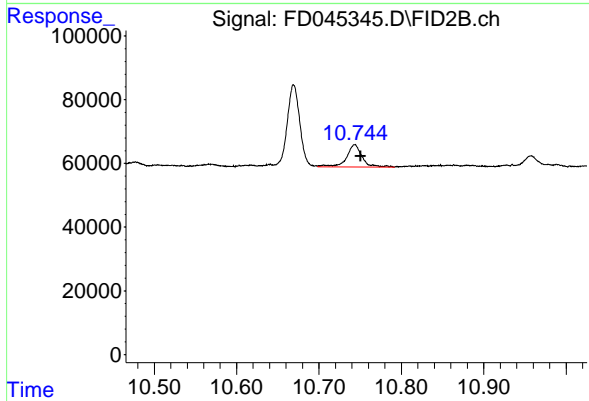
#8 Fluorene (C16.55)

R.T.: 9.280 min
 Delta R.T.: -0.006 min
 Response: 118180
 Conc: 0.80 ug/ml



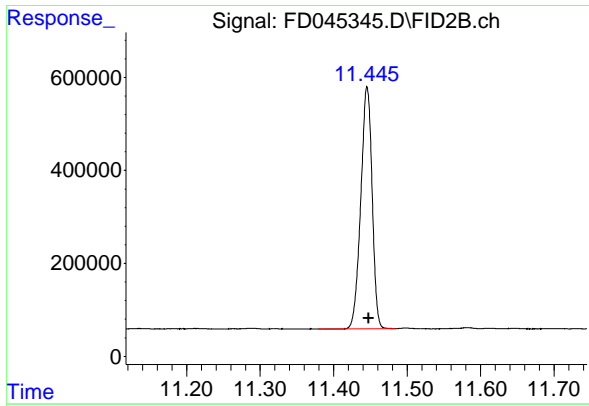
#9 Phenanthrene (C19.36)

R.T.: 10.669 min
 Delta R.T.: -0.007 min
 Response: 281282
 Conc: 1.97 ug/ml



#10 Anthracene (C19.43)

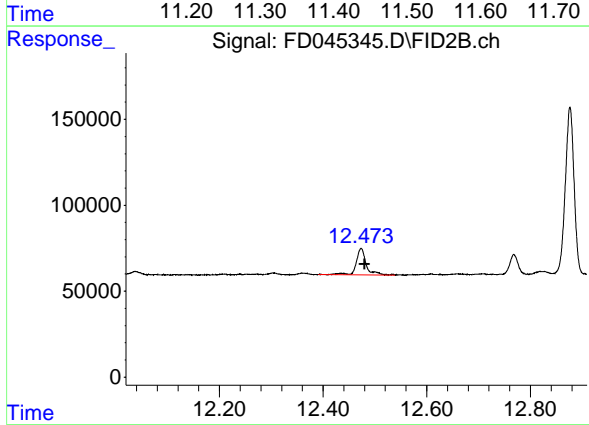
R.T.: 10.743 min
 Delta R.T.: -0.007 min
 Response: 90929
 Conc: 0.65 ug/ml



#11 ortho-Terphenyl (SURR)

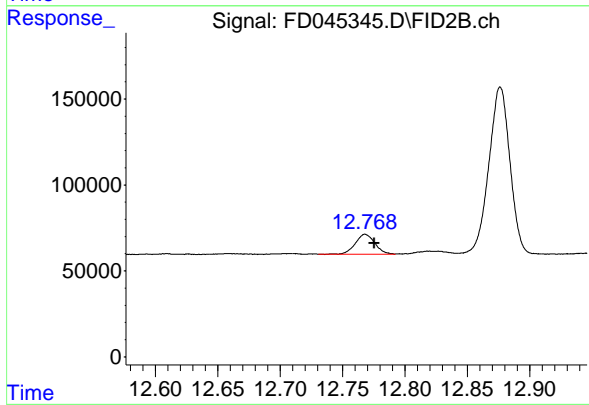
R.T.: 11.446 min
 Delta R.T.: -0.002 min
 Response: 5584548
 Conc: 33.55 ug/ml

Instrument : FID_D
 ClientSampleId :



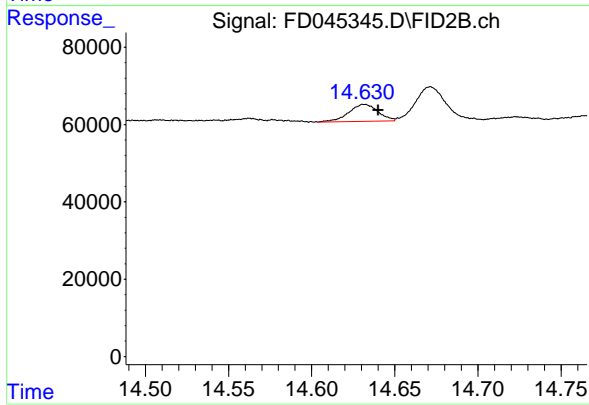
#12 Fluoranthene (C21.85)

R.T.: 12.473 min
 Delta R.T.: -0.007 min
 Response: 205366
 Conc: 1.47 ug/ml



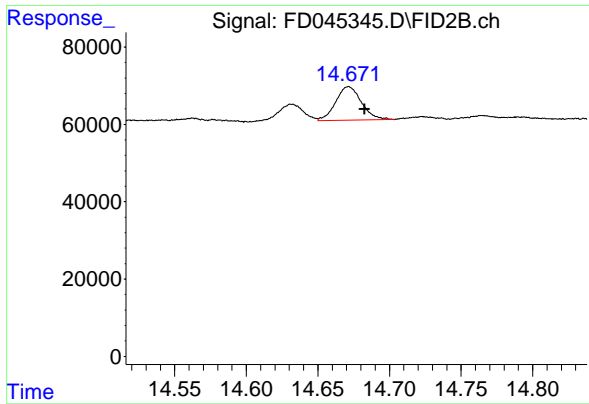
#13 Pyrene (C20.8)

R.T.: 12.768 min
 Delta R.T.: -0.007 min
 Response: 125393
 Conc: 0.92 ug/ml



#14 Benzo[a]anthracene (C26.37)

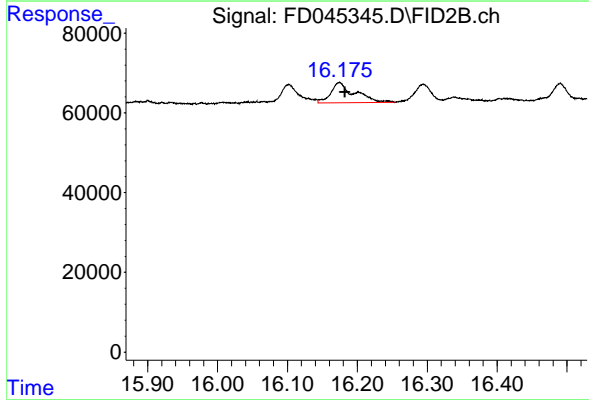
R.T.: 14.632 min
 Delta R.T.: -0.008 min
 Response: 53756
 Conc: 0.42 ug/ml



#15 Chrysene (C27.41)

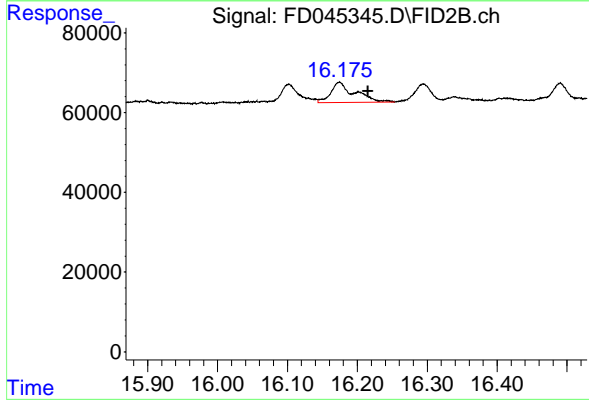
R.T.: 14.672 min
 Delta R.T.: -0.011 min
 Response: 108940
 Conc: 0.84 ug/ml

Instrument : FID_D
 ClientSampleId :



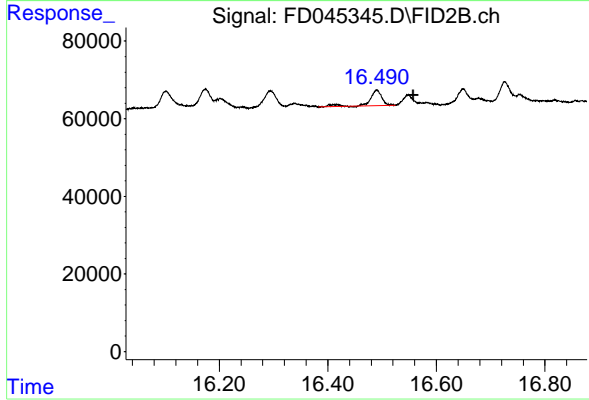
#16 benzo[b]fluoranthene (C30.41)

R.T.: 16.174 min
 Delta R.T.: -0.008 min
 Response: 120413
 Conc: 0.93 ug/ml



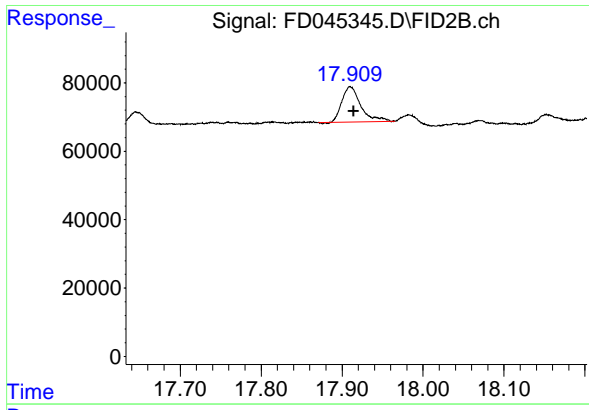
#17 Bnezo[k]fluoranthene (C30.14)

R.T.: 16.174 min
 Delta R.T.: -0.041 min
 Response: 120413
 Conc: 0.95 ug/ml



#18 Benzo[a]pyrene (C31.34)

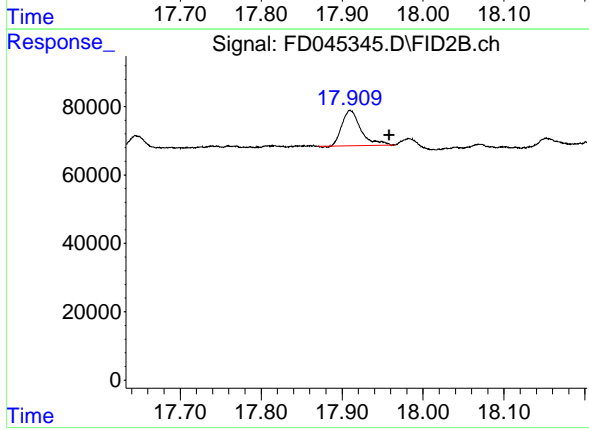
R.T.: 16.490 min
 Delta R.T.: -0.068 min
 Response: 63255
 Conc: 0.50 ug/ml



#19 Indeno[1,2,3-cd]pyrene (C35.01)

R.T.: 17.910 min
Delta R.T.: -0.004 min
Response: 165860
Conc: 1.39 ug/ml

Instrument :
FID_D
ClientSampleId :



#20 Dibenz[a,h]anthracene (C30.36)

R.T.: 17.910 min
Delta R.T.: -0.048 min
Response: 165860
Conc: 1.38 ug/ml