

Data Path : Z:\pestpcbsrv\HPCHEM1\FID_D\Data\FD032621AR\
 Data File : FD036593.D
 Signal(s) : FID2B.CH
 Acq On : 27 Mar 2021 7:59
 Operator : DD\AJ
 Sample : PB135371BS
 Misc :
 ALS Vial : 74 Sample Multiplier: 1

Instrument :
 FID_D
 ClientSampled :

Integration File: autoint1.e
 Quant Time: Mar 29 08:58:05 2021
 Quant Method : Z:\pestpcbsrv\HPCHEM1\FID_D\methods\Aromatic EPH 032321.M
 Quant Title : GC Extractables
 QLast Update : Wed Mar 24 11:18:39 2021
 Response via : Initial Calibration
 Integrator: ChemStation 6890 Scale Mode: Large solvent peaks clipped

Volume Inj. : 1 µl
 Signal Phase : Rxi-1ms
 Signal Info : 20M x 0.18mm x 0.18µm

| Compound | R.T. | Response | Conc Units |
|------------------------------------|--------|------------|--------------|
| ----- | | | |
| System Monitoring Compounds | | | |
| 4) S 2-Bromonaphthalene (S... | 7.594 | 5999156 | 42.655 ug/ml |
| Spiked Amount 50.000 | | Recovery = | 85.31% |
| 6) S 2-Fluorobiphenyl (SURR) | 8.454 | 4000447 | 42.618 ug/ml |
| Spiked Amount 50.000 Range 0 - 131 | | Recovery = | 85.24% |
| 11) S ortho-Terphenyl (SURR) | 11.494 | 5022240 | 32.883 ug/ml |
| Spiked Amount 50.000 | | Recovery = | 65.77% |
| Target Compounds | | | |
| 1) T 1,2,3-Trimethylbenzen... | 4.393 | 4368244 | 29.801 ug/ml |
| 2) T Naphthalene (C11.7) | 5.930 | 4984865 | 31.718 ug/ml |
| 3) T 2-Methylnaphthalene (...) | 6.983 | 5164068 | 32.858 ug/ml |
| 5) T Acenaphthylene (C15.06) | 8.257 | 5015669 | 33.473 ug/ml |
| 7) T Acenaphthene (C15.5) | 8.553 | 5215415 | 33.597 ug/ml |
| 8) T Flouorene (C16.55) | 9.333 | 5266848 | 34.982 ug/ml |
| 9) T Phenanthrene (C19.36) | 10.727 | 5233109 | 35.703 ug/ml |
| 10) T Anthracene (C19.43) | 10.802 | 5196157 | 35.893 ug/ml |
| 12) T Fluoranthene (C21.85) | 12.537 | 5018835 | 35.748 ug/ml |
| 13) T Pyrene (C20.8) | 12.833 | 4908062 | 35.772 ug/ml |
| 14) T Benzo[a]anthracene (C... | 14.700 | 4264314 | 35.907 ug/ml |
| 15) T Chrysene (C27.41) | 14.744 | 4456125 | 36.848 ug/ml |
| 16) T benzo[b]fluoranthene ... | 16.247 | 3978621 | 36.258 ug/ml |
| 17) T Bnezo[k]fluoranthene ... | 16.281 | 3846254 | 36.184 ug/ml |
| 18) T Benzo[a]pyrene (C31.34) | 16.625 | 3839633 | 38.527 ug/ml |
| 19) T Indeno[1,2,3-cd]pyren... | 17.986 | 3524130 | 35.060 ug/ml |
| 20) T Dibenz[a,h]anthracene... | 18.026 | 3685972 | 36.555 ug/ml |
| 21) T Benzo[g,h,i]perylene ... | 18.242 | 3679823 | 36.318 ug/ml |
| ----- | | | |

(f)=RT Delta > 1/2 Window

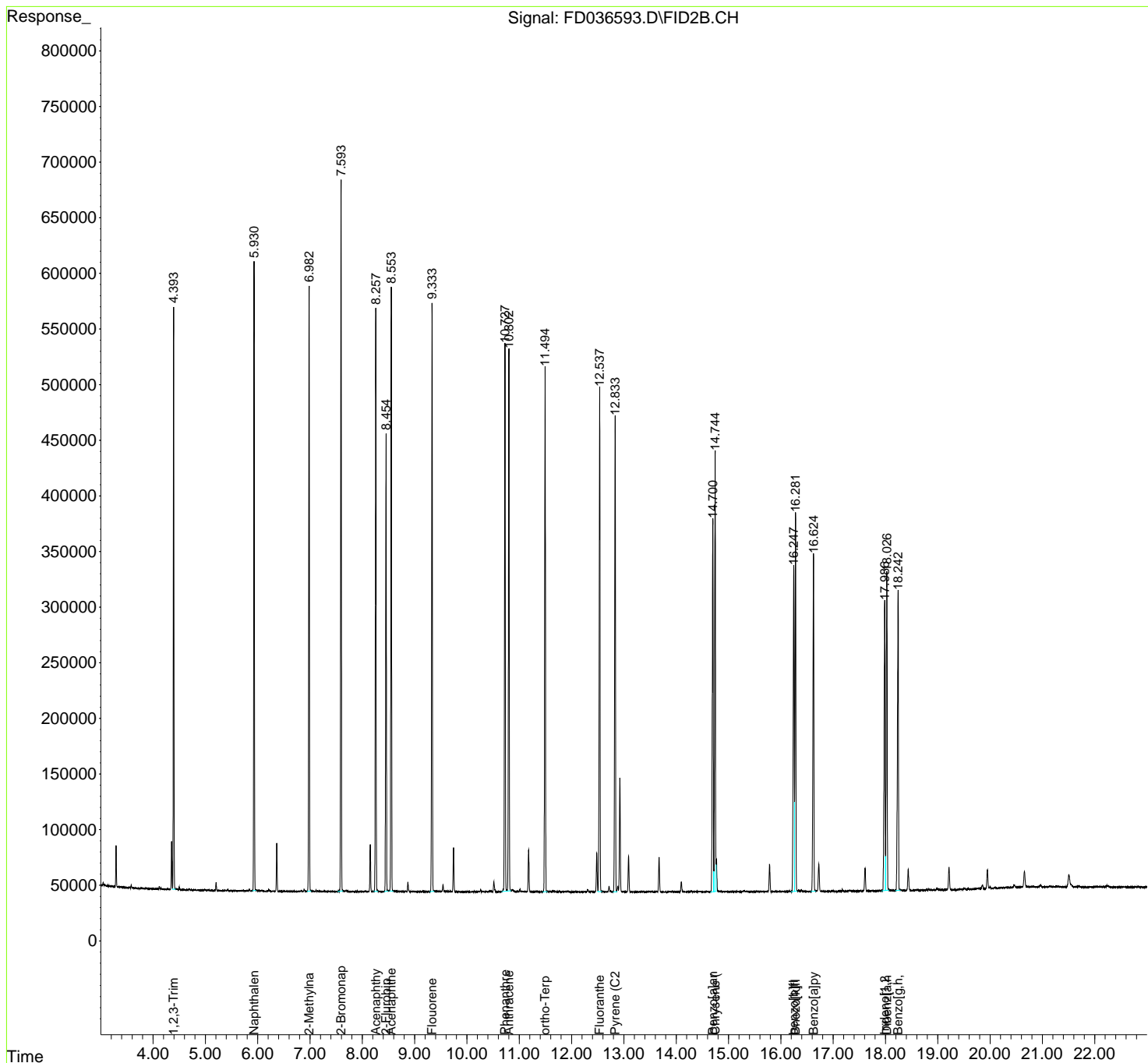
(m)=manual int.

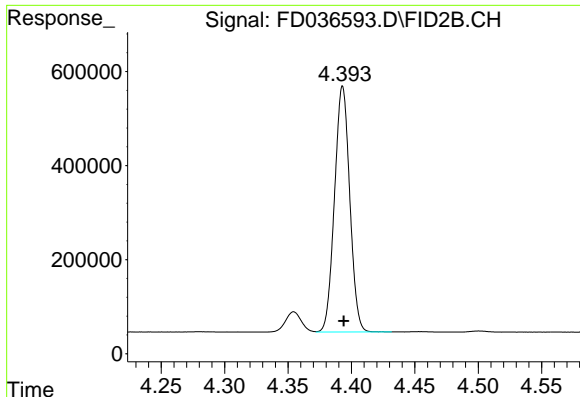
Data Path : Z:\pestpcbsrv\HPCHEM1\FID_D\Data\FD032621AR\
 Data File : FD036593.D
 Signal(s) : FID2B.CH
 Acq On : 27 Mar 2021 7:59
 Operator : DD\AJ
 Sample : PB135371BS
 Misc :
 ALS Vial : 74 Sample Multiplier: 1

Instrument :
 FID_D
 ClientSampled :

Integration File: autoint1.e
 Quant Time: Mar 29 08:58:05 2021
 Quant Method : Z:\pestpcbsrv\HPCHEM1\FID_D\methods\Aromatic EPH 032321.M
 Quant Title : GC Extractables
 QLast Update : Wed Mar 24 11:18:39 2021
 Response via : Initial Calibration
 Integrator: ChemStation 6890 Scale Mode: Large solvent peaks clipped

Volume Inj. : 1 µl
 Signal Phase : Rxi-1ms
 Signal Info : 20M x 0.18mm x 0.18µm

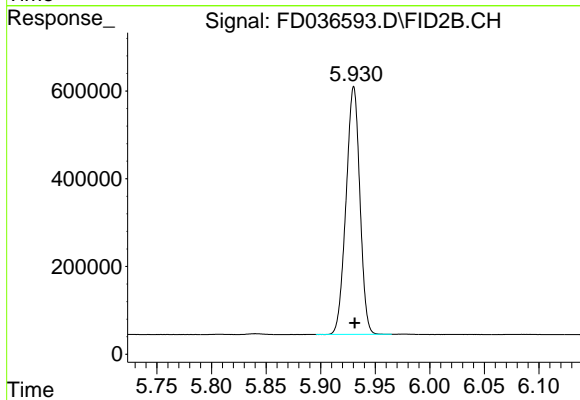




#1 1,2,3-Trimethylbenzene (C10.1)

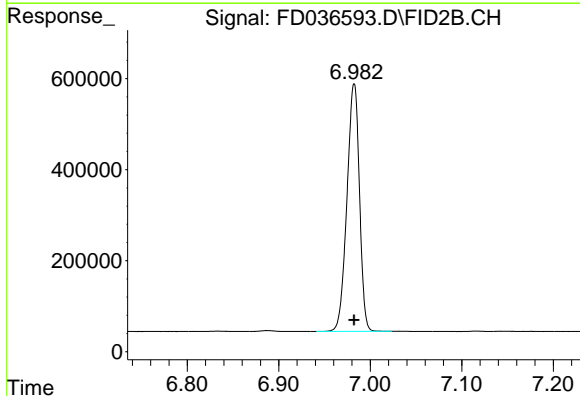
R.T.: 4.393 min
Delta R.T.: 0.000 min
Response: 4368244
Conc: 29.80 ug/ml

Instrument :
FID_D
ClientSampleId :



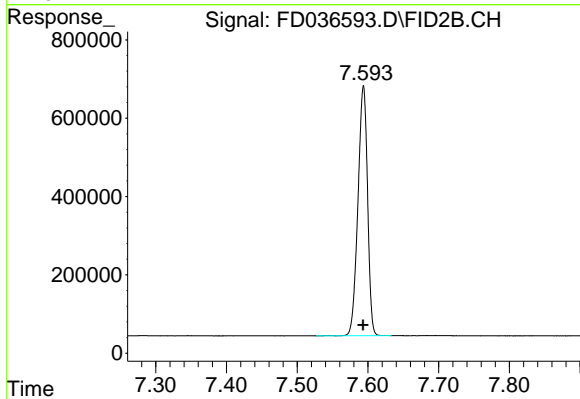
#2 Naphthalene (C11.7)

R.T.: 5.930 min
Delta R.T.: 0.000 min
Response: 4984865
Conc: 31.72 ug/ml



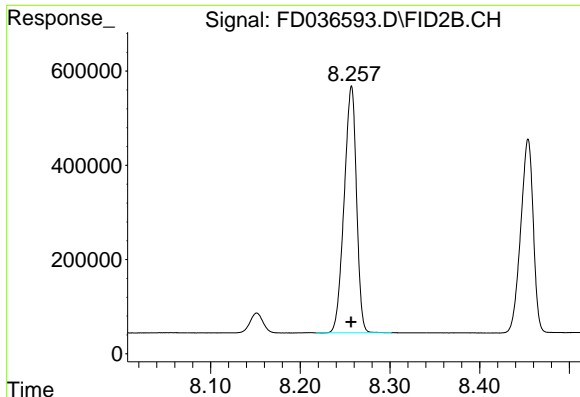
#3 2-Methylnaphthalene (C12.89)

R.T.: 6.983 min
Delta R.T.: 0.000 min
Response: 5164068
Conc: 32.86 ug/ml



#4 2-Bromonaphthalene (SURR)

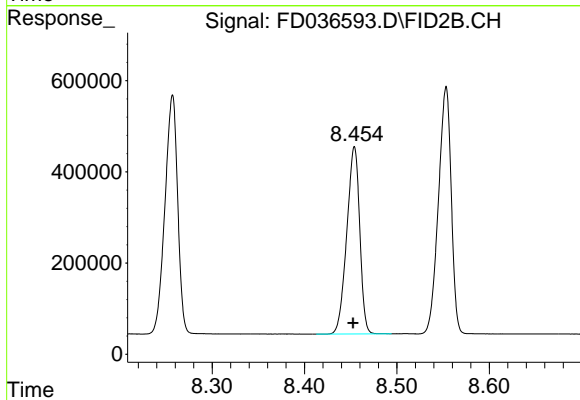
R.T.: 7.594 min
Delta R.T.: 0.000 min
Response: 5999156
Conc: 42.66 ug/ml



#5 Acenaphthylene (C15.06)

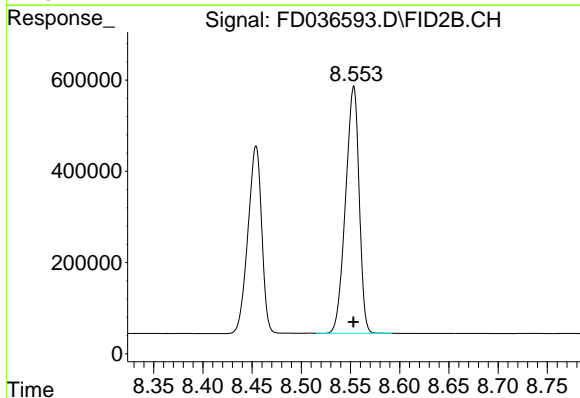
R.T.: 8.257 min
Delta R.T.: 0.000 min
Response: 5015669
Conc: 33.47 ug/ml

Instrument :
FID_D
ClientSampleId :



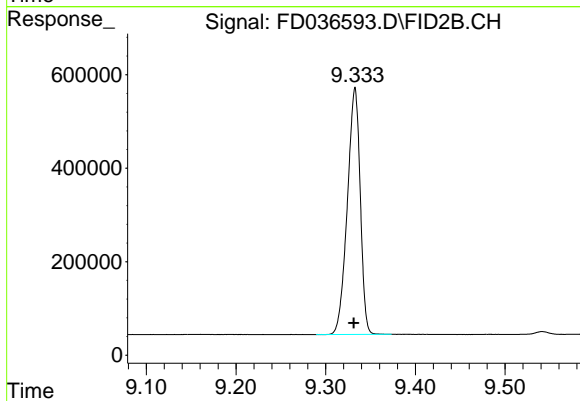
#6 2-Fluorobiphenyl (SURR)

R.T.: 8.454 min
Delta R.T.: 0.001 min
Response: 4000447
Conc: 42.62 ug/ml



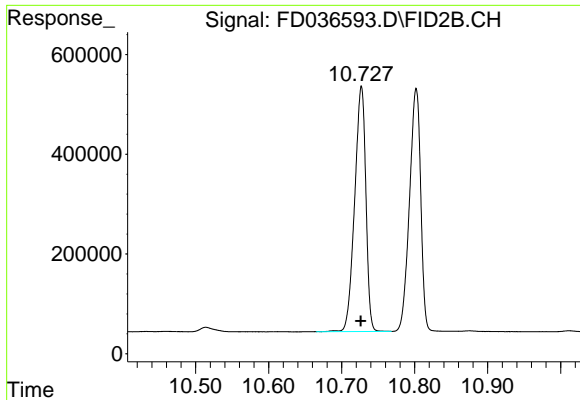
#7 Acenaphthene (C15.5)

R.T.: 8.553 min
Delta R.T.: 0.000 min
Response: 5215415
Conc: 33.60 ug/ml



#8 Fluorene (C16.55)

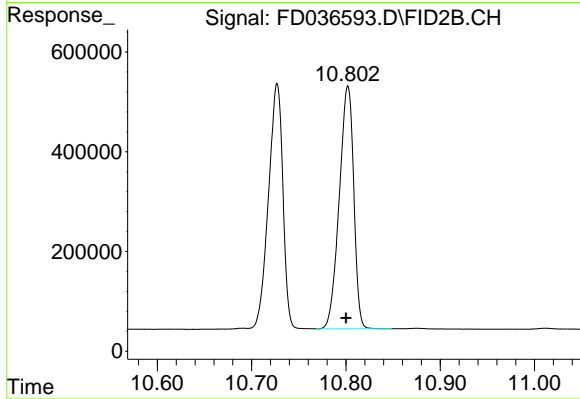
R.T.: 9.333 min
Delta R.T.: 0.001 min
Response: 5266848
Conc: 34.98 ug/ml



#9 Phenanthrene (C19.36)

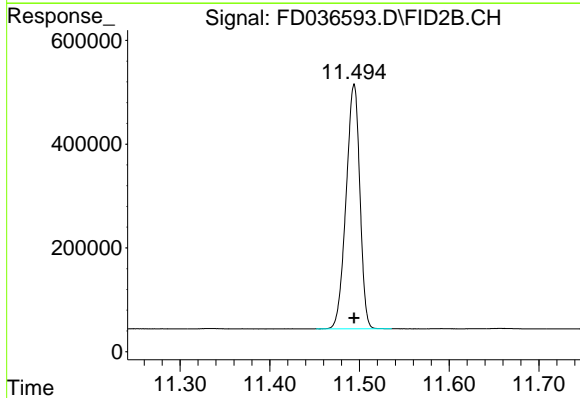
R.T.: 10.727 min
Delta R.T.: 0.001 min
Response: 5233109
Conc: 35.70 ug/ml

Instrument :
FID_D
ClientSampled :



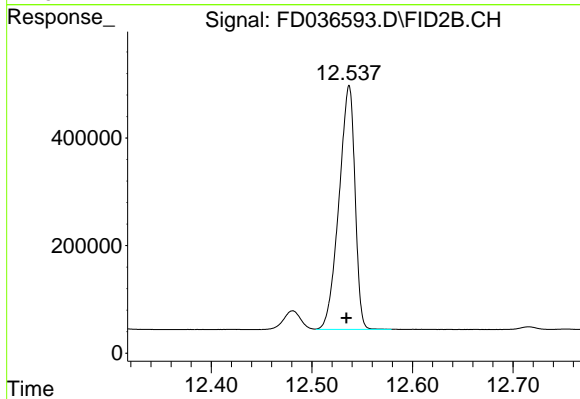
#10 Anthracene (C19.43)

R.T.: 10.802 min
Delta R.T.: 0.002 min
Response: 5196157
Conc: 35.89 ug/ml



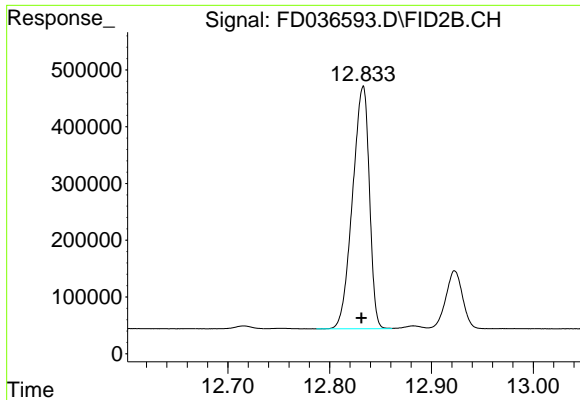
#11 ortho-Terphenyl (SURR)

R.T.: 11.494 min
Delta R.T.: 0.000 min
Response: 5022240
Conc: 32.88 ug/ml



#12 Fluoranthene (C21.85)

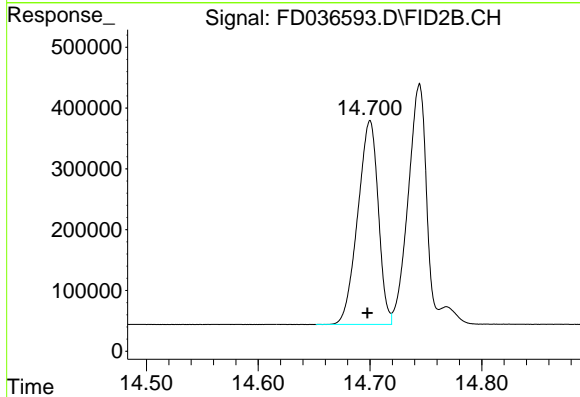
R.T.: 12.537 min
Delta R.T.: 0.003 min
Response: 5018835
Conc: 35.75 ug/ml



#13 Pyrene (C20.8)

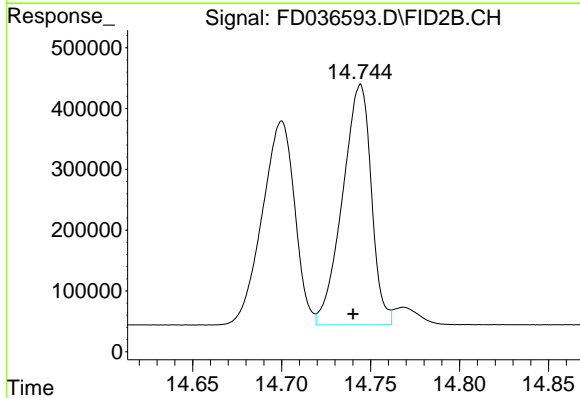
R.T.: 12.833 min
Delta R.T.: 0.002 min
Response: 4908062
Conc: 35.77 ug/ml

Instrument :
FID_D
ClientSampleId :



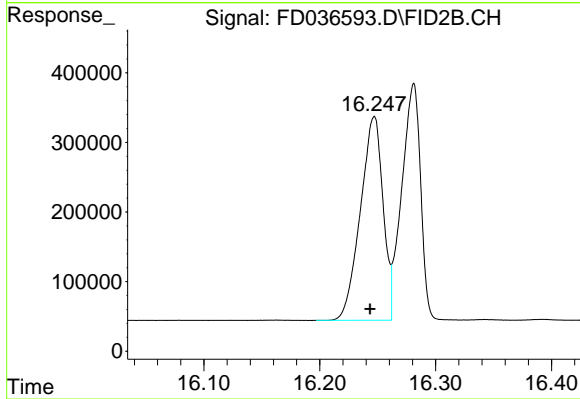
#14 Benzo[a]anthracene (C26.37)

R.T.: 14.700 min
Delta R.T.: 0.002 min
Response: 4264314
Conc: 35.91 ug/ml



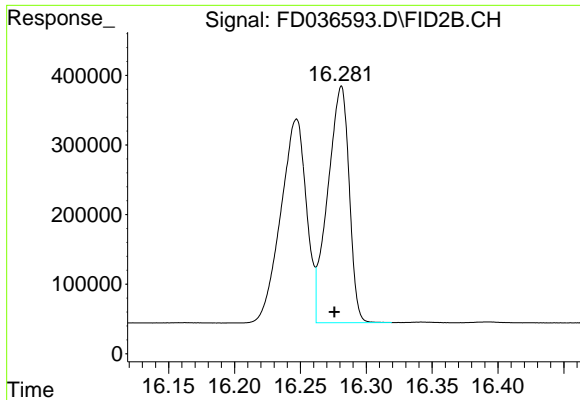
#15 Chrysene (C27.41)

R.T.: 14.744 min
Delta R.T.: 0.004 min
Response: 4456125
Conc: 36.85 ug/ml



#16 benzo[b]fluoranthene (C30.41)

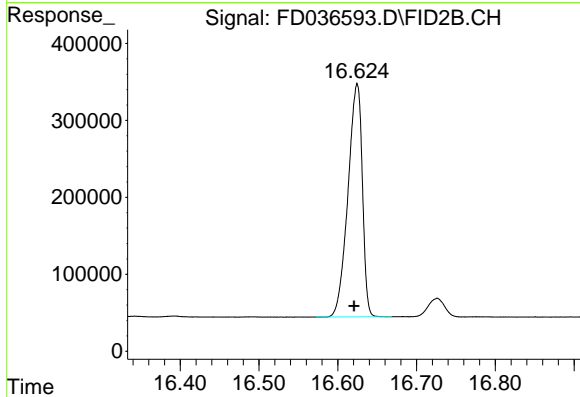
R.T.: 16.247 min
Delta R.T.: 0.003 min
Response: 3978621
Conc: 36.26 ug/ml



#17 Bnezo[k]fluoranthene (C30.14)

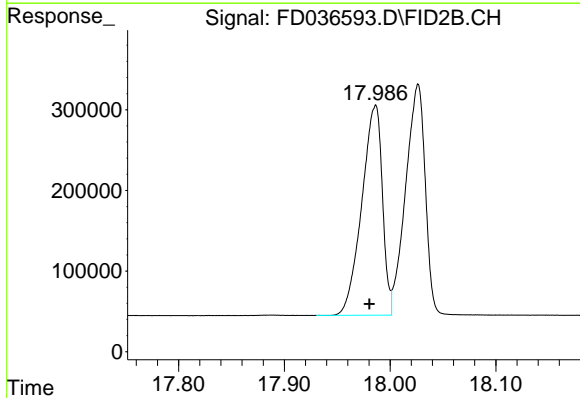
R.T.: 16.281 min
Delta R.T.: 0.005 min
Response: 3846254
Conc: 36.18 ug/ml

Instrument :
FID_D
ClientSampleId :



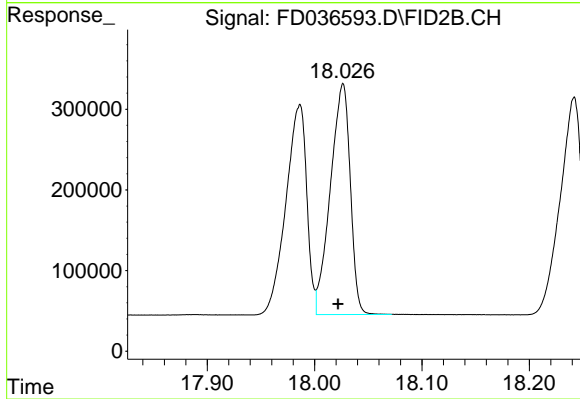
#18 Benzo[a]pyrene (C31.34)

R.T.: 16.625 min
Delta R.T.: 0.004 min
Response: 3839633
Conc: 38.53 ug/ml



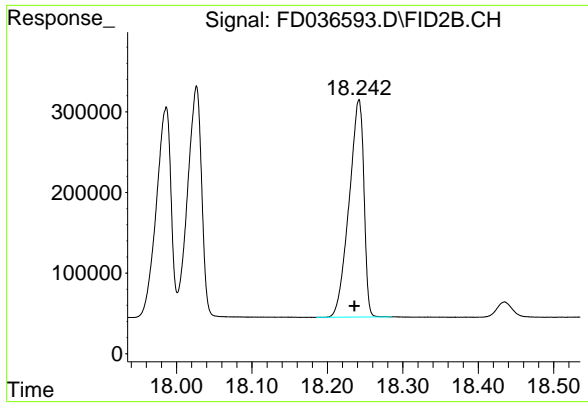
#19 Indeno[1,2,3-cd]pyrene (C35.01)

R.T.: 17.986 min
Delta R.T.: 0.006 min
Response: 3524130
Conc: 35.06 ug/ml



#20 Dibenz[a,h]anthracene (C30.36)

R.T.: 18.026 min
Delta R.T.: 0.005 min
Response: 3685972
Conc: 36.56 ug/ml



#21 Benzo[g,h,i]perylene (C34.01)

R.T.: 18.242 min
Delta R.T.: 0.006 min
Response: 3679823
Conc: 36.32 ug/ml

Instrument :
FID_D
ClientSampleId :