

Data Path : Z:\pestpcbsrv\HPCHEM1\FID_D\Data\FD032621AR\
 Data File : FD036616.D
 Signal(s) : FID2B.CH
 Acq On : 27 Mar 2021 22:13
 Operator : DD\AJ
 Sample : M1831-09
 Misc :
 ALS Vial : 95 Sample Multiplier: 1

Instrument :
 FID_D
 ClientSampleId :
 D32521

Integration File: autoint1.e
 Quant Time: Mar 29 09:00:42 2021
 Quant Method : Z:\pestpcbsrv\HPCHEM1\FID_D\methods\Aromatic EPH 032321.M
 Quant Title : GC Extractables
 QLast Update : Wed Mar 24 11:18:39 2021
 Response via : Initial Calibration
 Integrator: ChemStation 6890 Scale Mode: Large solvent peaks clipped

Volume Inj. : 1 µl
 Signal Phase : Rxi-1ms
 Signal Info : 20M x 0.18mm x 0.18µm

Compound	R.T.	Response	Conc Units

System Monitoring Compounds			
4) S 2-Bromonaphthalene (S...	7.593	5369326	38.177 ug/ml
Spiked Amount 50.000		Recovery =	76.35%
6) S 2-Fluorobiphenyl (SURR)	8.452	3302942	35.187 ug/ml
Spiked Amount 50.000 Range 0 - 131		Recovery =	70.37%
11) S ortho-Terphenyl (SURR)	11.493	4512958	29.549 ug/ml
Spiked Amount 50.000		Recovery =	59.10%

Target Compounds

(f)=RT Delta > 1/2 Window

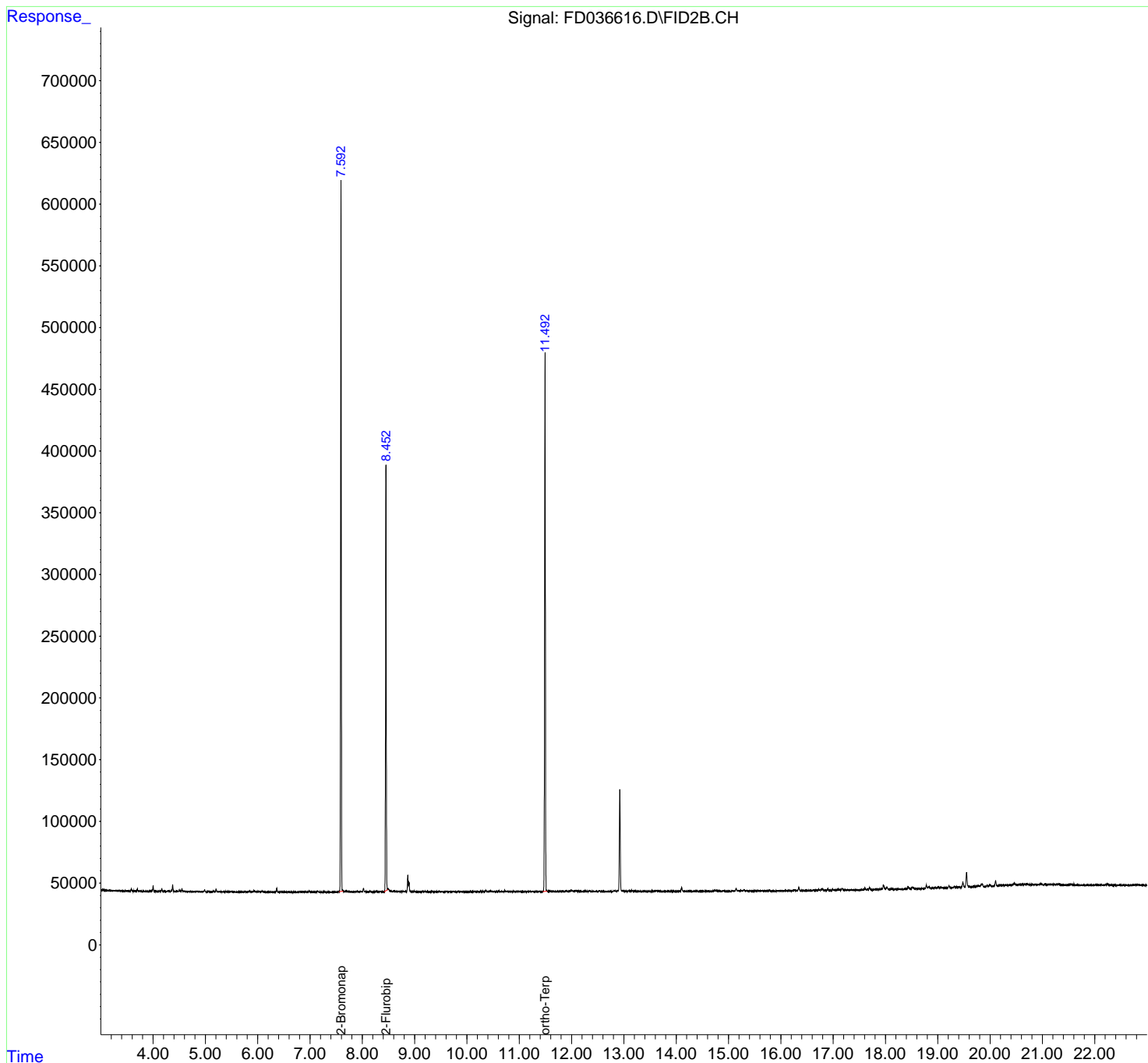
(m)=manual int.

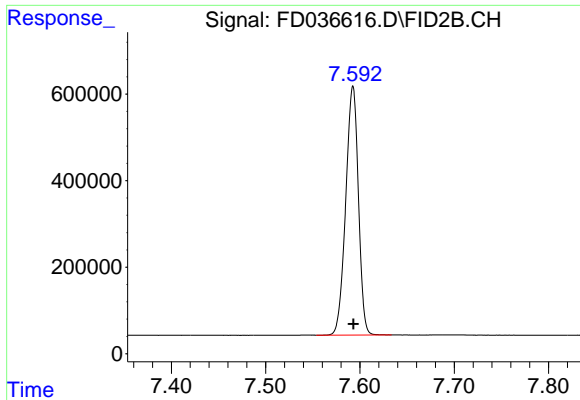
Data Path : Z:\pestpcbsrv\HPCHEM1\FID_D\Data\FD032621AR\
 Data File : FD036616.D
 Signal(s) : FID2B.CH
 Acq On : 27 Mar 2021 22:13
 Operator : DD\AJ
 Sample : M1831-09
 Misc :
 ALS Vial : 95 Sample Multiplier: 1

Instrument :
 FID_D
 ClientSampled :
 D32521

Integration File: autoint1.e
 Quant Time: Mar 29 09:00:42 2021
 Quant Method : Z:\pestpcbsrv\HPCHEM1\FID_D\methods\Aromatic EPH 032321.M
 Quant Title : GC Extractables
 QLast Update : Wed Mar 24 11:18:39 2021
 Response via : Initial Calibration
 Integrator: ChemStation 6890 Scale Mode: Large solvent peaks clipped

Volume Inj. : 1 µl
 Signal Phase : Rxi-1ms
 Signal Info : 20M x 0.18mm x 0.18µm

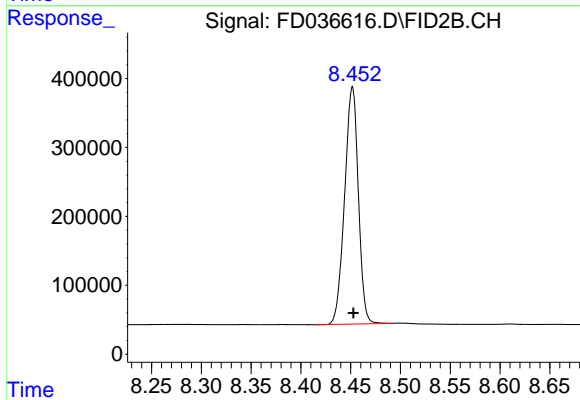




#4 2-Bromonaphthalene (SURR)

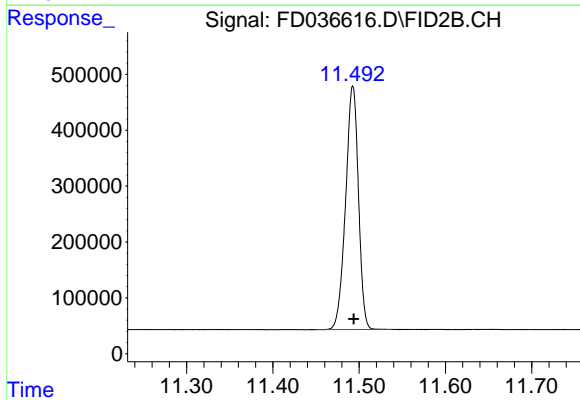
R.T.: 7.593 min
Delta R.T.: 0.000 min
Response: 5369326
Conc: 38.18 ug/ml

Instrument :
FID_D
ClientSampled :
D32521



#6 2-Fluorobiphenyl (SURR)

R.T.: 8.452 min
Delta R.T.: 0.000 min
Response: 3302942
Conc: 35.19 ug/ml



#11 ortho-Terphenyl (SURR)

R.T.: 11.493 min
Delta R.T.: -0.001 min
Response: 4512958
Conc: 29.55 ug/ml