

Data Path : Z:\pestpcbsrv\HPCHEM1\FID\_D\Data\FD040120AR\  
 Data File : FD032770.D  
 Signal(s) : FID2B.CH  
 Acq On : 01 Apr 2020 16:38  
 Operator : DD\AJ  
 Sample : 20 PPM AROMATIC HC STD  
 Misc :  
 ALS Vial : 52 Sample Multiplier: 1

Integration File: autoint1.e  
 Quant Time: Apr 02 01:09:43 2020  
 Quant Method : Z:\pestpcbsrv\HPCHEM1\FID\_D\methods\Aromatic EPH 030320.M  
 Quant Title : GC Extractables  
 QLast Update : Wed Mar 04 03:14:19 2020  
 Response via : Initial Calibration  
 Integrator: ChemStation 6890 Scale Mode: Large solvent peaks clipped

Volume Inj. : 1 µl  
 Signal Phase : Rxi-1ms  
 Signal Info : 20M x 0.18mm x 0.18µm

Compound	R.T.	Response	Conc Units
-----			
System Monitoring Compounds			
4) S 2-Bromonaphthalene (S...	7.608	2935821	22.715 ug/ml
Spiked Amount 50.000		Recovery =	45.43%
6) S 2-Fluorobiphenyl (SURR)	8.469	1886152	21.366 ug/ml
Spiked Amount 50.000 Range 0 - 131		Recovery =	42.73%
11) S ortho-Terphenyl (SURR)	11.504	2909211	20.982 ug/ml
Spiked Amount 50.000		Recovery =	41.96%
Target Compounds			
1) T 1,2,3-Trimethylbenzen...	4.414	3096320	23.277 ug/ml
2) T Naphthalene (C11.7)	5.950	3350110	23.578 ug/ml
3) T 2-Methylnaphthalene (...)	6.999	3238758	22.816 ug/ml
5) T Acenaphthylene (C15.06)	8.272	2985941	21.828 ug/ml
7) T Acenaphthene (C15.5)	8.567	3128503	22.159 ug/ml
8) T Fluorene (C16.55)	9.346	2968384	21.175 ug/ml
9) T Phenanthrene (C19.36)	10.741	2849974	20.394 ug/ml
10) T Anthracene (C19.43)	10.815	2591164	18.508 ug/ml
12) T Fluoranthene (C21.85)	12.551	2766120	19.722 ug/ml
13) T Pyrene (C20.8)	12.848	2734640	19.889 ug/ml
14) T Benzo[a]anthracene (C...	14.719	2624260	20.111 ug/ml
15) T Chrysene (C27.41)	14.761	2726175	20.251 ug/ml
16) T benzo[b]fluoranthene ...	16.271	2760043	21.515 ug/ml
17) T Bnezo[k]fluoranthene ...	16.303	2744599	20.907 ug/ml
18) T Benzo[a]pyrene (C31.34)	16.650	2713851	21.303 ug/ml
19) T Indeno[1,2,3-cd]pyren...	18.018	2697965	22.641 ug/ml
20) T Dibenz[a,h]anthracene...	18.055	2863433	22.647 ug/ml
21) T Benzo[g,h,i]perylene ...	18.272	2736023	23.144 ug/ml
-----			

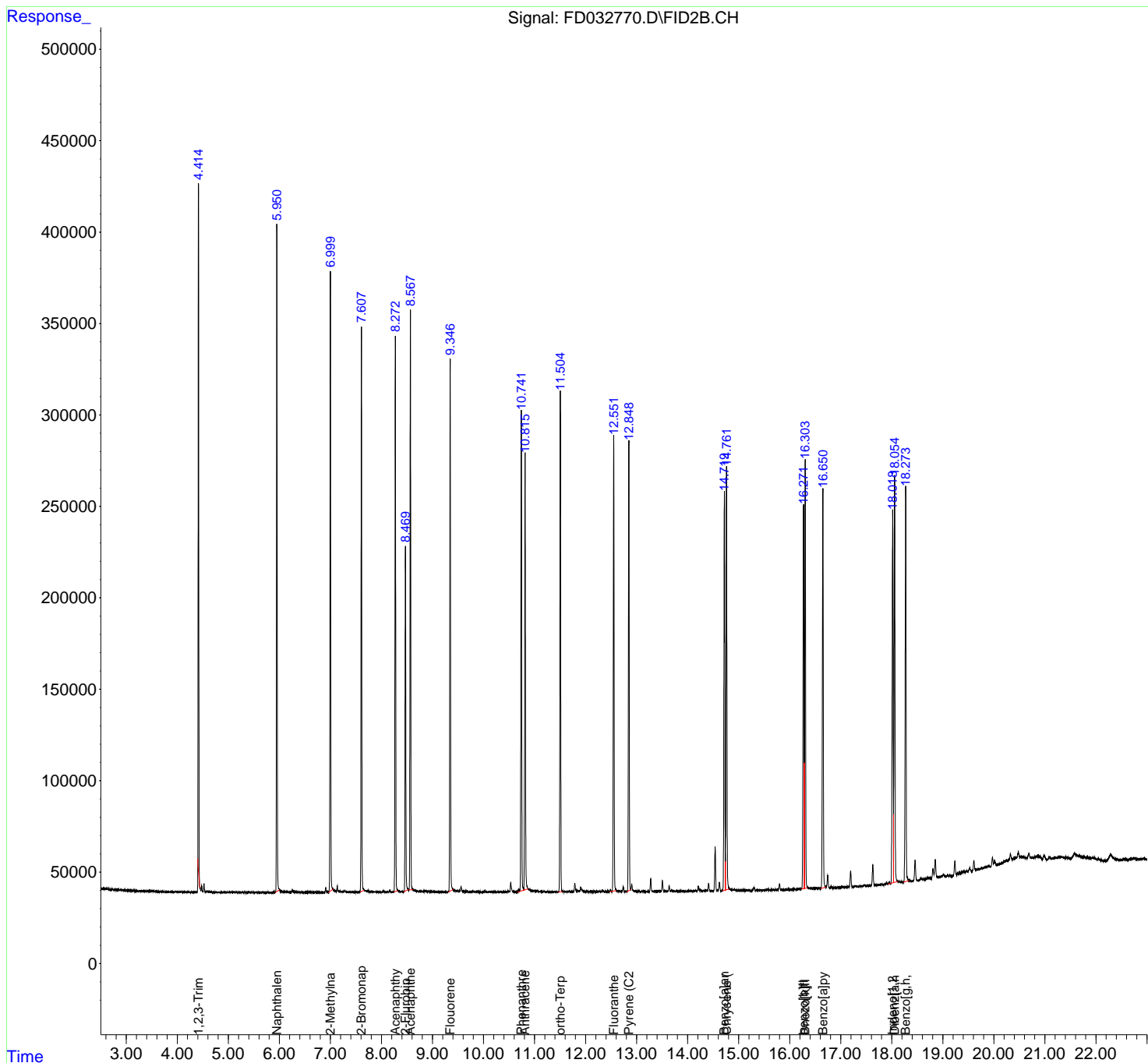
(f)=RT Delta > 1/2 Window

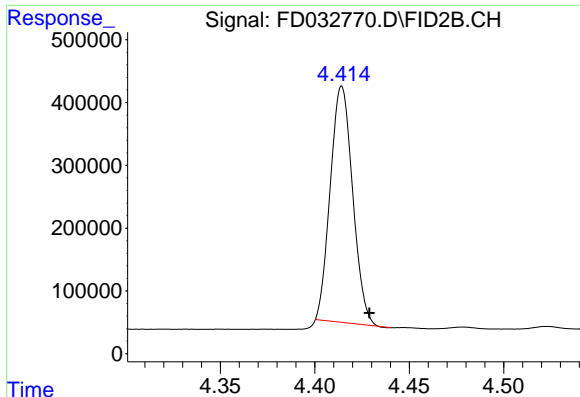
(m)=manual int.

Data Path : Z:\pestpcbsrv\HPCHEM1\FID\_D\Data\FD040120AR\  
 Data File : FD032770.D  
 Signal(s) : FID2B.CH  
 Acq On : 01 Apr 2020 16:38  
 Operator : DD\AJ  
 Sample : 20 PPM AROMATIC HC STD  
 Misc :  
 ALS Vial : 52 Sample Multiplier: 1

Integration File: autoint1.e  
 Quant Time: Apr 02 01:09:43 2020  
 Quant Method : Z:\pestpcbsrv\HPCHEM1\FID\_D\methods\Aromatic EPH 030320.M  
 Quant Title : GC Extractables  
 QLast Update : Wed Mar 04 03:14:19 2020  
 Response via : Initial Calibration  
 Integrator: ChemStation 6890 Scale Mode: Large solvent peaks clipped

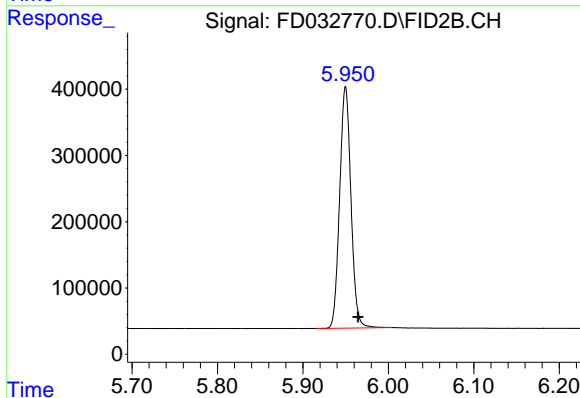
Volume Inj. : 1 µl  
 Signal Phase : Rxi-1ms  
 Signal Info : 20M x 0.18mm x 0.18µm





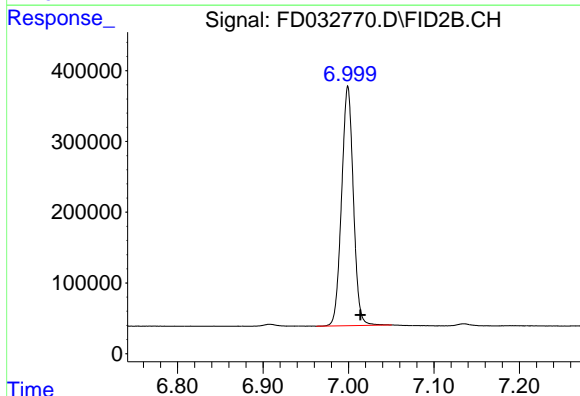
#1 1,2,3-Trimethylbenzene (C10.1)

R.T.: 4.414 min  
Delta R.T.: -0.015 min  
Response: 3096320  
Conc: 23.28 ug/ml



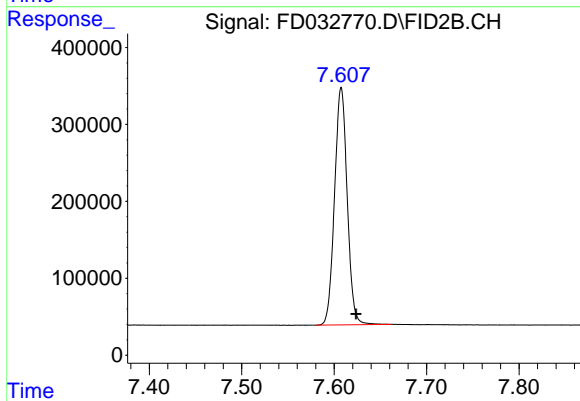
#2 Naphthalene (C11.7)

R.T.: 5.950 min  
Delta R.T.: -0.015 min  
Response: 3350110  
Conc: 23.58 ug/ml



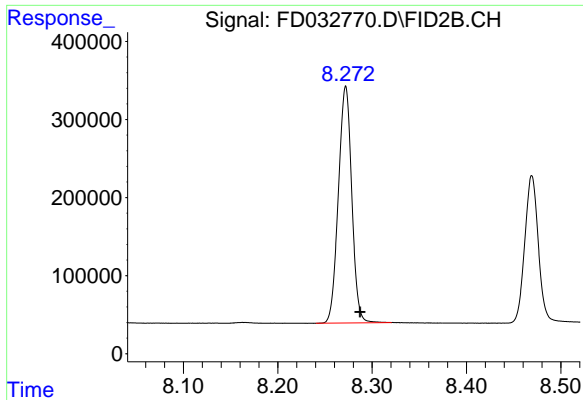
#3 2-Methylnaphthalene (C12.89)

R.T.: 6.999 min  
Delta R.T.: -0.015 min  
Response: 3238758  
Conc: 22.82 ug/ml



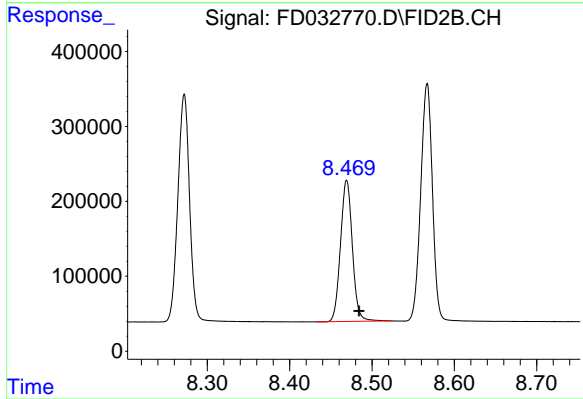
#4 2-Bromonaphthalene (SURR)

R.T.: 7.608 min  
Delta R.T.: -0.016 min  
Response: 2935821  
Conc: 22.71 ug/ml



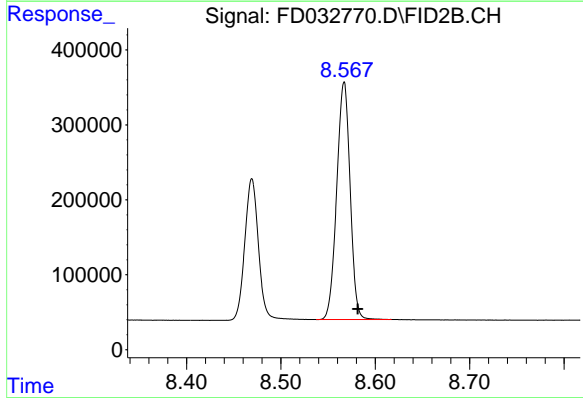
#5 Acenaphthylene (C15.06)

R.T.: 8.272 min  
Delta R.T.: -0.015 min  
Response: 2985941  
Conc: 21.83 ug/ml



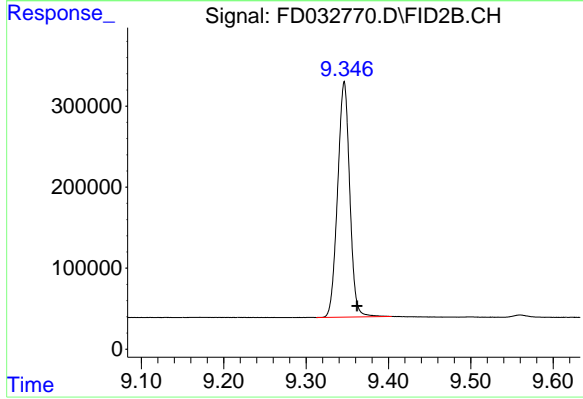
#6 2-Fluorobiphenyl (SURR)

R.T.: 8.469 min  
Delta R.T.: -0.015 min  
Response: 1886152  
Conc: 21.37 ug/ml



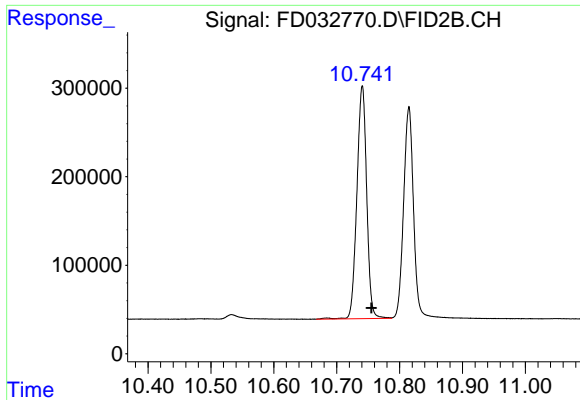
#7 Acenaphthene (C15.5)

R.T.: 8.567 min  
Delta R.T.: -0.015 min  
Response: 3128503  
Conc: 22.16 ug/ml



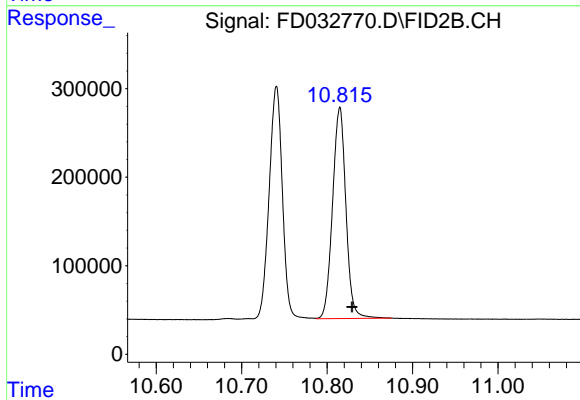
#8 Fluorene (C16.55)

R.T.: 9.346 min  
Delta R.T.: -0.015 min  
Response: 2968384  
Conc: 21.18 ug/ml



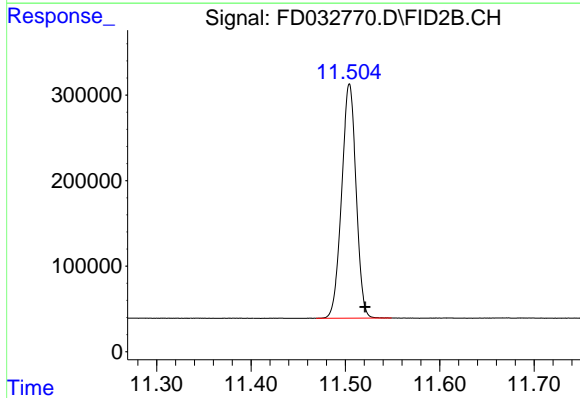
#9 Phenanthrene (C19.36)

R.T.: 10.741 min  
Delta R.T.: -0.015 min  
Response: 2849974  
Conc: 20.39 ug/ml



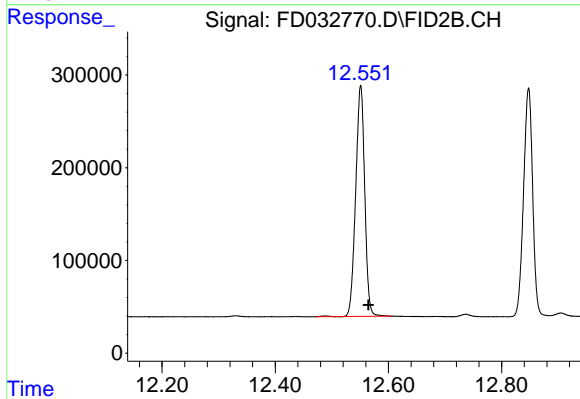
#10 Anthracene (C19.43)

R.T.: 10.815 min  
Delta R.T.: -0.014 min  
Response: 2591164  
Conc: 18.51 ug/ml



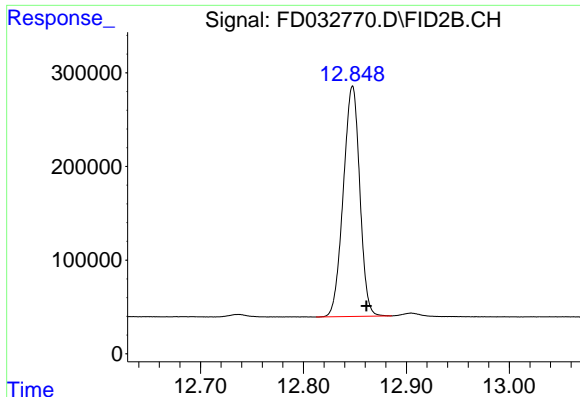
#11 ortho-Terphenyl (SURR)

R.T.: 11.504 min  
Delta R.T.: -0.016 min  
Response: 2909211  
Conc: 20.98 ug/ml



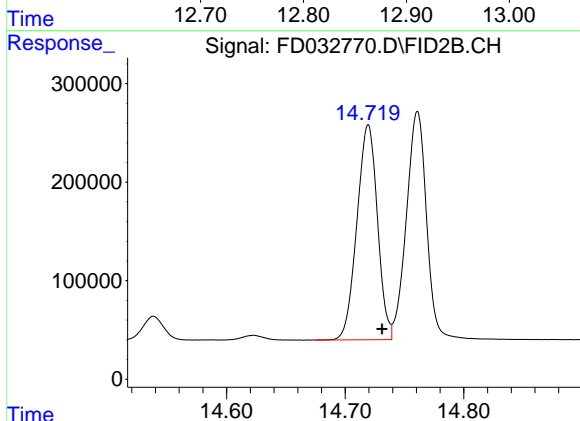
#12 Fluoranthene (C21.85)

R.T.: 12.551 min  
Delta R.T.: -0.014 min  
Response: 2766120  
Conc: 19.72 ug/ml



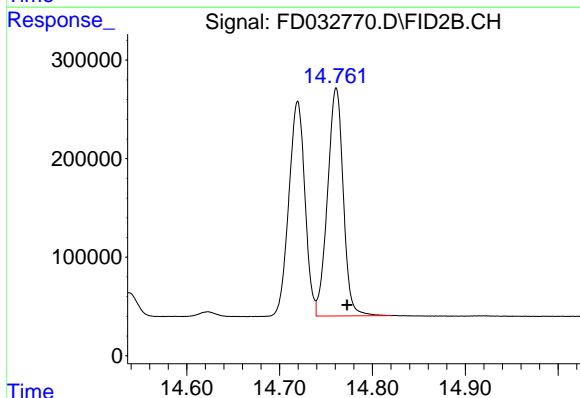
#13 Pyrene (C20.8)

R.T.: 12.848 min  
Delta R.T.: -0.013 min  
Response: 2734640  
Conc: 19.89 ug/ml



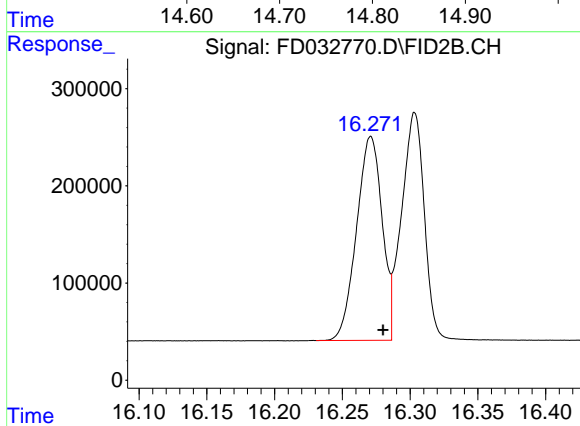
#14 Benzo[a]anthracene (C26.37)

R.T.: 14.719 min  
Delta R.T.: -0.012 min  
Response: 2624260  
Conc: 20.11 ug/ml



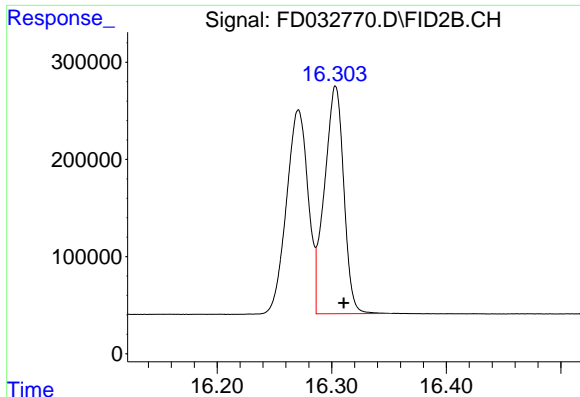
#15 Chrysene (C27.41)

R.T.: 14.761 min  
Delta R.T.: -0.012 min  
Response: 2726175  
Conc: 20.25 ug/ml



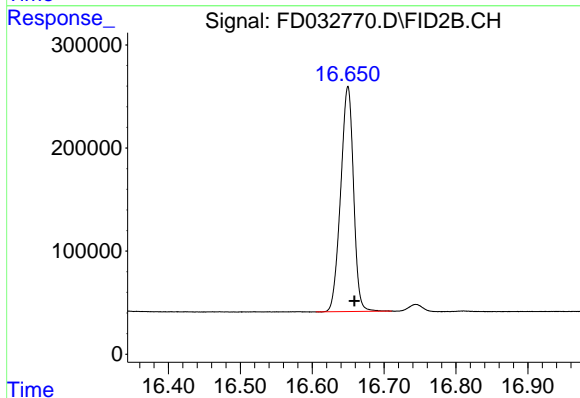
#16 benzo[b]fluoranthene (C30.41)

R.T.: 16.271 min  
Delta R.T.: -0.009 min  
Response: 2760043  
Conc: 21.51 ug/ml



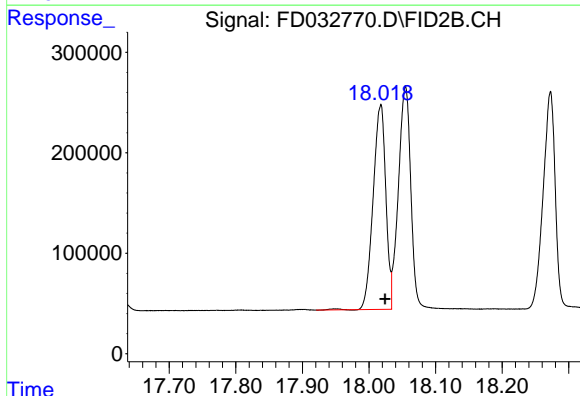
#17 Bnezo[k]fluoranthene (C30.14)

R.T.: 16.303 min  
Delta R.T.: -0.007 min  
Response: 2744599  
Conc: 20.91 ug/ml



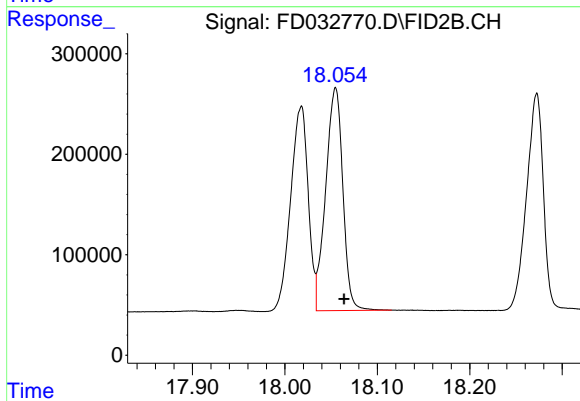
#18 Benzo[a]pyrene (C31.34)

R.T.: 16.650 min  
Delta R.T.: -0.009 min  
Response: 2713851  
Conc: 21.30 ug/ml



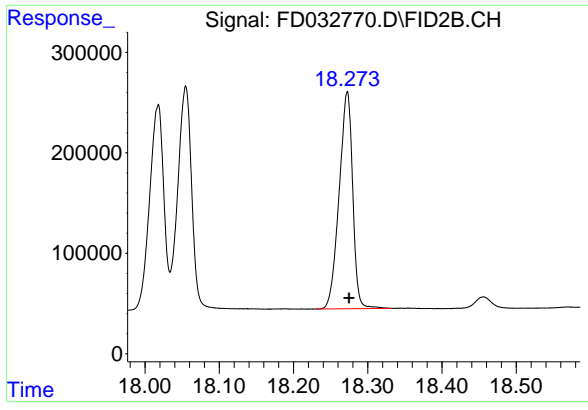
#19 Indeno[1,2,3-cd]pyrene (C35.01)

R.T.: 18.018 min  
Delta R.T.: -0.006 min  
Response: 2697965  
Conc: 22.64 ug/ml



#20 Dibenz[a,h]anthracene (C30.36)

R.T.: 18.055 min  
Delta R.T.: -0.009 min  
Response: 2863433  
Conc: 22.65 ug/ml



#21 Benzo[g,h,i]perylene (C34.01)

R.T.: 18.272 min  
Delta R.T.: -0.002 min  
Response: 2736023  
Conc: 23.14 ug/ml