

Data Path : Z:\pestpcbsrv\HPCHEM1\FID_D\Data\FD040221AL\
 Data File : FD036696.D
 Signal(s) : FID2B.CH
 Acq On : 02 Apr 2021 15:16
 Operator : DD\AJ
 Sample : PB135504BL
 Misc :
 ALS Vial : 54 Sample Multiplier: 1

Instrument :
 FID_D
 ClientSampleId :
 PB135504BL

Integration File: autoint1.e
 Quant Time: Apr 05 09:28:47 2021
 Quant Method : Z:\pestpcbsrv\HPCHEM1\FID_D\methods\Alaphatic EPH 032321.M
 Quant Title : GC Extractables
 QLast Update : Wed Mar 24 09:10:29 2021
 Response via : Initial Calibration
 Integrator: ChemStation 6890 Scale Mode: Large solvent peaks clipped

Volume Inj. : 1 ul
 Signal Phase : Rxi-1ms
 Signal Info : 20M x 0.18mm x 0.18um

Compound	R.T.	Response	Conc Units

System Monitoring Compounds			
9) S ortho-Terphenyl (SURR)	11.493	9140041	61.685 ug/ml
Spiked Amount	50.000	Recovery	= 123.37%
12) S 1-chlorooctadecane (S...	12.924	6894901	59.245 ug/ml
Spiked Amount	50.000	Recovery	= 118.49%

Target Compounds

(f)=RT Delta > 1/2 Window

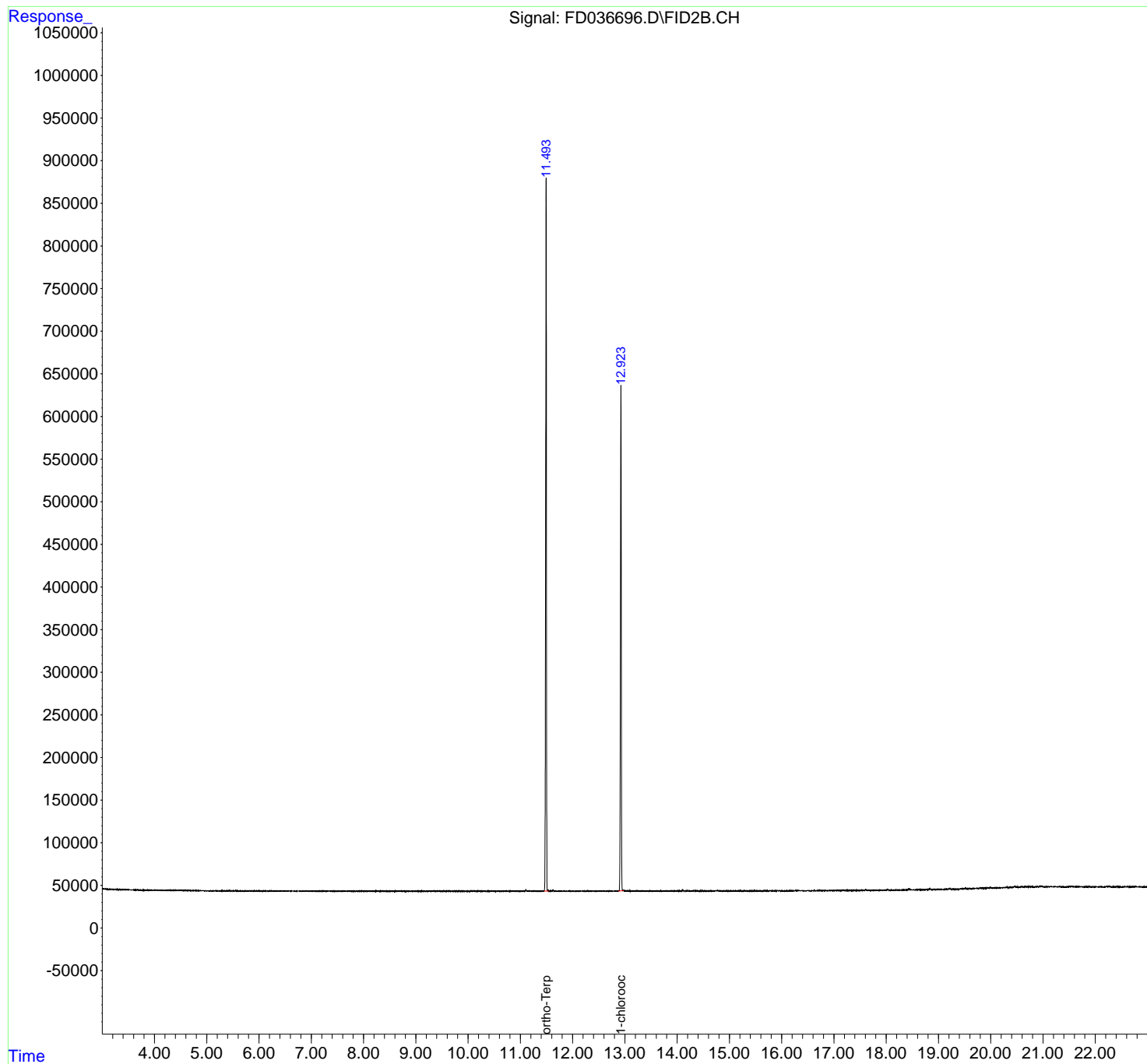
(m)=manual int.

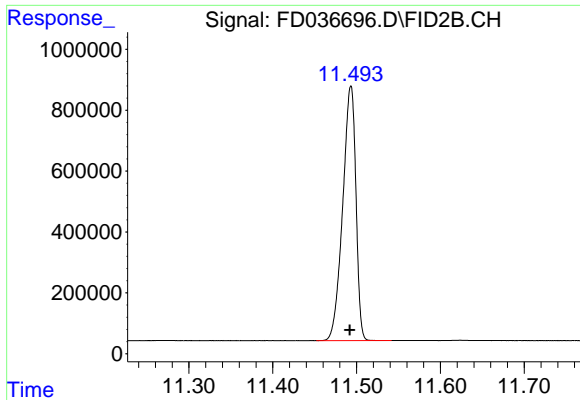
Data Path : Z:\pestpcbsrv\HPCHEM1\FID_D\Data\FD040221AL\
Data File : FD036696.D
Signal(s) : FID2B.CH
Acq On : 02 Apr 2021 15:16
Operator : DD\AJ
Sample : PB135504BL
Misc :
ALS Vial : 54 Sample Multiplier: 1

Instrument :
FID_D
ClientSampleID :
PB135504BL

Integration File: autoint1.e
Quant Time: Apr 05 09:28:47 2021
Quant Method : Z:\pestpcbsrv\HPCHEM1\FID_D\methods\Alaphatic EPH 032321.M
Quant Title : GC Extractables
QLast Update : Wed Mar 24 09:10:29 2021
Response via : Initial Calibration
Integrator: ChemStation 6890 Scale Mode: Large solvent peaks clipped

Volume Inj. : 1 ul
Signal Phase : Rxi-1ms
Signal Info : 20M x 0.18mm x 0.18um

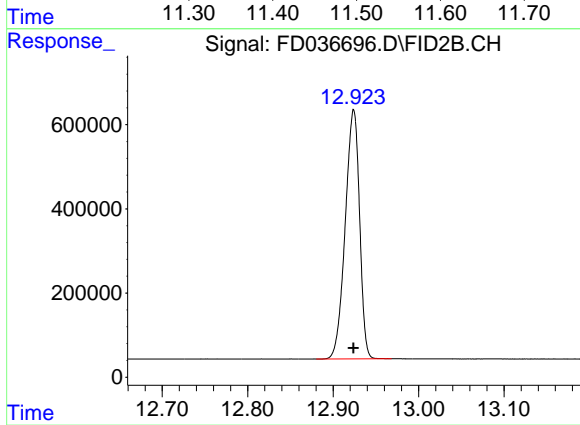




#9 ortho-Terphenyl (SURR)

R.T.: 11.493 min
Delta R.T.: 0.001 min
Response: 9140041
Conc: 61.69 ug/ml

Instrument :
FID_D
ClientSampleId :
PB135504BL



#12 1-chlorooctadecane (SURR)

R.T.: 12.924 min
Delta R.T.: 0.000 min
Response: 6894901
Conc: 59.25 ug/ml