

Data Path : Z:\pestpcbsrv\HPCHEM1\FID_D\Data\FD040320AL\
Data File : FD032790.D
Signal(s) : FID2B.CH
Acq On : 03 Apr 2020 8:19
Operator : DD\AJ
Sample : MECL2
Misc :
ALS Vial : 51 Sample Multiplier: 1

Instrument :
FID_D
ClientSampleId :

Integration File: autoint1.e
Quant Time: Apr 04 02:23:09 2020
Quant Method : Z:\pestpcbsrv\HPCHEM1\FID_D\methods\Alaphatic EPH 030420.M
Quant Title : GC Extractables
QLast Update : Thu Mar 05 10:06:03 2020
Response via : Initial Calibration
Integrator: ChemStation 6890 Scale Mode: Large solvent peaks clipped

Volume Inj. : 1 ul
Signal Phase : Rxi-1ms
Signal Info : 20M x 0.18mm x 0.18um

Compound	R.T.	Response	Conc Units

System Monitoring Compounds			
Target Compounds			

(f)=RT Delta > 1/2 Window

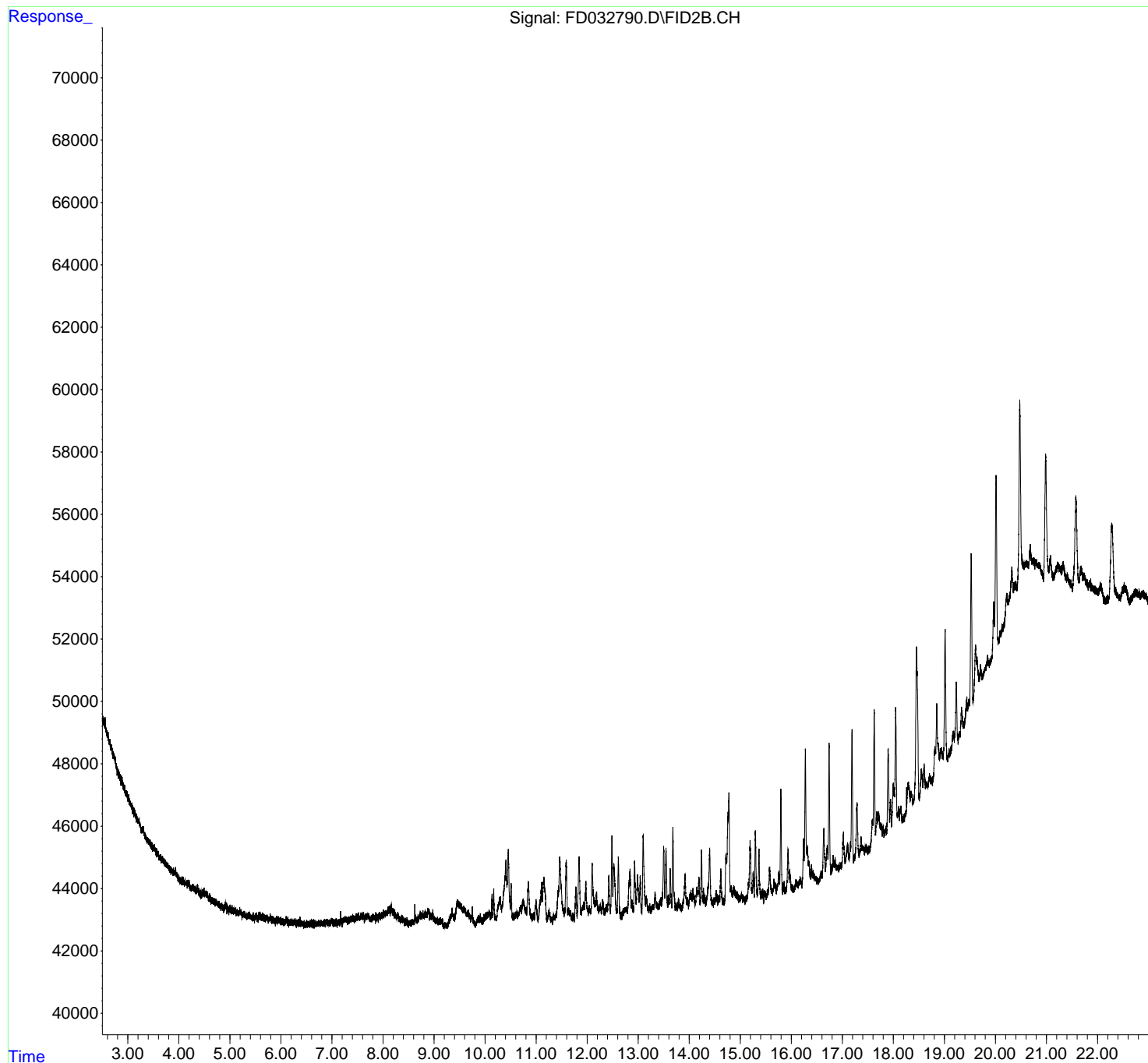
(m)=manual int.

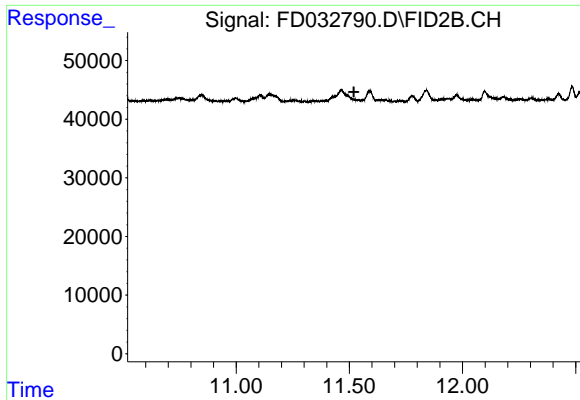
Data Path : Z:\pestpcbsrv\HPCHEM1\FID_D\Data\FD040320AL\
Data File : FD032790.D
Signal(s) : FID2B.CH
Acq On : 03 Apr 2020 8:19
Operator : DD\AJ
Sample : MECL2
Misc :
ALS Vial : 51 Sample Multiplier: 1

Instrument :
FID_D
ClientSampled :

Integration File: autoint1.e
Quant Time: Apr 04 02:23:09 2020
Quant Method : Z:\pestpcbsrv\HPCHEM1\FID_D\methods\Alaphatic EPH 030420.M
Quant Title : GC Extractables
QLast Update : Thu Mar 05 10:06:03 2020
Response via : Initial Calibration
Integrator: ChemStation 6890 Scale Mode: Large solvent peaks clipped

Volume Inj. : 1 ul
Signal Phase : Rxi-1ms
Signal Info : 20M x 0.18mm x 0.18um

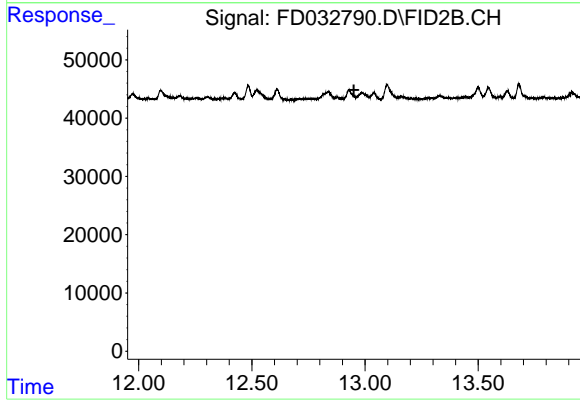




#9 ortho-Terphenyl (SURR)

R.T.: 0.000 min
Exp R.T. : 11.520 min
Response: 0
Conc: N.D.

Instrument :
FID_D
ClientSampleId :



#12 1-chlorooctadecane (SURR)

R.T.: 0.000 min
Exp R.T. : 12.951 min
Response: 0
Conc: N.D.