

Data Path : Z:\pestpcbsrv\HPCHEM1\FID_D\Data\FD040722AR\
 Data File : FD041879.D
 Signal(s) : FID2B.CH
 Acq On : 07 Apr 2022 15:03
 Operator : UA/NP
 Sample : PB143935BSD
 Misc :
 ALS Vial : 56 Sample Multiplier: 1

Integration File: sample.E
 Quant Time: Apr 08 02:58:01 2022
 Quant Method : Z:\pestpcbsrv\HPCHEM1\FID_D\methods\Aromatic EPH 032222.M
 Quant Title : GC Extractables
 QLast Update : Tue Mar 29 12:14:13 2022
 Response via : Initial Calibration
 Integrator: ChemStation 6890 Scale Mode: Large solvent peaks clipped

Volume Inj. : 1 µl
 Signal Phase : Rxi-1ms
 Signal Info : 20M x 0.18mm x 0.18µm

Compound	R.T.	Response	Conc Units

System Monitoring Compounds			
4) S 2-Bromonaphthalene (S...	7.343	6033209	37.616 ug/ml
Spiked Amount 50.000		Recovery =	75.23%
6) S 2-Fluorobiphenyl (SURR)	8.192	3683604	37.277 ug/ml
Spiked Amount 50.000 Range 0 - 131		Recovery =	74.55%
11) S ortho-Terphenyl (SURR)	11.223	6149141	31.632 ug/ml
Spiked Amount 50.000		Recovery =	63.26%
Target Compounds			
1) T 1,2,3-Trimethylbenzen...	4.164	4796130	27.382 ug/ml
2) T Naphthalene (C11.7)	5.685	5393431	30.569 ug/ml
3) T 2-Methylnaphthalene (...)	6.731	5355675	33.475 ug/ml
5) T Acenaphthylene (C15.06)	7.994	5500161	29.722 ug/ml
7) T Acenaphthene (C15.5)	8.288	6179628	32.190 ug/ml
8) T Flouorene (C16.55)	9.066	5968049	33.828 ug/ml
9) T Phenanthrene (C19.36)	10.453	6045660	34.660 ug/ml
10) T Anthracene (C19.43)	10.529	6202811	34.079 ug/ml
12) T Fluoranthene (C21.85)	12.256	6053221	34.288 ug/ml
13) T Pyrene (C20.8)	12.549	5816068	34.401 ug/ml
14) T Benzo[a]anthracene (C...	14.421	5316149	35.553 ug/ml
15) T Chrysene (C27.41)	14.462	5352905	29.739 ug/ml
16) T benzo[b]fluoranthene ...	15.970	5411696	36.494 ug/ml
17) T Bnezo[k]fluoranthene ...	16.002	5801491	35.110 ug/ml
18) T Benzo[a]pyrene (C31.34)	16.344	4935088	35.086 ug/mlm
19) T Indeno[1,2,3-cd]pyren...	17.714	5048075	45.833 ug/ml
20) T Dibenz[a,h]anthracene...	17.751	5623715	38.845 ug/ml
21) T Benzo[g,h,i]perylene ...	17.964	5439573	40.986 ug/ml

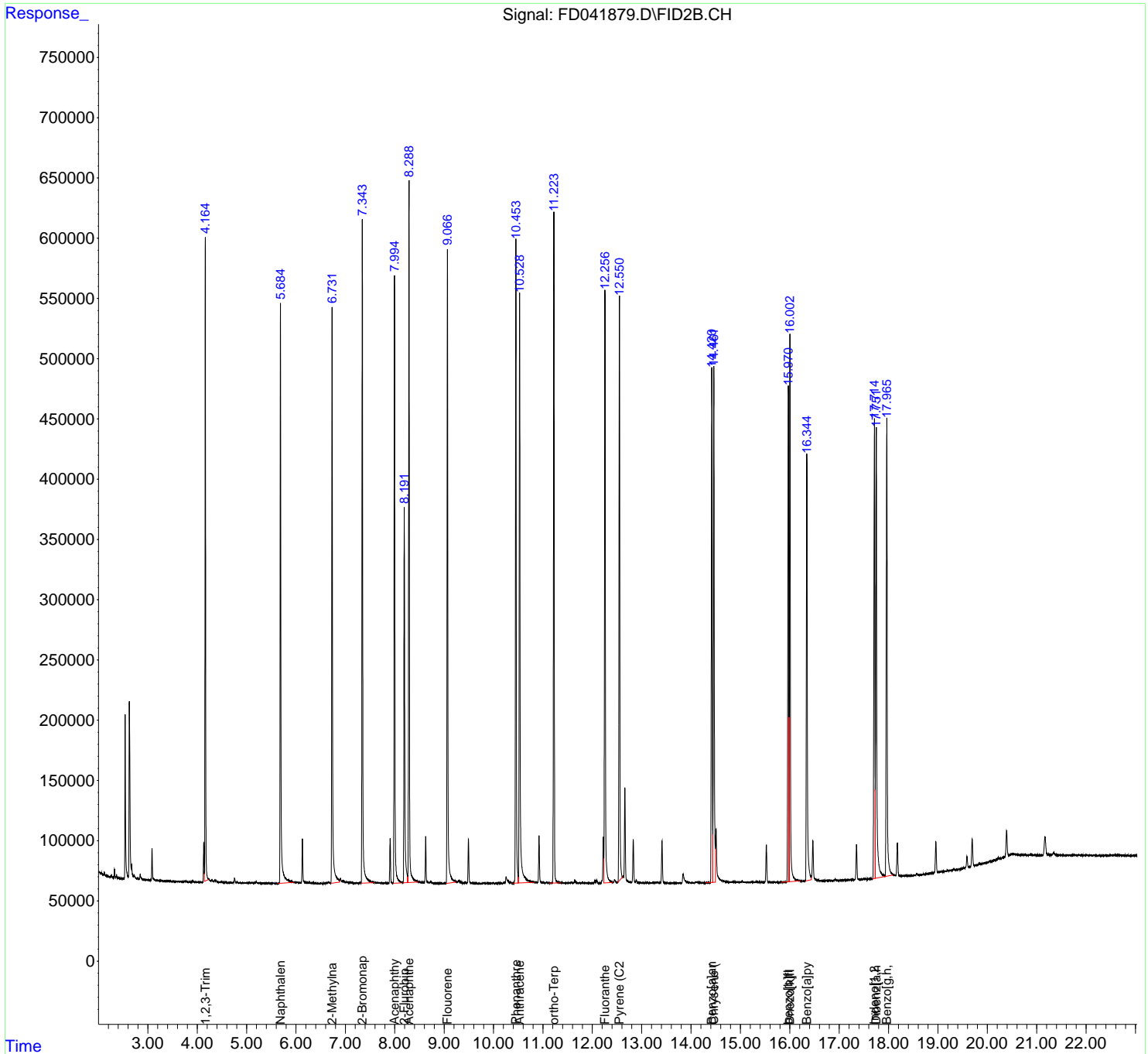
(f)=RT Delta > 1/2 Window

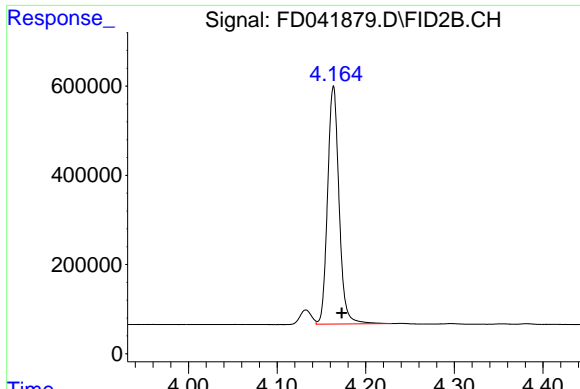
(m)=manual int.

Data Path : Z:\pestpcbsrv\HPCHEM1\FID_D\Data\FD040722AR\
 Data File : FD041879.D
 Signal(s) : FID2B.CH
 Acq On : 07 Apr 2022 15:03
 Operator : UA/NP
 Sample : PB143935BSD
 Misc :
 ALS Vial : 56 Sample Multiplier: 1

Integration File: sample.E
 Quant Time: Apr 08 02:58:01 2022
 Quant Method : Z:\pestpcbsrv\HPCHEM1\FID_D\methods\Aromatic EPH 032222.M
 Quant Title : GC Extractables
 QLast Update : Tue Mar 29 12:14:13 2022
 Response via : Initial Calibration
 Integrator: ChemStation 6890 Scale Mode: Large solvent peaks clipped

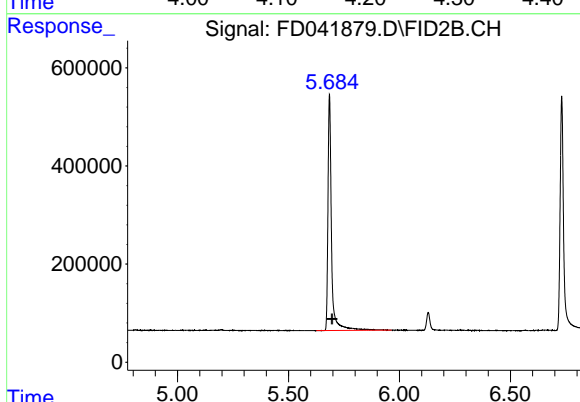
Volume Inj. : 1 µl
 Signal Phase : Rxi-1ms
 Signal Info : 20M x 0.18mm x 0.18µm





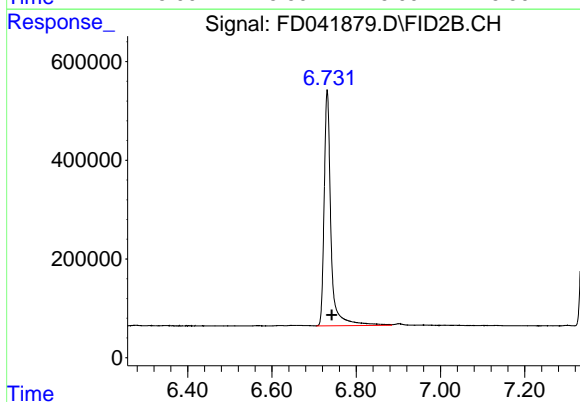
#1 1,2,3-Trimethylbenzene (C10.1)

R.T.: 4.164 min
Delta R.T.: -0.009 min
Response: 4796130
Conc: 27.38 ug/ml



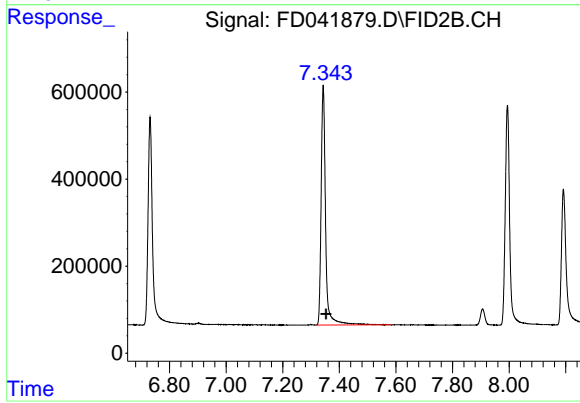
#2 Naphthalene (C11.7)

R.T.: 5.685 min
Delta R.T.: -0.011 min
Response: 5393431
Conc: 30.57 ug/ml



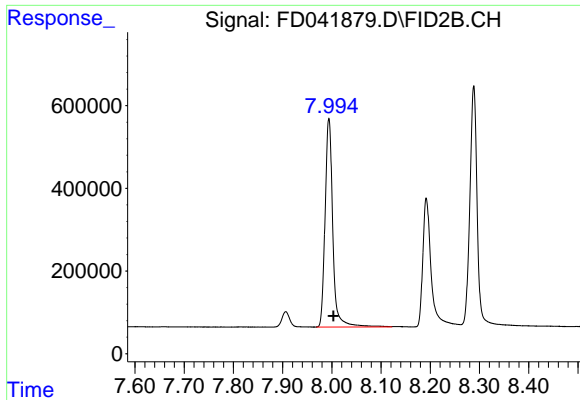
#3 2-Methylnaphthalene (C12.89)

R.T.: 6.731 min
Delta R.T.: -0.010 min
Response: 5355675
Conc: 33.47 ug/ml



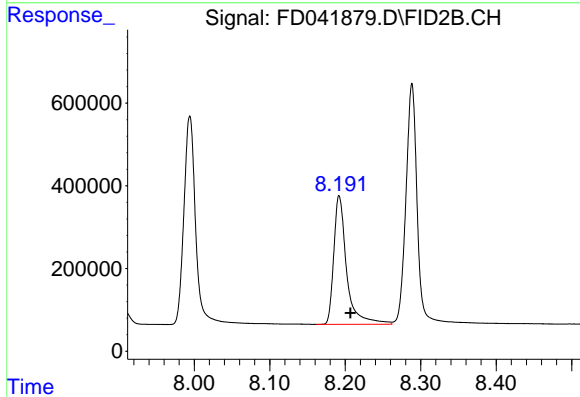
#4 2-Bromonaphthalene (SURR)

R.T.: 7.343 min
Delta R.T.: -0.010 min
Response: 6033209
Conc: 37.62 ug/ml



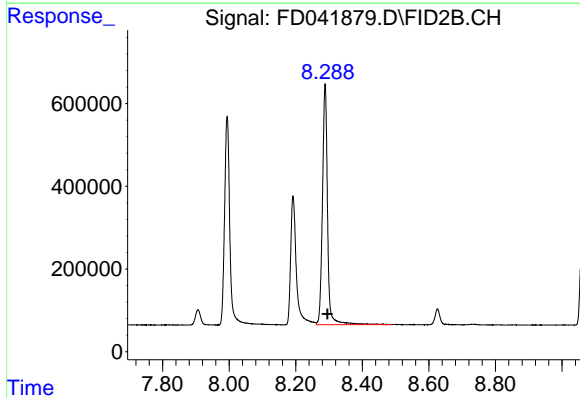
#5 Acenaphthylene (C15.06)

R.T.: 7.994 min
Delta R.T.: -0.009 min
Response: 5500161
Conc: 29.72 ug/ml



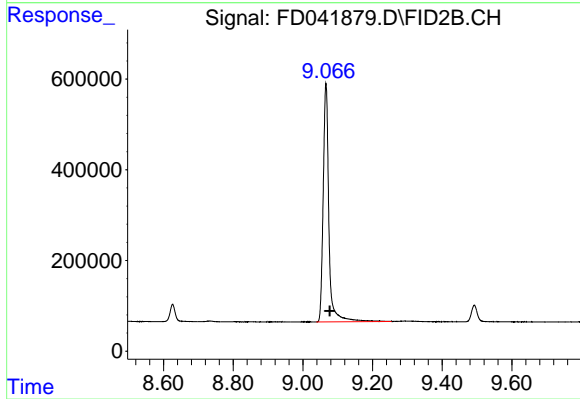
#6 2-Fluorobiphenyl (SURR)

R.T.: 8.192 min
Delta R.T.: -0.015 min
Response: 3683604
Conc: 37.28 ug/ml



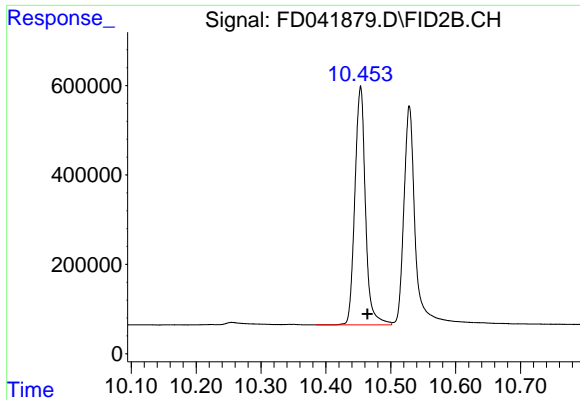
#7 Acenaphthene (C15.5)

R.T.: 8.288 min
Delta R.T.: -0.007 min
Response: 6179628
Conc: 32.19 ug/ml

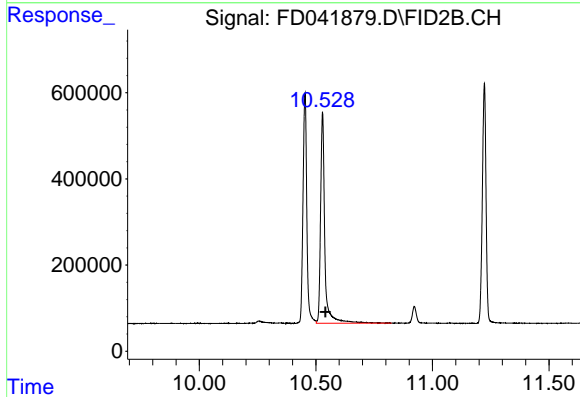


#8 Fluorene (C16.55)

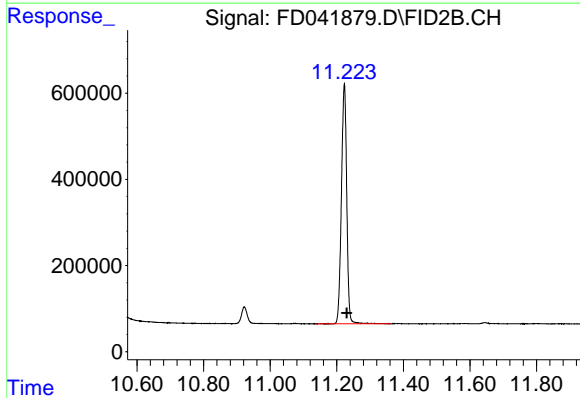
R.T.: 9.066 min
Delta R.T.: -0.011 min
Response: 5968049
Conc: 33.83 ug/ml



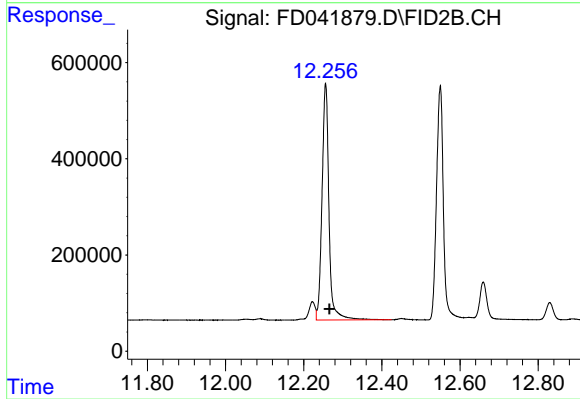
#9 Phenanthrene (C19.36)
R.T.: 10.453 min
Delta R.T.: -0.011 min
Response: 6045660
Conc: 34.66 ug/ml



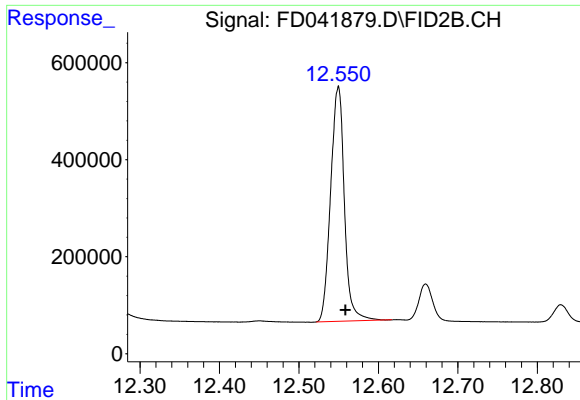
#10 Anthracene (C19.43)
R.T.: 10.529 min
Delta R.T.: -0.012 min
Response: 6202811
Conc: 34.08 ug/ml



#11 ortho-Terphenyl (SURR)
R.T.: 11.223 min
Delta R.T.: -0.007 min
Response: 6149141
Conc: 31.63 ug/ml

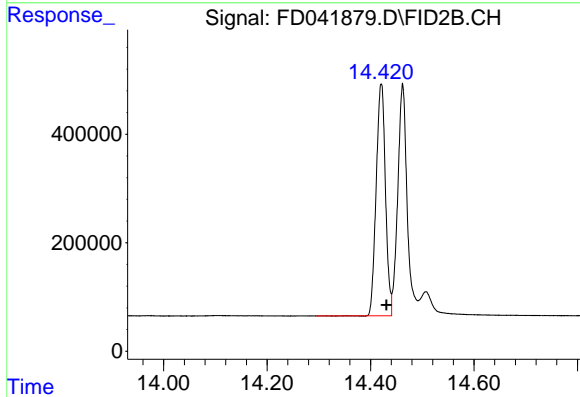


#12 Fluoranthene (C21.85)
R.T.: 12.256 min
Delta R.T.: -0.010 min
Response: 6053221
Conc: 34.29 ug/ml



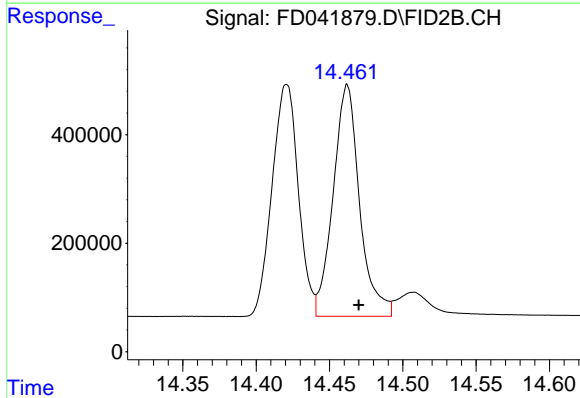
#13 Pyrene (C20.8)

R.T.: 12.549 min
Delta R.T.: -0.009 min
Response: 5816068
Conc: 34.40 ug/ml



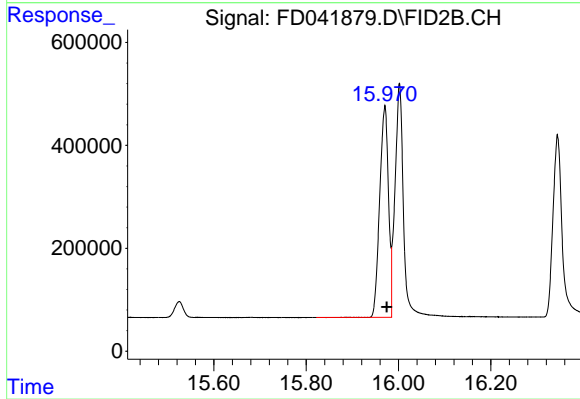
#14 Benzo[a]anthracene (C26.37)

R.T.: 14.421 min
Delta R.T.: -0.010 min
Response: 5316149
Conc: 35.55 ug/ml



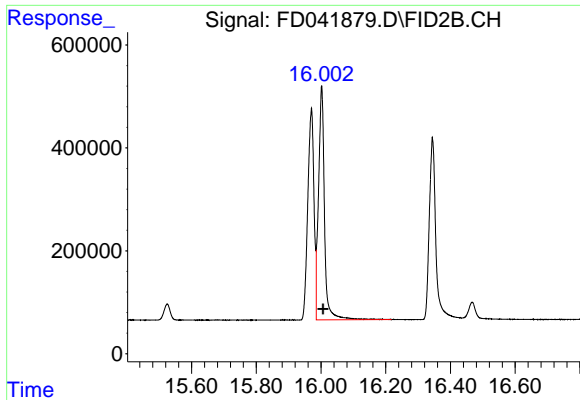
#15 Chrysene (C27.41)

R.T.: 14.462 min
Delta R.T.: -0.008 min
Response: 5352905
Conc: 29.74 ug/ml



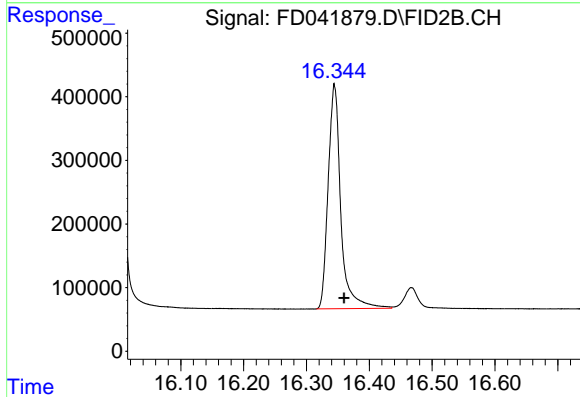
#16 benzo[b]fluoranthene (C30.41)

R.T.: 15.970 min
Delta R.T.: -0.004 min
Response: 5411696
Conc: 36.49 ug/ml



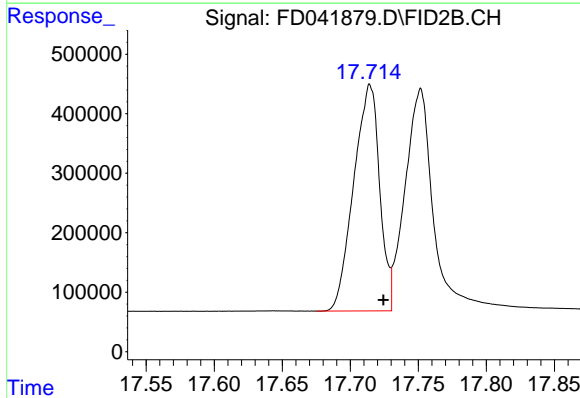
#17 Bnezo[k]fluoranthene (C30.14)

R.T.: 16.002 min
 Delta R.T.: -0.004 min
 Response: 5801491
 Conc: 35.11 ug/ml



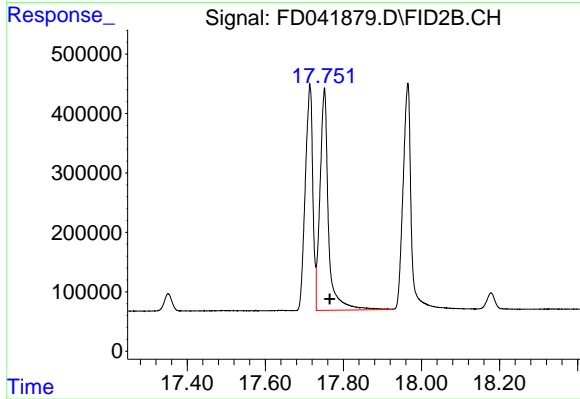
#18 Benzo[a]pyrene (C31.34)

R.T.: 16.344 min
 Delta R.T.: -0.016 min
 Response: 4935088
 Conc: 35.09 ug/ml m



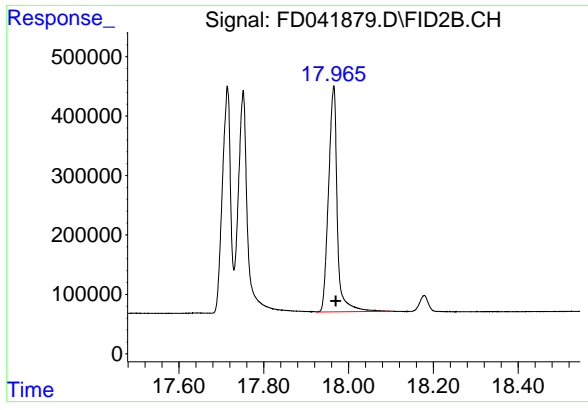
#19 Indeno[1,2,3-cd]pyrene (C35.01)

R.T.: 17.714 min
 Delta R.T.: -0.010 min
 Response: 5048075
 Conc: 45.83 ug/ml



#20 Dibenz[a,h]anthracene (C30.36)

R.T.: 17.751 min
 Delta R.T.: -0.014 min
 Response: 5623715
 Conc: 38.84 ug/ml



#21 Benzo[g,h,i]perylene (C34.01)

R.T.: 17.964 min
Delta R.T.: -0.005 min
Response: 5439573
Conc: 40.99 ug/ml