

Data Path : Z:\pestpcbsrv\HPCHEM1\FID_D\Data\FD040723AL\
 Data File : FD045448.D
 Signal(s) : FID2B.ch
 Acq On : 08 Apr 2023 06:07
 Operator : YP/AJ
 Sample : PB151929BL
 Misc :
 ALS Vial : 60 Sample Multiplier: 1

Instrument :
 FID_D
 ClientSampleId :

Integration File: autoint1.e
 Quant Time: Apr 10 04:16:58 2023
 Quant Method : Z:\pestpcbsrv\HPCHEM1\FID_D\methods\Aliphatic EPH 040523.M
 Quant Title : GC Extractables
 QLast Update : Wed Apr 05 05:57:21 2023
 Response via : Initial Calibration
 Integrator: ChemStation

Volume Inj. : 1 ul
 Signal Phase : Rxi-1ms
 Signal Info : 20M x 0.18mm x 0.18um

Compound	R.T.	Response	Conc Units

System Monitoring Compounds			
9) S ortho-Terphenyl (SURR)	11.438	453701	2.706 ug/ml
Spiked Amount	50.000	Recovery	= 5.41%
12) S 1-chlorooctadecane (S...	12.876	5241231	43.883 ug/ml
Spiked Amount	50.000	Recovery	= 87.77%
Target Compounds			
4) T n-Dodecane (C12)	6.323	40867	0.268 ug/ml
8) T n-Octadecane (C18)	11.134	66643	0.426 ug/ml
17) T n-Tricontane (C30)	17.555	94443	0.725 ug/ml
18) T n-Dotriacontane (C32)	18.380	96291	0.740 ug/ml
19) T n-Tetraatriacontane (C34)	19.158	75602	0.605 ug/ml
20) T n-Hexatriacontane (C36)	19.894	67304	0.587 ug/ml
21) T n-Octatriacontane (C38)	20.596	66936	0.610 ug/ml
22) T n-Tetracontane (C40)	21.429	78156	0.729 ug/ml

(f)=RT Delta > 1/2 Window

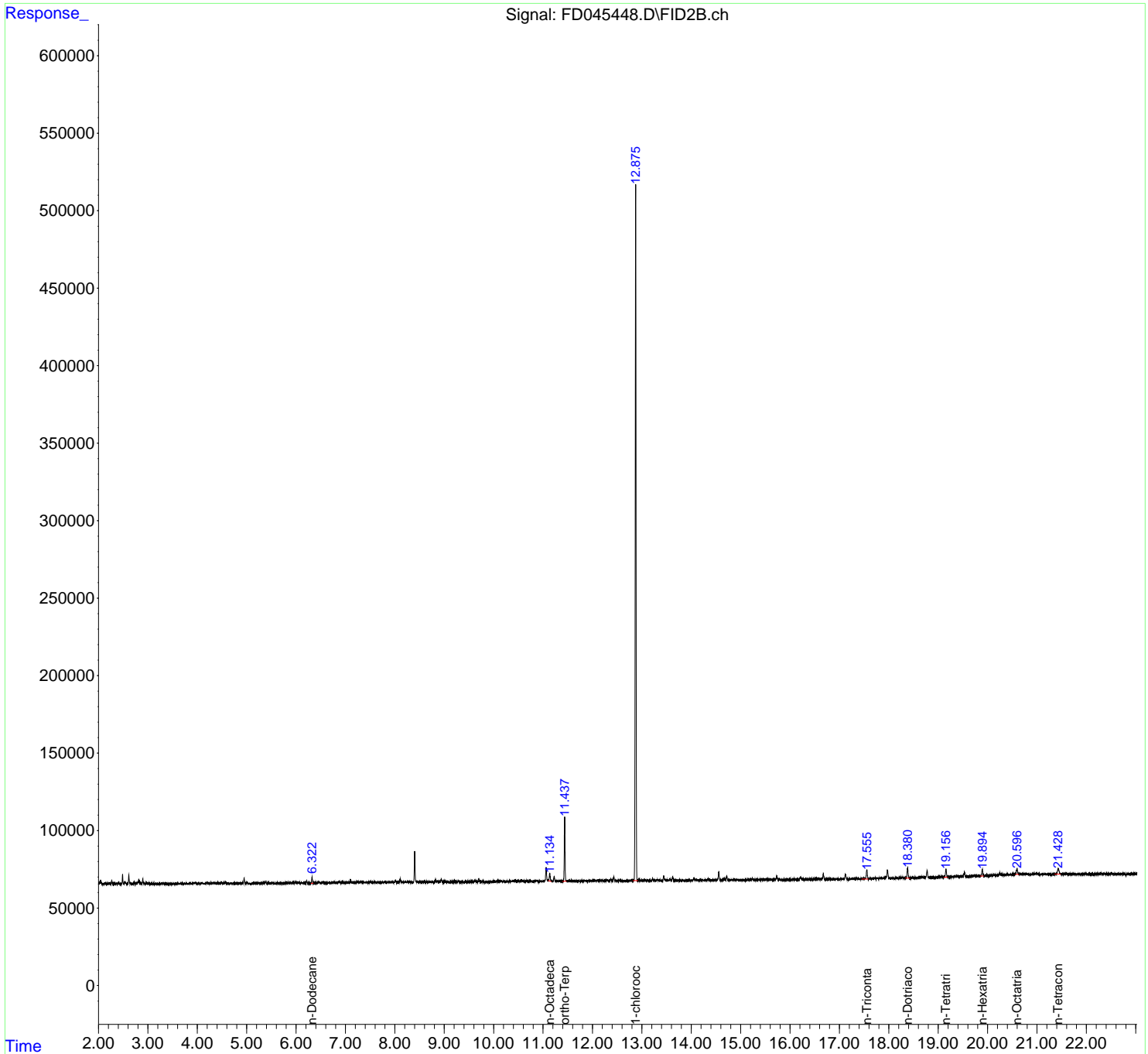
(m)=manual int.

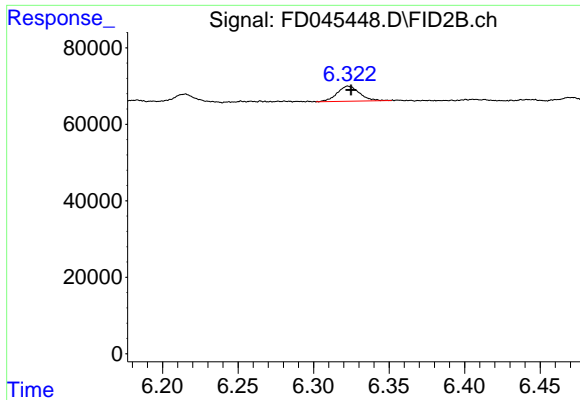
Data Path : Z:\pestpcbsrv\HPCHEM1\FID_D\Data\FD040723AL\
Data File : FD045448.D
Signal(s) : FID2B.ch
Acq On : 08 Apr 2023 06:07
Operator : YP/AJ
Sample : PB151929BL
Misc :
ALS Vial : 60 Sample Multiplier: 1

Instrument :
FID_D
ClientSampleId :

Integration File: autoint1.e
Quant Time: Apr 10 04:16:58 2023
Quant Method : Z:\pestpcbsrv\HPCHEM1\FID_D\methods\Aliphatic EPH 040523.M
Quant Title : GC Extractables
QLast Update : Wed Apr 05 05:57:21 2023
Response via : Initial Calibration
Integrator: ChemStation

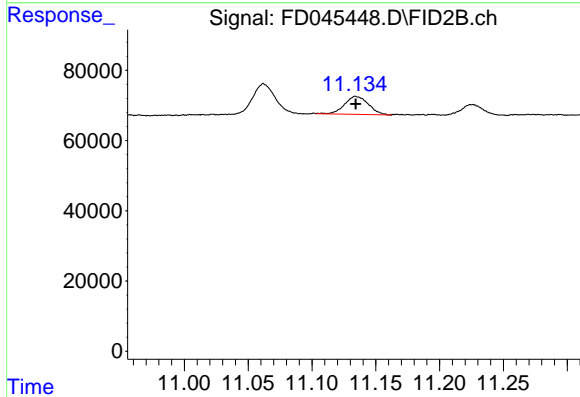
Volume Inj. : 1 ul
Signal Phase : Rxi-1ms
Signal Info : 20M x 0.18mm x 0.18um



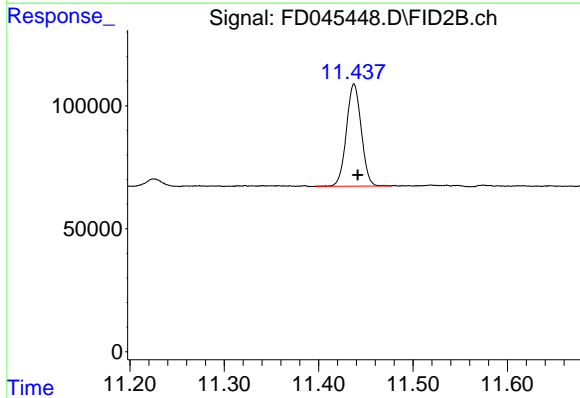


#4 n-Dodecane (C12)
 R.T.: 6.323 min
 Delta R.T.: -0.002 min
 Response: 40867
 Conc: 0.27 ug/ml

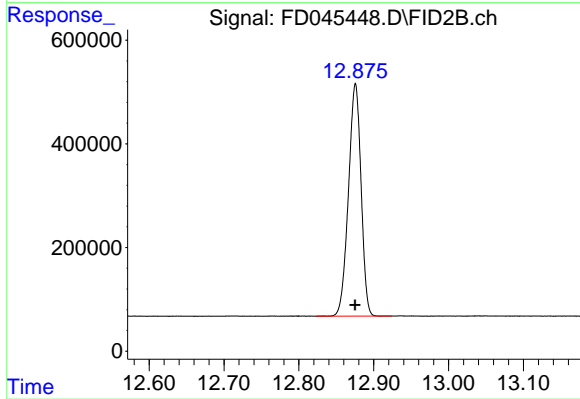
Instrument :
 FID_D
 ClientSampleId :



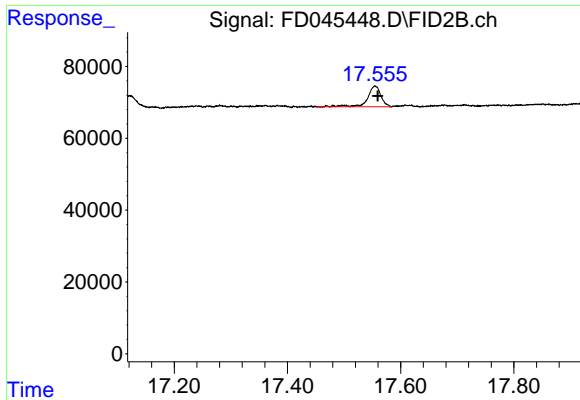
#8 n-Octadecane (C18)
 R.T.: 11.134 min
 Delta R.T.: 0.000 min
 Response: 66643
 Conc: 0.43 ug/ml



#9 ortho-Terphenyl (SURR)
 R.T.: 11.438 min
 Delta R.T.: -0.004 min
 Response: 453701
 Conc: 2.71 ug/ml



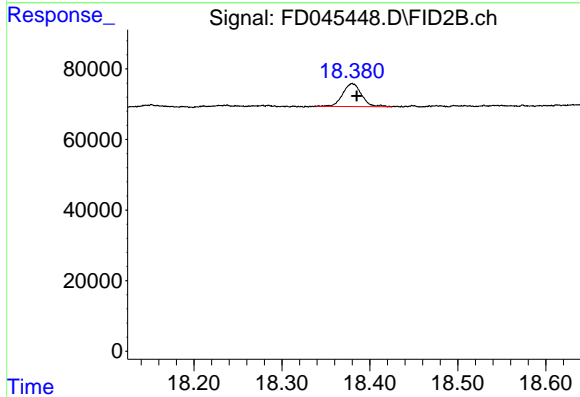
#12 1-chlorooctadecane (SURR)
 R.T.: 12.876 min
 Delta R.T.: 0.000 min
 Response: 5241231
 Conc: 43.88 ug/ml



#17 n-Tricontane (C30)

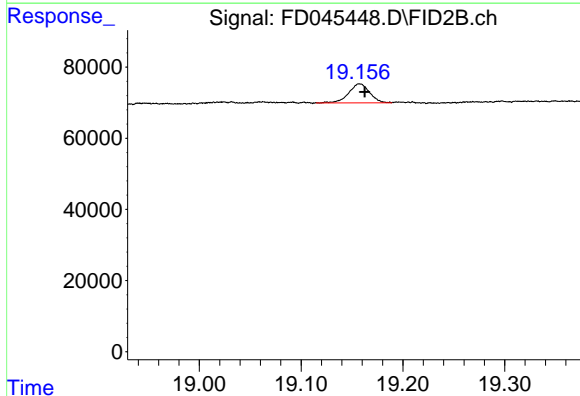
R.T.: 17.555 min
 Delta R.T.: -0.005 min
 Response: 94443
 Conc: 0.72 ug/ml

Instrument :
 FID_D
 ClientSampleId :



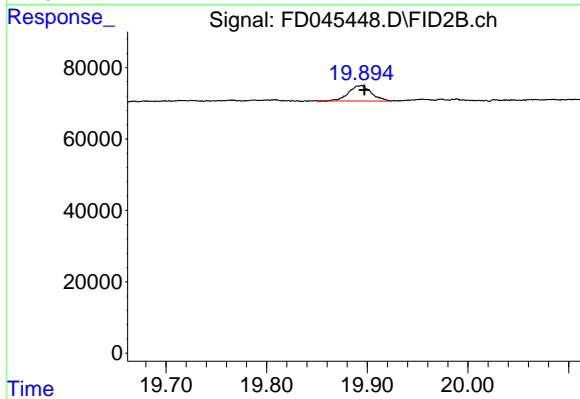
#18 n-Dotriacontane (C32)

R.T.: 18.380 min
 Delta R.T.: -0.005 min
 Response: 96291
 Conc: 0.74 ug/ml



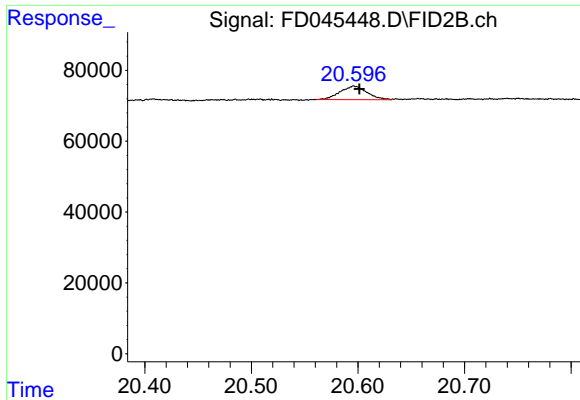
#19 n-Tetratriacontane (C34)

R.T.: 19.158 min
 Delta R.T.: -0.005 min
 Response: 75602
 Conc: 0.61 ug/ml



#20 n-Hexatriacontane (C36)

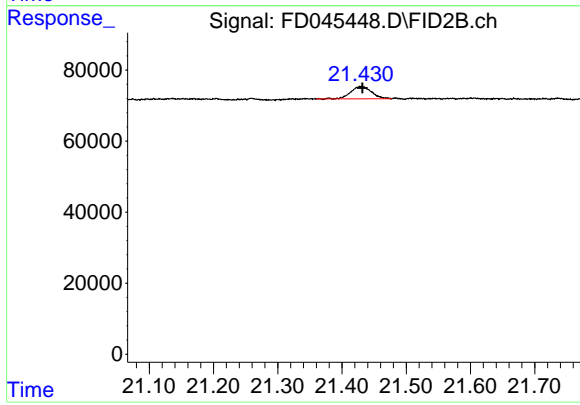
R.T.: 19.894 min
 Delta R.T.: -0.003 min
 Response: 67304
 Conc: 0.59 ug/ml



#21 n-Octatriacontane (C38)

R.T.: 20.596 min
Delta R.T.: -0.005 min
Response: 66936
Conc: 0.61 ug/ml

Instrument :
FID_D
ClientSampleId :



#22 n-Tetracontane (C40)

R.T.: 21.429 min
Delta R.T.: -0.003 min
Response: 78156
Conc: 0.73 ug/ml