

Data Path : Z:\pestpcbsrv\HPCHEM1\FID\_D\Data\FD041019AL\  
 Data File : FD028804.D  
 Signal(s) : FID2B.CH  
 Acq On : 11 Apr 2019 3:11  
 Operator : AJ\SJ  
 Sample : K2345-08  
 Misc :  
 ALS Vial : 77 Sample Multiplier: 1

Integration File: autoint1.e  
 Quant Time: Apr 11 04:52:27 2019  
 Quant Method : Z:\pestpcbsrv\HPCHEM1\FID\_D\methods\Alaphatic EPH 032519.M  
 Quant Title : GC Extractables  
 QLast Update : Tue Mar 26 04:15:45 2019  
 Response via : Initial Calibration  
 Integrator: ChemStation 6890 Scale Mode: Large solvent peaks clipped

Volume Inj. : 1 ul  
 Signal Phase : Rxi-1ms  
 Signal Info : 20M x 0.18mm x 0.18um

Compound	R.T.	Response	Conc Units
System Monitoring Compounds			
9) S ortho-Terphenyl (SURR)	11.021	3884190	26.985 ug/mlm
Spiked Amount	50.000	Recovery =	53.97%
12) S 1-chlorooctadecane (S...	12.444	3258366	27.916 ug/mlm
Spiked Amount	50.000	Recovery =	55.83%

Target Compounds

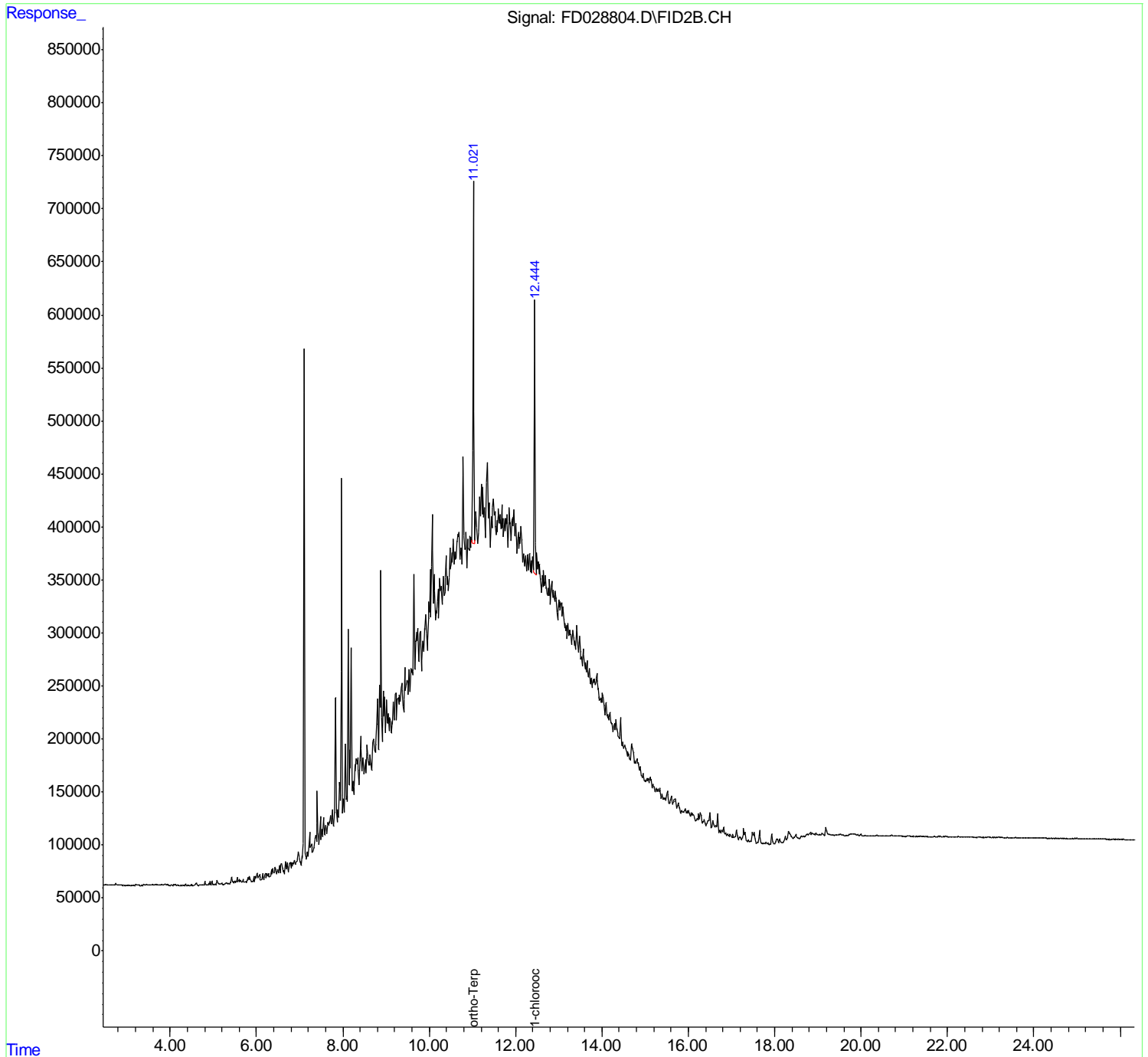
(f)=RT Delta > 1/2 Window

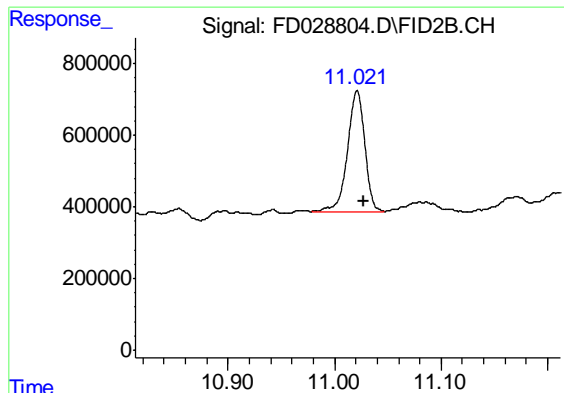
(m)=manual int.

Data Path : Z:\pestpcbsrv\HPCHEM1\FID\_D\Data\FD041019AL\  
 Data File : FD028804.D  
 Signal(s) : FID2B.CH  
 Acq On : 11 Apr 2019 3:11  
 Operator : AJ\SJ  
 Sample : K2345-08  
 Misc :  
 ALS Vial : 77 Sample Multiplier: 1

Integration File: autoint1.e  
 Quant Time: Apr 11 04:52:27 2019  
 Quant Method : Z:\pestpcbsrv\HPCHEM1\FID\_D\methods\Alaphatic EPH 032519.M  
 Quant Title : GC Extractables  
 QLast Update : Tue Mar 26 04:15:45 2019  
 Response via : Initial Calibration  
 Integrator: ChemStation 6890 Scale Mode: Large solvent peaks clipped

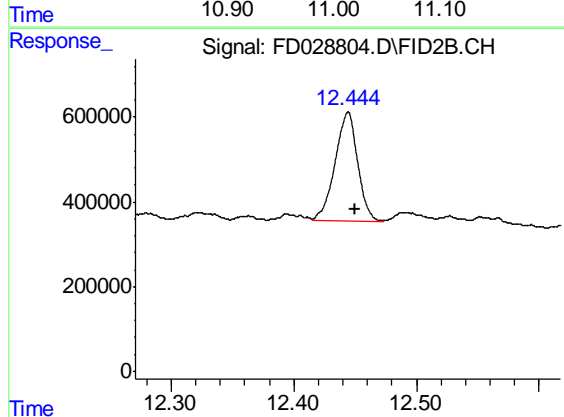
Volume Inj. : 1 ul  
 Signal Phase : Rxi-1ms  
 Signal Info : 20M x 0.18mm x 0.18um





#9 ortho-Terphenyl (SURR)

R.T.: 11.021 min  
Delta R.T.: -0.007 min  
Response: 3884190  
Conc: 26.99 ug/ml m



#12 1-chlorooctadecane (SURR)

R.T.: 12.444 min  
Delta R.T.: -0.005 min  
Response: 3258366  
Conc: 27.92 ug/ml m