

Data Path : Z:\pestpcbsrv\HPCHEM1\FID_D\Data\FD041321AR\
 Data File : FD036867.D
 Signal(s) : FID2B.CH
 Acq On : 13 Apr 2021 13:08
 Operator : DD\AJ
 Sample : M1998-01
 Misc :
 ALS Vial : 56 Sample Multiplier: 1

Instrument :
 FID_D
 ClientSampleId :
 SB-3A

Integration File: autoint1.e
 Quant Time: Apr 14 02:47:14 2021
 Quant Method : Z:\pestpcbsrv\HPCHEM1\FID_D\methods\Aromatic EPH 032321.M
 Quant Title : GC Extractables
 QLast Update : Wed Mar 24 11:18:39 2021
 Response via : Initial Calibration
 Integrator: ChemStation 6890 Scale Mode: Large solvent peaks clipped

Volume Inj. : 1 µl
 Signal Phase : Rxi-1ms
 Signal Info : 20M x 0.18mm x 0.18µm

Compound	R.T.	Response	Conc Units

System Monitoring Compounds			
4) S 2-Bromonaphthalene (S...	7.588	4935274	35.091 ug/ml
Spiked Amount 50.000		Recovery =	70.18%
6) S 2-Fluorobiphenyl (SURR)	8.449	3008928	32.055 ug/ml
Spiked Amount 50.000 Range 0 - 131		Recovery =	64.11%
11) S ortho-Terphenyl (SURR)	11.489	3544114	23.205 ug/ml
Spiked Amount 50.000		Recovery =	46.41%

Target Compounds

(f)=RT Delta > 1/2 Window

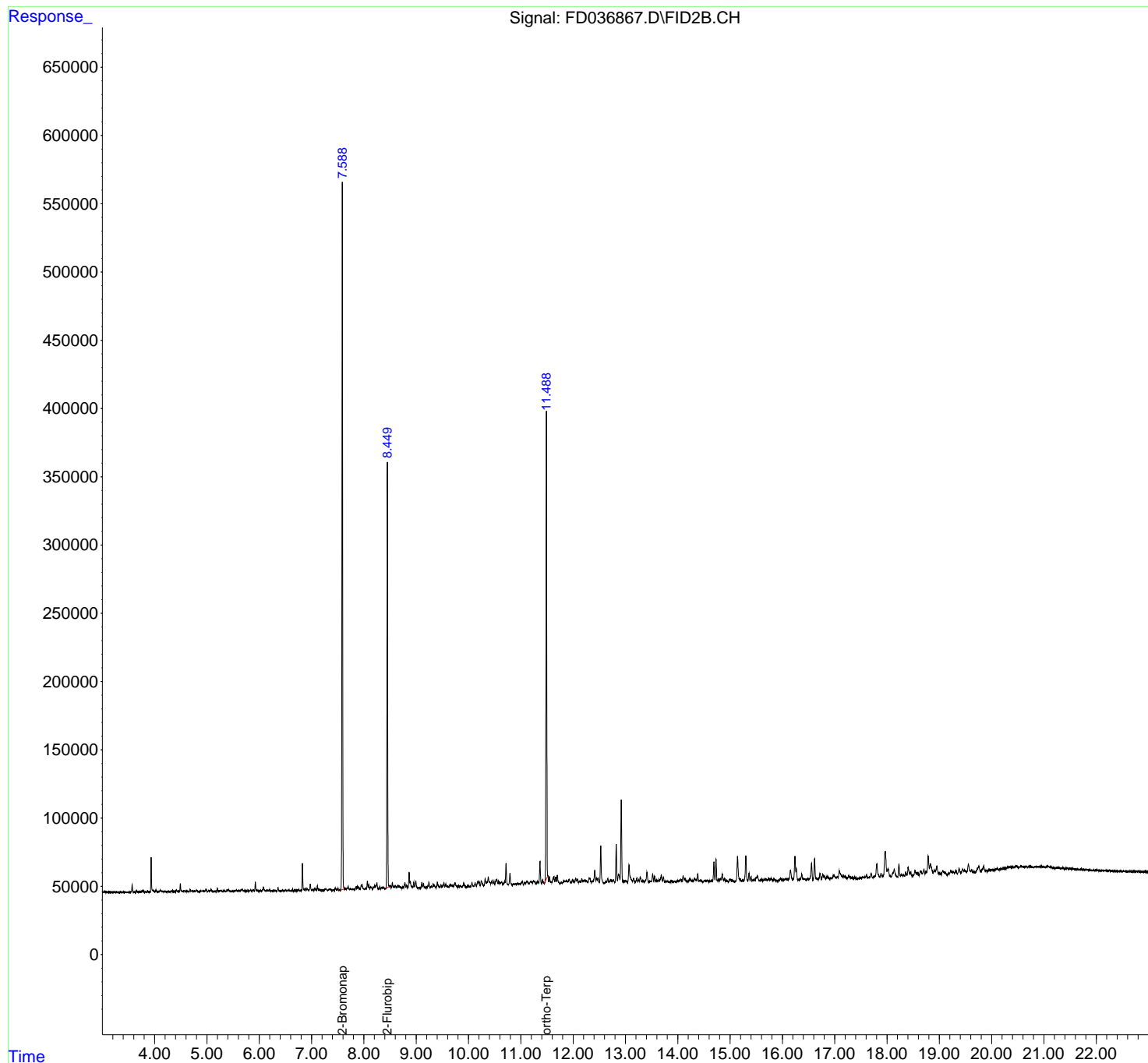
(m)=manual int.

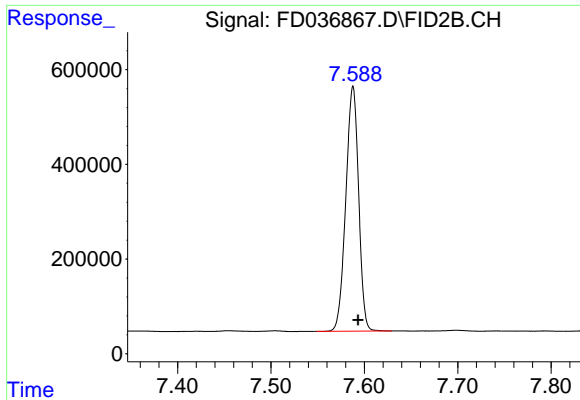
Data Path : Z:\pestpcbsrv\HPCHEM1\FID_D\Data\FD041321AR\
Data File : FD036867.D
Signal(s) : FID2B.CH
Acq On : 13 Apr 2021 13:08
Operator : DD\AJ
Sample : M1998-01
Misc :
ALS Vial : 56 Sample Multiplier: 1

Instrument :
FID_D
ClientSampled :
SB-3A

Integration File: autoint1.e
Quant Time: Apr 14 02:47:14 2021
Quant Method : Z:\pestpcbsrv\HPCHEM1\FID_D\methods\Aromatic EPH 032321.M
Quant Title : GC Extractables
QLast Update : Wed Mar 24 11:18:39 2021
Response via : Initial Calibration
Integrator: ChemStation 6890 Scale Mode: Large solvent peaks clipped

Volume Inj. : 1 µl
Signal Phase : Rxi-1ms
Signal Info : 20M x 0.18mm x 0.18µm

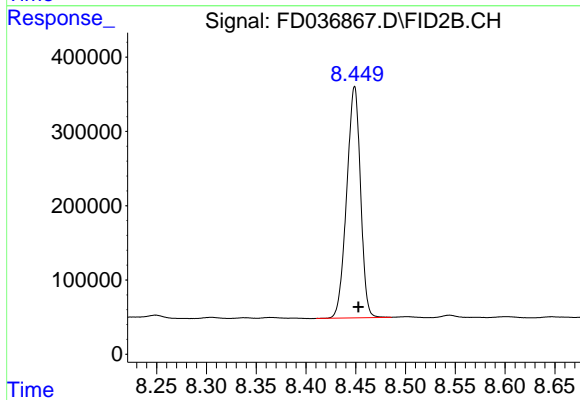




#4 2-Bromonaphthalene (SURR)

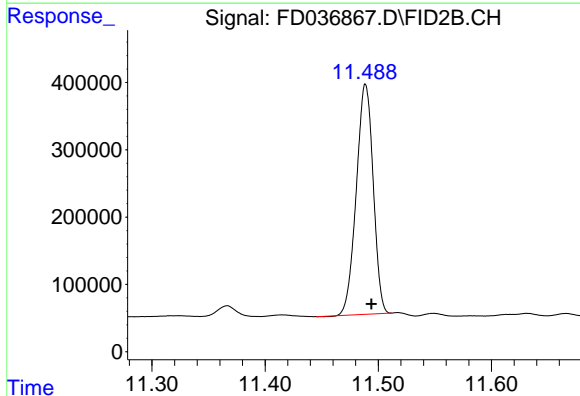
R.T.: 7.588 min
Delta R.T.: -0.005 min
Response: 4935274
Conc: 35.09 ug/ml

Instrument :
FID_D
ClientSampled :
SB-3A



#6 2-Fluorobiphenyl (SURR)

R.T.: 8.449 min
Delta R.T.: -0.004 min
Response: 3008928
Conc: 32.05 ug/ml



#11 ortho-Terphenyl (SURR)

R.T.: 11.489 min
Delta R.T.: -0.005 min
Response: 3544114
Conc: 23.21 ug/ml