

Data Path : Z:\pestpcbsrv\HPCHEM1\FID\_D\Data\FD041420AL\  
 Data File : FD032922.D  
 Signal(s) : FID2B.CH  
 Acq On : 15 Apr 2020 6:19  
 Operator : DD\AJ  
 Sample : 20 PPM ALIPHATIC HC STD  
 Misc :  
 ALS Vial : 52 Sample Multiplier: 1

**Instrument :**  
 FID\_D  
**ClientSampleId :**  
 20 PPM ALIPHATIC HC STD

**Manual Integrations**  
**APPROVED**  
 Sohil  
 4/15/2020 11:40:31 AM

Integration File: sample.E  
 Quant Time: Apr 15 06:50:15 2020  
 Quant Method : Z:\pestpcbsrv\HPCHEM1\FID\_D\methods\Alaphatic EPH 040720.M  
 Quant Title : GC Extractables  
 QLast Update : Tue Apr 07 14:10:50 2020  
 Response via : Initial Calibration  
 Integrator: ChemStation 6890 Scale Mode: Large solvent peaks clipped

Volume Inj. : 1 ul  
 Signal Phase : Rxi-1ms  
 Signal Info : 20M x 0.18mm x 0.18um

| Compound                       | R.T.   | Response | Conc Units   |
|--------------------------------|--------|----------|--------------|
| -----                          |        |          |              |
| System Monitoring Compounds    |        |          |              |
| 9) S ortho-Terphenyl (SURR)    | 11.506 | 2833055  | 18.855 ug/ml |
| Spiked Amount                  | 50.000 | Recovery | = 37.71%     |
| 12) S 1-chlorooctadecane (S... | 12.937 | 2194450  | 18.697 ug/ml |
| Spiked Amount                  | 50.000 | Recovery | = 37.39%     |
| Target Compounds               |        |          |              |
| 1) T n-Nonane (C9)             | 3.313  | 2719148  | 20.336 ug/ml |
| 2) T n-Decane (C10)            | 4.373  | 2742765  | 20.472 ug/ml |
| 3) T A~Naphthalene (C11.7)     | 5.949  | 3017914  | 20.476 ug/ml |
| 4) T n-Dodecane (C12)          | 6.379  | 2780847  | 20.510 ug/ml |
| 5) T A~2-methylnaphthalene...  | 7.001  | 3029804  | 20.394 ug/ml |
| 6) T n-Tetradecane (C14)       | 8.165  | 2782671  | 20.353 ug/ml |
| 7) T n-Hexadecane (C16)        | 9.757  | 2759915  | 20.090 ug/ml |
| 8) T n-Octadecane (C18)        | 11.192 | 2720057  | 19.642 ug/ml |
| 10) T n-Eicosane (C20)         | 12.495 | 2649251  | 19.072 ug/ml |
| 11) T n-Heneicosane (C21)      | 13.104 | 2624541  | 18.736 ug/ml |
| 13) T n-Docosane (C22)         | 13.688 | 2555622  | 18.407 ug/ml |
| 14) T n-Tetracosane (C24)      | 14.786 | 2490092  | 18.147 ug/ml |
| 15) T n-Hexacosane (C26)       | 15.802 | 2389371  | 17.968 ug/ml |
| 16) T n-Octacosane (C28)       | 16.748 | 2277460  | 18.043 ug/ml |
| 17) T n-Tricontane (C30)       | 17.630 | 2111982  | 18.554 ug/ml |
| 18) T n-Dotriacontane (C32)    | 18.459 | 1642023  | 19.547 ug/ml |
| 19) T n-Tetratriacontane (C34) | 19.238 | 1189608  | 19.614 ug/ml |
| 20) T n-Hexatriacontane (C36)  | 19.974 | 1078569  | 21.497 ug/ml |
| 21) T n-Octatriacontane (C38)  | 20.688 | 1012717  | 21.035 ug/ml |
| 22) T n-Tetracontane (C40)     | 21.550 | 862114   | 17.085 ug/ml |
| -----                          |        |          |              |

(f)=RT Delta > 1/2 Window

(m)=manual int.

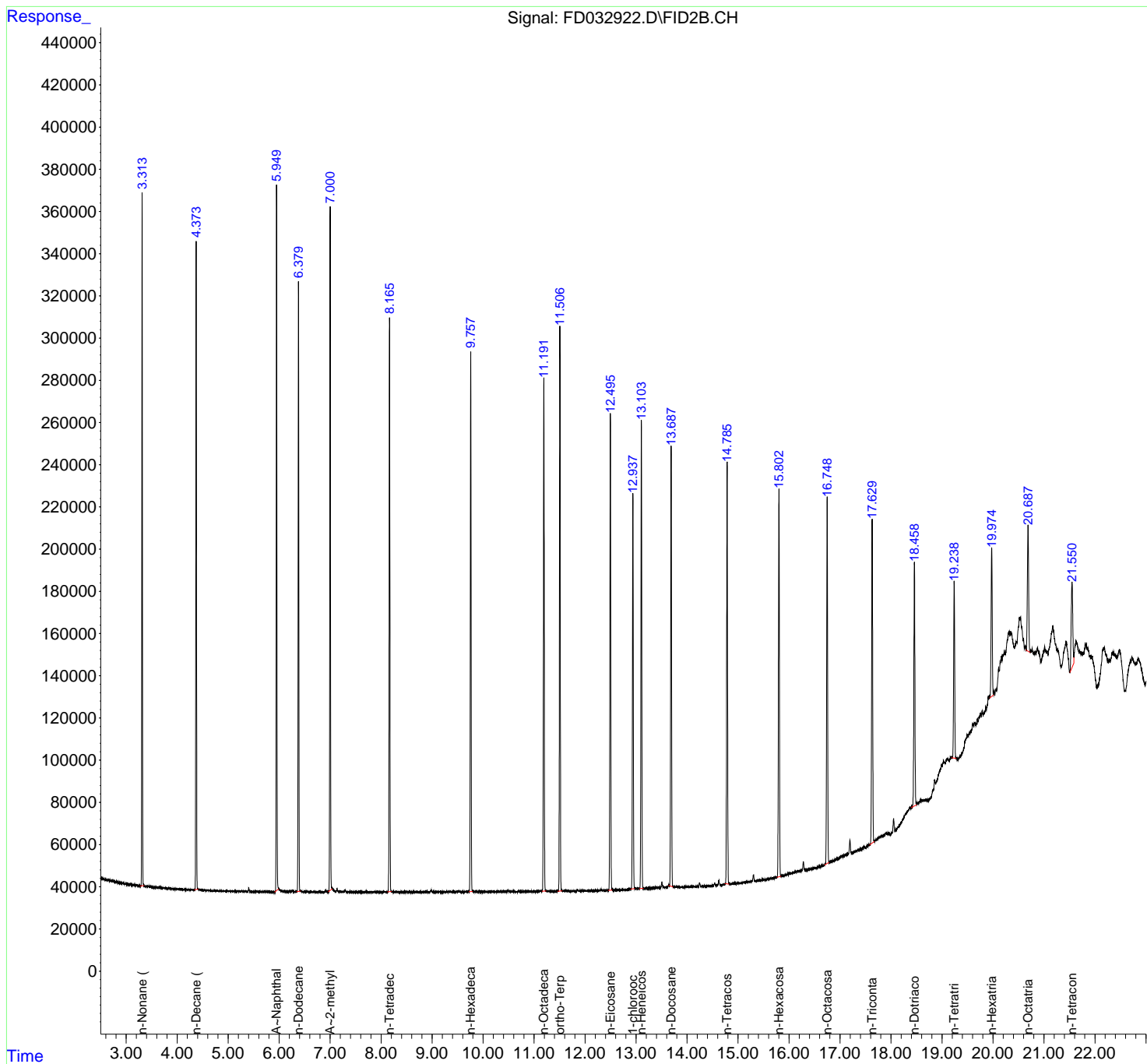
Data Path : Z:\pestpcbsrv\HPCHEM1\FID\_D\Data\FD041420AL\  
 Data File : FD032922.D  
 Signal(s) : FID2B.CH  
 Acq On : 15 Apr 2020 6:19  
 Operator : DD\AJ  
 Sample : 20 PPM ALIPHATIC HC STD  
 Misc :  
 ALS Vial : 52 Sample Multiplier: 1

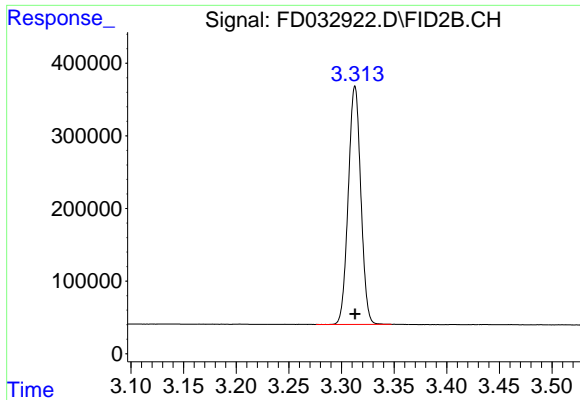
**Instrument :**  
 FID\_D  
**Client Sampled :**  
 20 PPM ALIPHATIC HC STD

**Manual Integrations**  
**APPROVED**  
 Sohil  
 4/15/2020 11:40:31 AM

Integration File: sample.E  
 Quant Time: Apr 15 06:50:15 2020  
 Quant Method : Z:\pestpcbsrv\HPCHEM1\FID\_D\methods\Aliphatic EPH 040720.M  
 Quant Title : GC Extractables  
 QLast Update : Tue Apr 07 14:10:50 2020  
 Response via : Initial Calibration  
 Integrator: ChemStation 6890 Scale Mode: Large solvent peaks clipped

Volume Inj. : 1 ul  
 Signal Phase : Rxi-1ms  
 Signal Info : 20M x 0.18mm x 0.18um

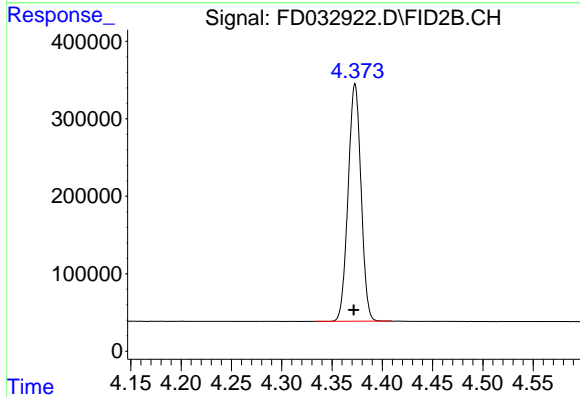




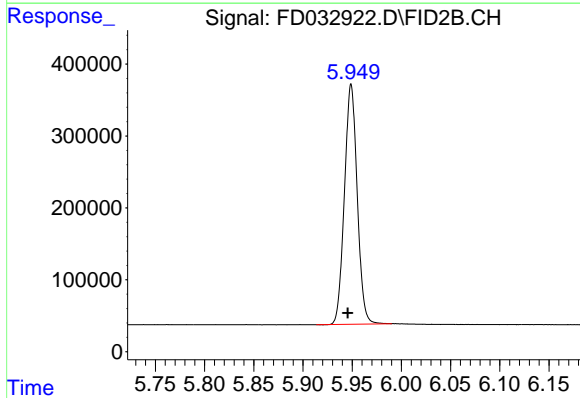
#1 n-Nonane (C9)  
 R.T.: 3.313 min  
 Delta R.T.: 0.000 min  
 Response: 2719148  
 Conc: 20.34 ug/ml

**Instrument :**  
 FID\_D  
**ClientSampled :**  
 20 PPM ALIPHATIC HC STD

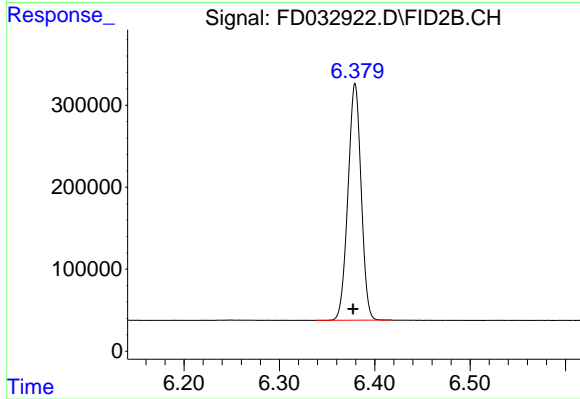
**Manual Integrations**  
**APPROVED**  
 Sohil  
 4/15/2020 11:40:31 AM



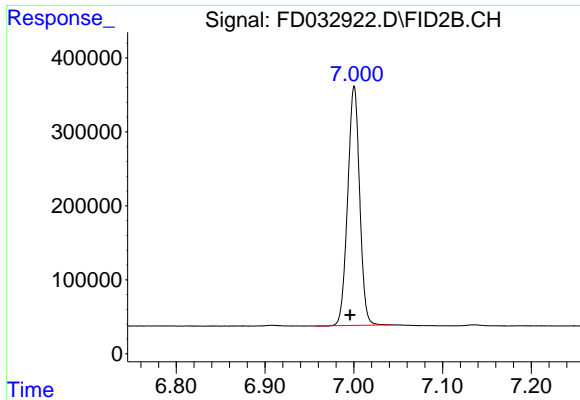
#2 n-Decane (C10)  
 R.T.: 4.373 min  
 Delta R.T.: 0.001 min  
 Response: 2742765  
 Conc: 20.47 ug/ml



#3 A~Naphthalene (C11.7)  
 R.T.: 5.949 min  
 Delta R.T.: 0.003 min  
 Response: 3017914  
 Conc: 20.48 ug/ml



#4 n-Dodecane (C12)  
 R.T.: 6.379 min  
 Delta R.T.: 0.002 min  
 Response: 2780847  
 Conc: 20.51 ug/ml



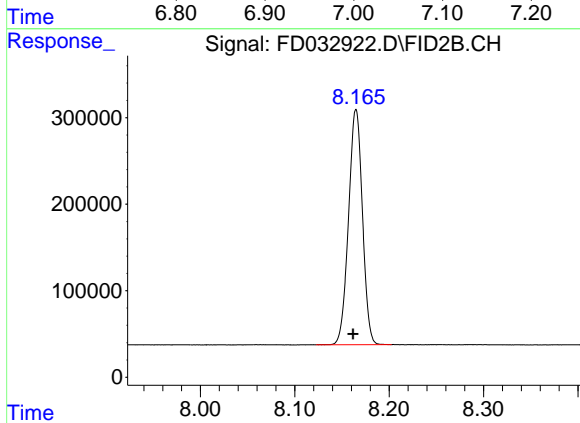
#5 A~2-methylnaphthalene (C12.89)

R.T.: 7.001 min  
Delta R.T.: 0.005 min  
Response: 3029804  
Conc: 20.39 ug/ml

Instrument :  
FID\_D  
ClientSampled :  
20 PPM ALIPHATIC HC STD

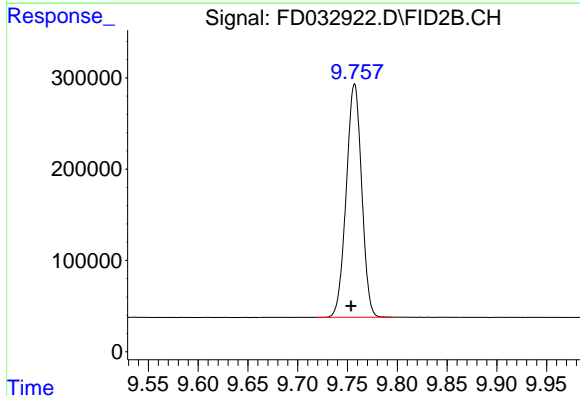
Manual Integrations  
APPROVED

Sohil  
4/15/2020 11:40:31 AM



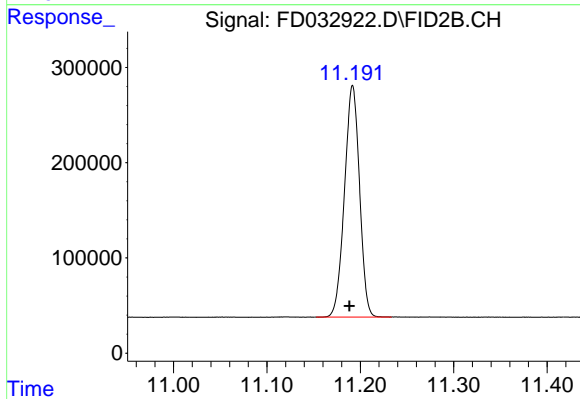
#6 n-Tetradecane (C14)

R.T.: 8.165 min  
Delta R.T.: 0.003 min  
Response: 2782671  
Conc: 20.35 ug/ml



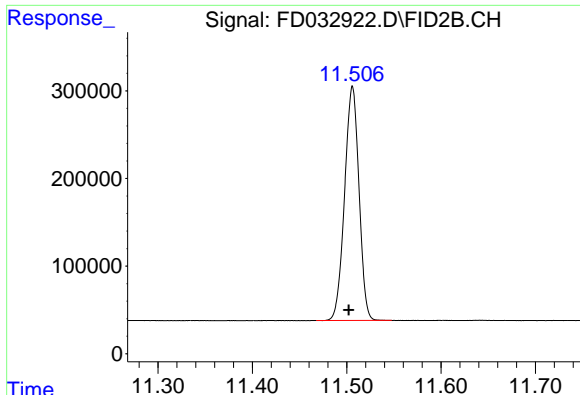
#7 n-Hexadecane (C16)

R.T.: 9.757 min  
Delta R.T.: 0.003 min  
Response: 2759915  
Conc: 20.09 ug/ml



#8 n-Octadecane (C18)

R.T.: 11.192 min  
Delta R.T.: 0.003 min  
Response: 2720057  
Conc: 19.64 ug/ml



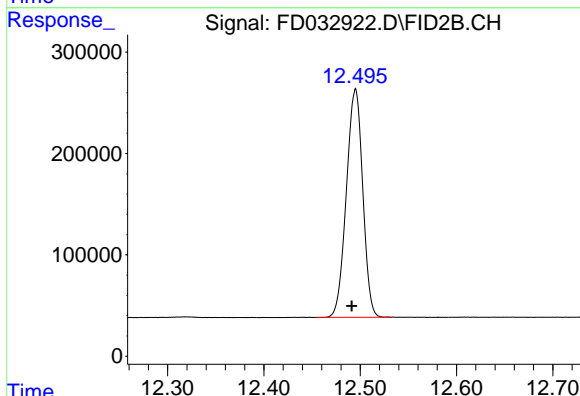
#9 ortho-Terphenyl (SURR)

R.T.: 11.506 min  
 Delta R.T.: 0.004 min  
 Response: 2833055  
 Conc: 18.86 ug/ml

Instrument :  
 FID\_D  
 ClientSampled :  
 20 PPM ALIPHATIC HC STD

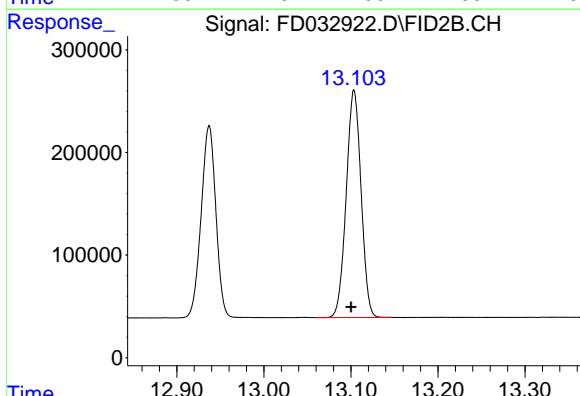
Manual Integrations  
 APPROVED

Sohil  
 4/15/2020 11:40:31 AM



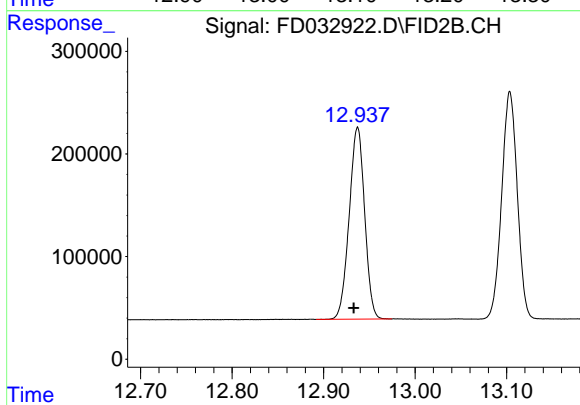
#10 n-Eicosane (C20)

R.T.: 12.495 min  
 Delta R.T.: 0.004 min  
 Response: 2649251  
 Conc: 19.07 ug/ml



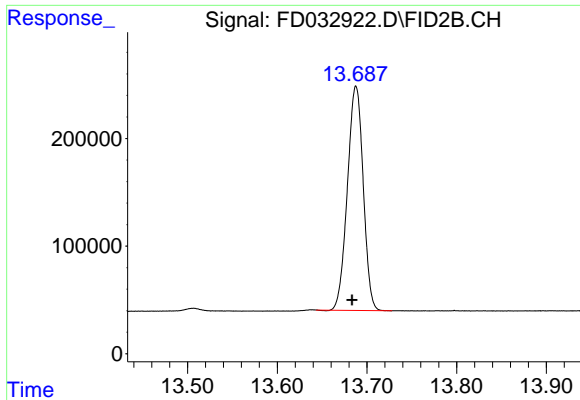
#11 n-Heneicosane (C21)

R.T.: 13.104 min  
 Delta R.T.: 0.003 min  
 Response: 2624541  
 Conc: 18.74 ug/ml



#12 1-chlorooctadecane (SURR)

R.T.: 12.937 min  
 Delta R.T.: 0.004 min  
 Response: 2194450  
 Conc: 18.70 ug/ml



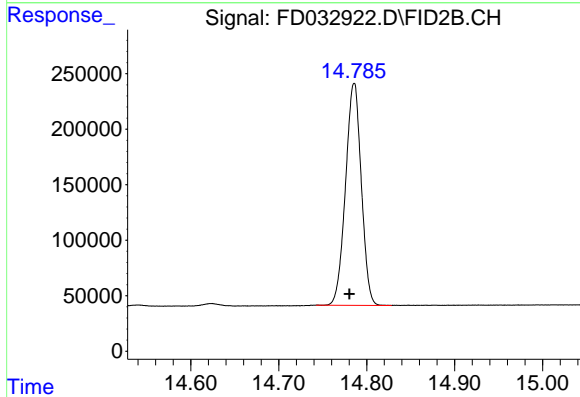
#13 n-Docosane (C22)

R.T.: 13.688 min  
 Delta R.T.: 0.004 min  
 Response: 2555622  
 Conc: 18.41 ug/ml

Instrument :  
 FID\_D  
 ClientSampled :  
 20 PPM ALIPHATIC HC STD

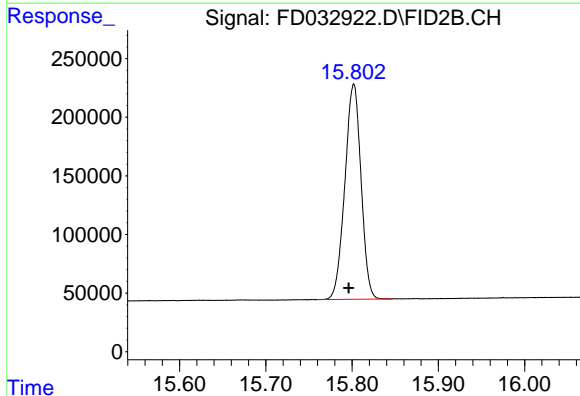
Manual Integrations  
 APPROVED

Sohil  
 4/15/2020 11:40:31 AM



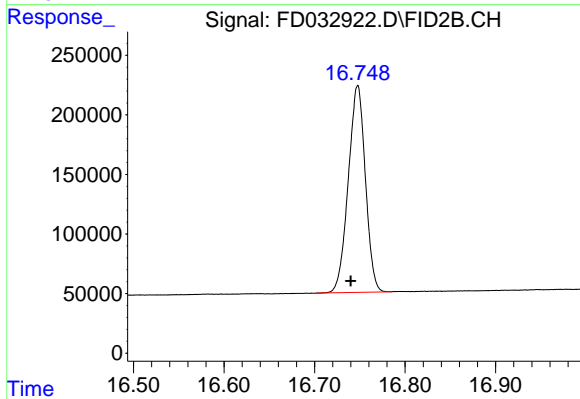
#14 n-Tetracosane (C24)

R.T.: 14.786 min  
 Delta R.T.: 0.005 min  
 Response: 2490092  
 Conc: 18.15 ug/ml



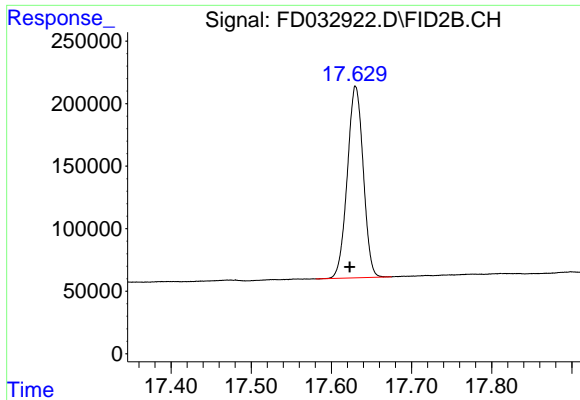
#15 n-Hexacosane (C26)

R.T.: 15.802 min  
 Delta R.T.: 0.006 min  
 Response: 2389371  
 Conc: 17.97 ug/ml



#16 n-Octacosane (C28)

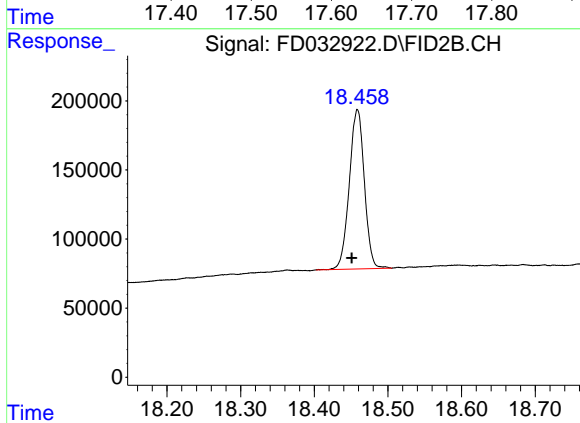
R.T.: 16.748 min  
 Delta R.T.: 0.008 min  
 Response: 2277460  
 Conc: 18.04 ug/ml



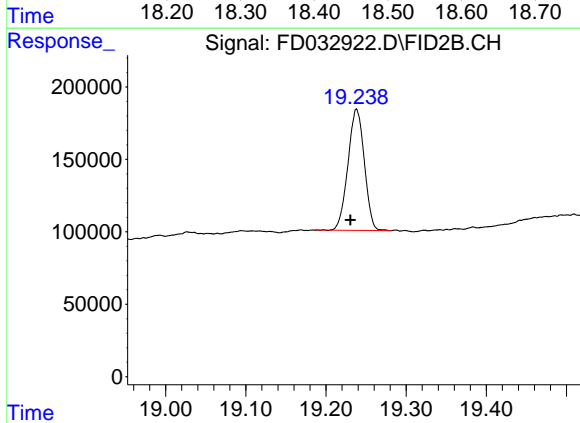
#17 n-Tricontane (C30)  
 R.T.: 17.630 min  
 Delta R.T.: 0.007 min  
 Response: 2111982  
 Conc: 18.55 ug/ml

**Instrument :**  
 FID\_D  
**ClientSampled :**  
 20 PPM ALIPHATIC HC STD

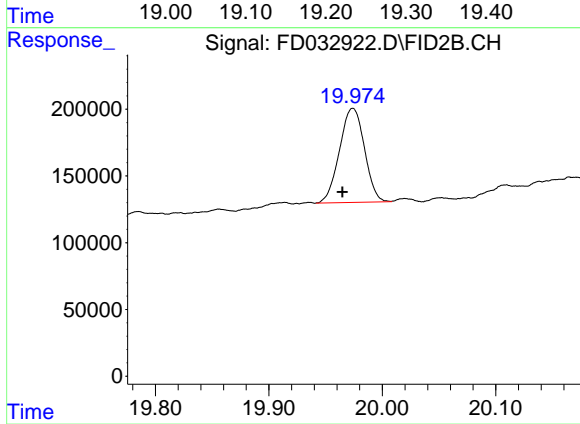
**Manual Integrations**  
**APPROVED**  
 Sohil  
 4/15/2020 11:40:31 AM



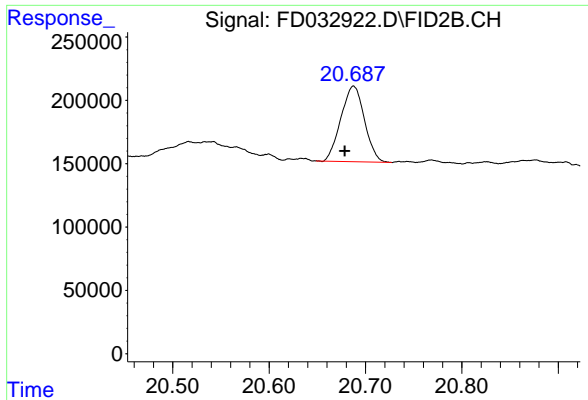
#18 n-Dotriacontane (C32)  
 R.T.: 18.459 min  
 Delta R.T.: 0.008 min  
 Response: 1642023  
 Conc: 19.55 ug/ml



#19 n-Tetratriacontane (C34)  
 R.T.: 19.238 min  
 Delta R.T.: 0.008 min  
 Response: 1189608  
 Conc: 19.61 ug/ml



#20 n-Hexatriacontane (C36)  
 R.T.: 19.974 min  
 Delta R.T.: 0.009 min  
 Response: 1078569  
 Conc: 21.50 ug/ml m



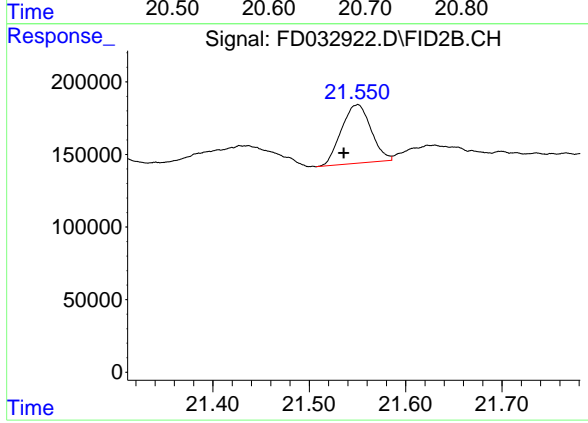
#21 n-Octatriacontane (C38)

R.T.: 20.688 min  
Delta R.T.: 0.009 min  
Response: 1012717  
Conc: 21.04 ug/ml

Instrument :  
FID\_D  
ClientSampled :  
20 PPM ALIPHATIC HC STD

Manual Integrations  
APPROVED

Sohil  
4/15/2020 11:40:31 AM



#22 n-Tetracontane (C40)

R.T.: 21.550 min  
Delta R.T.: 0.015 min  
Response: 862114  
Conc: 17.09 ug/ml