

Data Path : Z:\pestpcbsrv\HPCHEM1\FID_D\Data\FD041719AR\
 Data File : FD028957.D
 Signal(s) : FID2B.CH
 Acq On : 17 Apr 2019 21:01
 Operator : AJ\SJ
 Sample : K2389-05
 Misc :
 ALS Vial : 63 Sample Multiplier: 1

Integration File: autoint1.e
 Quant Time: Apr 18 04:34:40 2019
 Quant Method : Z:\pestpcbsrv\HPCHEM1\FID_D\methods\Aromatic EPH 032519.M
 Quant Title : GC Extractables
 QLast Update : Tue Mar 26 06:44:45 2019
 Response via : Initial Calibration
 Integrator: ChemStation 6890 Scale Mode: Large solvent peaks clipped

Volume Inj. : 1 µl
 Signal Phase : Rxi-1ms
 Signal Info : 20M x 0.18mm x 0.18µm

Compound	R.T.	Response	Conc Units

System Monitoring Compounds			
4) S 2-Bromonaphthalene (S...	7.092	4778447	50.366 ug/ml
Spiked Amount 50.000		Recovery =	100.73%
6) S 2-Fluorobiphenyl (SURR)	7.958	3341460	51.256 ug/ml
Spiked Amount 50.000 Range 0 - 131		Recovery =	102.51%
11) S ortho-Terphenyl (SURR)	10.997	4940126	44.399 ug/ml
Spiked Amount 50.000		Recovery =	88.80%
Target Compounds			
13) T Pyrene (C20.8)	12.416	1333784	12.386 ug/ml

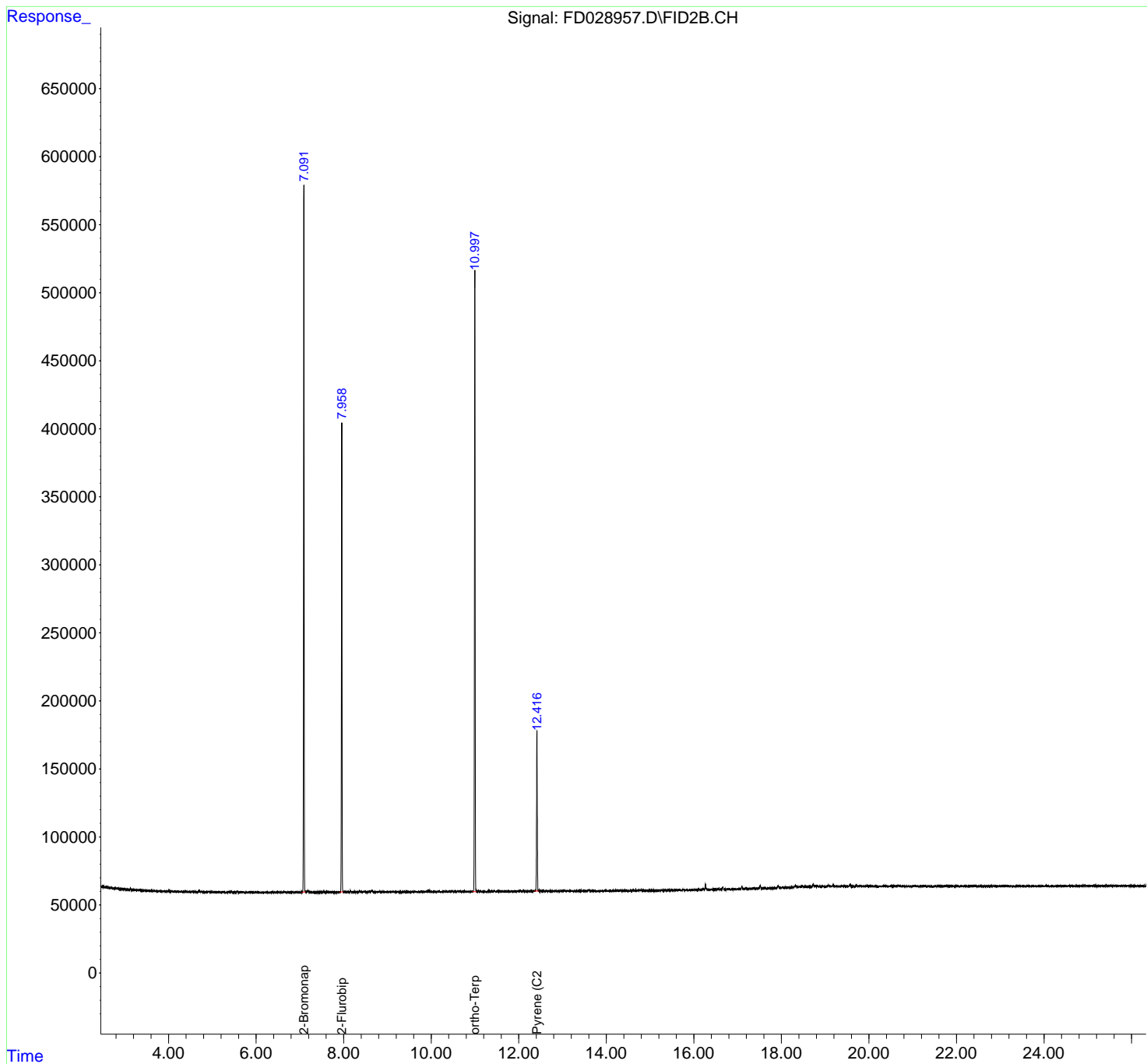
(f)=RT Delta > 1/2 Window

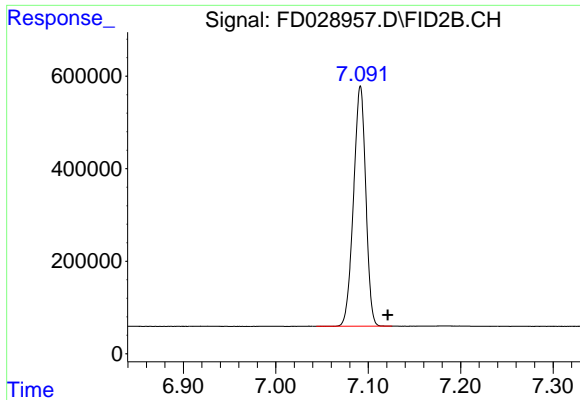
(m)=manual int.

Data Path : Z:\pestpcbsrv\HPCHEM1\FID_D\Data\FD041719AR\
 Data File : FD028957.D
 Signal(s) : FID2B.CH
 Acq On : 17 Apr 2019 21:01
 Operator : AJ\SJ
 Sample : K2389-05
 Misc :
 ALS Vial : 63 Sample Multiplier: 1

Integration File: autoint1.e
 Quant Time: Apr 18 04:34:40 2019
 Quant Method : Z:\pestpcbsrv\HPCHEM1\FID_D\methods\Aromatic EPH 032519.M
 Quant Title : GC Extractables
 QLast Update : Tue Mar 26 06:44:45 2019
 Response via : Initial Calibration
 Integrator: ChemStation 6890 Scale Mode: Large solvent peaks clipped

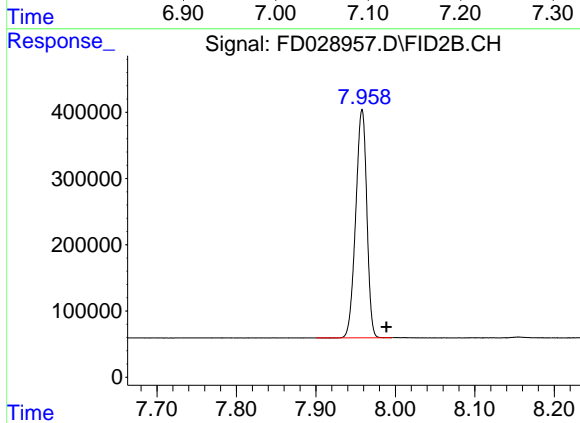
Volume Inj. : 1 µl
 Signal Phase : Rxi-1ms
 Signal Info : 20M x 0.18mm x 0.18µm





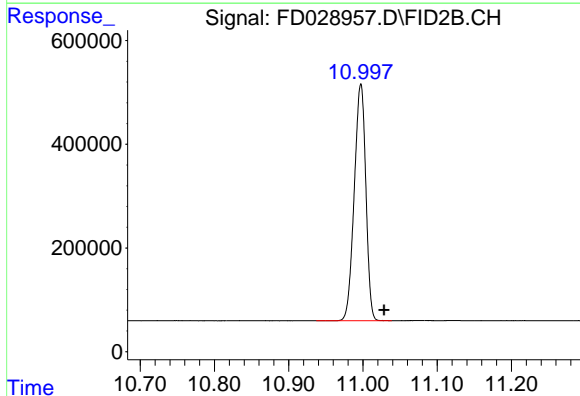
#4 2-Bromonaphthalene (SURR)

R.T.: 7.092 min
Delta R.T.: -0.029 min
Response: 4778447
Conc: 50.37 ug/ml



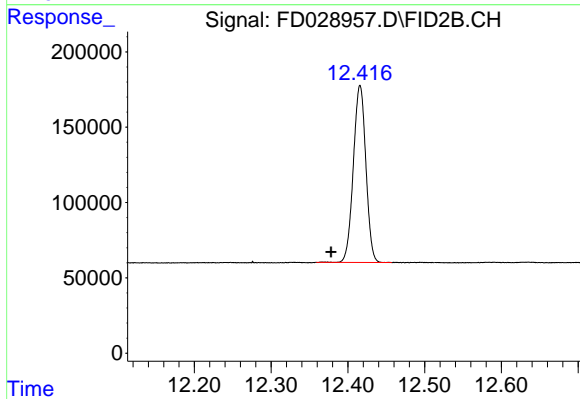
#6 2-Fluorobiphenyl (SURR)

R.T.: 7.958 min
Delta R.T.: -0.030 min
Response: 3341460
Conc: 51.26 ug/ml



#11 ortho-Terphenyl (SURR)

R.T.: 10.997 min
Delta R.T.: -0.031 min
Response: 4940126
Conc: 44.40 ug/ml



#13 Pyrene (C20.8)

R.T.: 12.416 min
Delta R.T.: 0.038 min
Response: 1333784
Conc: 12.39 ug/ml