

Data Path : Z:\pestpcbsrv\HPCHEM1\FID_D\Data\FD041820AL\
 Data File : FD032992.D
 Signal(s) : FID2B.CH
 Acq On : 18 Apr 2020 22:11
 Operator : DD\AJ
 Sample : L2245-35
 Misc :
 ALS Vial : 66 Sample Multiplier: 1

Instrument :
 FID_D
 ClientSampleId :

Integration File: autoint1.e
 Quant Time: Apr 19 22:19:10 2020
 Quant Method : Z:\pestpcbsrv\HPCHEM1\FID_D\methods\Alaphatic EPH 040720.M
 Quant Title : GC Extractables
 QLast Update : Tue Apr 07 14:10:50 2020
 Response via : Initial Calibration
 Integrator: ChemStation 6890 Scale Mode: Large solvent peaks clipped

Volume Inj. : 1 ul
 Signal Phase : Rxi-1ms
 Signal Info : 20M x 0.18mm x 0.18um

Compound	R.T.	Response	Conc Units

System Monitoring Compounds			
9) S ortho-Terphenyl (SURR)	11.501	4939143	32.872 ug/ml
Spiked Amount	50.000	Recovery	= 65.74%
12) S 1-chlorooctadecane (S...	12.931	3585512	30.548 ug/ml
Spiked Amount	50.000	Recovery	= 61.10%
Target Compounds			
5) T A~2-methylnaphthalene...	6.991	269293	1.813 ug/ml
6) T n-Tetradecane (C14)	8.218f	173916	1.272 ug/ml
10) T n-Eicosane (C20)	12.547f	1779161	12.808 ug/ml
14) T n-Tetracosane (C24)	14.754	841015	6.129 ug/ml
16) T n-Octacosane (C28)	16.744	398315	3.156 ug/ml
17) T n-Tricontane (C30)	17.622	228112	2.004 ug/ml
18) T n-Dotriacontane (C32)	18.405	292981	3.488 ug/ml

(f)=RT Delta > 1/2 Window

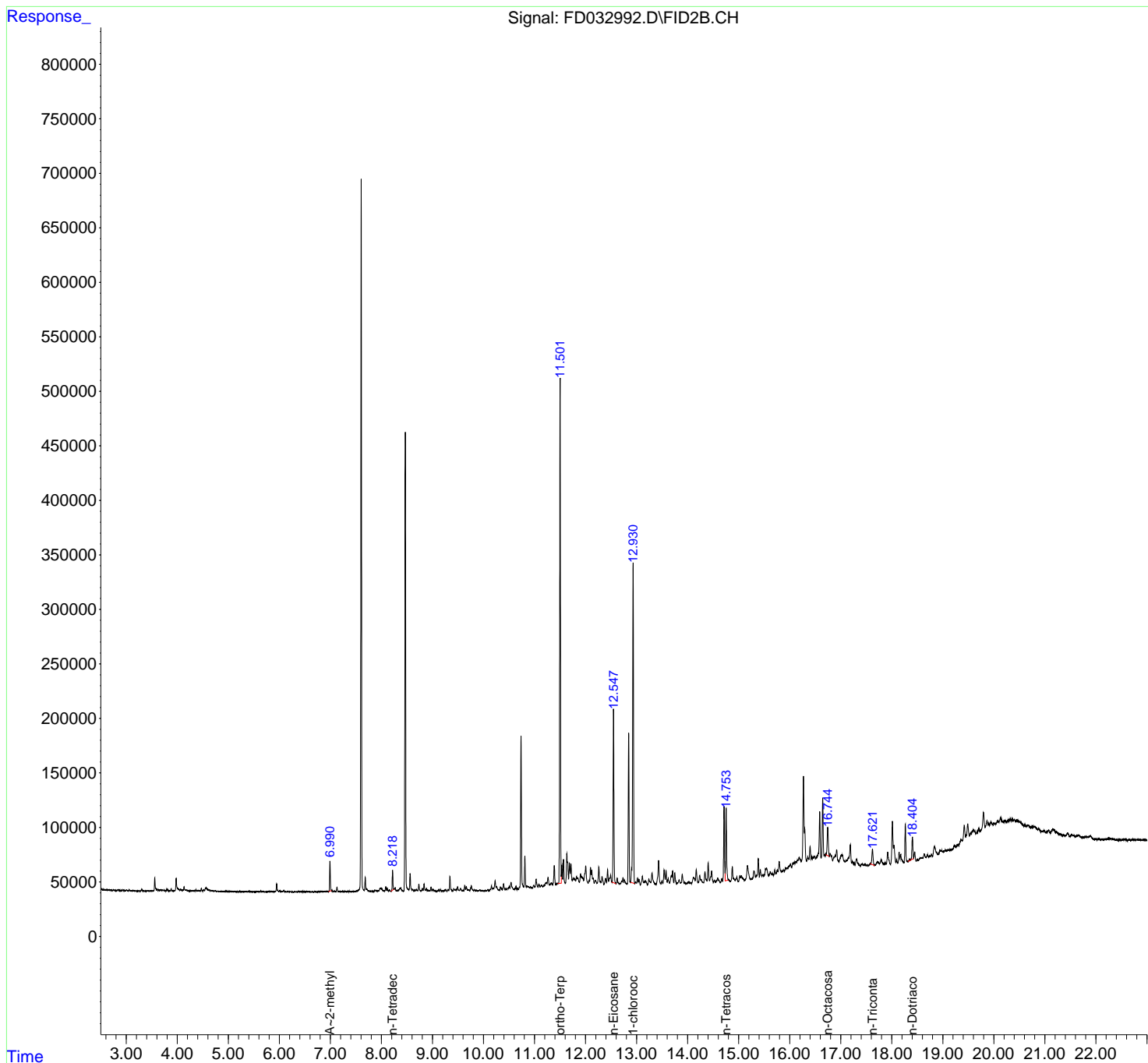
(m)=manual int.

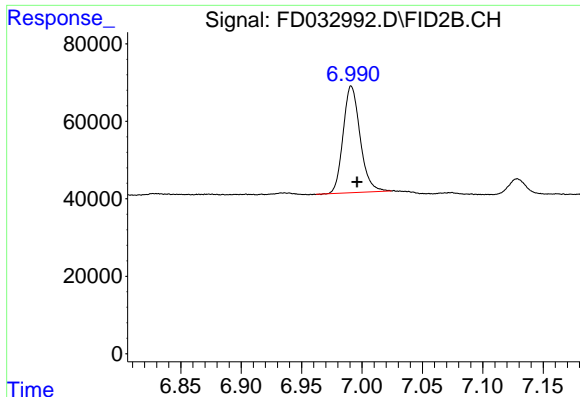
Data Path : Z:\pestpcbsrv\HPCHEM1\FID_D\Data\FD041820AL\
 Data File : FD032992.D
 Signal(s) : FID2B.CH
 Acq On : 18 Apr 2020 22:11
 Operator : DD\AJ
 Sample : L2245-35
 Misc :
 ALS Vial : 66 Sample Multiplier: 1

Instrument :
 FID_D
 ClientSampleId :

Integration File: autoint1.e
 Quant Time: Apr 19 22:19:10 2020
 Quant Method : Z:\pestpcbsrv\HPCHEM1\FID_D\methods\Alaphatic EPH 040720.M
 Quant Title : GC Extractables
 QLast Update : Tue Apr 07 14:10:50 2020
 Response via : Initial Calibration
 Integrator: ChemStation 6890 Scale Mode: Large solvent peaks clipped

Volume Inj. : 1 ul
 Signal Phase : Rxi-1ms
 Signal Info : 20M x 0.18mm x 0.18um

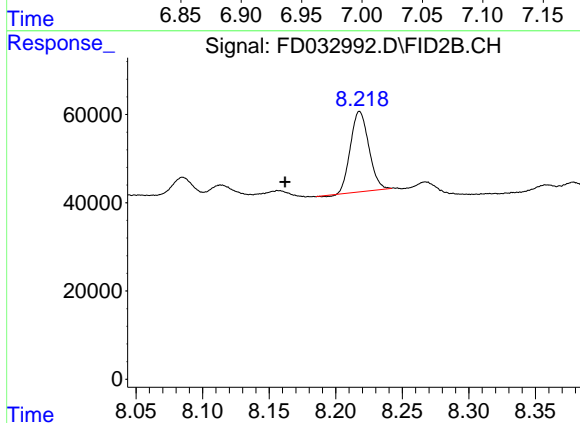




#5 A~2-methylnaphthalene (C12.89)

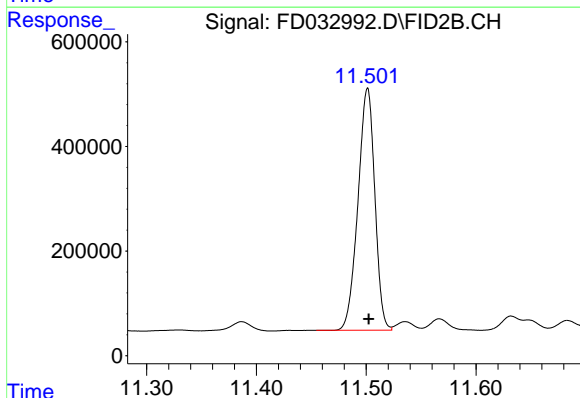
R.T.: 6.991 min
 Delta R.T.: -0.005 min
 Response: 269293
 Conc: 1.81 ug/ml

Instrument :
 FID_D
 ClientSampleId :



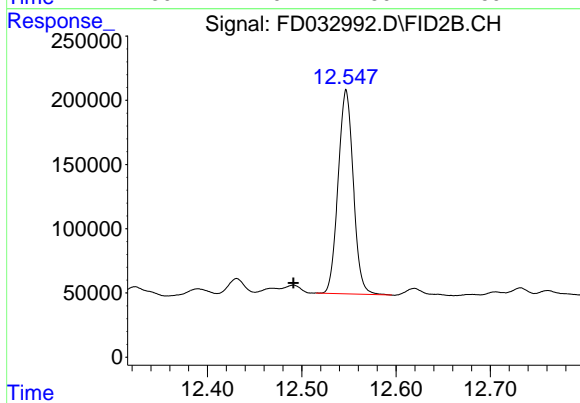
#6 n-Tetradecane (C14)

R.T.: 8.218 min
 Delta R.T.: 0.056 min
 Response: 173916
 Conc: 1.27 ug/ml



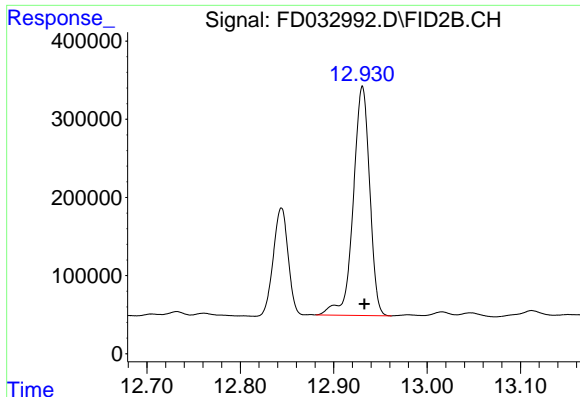
#9 ortho-Terphenyl (SURR)

R.T.: 11.501 min
 Delta R.T.: 0.000 min
 Response: 4939143
 Conc: 32.87 ug/ml



#10 n-Eicosane (C20)

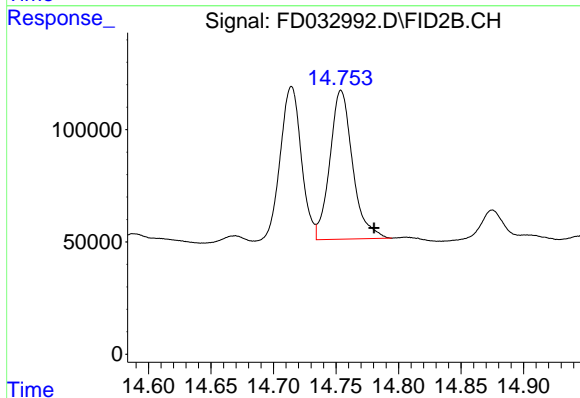
R.T.: 12.547 min
 Delta R.T.: 0.056 min
 Response: 1779161
 Conc: 12.81 ug/ml



#12 1-chlorooctadecane (SURR)

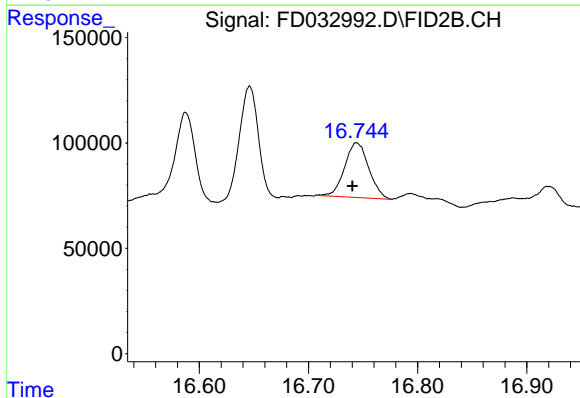
R.T.: 12.931 min
Delta R.T.: -0.002 min
Response: 3585512
Conc: 30.55 ug/ml

Instrument :
FID_D
ClientSampled :



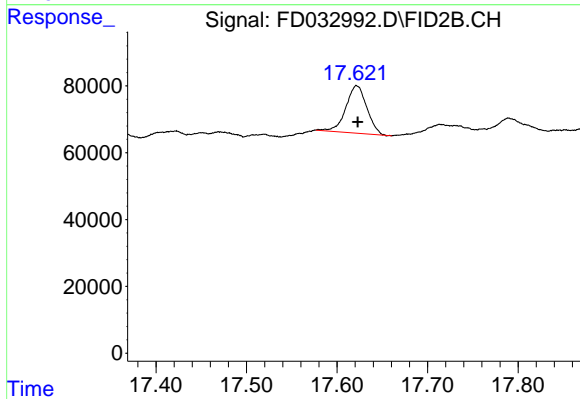
#14 n-Tetracosane (C24)

R.T.: 14.754 min
Delta R.T.: -0.026 min
Response: 841015
Conc: 6.13 ug/ml



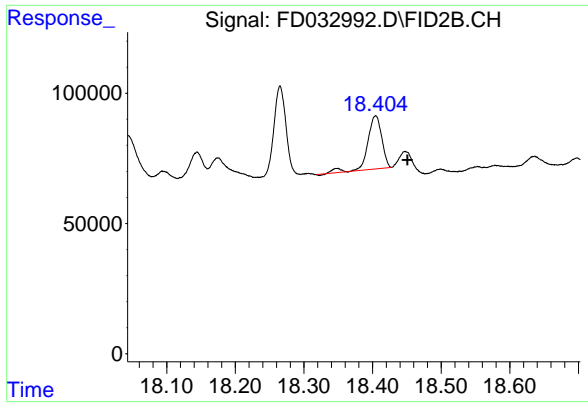
#16 n-Octacosane (C28)

R.T.: 16.744 min
Delta R.T.: 0.004 min
Response: 398315
Conc: 3.16 ug/ml



#17 n-Tricontane (C30)

R.T.: 17.622 min
Delta R.T.: -0.001 min
Response: 228112
Conc: 2.00 ug/ml



#18 n-Dotriacontane (C32)

R.T.: 18.405 min
Delta R.T.: -0.046 min
Response: 292981
Conc: 3.49 ug/ml

Instrument :
FID_D
ClientSampleId :