

Data Path : Z:\pestpcbsrv\HPCHEM1\FID\_D\Data\FD042120AR\  
Data File : FD033103.D  
Signal(s) : FID2B.CH  
Acq On : 22 Apr 2020 8:06  
Operator : DD\AJ  
Sample : I.BLK  
Misc :  
ALS Vial : 51 Sample Multiplier: 1

Instrument :  
FID\_D  
ClientSampleId :  
I.BLK

Integration File: autoint1.e  
Quant Time: Apr 22 08:34:14 2020  
Quant Method : Z:\pestpcbsrv\HPCHEM1\FID\_D\methods\Aromatic EPH 040620.M  
Quant Title : GC Extractables  
QLast Update : Tue Apr 07 02:14:39 2020  
Response via : Initial Calibration  
Integrator: ChemStation 6890 Scale Mode: Large solvent peaks clipped

Volume Inj. : 1 µl  
Signal Phase : Rxi-1ms  
Signal Info : 20M x 0.18mm x 0.18µm

Compound	R.T.	Response	Conc Units
----------	------	----------	------------

-----  
System Monitoring Compounds

Target Compounds  
-----

(f)=RT Delta > 1/2 Window

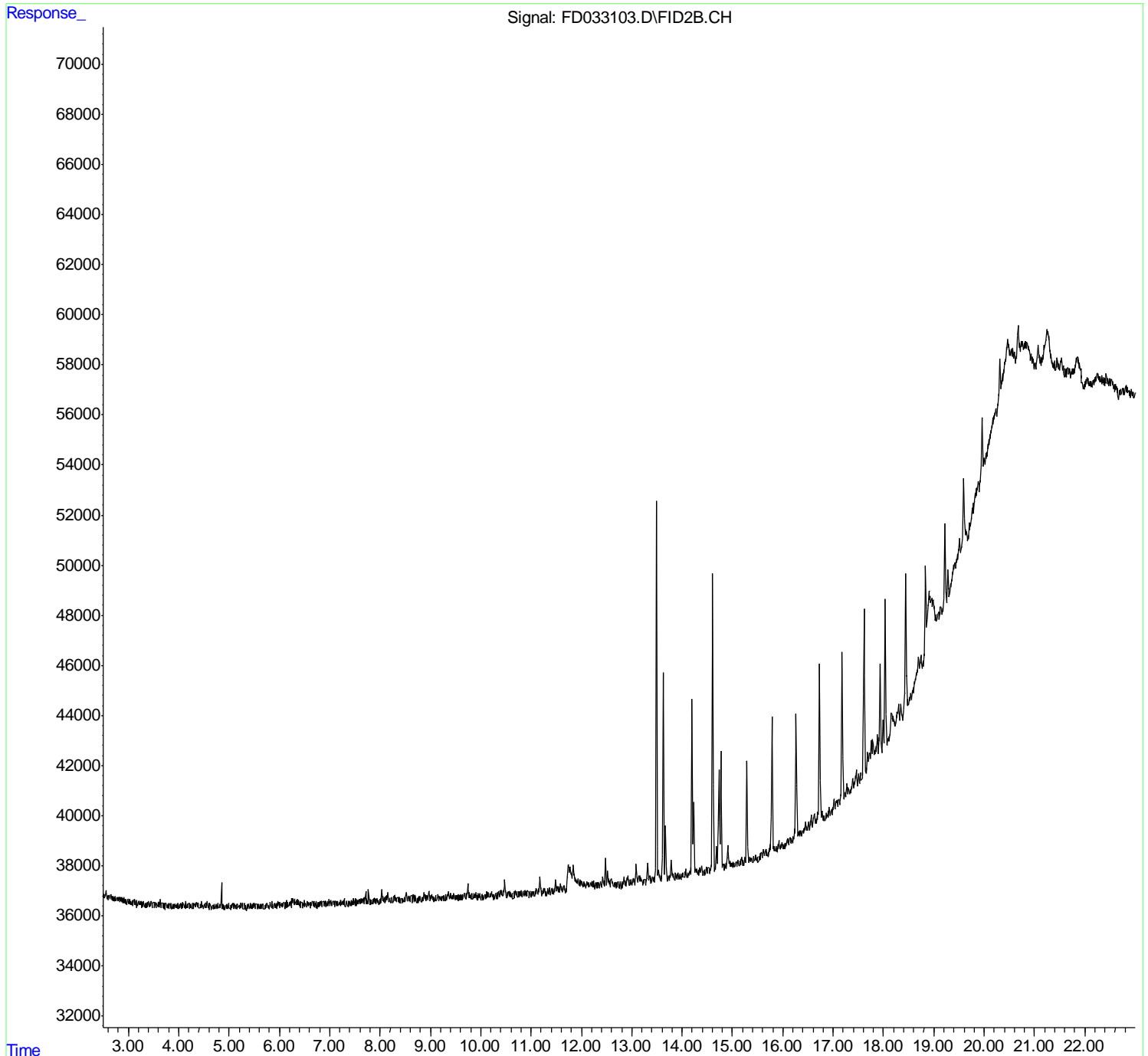
(m)=manual int.

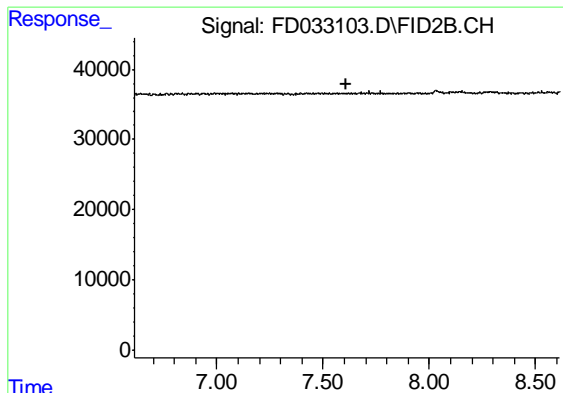
Data Path : Z:\pestpcbsrv\HPCHEM1\FID\_D\Data\FD042120AR\  
Data File : FD033103.D  
Signal(s) : FID2B.CH  
Acq On : 22 Apr 2020 8:06  
Operator : DD\AJ  
Sample : I.BLK  
Misc :  
ALS Vial : 51 Sample Multiplier: 1

Instrument :  
FID\_D  
ClientSampleId :  
I.BLK

Integration File: autoint1.e  
Quant Time: Apr 22 08:34:14 2020  
Quant Method : Z:\pestpcbsrv\HPCHEM1\FID\_D\methods\Aromatic EPH 040620.M  
Quant Title : GC Extractables  
QLast Update : Tue Apr 07 02:14:39 2020  
Response via : Initial Calibration  
Integrator: ChemStation 6890 Scale Mode: Large solvent peaks clipped

Volume Inj. : 1 µl  
Signal Phase : Rxi-1ms  
Signal Info : 20M x 0.18mm x 0.18µm

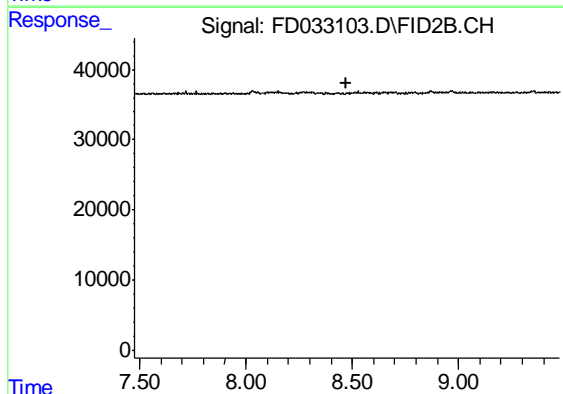




#4 2-Bromonaphthalene (SURR)

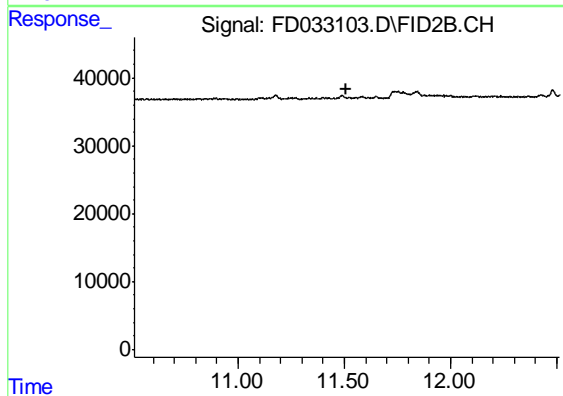
R.T.: 0.000 min  
Exp R.T. : 7.612 min  
Response: 0  
Conc: N.D.

Instrument :  
FID\_D  
ClientSampleId :  
I.BLK



#6 2-Fluorobiphenyl (SURR)

R.T.: 0.000 min  
Exp R.T. : 8.475 min  
Response: 0  
Conc: N.D.



#11 ortho-Terphenyl (SURR)

R.T.: 0.000 min  
Exp R.T. : 11.512 min  
Response: 0  
Conc: N.D.