

Data Path : Z:\pestpcbsrv\HPCHEM1\FID_D\Data\FD042219AL\
 Data File : FD029006.D
 Signal(s) : FID2B.CH
 Acq On : 22 Apr 2019 17:55
 Operator : AJ\SJ
 Sample : K2515-06
 Misc :
 ALS Vial : 61 Sample Multiplier: 1

Integration File: autoint1.e
 Quant Time: Apr 23 00:00:48 2019
 Quant Method : Z:\pestpcbsrv\HPCHEM1\FID_D\methods\Alaphatic EPH 041919.M
 Quant Title : GC Extractables
 QLast Update : Fri Apr 19 04:21:42 2019
 Response via : Initial Calibration
 Integrator: ChemStation 6890 Scale Mode: Large solvent peaks clipped

Volume Inj. : 1 ul
 Signal Phase : Rxi-1ms
 Signal Info : 20M x 0.18mm x 0.18um

Compound	R.T.	Response	Conc Units
System Monitoring Compounds			
9) S ortho-Terphenyl (SURR)	10.994	3673365	35.349 ug/ml
Spiked Amount	50.000	Recovery =	70.70%
12) S 1-chlorooctadecane (S...	12.415	2842104	33.009 ug/ml
Spiked Amount	50.000	Recovery =	66.02%

Target Compounds

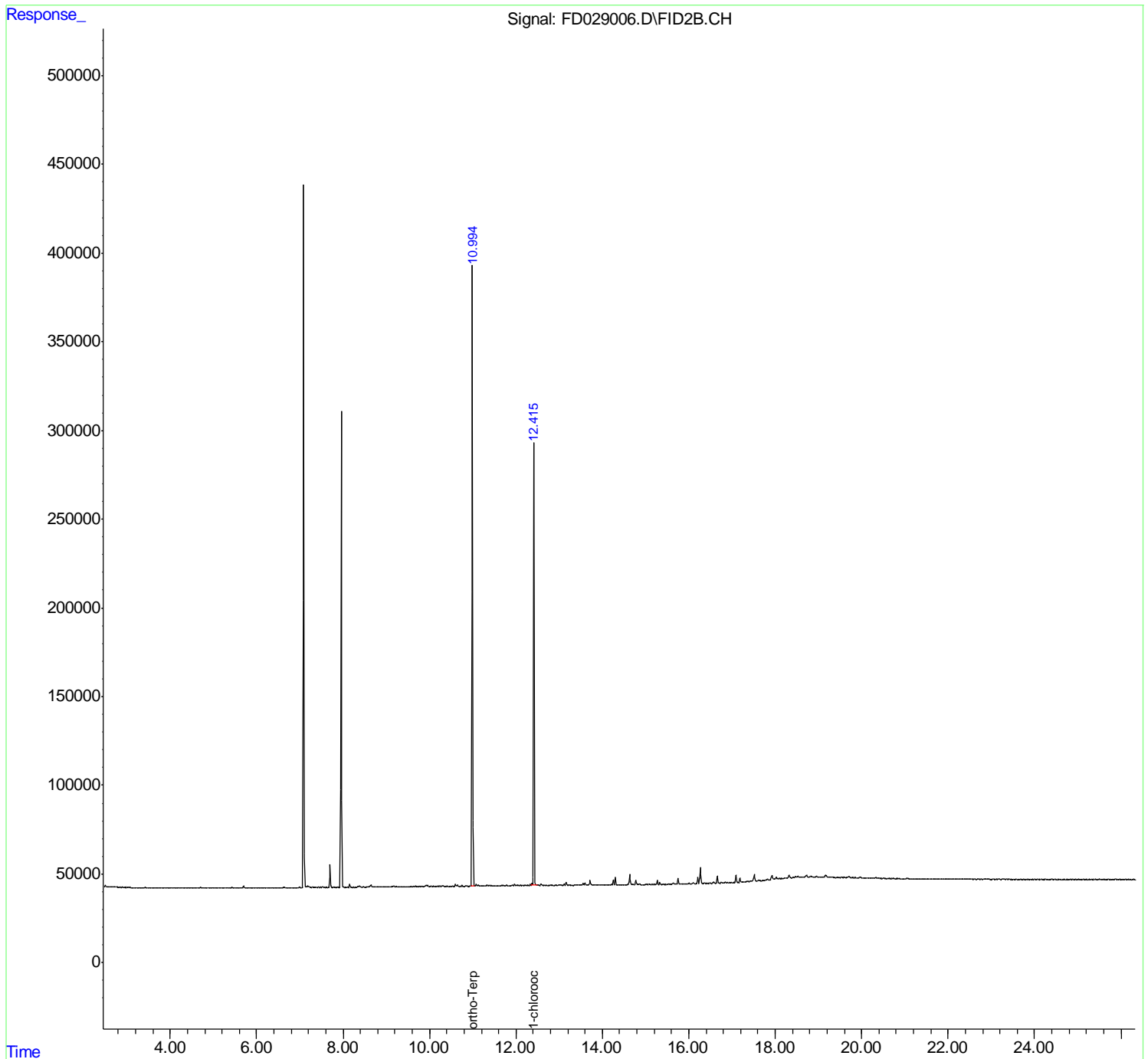
(f)=RT Delta > 1/2 Window

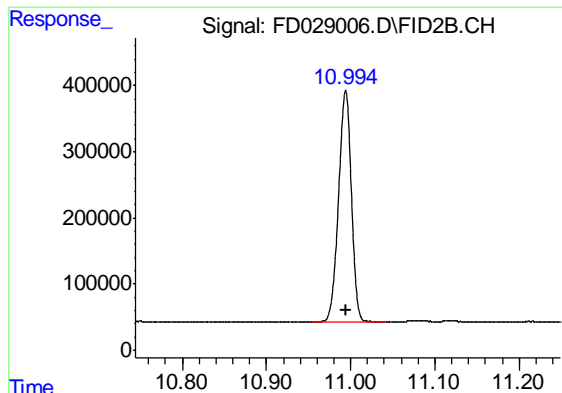
(m)=manual int.

Data Path : Z:\pestpcbsrv\HPCHEM1\FID_D\Data\FD042219AL\
 Data File : FD029006.D
 Signal(s) : FID2B.CH
 Acq On : 22 Apr 2019 17:55
 Operator : AJ\SJ
 Sample : K2515-06
 Misc :
 ALS Vial : 61 Sample Multiplier: 1

Integration File: autoint1.e
 Quant Time: Apr 23 00:00:48 2019
 Quant Method : Z:\pestpcbsrv\HPCHEM1\FID_D\methods\Alaphatic EPH 041919.M
 Quant Title : GC Extractables
 QLast Update : Fri Apr 19 04:21:42 2019
 Response via : Initial Calibration
 Integrator: ChemStation 6890 Scale Mode: Large solvent peaks clipped

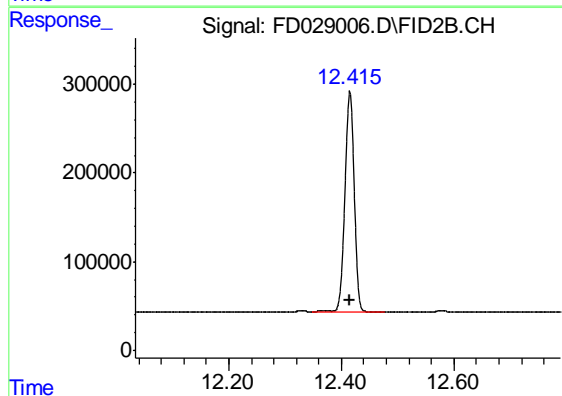
Volume Inj. : 1 ul
 Signal Phase : Rxi-1ms
 Signal Info : 20M x 0.18mm x 0.18um





#9 ortho-Terphenyl (SURR)

R.T.: 10.994 min
Delta R.T.: 0.000 min
Response: 3673365
Conc: 35.35 ug/ml



#12 1-chlorooctadecane (SURR)

R.T.: 12.415 min
Delta R.T.: 0.000 min
Response: 2842104
Conc: 33.01 ug/ml