

Data Path : Z:\pestpcbsrv\HPCHEM1\FID\_D\Data\FD042222AR\  
 Data File : FD042044.D  
 Signal(s) : FID2B.CH  
 Acq On : 22 Apr 2022 17:18  
 Operator : UA/NP  
 Sample : N2349-15  
 Misc :  
 ALS Vial : 64 Sample Multiplier: 1

Instrument :  
 FID\_D  
 ClientSampleId :

Integration File: autoint1.e  
 Quant Time: Apr 23 00:01:22 2022  
 Quant Method : Z:\pestpcbsrv\HPCHEM1\FID\_D\methods\Aromatic EPH 042122.M  
 Quant Title : GC Extractables  
 QLast Update : Thu Apr 21 17:32:22 2022  
 Response via : Initial Calibration  
 Integrator: ChemStation 6890 Scale Mode: Large solvent peaks clipped

Volume Inj. : 1 µl  
 Signal Phase : Rxi-1ms  
 Signal Info : 20M x 0.18mm x 0.18µm

Compound	R.T.	Response	Conc Units
-----			
System Monitoring Compounds			
4) S 2-Bromonaphthalene (S...	7.331	6039798	43.090 ug/ml
Spiked Amount 50.000		Recovery =	86.18%
6) S 2-Fluorobiphenyl (SURR)	8.236	478655	6.718 ug/ml
Spiked Amount 50.000 Range 0 - 131		Recovery =	13.44%
11) S ortho-Terphenyl (SURR)	11.208	5652060	32.609 ug/ml
Spiked Amount 50.000		Recovery =	65.22%
Target Compounds			
2) T Naphthalene (C11.7)	5.741f	38161	0.242 ug/ml
3) T 2-Methylnaphthalene (...)	6.800f	56861	0.393 ug/ml
5) T Acenaphthylene (C15.06)	8.008	57197	0.347 ug/ml
7) T Acenaphthene (C15.5)	8.287	136359	0.726 ug/ml
8) T Fluorene (C16.55)	9.062	171859	1.128 ug/ml
9) T Phenanthrene (C19.36)	10.436	30300	0.204 ug/ml
10) T Anthracene (C19.43)	10.509	267367	1.597 ug/ml
12) T Fluoranthene (C21.85)	12.285	555233	3.540 ug/ml
13) T Pyrene (C20.8)	12.566	627317	3.846 ug/ml
14) T Benzo[a]anthracene (C...	14.426	4901850	40.979 ug/ml
15) T Chrysene (C27.41)	14.447	2456030	13.387 ug/ml
16) T benzo[b]fluoranthene ...	15.995	260811	1.986 ug/ml
17) T Bnezo[k]fluoranthene ...	15.995	260811	1.509 ug/ml
18) T Benzo[a]pyrene (C31.34)	16.357	3276774	22.209 ug/ml
19) T Indeno[1,2,3-cd]pyren...	17.744	967897	9.697 ug/ml
20) T Dibenz[a,h]anthracene...	17.770	531601	3.387 ug/ml
21) T Benzo[g,h,i]perylene ...	17.991	719084	5.192 ug/ml

(f)=RT Delta > 1/2 Window

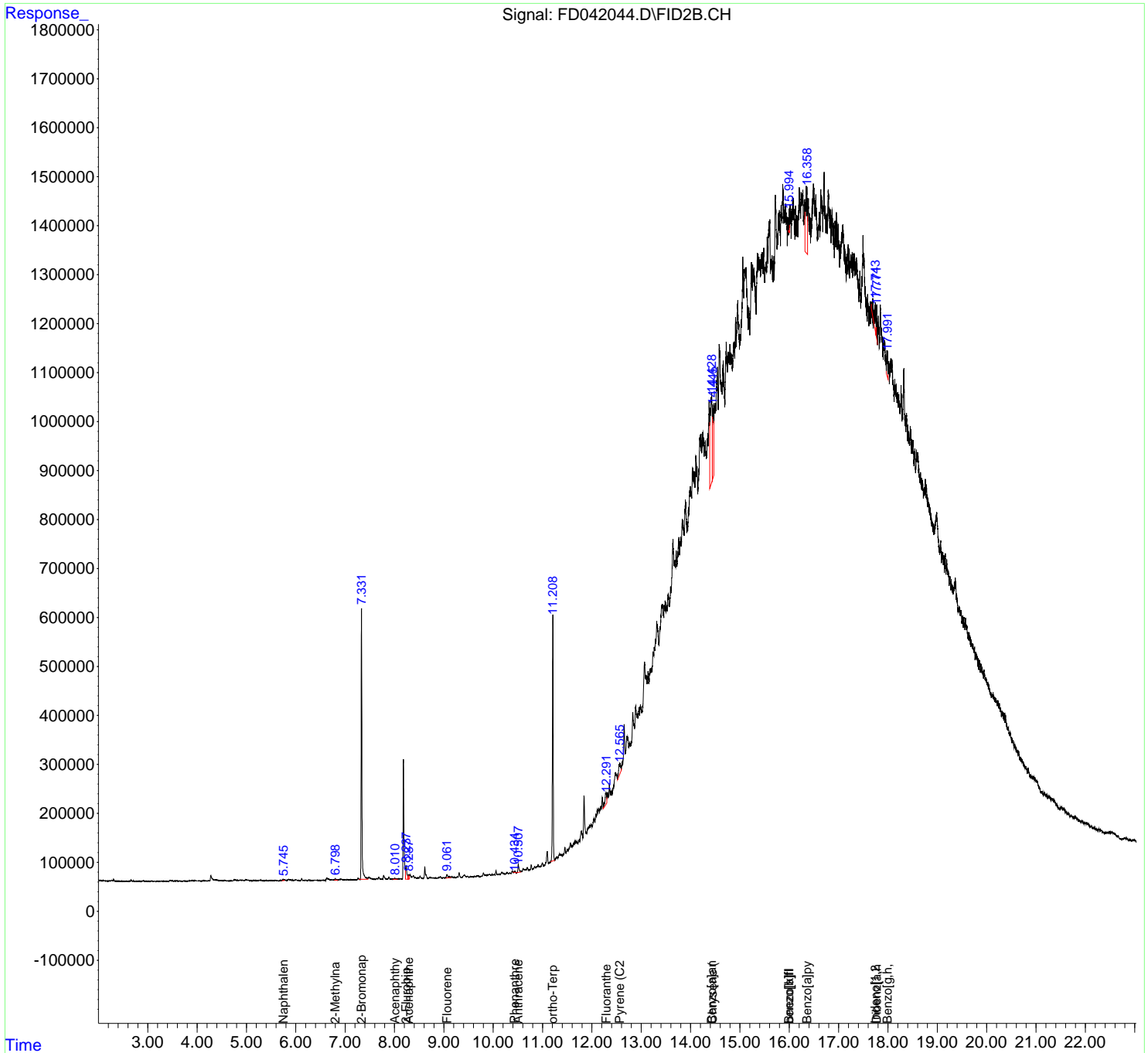
(m)=manual int.

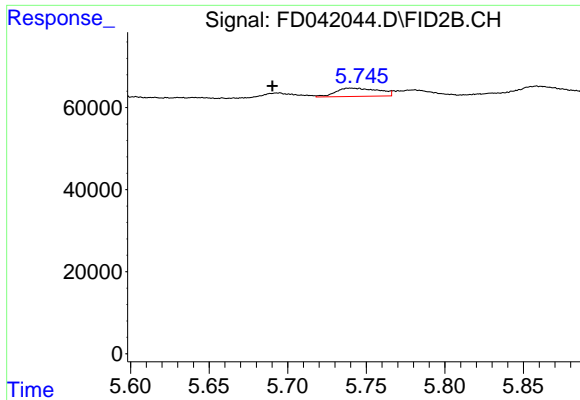
Data Path : Z:\pestpcbsrv\HPCHEM1\FID\_D\Data\FD042222AR\  
 Data File : FD042044.D  
 Signal(s) : FID2B.CH  
 Acq On : 22 Apr 2022 17:18  
 Operator : UA/NP  
 Sample : N2349-15  
 Misc :  
 ALS Vial : 64 Sample Multiplier: 1

Instrument :  
 FID\_D  
 ClientSampleId :

Integration File: autoint1.e  
 Quant Time: Apr 23 00:01:22 2022  
 Quant Method : Z:\pestpcbsrv\HPCHEM1\FID\_D\methods\Aromatic EPH 042122.M  
 Quant Title : GC Extractables  
 QLast Update : Thu Apr 21 17:32:22 2022  
 Response via : Initial Calibration  
 Integrator: ChemStation 6890 Scale Mode: Large solvent peaks clipped

Volume Inj. : 1 µl  
 Signal Phase : Rxi-1ms  
 Signal Info : 20M x 0.18mm x 0.18µm

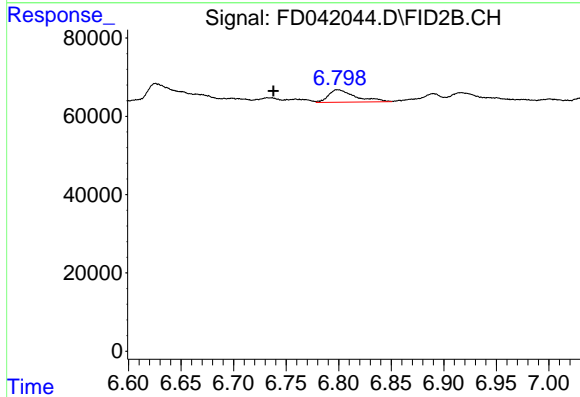




#2 Naphthalene (C11.7)

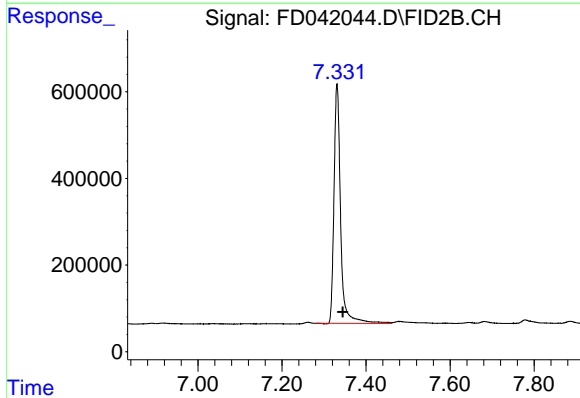
R.T.: 5.741 min  
 Delta R.T.: 0.051 min  
 Response: 38161  
 Conc: 0.24 ug/ml

Instrument :  
 FID\_D  
 ClientSampleId :



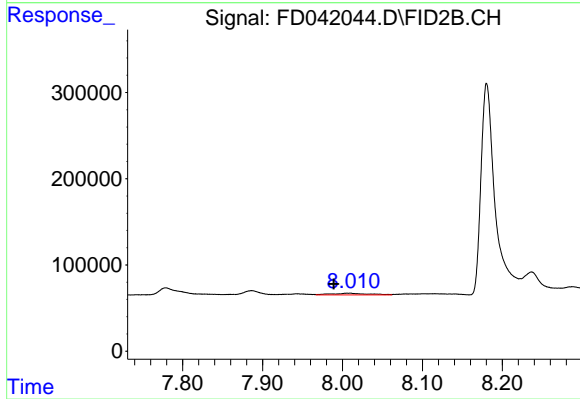
#3 2-Methylnaphthalene (C12.89)

R.T.: 6.800 min  
 Delta R.T.: 0.062 min  
 Response: 56861  
 Conc: 0.39 ug/ml



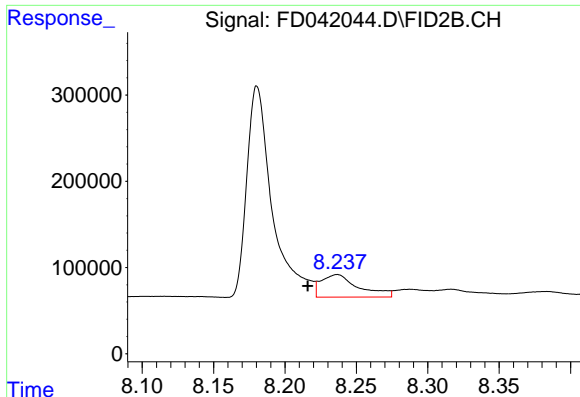
#4 2-Bromonaphthalene (SURR)

R.T.: 7.331 min  
 Delta R.T.: -0.014 min  
 Response: 6039798  
 Conc: 43.09 ug/ml



#5 Acenaphthylene (C15.06)

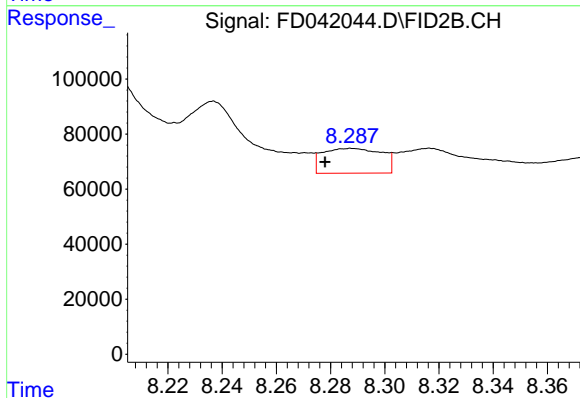
R.T.: 8.008 min  
 Delta R.T.: 0.018 min  
 Response: 57197  
 Conc: 0.35 ug/ml



#6 2-Fluorobiphenyl (SURR)

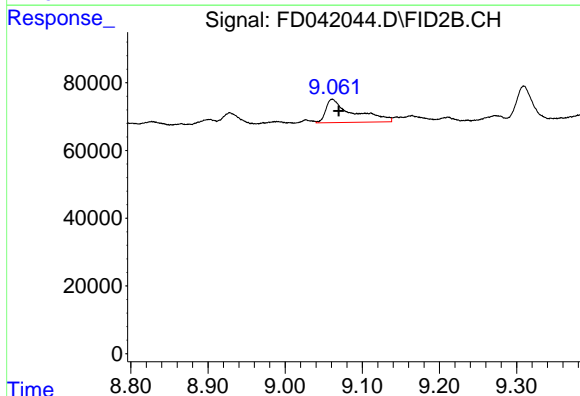
R.T.: 8.236 min  
 Delta R.T.: 0.020 min  
 Response: 478655  
 Conc: 6.72 ug/ml

Instrument :  
 FID\_D  
 ClientSampleId :



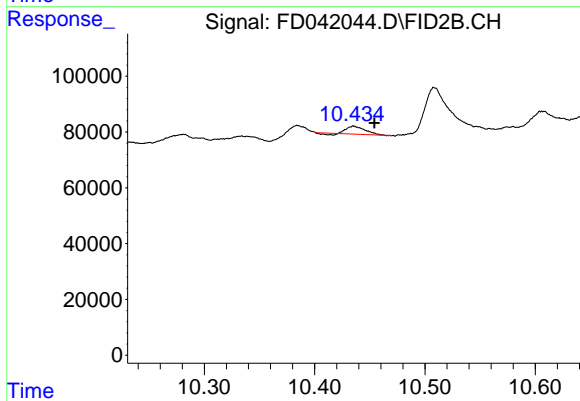
#7 Acenaphthene (C15.5)

R.T.: 8.287 min  
 Delta R.T.: 0.009 min  
 Response: 136359  
 Conc: 0.73 ug/ml



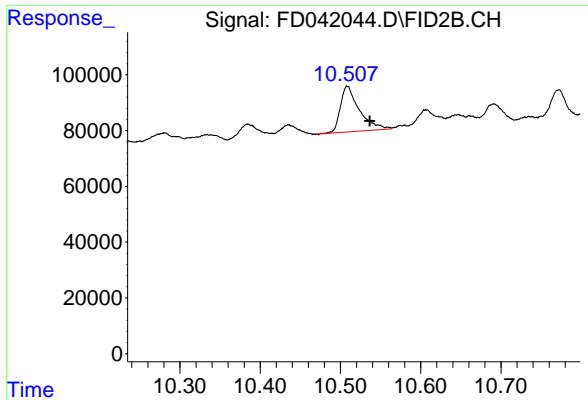
#8 Flouorene (C16.55)

R.T.: 9.062 min  
 Delta R.T.: -0.008 min  
 Response: 171859  
 Conc: 1.13 ug/ml



#9 Phenanthrene (C19.36)

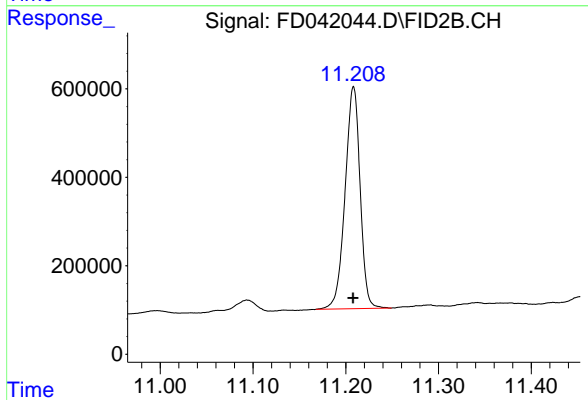
R.T.: 10.436 min  
 Delta R.T.: -0.018 min  
 Response: 30300  
 Conc: 0.20 ug/ml



#10 Anthracene (C19.43)

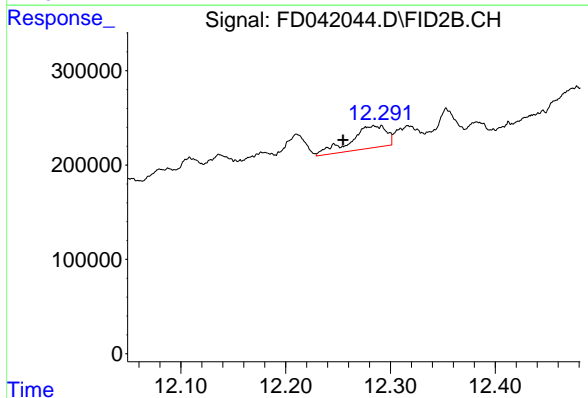
R.T.: 10.509 min  
 Delta R.T.: -0.028 min  
 Response: 267367  
 Conc: 1.60 ug/ml

Instrument :  
 FID\_D  
 ClientSampleId :



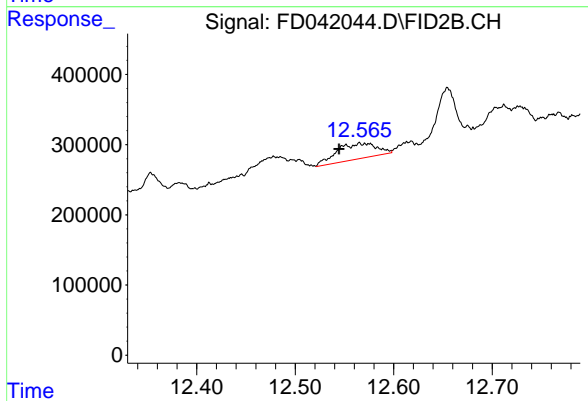
#11 ortho-Terphenyl (SURR)

R.T.: 11.208 min  
 Delta R.T.: 0.000 min  
 Response: 5652060  
 Conc: 32.61 ug/ml



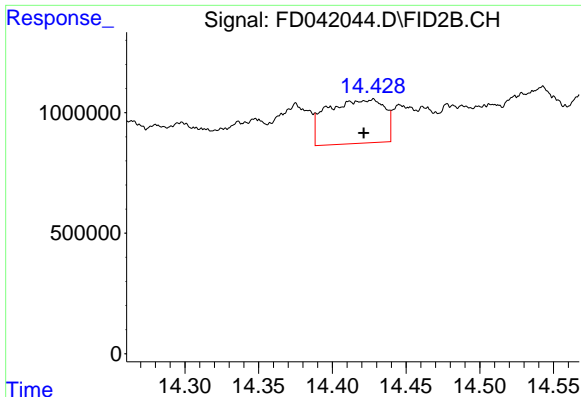
#12 Fluoranthene (C21.85)

R.T.: 12.285 min  
 Delta R.T.: 0.031 min  
 Response: 555233  
 Conc: 3.54 ug/ml



#13 Pyrene (C20.8)

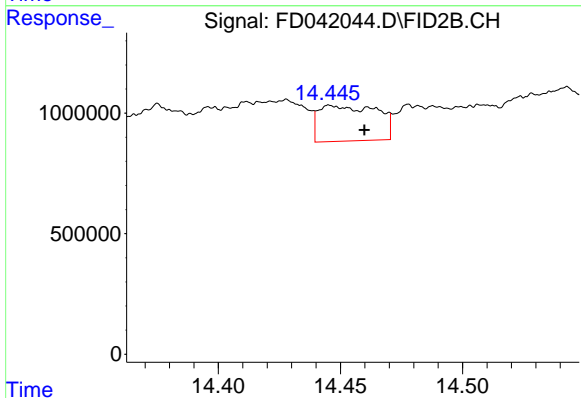
R.T.: 12.566 min  
 Delta R.T.: 0.022 min  
 Response: 627317  
 Conc: 3.85 ug/ml



#14 Benzo[a]anthracene (C26.37)

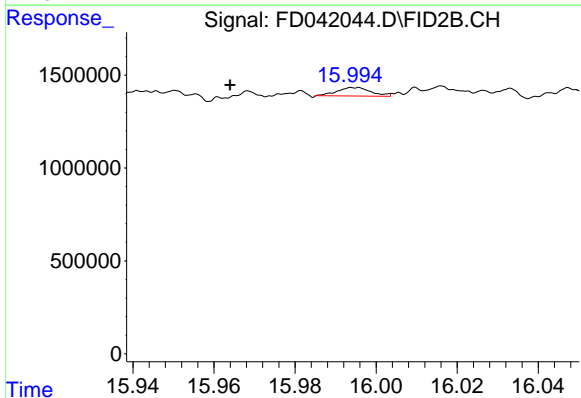
R.T.: 14.426 min  
 Delta R.T.: 0.005 min  
 Response: 4901850  
 Conc: 40.98 ug/ml

Instrument :  
 FID\_D  
 ClientSampleId :



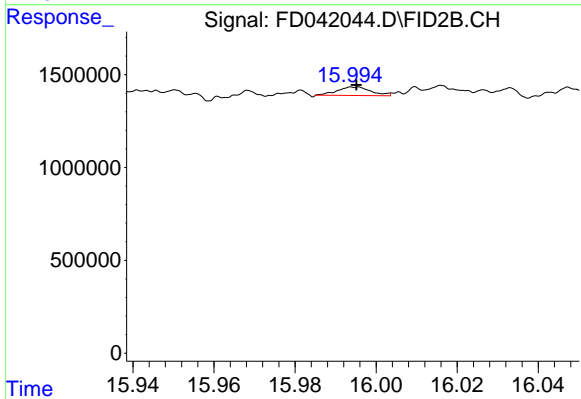
#15 Chrysene (C27.41)

R.T.: 14.447 min  
 Delta R.T.: -0.013 min  
 Response: 2456030  
 Conc: 13.39 ug/ml



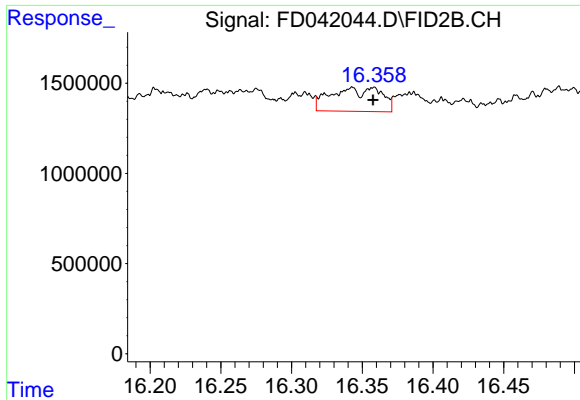
#16 benzo[b]fluoranthene (C30.41)

R.T.: 15.995 min  
 Delta R.T.: 0.031 min  
 Response: 260811  
 Conc: 1.99 ug/ml



#17 Bnezo[k]fluoranthene (C30.14)

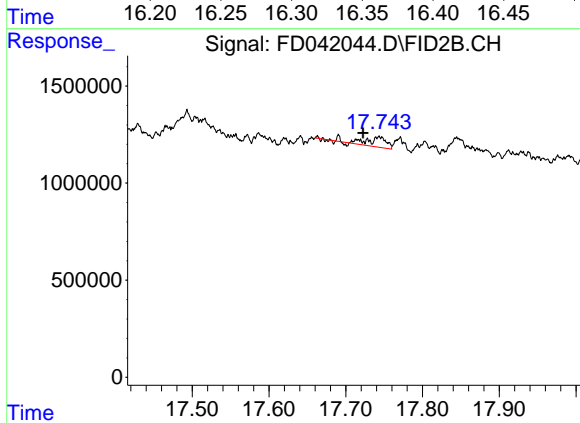
R.T.: 15.995 min  
 Delta R.T.: 0.000 min  
 Response: 260811  
 Conc: 1.51 ug/ml



#18 Benzo[a]pyrene (C31.34)

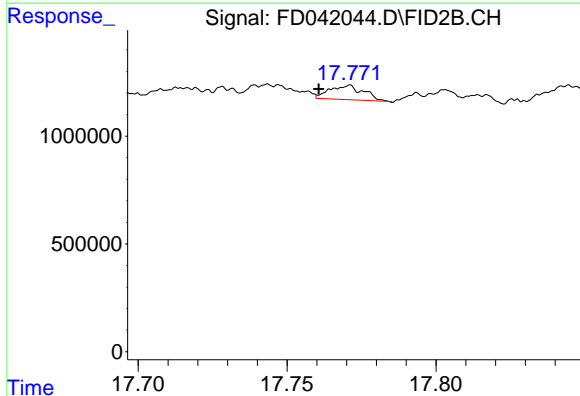
R.T.: 16.357 min  
 Delta R.T.: 0.000 min  
 Response: 3276774  
 Conc: 22.21 ug/ml

Instrument : FID\_D  
 ClientSampleId :



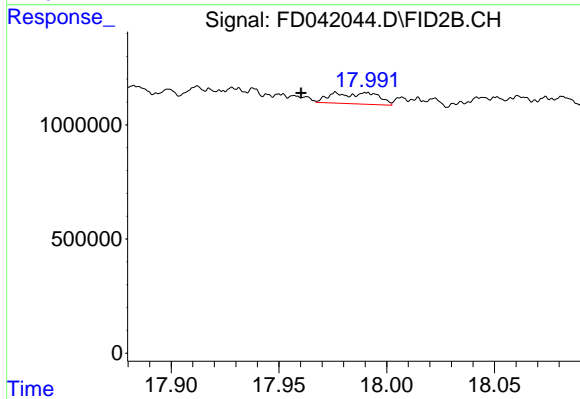
#19 Indeno[1,2,3-cd]pyrene (C35.01)

R.T.: 17.744 min  
 Delta R.T.: 0.022 min  
 Response: 967897  
 Conc: 9.70 ug/ml



#20 Dibenz[a,h]anthracene (C30.36)

R.T.: 17.770 min  
 Delta R.T.: 0.009 min  
 Response: 531601  
 Conc: 3.39 ug/ml



#21 Benzo[g,h,i]perylene (C34.01)

R.T.: 17.991 min  
 Delta R.T.: 0.030 min  
 Response: 719084  
 Conc: 5.19 ug/ml