

Data Path : Z:\pestpcbsrv\HPCHEM1\FID_D\Data\FD042222AR\
 Data File : FD042045.D
 Signal(s) : FID2B.CH
 Acq On : 22 Apr 2022 17:58
 Operator : UA/NP
 Sample : N2349-17
 Misc :
 ALS Vial : 65 Sample Multiplier: 1

Instrument :
 FID_D
 ClientSampleId :

Integration File: autoint1.e
 Quant Time: Apr 23 00:01:33 2022
 Quant Method : Z:\pestpcbsrv\HPCHEM1\FID_D\methods\Aromatic EPH 042122.M
 Quant Title : GC Extractables
 QLast Update : Thu Apr 21 17:32:22 2022
 Response via : Initial Calibration
 Integrator: ChemStation 6890 Scale Mode: Large solvent peaks clipped

Volume Inj. : 1 µl
 Signal Phase : Rxi-1ms
 Signal Info : 20M x 0.18mm x 0.18µm

Compound	R.T.	Response	Conc Units

System Monitoring Compounds			
4) S 2-Bromonaphthalene (S...	7.331	5669780	40.450 ug/ml
Spiked Amount 50.000		Recovery =	80.90%
6) S 2-Fluorobiphenyl (SURR)	8.235	500328	7.022 ug/ml
Spiked Amount 50.000 Range 0 - 131		Recovery =	14.04%
11) S ortho-Terphenyl (SURR)	11.208	5189624	29.941 ug/ml
Spiked Amount 50.000		Recovery =	59.88%
Target Compounds			
3) T 2-Methylnaphthalene (...)	6.801f	34547	0.239 ug/ml
7) T Acenaphthene (C15.5)	8.315	158853	0.846 ug/ml
8) T Flouorene (C16.55)	9.067	46303	0.304 ug/ml
9) T Phenanthrene (C19.36)	10.435	23275	0.157 ug/ml
10) T Anthracene (C19.43)	10.511	105770	0.632 ug/ml
12) T Fluoranthene (C21.85)	12.287	424644	2.707 ug/ml
13) T Pyrene (C20.8)	12.566	423495	2.596 ug/ml
14) T Benzo[a]anthracene (C...	14.418	9210198	76.996 ug/ml
15) T Chrysene (C27.41)	14.472	1860799	10.143 ug/ml
18) T Benzo[a]pyrene (C31.34)	16.384	1475999	10.004 ug/ml
19) T Indeno[1,2,3-cd]pyren...	17.727	985238	9.871 ug/ml
20) T Dibenz[a,h]anthracene...	17.789	287398	1.831 ug/ml
21) T Benzo[g,h,i]perylene ...	17.940	478231	3.453 ug/ml

(f)=RT Delta > 1/2 Window

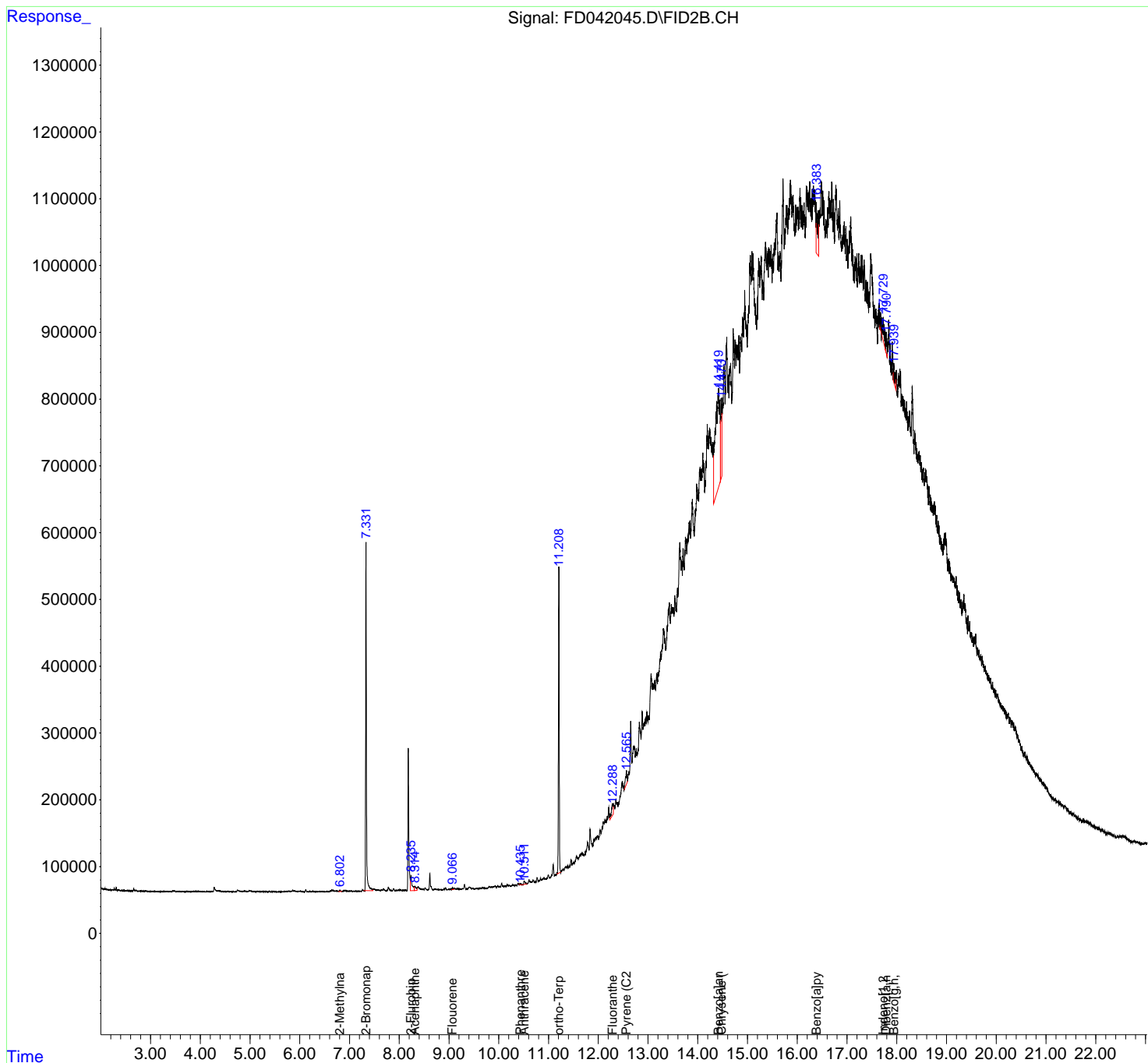
(m)=manual int.

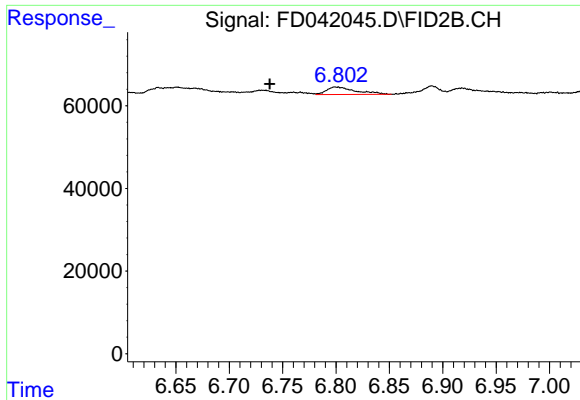
Data Path : Z:\pestpcbsrv\HPCHEM1\FID_D\Data\FD042222AR\
 Data File : FD042045.D
 Signal(s) : FID2B.CH
 Acq On : 22 Apr 2022 17:58
 Operator : UA/NP
 Sample : N2349-17
 Misc :
 ALS Vial : 65 Sample Multiplier: 1

Instrument :
 FID_D
 ClientSampleId :

Integration File: autoint1.e
 Quant Time: Apr 23 00:01:33 2022
 Quant Method : Z:\pestpcbsrv\HPCHEM1\FID_D\methods\Aromatic EPH 042122.M
 Quant Title : GC Extractables
 QLast Update : Thu Apr 21 17:32:22 2022
 Response via : Initial Calibration
 Integrator: ChemStation 6890 Scale Mode: Large solvent peaks clipped

Volume Inj. : 1 µl
 Signal Phase : Rxi-1ms
 Signal Info : 20M x 0.18mm x 0.18µm

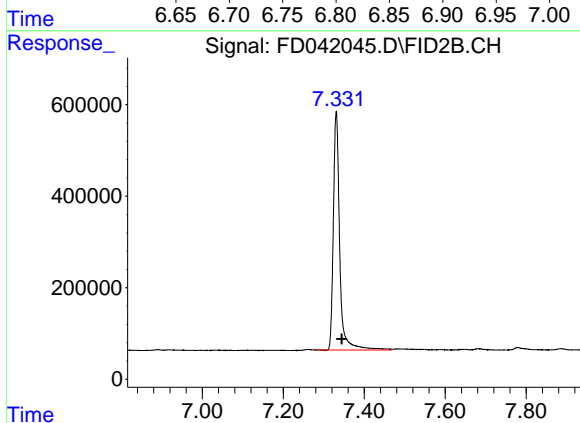




#3 2-Methylnaphthalene (C12.89)

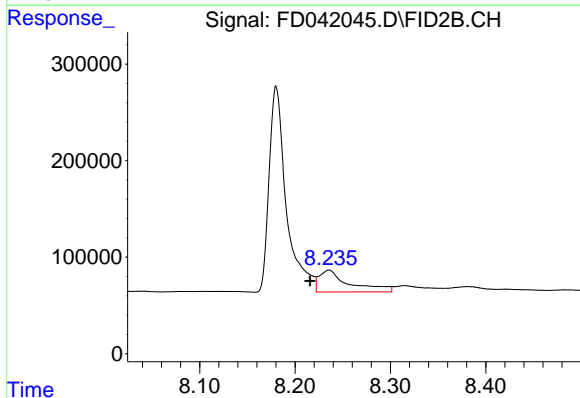
R.T.: 6.801 min
 Delta R.T.: 0.063 min
 Response: 34547
 Conc: 0.24 ug/ml

Instrument :
 FID_D
 ClientSampleId :



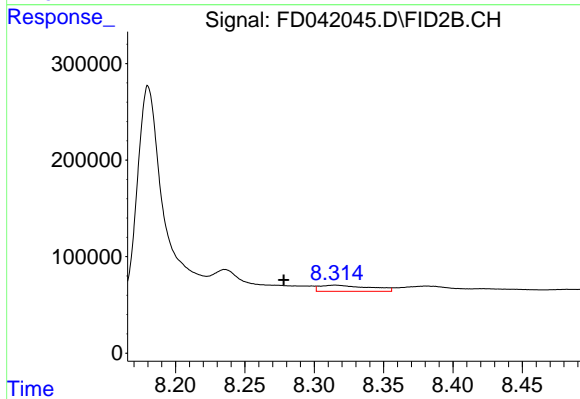
#4 2-Bromonaphthalene (SURRE)

R.T.: 7.331 min
 Delta R.T.: -0.014 min
 Response: 5669780
 Conc: 40.45 ug/ml



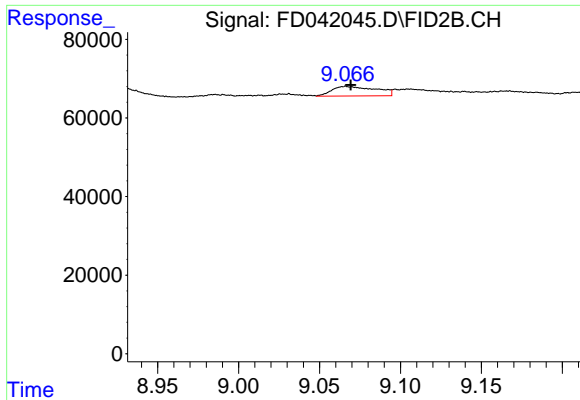
#6 2-Fluorobiphenyl (SURRE)

R.T.: 8.235 min
 Delta R.T.: 0.020 min
 Response: 500328
 Conc: 7.02 ug/ml



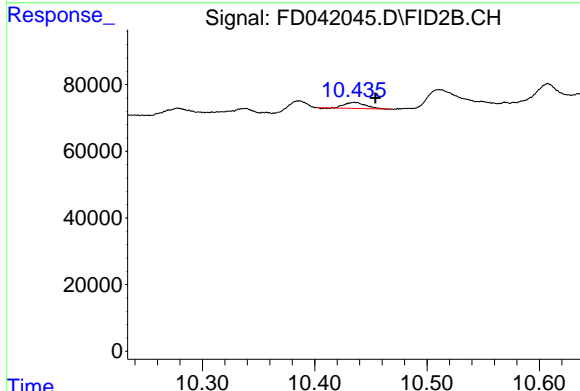
#7 Acenaphthene (C15.5)

R.T.: 8.315 min
 Delta R.T.: 0.037 min
 Response: 158853
 Conc: 0.85 ug/ml

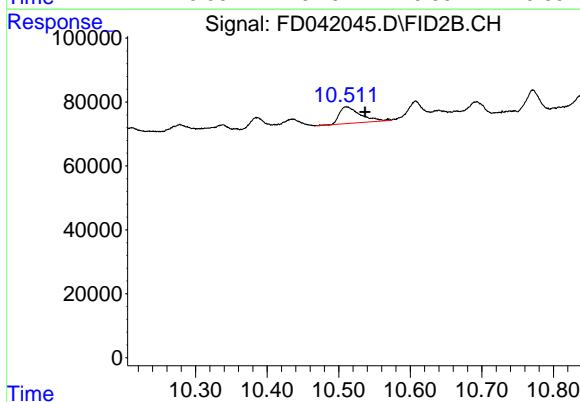


#8 Fluorene (C16.55)
R.T.: 9.067 min
Delta R.T.: -0.002 min
Response: 46303
Conc: 0.30 ug/ml

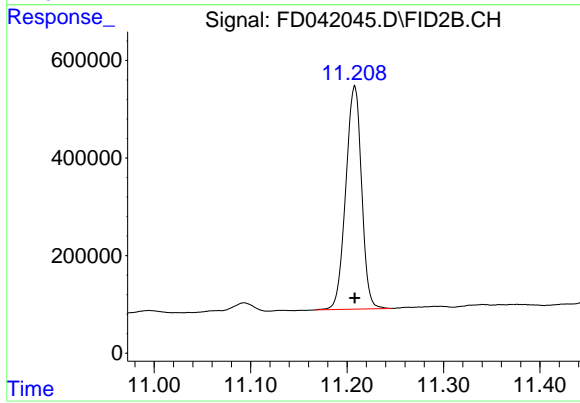
Instrument :
FID_D
ClientSampleId :



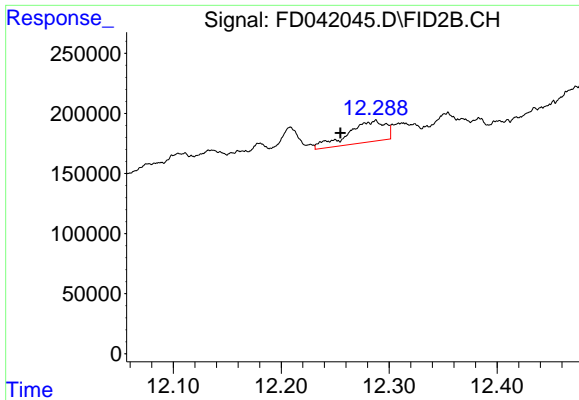
#9 Phenanthrene (C19.36)
R.T.: 10.435 min
Delta R.T.: -0.019 min
Response: 23275
Conc: 0.16 ug/ml



#10 Anthracene (C19.43)
R.T.: 10.511 min
Delta R.T.: -0.025 min
Response: 105770
Conc: 0.63 ug/ml



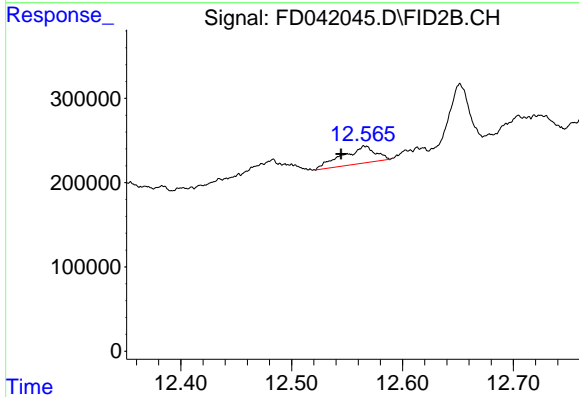
#11 ortho-Terphenyl (SURR)
R.T.: 11.208 min
Delta R.T.: 0.000 min
Response: 5189624
Conc: 29.94 ug/ml



#12 Fluoranthene (C21.85)

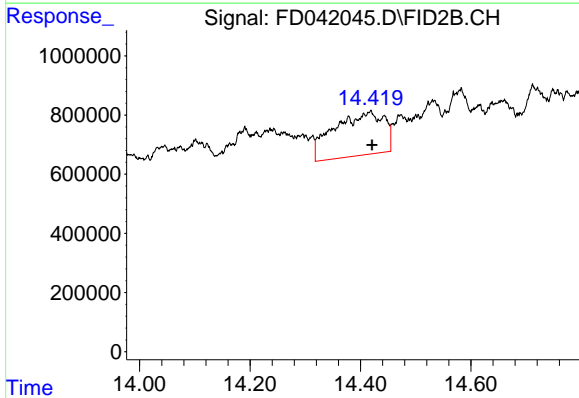
R.T.: 12.287 min
 Delta R.T.: 0.032 min
 Response: 424644
 Conc: 2.71 ug/ml

Instrument : FID_D
 ClientSampleId :



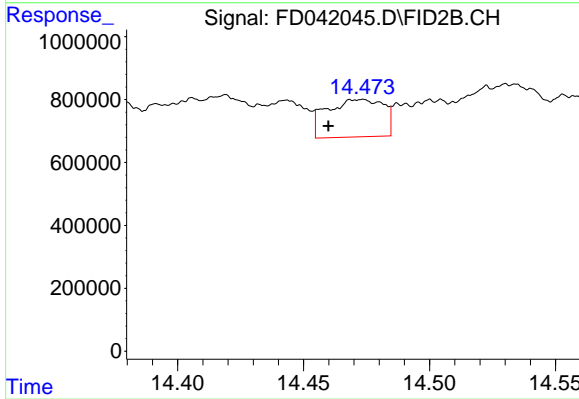
#13 Pyrene (C20.8)

R.T.: 12.566 min
 Delta R.T.: 0.021 min
 Response: 423495
 Conc: 2.60 ug/ml



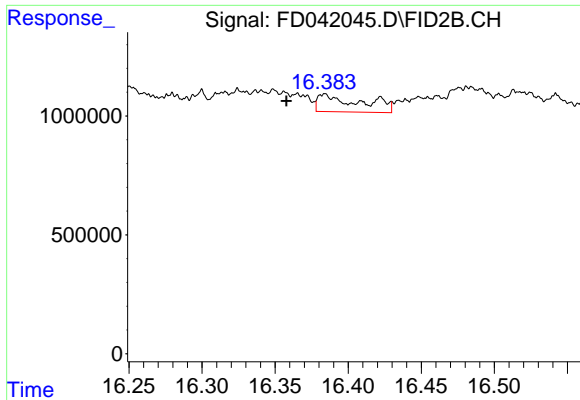
#14 Benzo[a]anthracene (C26.37)

R.T.: 14.418 min
 Delta R.T.: -0.004 min
 Response: 9210198
 Conc: 77.00 ug/ml



#15 Chrysene (C27.41)

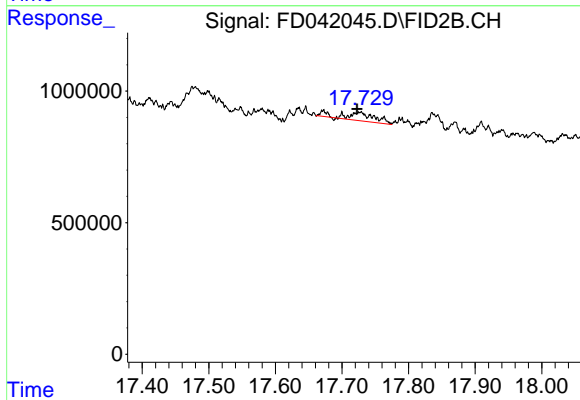
R.T.: 14.472 min
 Delta R.T.: 0.013 min
 Response: 1860799
 Conc: 10.14 ug/ml



#18 Benzo[a]pyrene (C31.34)

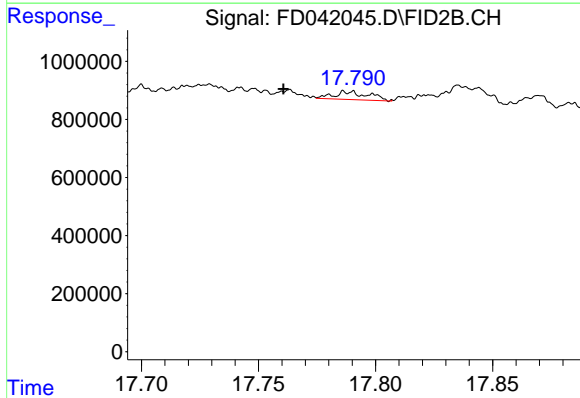
R.T.: 16.384 min
 Delta R.T.: 0.026 min
 Response: 1475999
 Conc: 10.00 ug/ml

Instrument : FID_D
 ClientSampleId :



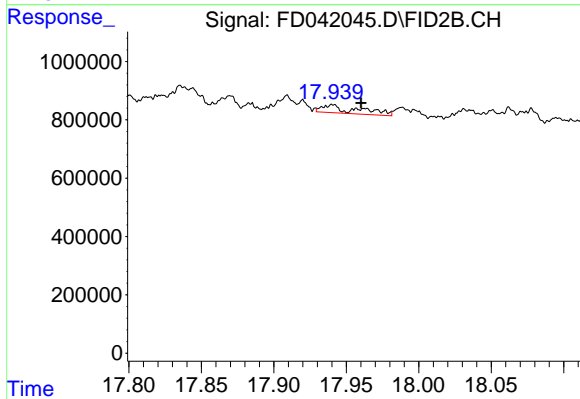
#19 Indeno[1,2,3-cd]pyrene (C35.01)

R.T.: 17.727 min
 Delta R.T.: 0.005 min
 Response: 985238
 Conc: 9.87 ug/ml



#20 Dibenz[a,h]anthracene (C30.36)

R.T.: 17.789 min
 Delta R.T.: 0.028 min
 Response: 287398
 Conc: 1.83 ug/ml



#21 Benzo[g,h,i]perylene (C34.01)

R.T.: 17.940 min
 Delta R.T.: -0.021 min
 Response: 478231
 Conc: 3.45 ug/ml