

Data Path : Z:\pestpcbsrv\HPCHEM1\FID_D\Data\FD042419AR\
 Data File : FD029022.D
 Signal(s) : FID2B.CH
 Acq On : 24 Apr 2019 9:18
 Operator : AJ\SJ
 Sample : K2532-01
 Misc :
 ALS Vial : 54 Sample Multiplier: 1

Instrument :
 FID_D
 ClientSampleId :

Integration File: autoint1.e
 Quant Time: Apr 25 03:18:16 2019
 Quant Method : Z:\pestpcbsrv\HPCHEM1\FID_D\methods\Aromatic EPH 041919.M
 Quant Title : GC Extractables
 QLast Update : Fri Apr 19 05:29:12 2019
 Response via : Initial Calibration
 Integrator: ChemStation 6890 Scale Mode: Large solvent peaks clipped

Volume Inj. : 1 µl
 Signal Phase : Rxi-1ms
 Signal Info : 20M x 0.18mm x 0.18µm

Compound	R.T.	Response	Conc Units
System Monitoring Compounds			
4) S 2-Bromonaphthalene (S...	7.090	4093124	41.036 ug/ml
Spiked Amount	50.000	Recovery =	82.07%
6) S 2-Fluorobiphenyl (SURR)	7.956	2656316	38.762 ug/ml
Spiked Amount	50.000 Range 0 - 131	Recovery =	77.52%
11) S ortho-Terphenyl (SURR)	10.993	2390169	22.433 ug/ml
Spiked Amount	50.000	Recovery =	44.87%

Target Compounds

(f)=RT Delta > 1/2 Window

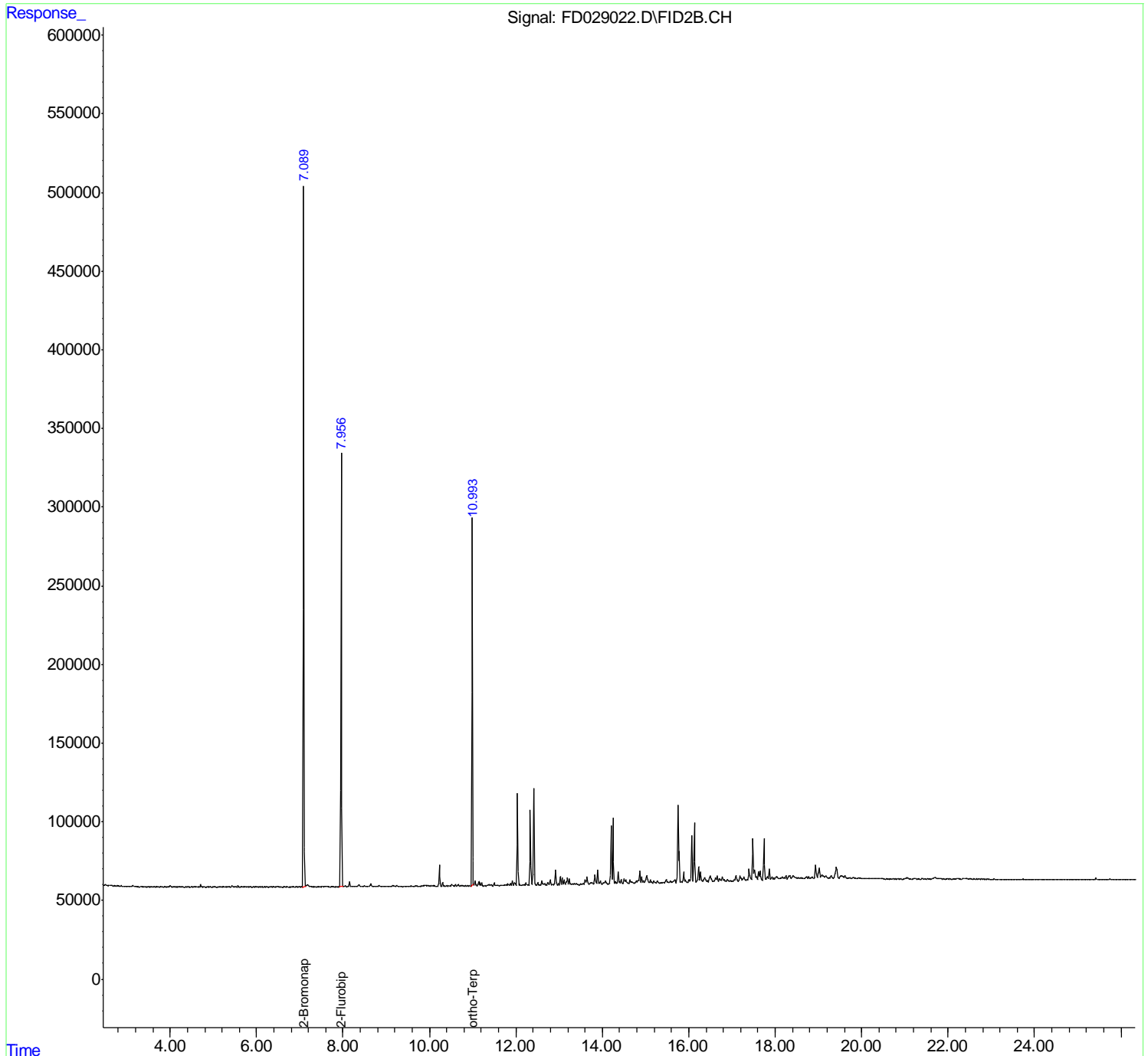
(m)=manual int.

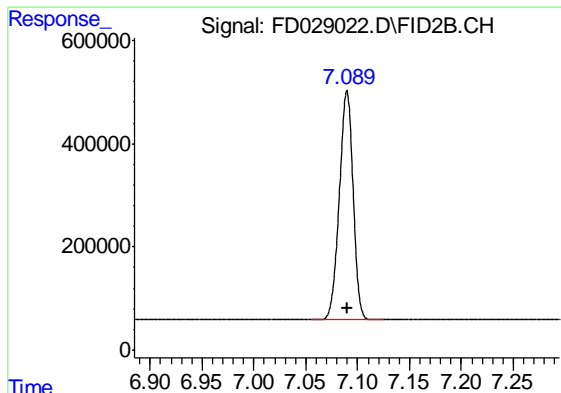
Data Path : Z:\pestpcbsrv\HPCHEM1\FID_D\Data\FD042419AR\
 Data File : FD029022.D
 Signal(s) : FID2B.CH
 Acq On : 24 Apr 2019 9:18
 Operator : AJ\SJ
 Sample : K2532-01
 Misc :
 ALS Vial : 54 Sample Multiplier: 1

Instrument :
 FID_D
 ClientSampleId :

Integration File: autoint1.e
 Quant Time: Apr 25 03:18:16 2019
 Quant Method : Z:\pestpcbsrv\HPCHEM1\FID_D\methods\Aromatic EPH 041919.M
 Quant Title : GC Extractables
 QLast Update : Fri Apr 19 05:29:12 2019
 Response via : Initial Calibration
 Integrator: ChemStation 6890 Scale Mode: Large solvent peaks clipped

Volume Inj. : 1 µl
 Signal Phase : Rxi-1ms
 Signal Info : 20M x 0.18mm x 0.18µm

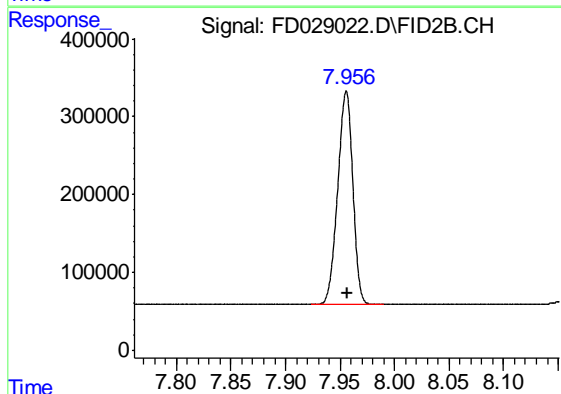




#4 2-Bromonaphthalene (SURR)

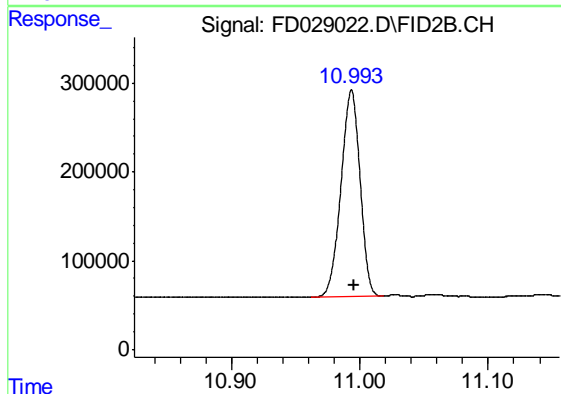
R.T.: 7.090 min
Delta R.T.: 0.000 min
Response: 4093124
Conc: 41.04 ug/ml

Instrument :
FID_D
ClientSampleId :



#6 2-Fluorobiphenyl (SURR)

R.T.: 7.956 min
Delta R.T.: -0.001 min
Response: 2656316
Conc: 38.76 ug/ml



#11 ortho-Terphenyl (SURR)

R.T.: 10.993 min
Delta R.T.: -0.001 min
Response: 2390169
Conc: 22.43 ug/ml